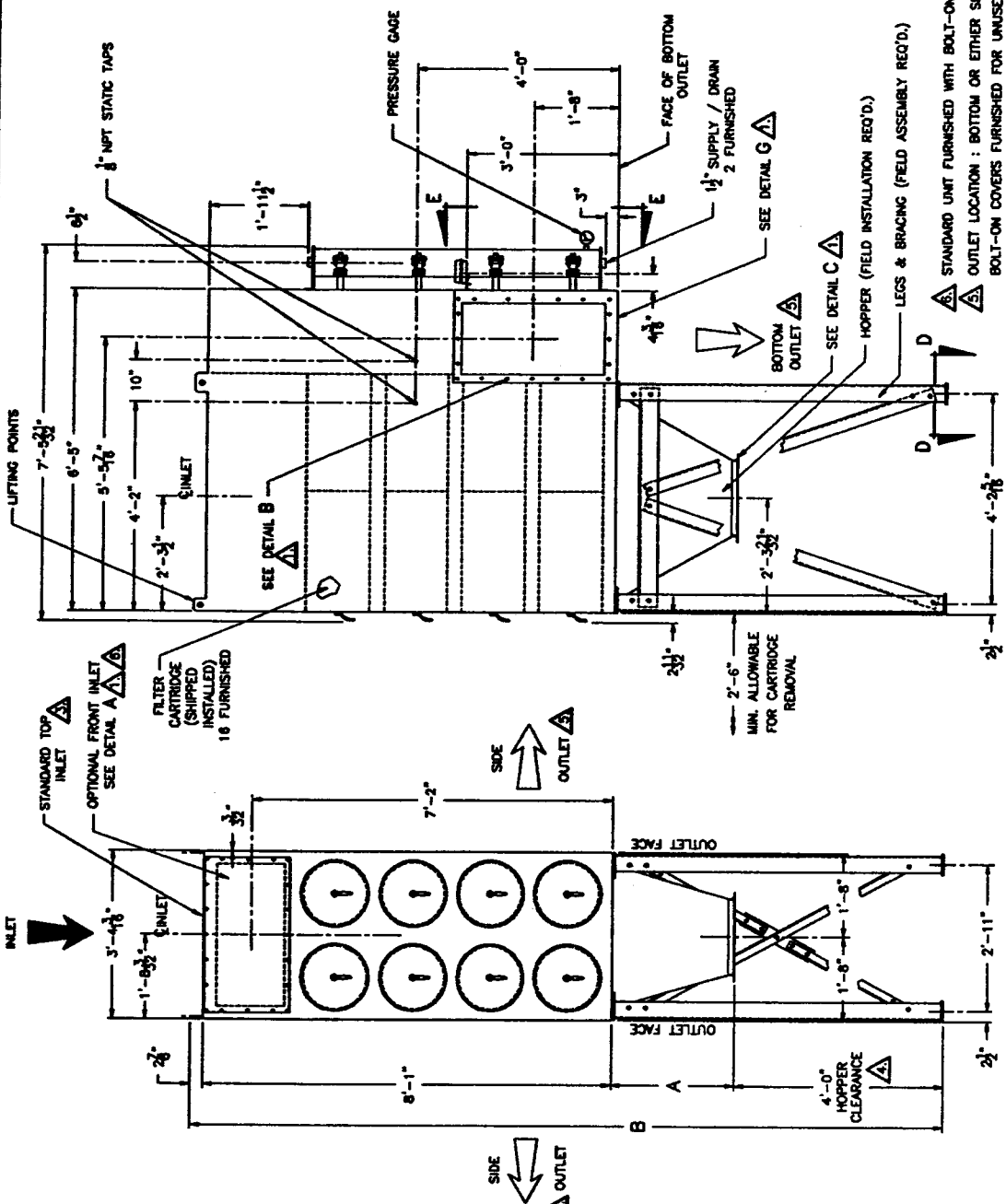


REVISIONS

(B) REDWAIN & REISER, INC. 14 JAN 93
 (C) DIM. 3 3/4" TO 2 1/8" COL. 1" REDUCED 1/2" SHIP/AM
 DIM. 3 3/4" TO 4 3/16" MORE 5 REVER. ELM 14 SEPT 93

(D) (30322) TOP INLET, FRONT INLET & WHOLE REVERSED
 DIM 28 NOV 91 SEC 01 JK



- NOTES:
- ▲ STANDARD UNIT FURNISHED WITH BOLT-ON COVER.
 - ▲ OUTLET LOCATION: BOTTOM OR EITHER SIDE.
 - ▲ BOLT-ON COVERS FURNISHED FOR UNUSED OUTLETS.
 - ▲ 4'-0" STANDARD HOPPER CLEARANCE (4'-6" THRU 7'-0" CLEARANCE IN 6" INCREMENTS OPTIONAL).
 - ▲ FOR DETAILS SEE U135P-1643642. OPTIONAL FRONT INLET REQ'D. WITH EXPLOSION VENT OPTION.
 - 2. CONTROL PANEL, DRAFT & PRESSURE GAGES SHIP SEPARATELY.
 - ▲ FOR DETAILS AND SECTIONAL VIEWS SEE U135P-1643634.

HOPPER SLOPE	A	B
	1'-0 3/4"	13'-9"
	2'-0 3/8"	14'-0 3/4"

DRAWN RB	DATE DEC 2 92	CHECKED SAM	DATE JAN 5 93	APPR. RLK	DATE 6 JAN 93	SUPERSEDES U135P-1643592-C
-------------	------------------	----------------	------------------	--------------	------------------	-------------------------------

	PO Box 35690 Louisville, Ky 40232-5690	OPTIFLO ROUND CARTRIDGE COLLECTOR, SIZE 4RC16	DRAWING NO. U135P-1643592-D
--	--	--	--------------------------------