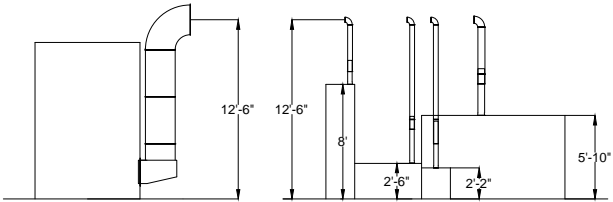


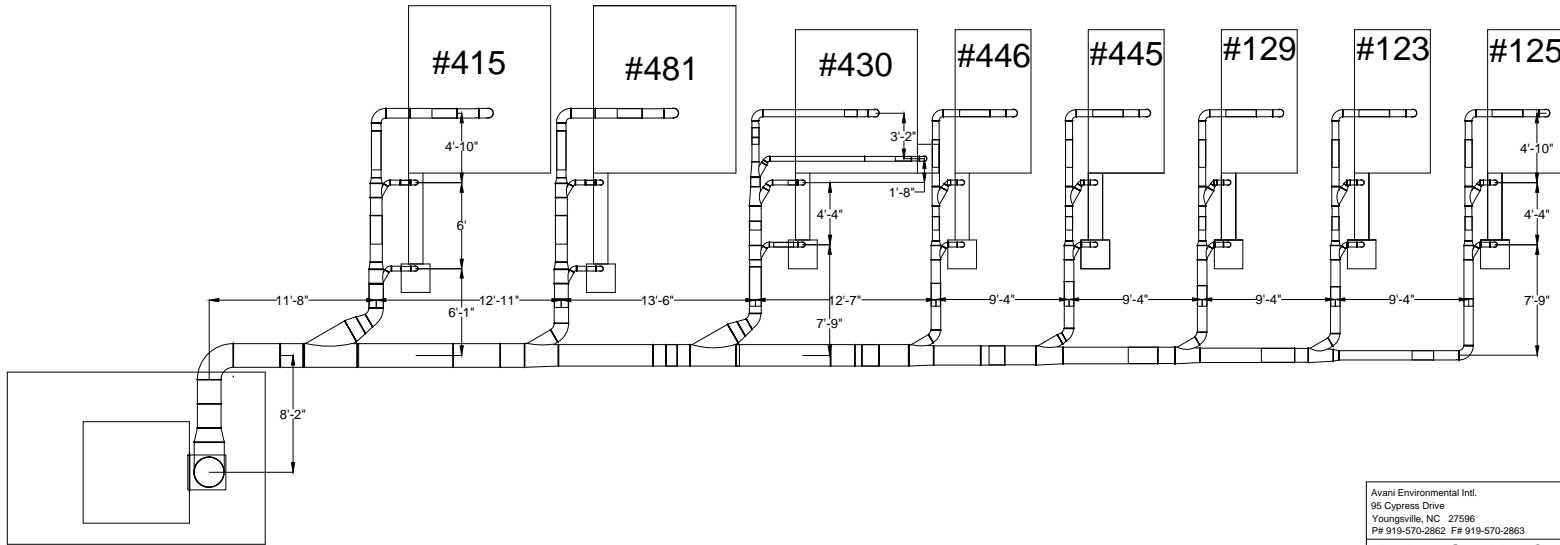
Semblex Corp Cold Headers

Elevation View



- Notes:
1. Duct Jacobs Tubing
 2. Absolent unit - ODR12000
 3. Will hang from ceiling via gripples

Plan View



Avani Environmental Intl. 95 Cypress Drive Youngsville, NC 27596 P# 919-570-2862 F# 919-570-2863		<h2>Avani</h2>
Project: Semblex Corp - Screw Machines Drawing: Duct Layout Plan View		
Date: 12/19/12	Drawn by: MDT	
Sheet No: 1 of 1	Rev.: 0	