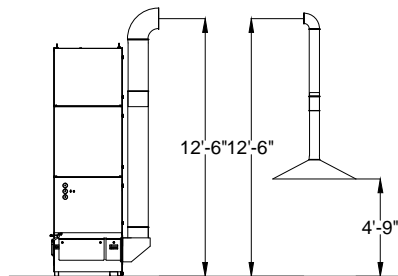


# Semblex Corp Roller Machines

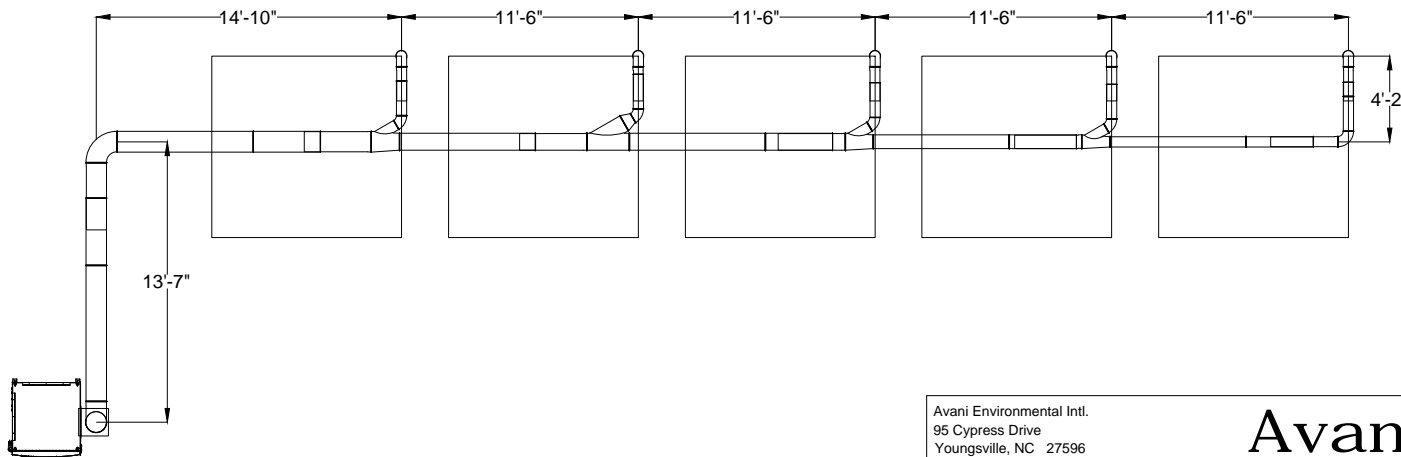
Elevation View



Notes:

1. Duct Jacobs Tubing
2. Absolent unit - ODR3000
3. Will hang from ceiling via gripples

Plan View



Avani Environmental Intl.  
95 Cypress Drive  
Youngsville, NC 27596  
P# 919-570-2862 F# 919-570-2863

**Avani**

Project: Semblex Corp - Roller Machines

Drawing: Duct Layout Plan View

Date: 12/19/12

Drawn by: MDT

Sheet No: 1 Of 1

Rev.: 0