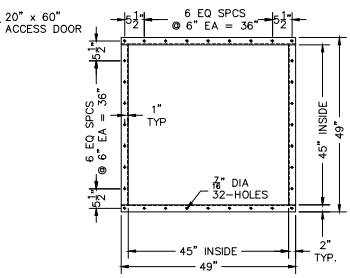
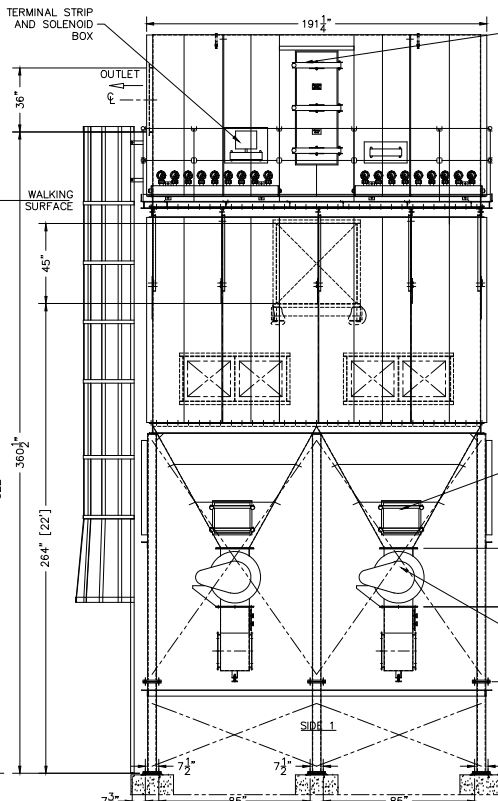
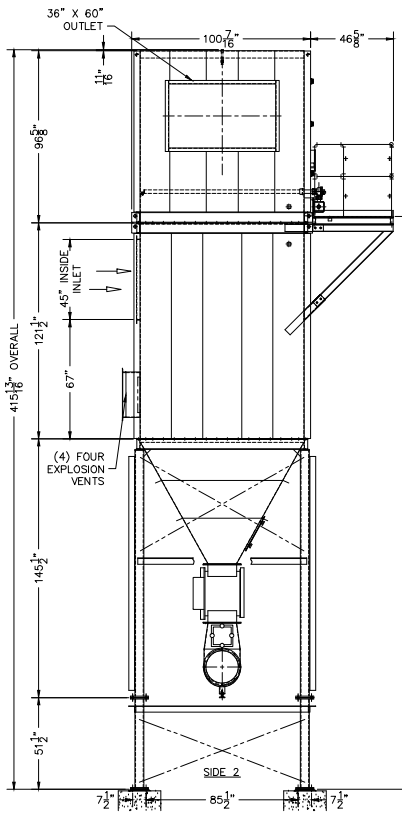


OUTLET DETAIL
MADE FROM 2" x 2" x 3/16" ANGLE RING
SF=2

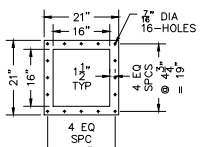
BILL OF MATERIAL				
ITEM	DESCRIPTION	PART NO.	QTY	MATL
1	UPPER BIN ASSEMBLY		1	1
1	LOWER BIN ASSEMBLY		1	1
1	HOPPER ASSEMBLY		2	2
1	PLATFORM ASSEMBLY		4	4
1	HARDWARE BAG		5	5
25	(GAL) PAINT (GRAY)	503847		6
4	LOAD STICKER			7
1	STICKER "WATCH YOUR STEP"			8
*	CAZED LADDER (288')			9
*	(2) ROTARY AIR LOCK 16" x 16"	532313		10
*	(3) SPRINKLER HEADS	503467		11
*	(3) EXPLOSION VENT	500886		13

* SEPARATE LINE ITEM ON ORDER

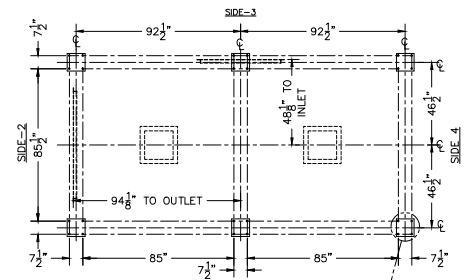
- SCIENTIFIC SPJ-216-X410 DUST COLLECTOR SPECIFICATIONS:
- 1. NUMBER OF BAGS 216
 - 2. BAG LENGTH 10 FT.
 - 3. FILTER SURFACE AREA 2545 SQ. FT.
 - 4. COMPRESSED AIR REQUIREMENTS SCFM @ 90-100 PSIG CLEAN DRY AIR 20
 - 5. NUMBER OF VALVES 18 (1 1/2")
 - 6. INLET OPENING 45" x 45"
 - 7. OUTLET OPENING 36" x 60"
 - 8. TWO HOPPER DISCHARGE OPENINGS 16" x 16"
 - 9. HINGED ACCESS DOOR IN CLEAN AIR PLENUM 20" x 60"
 - 10. ACCESS DOOR IN EACH HOPPER 20" x 20"
 - 11. NEMA 4 CONTROL PACKAGE 120 V, 1 PH, 60 HZ.
 - 12. HOUSING MATERIAL 12 GA. HRS
 - 13. APPROXIMATE SHIPPING WEIGHT 14,500 LBS.



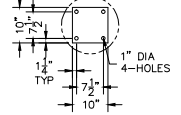
INLET DETAIL
MADE FROM 2" x 2" x 1/4" ANGLE
SF=2



HOPPER AND RAL DISCHARGE DETAIL
SF = 2



MANIFOLD SIDE 1 FOUNDATION PLAN



FOOT PAD DETAIL
MADE FROM 3/4" FLAT
SF=2

PLEASE SIGN APPROVED FOR MANUFACTURE: _____ DATE: _____

CERTIFIED PRINT
USE ONLY FOR

YOUR ORDER OUR ORDER 64891
CUST. R.T. LONDON DATE O.K.

THE MATERIAL IS PROPERTY OF SCIENTIFIC DUST COLLECTORS. NO RIGHTS ARE GRANTED TO USE SUCH MATERIAL FOR ANY PURPOSE OTHER THAN (1) PRODUCT EVALUATION OR MAINTENANCE OR (2) THE FURNISHING OF SERVICE AND SUPPLIES TO SCIENTIFIC DUST COLLECTORS.

ITEM: SPJ-216-X410 FABRIC DUST COLLECTOR FOR R.T. LONDON

TOLERANCE UNLESS OTHERWISE NOTED: 20 + FRACTION 1/16

DRAWN BY: G.M. CHECKED BY: A.W.

DATE: 10/25/12 SCALE: 1/32"=1" DRAWING NO: 64891

REV. NO: 47137