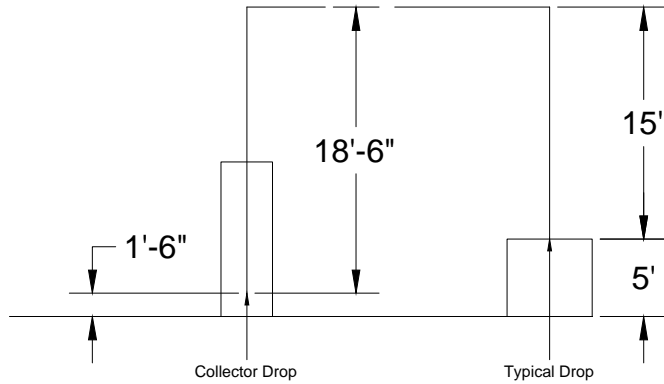
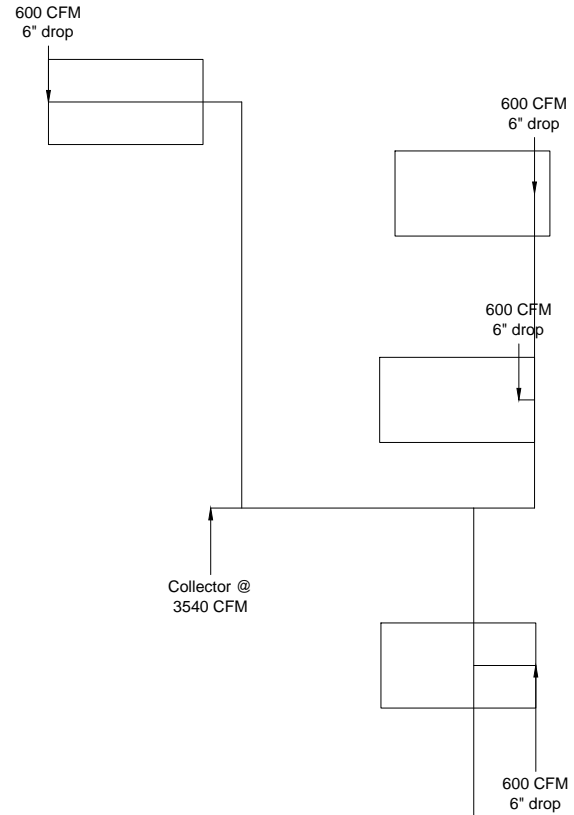


75'



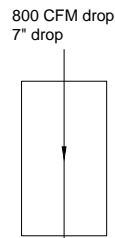
Elevation View



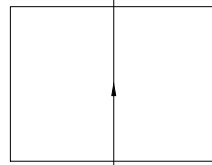
Power Gen Components

Notes:

- 1. 3000 FPM transport velocity
- 2. Oil Mist Application
- 3. supply butterfly valves



Collector @ 3540 CFM



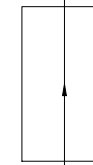
800 CFM drop 7" drop



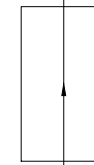
650 CFM 6" drop



650 CFM 6" drop



650 CFM 6" drop



650 CFM 6" drop

100'