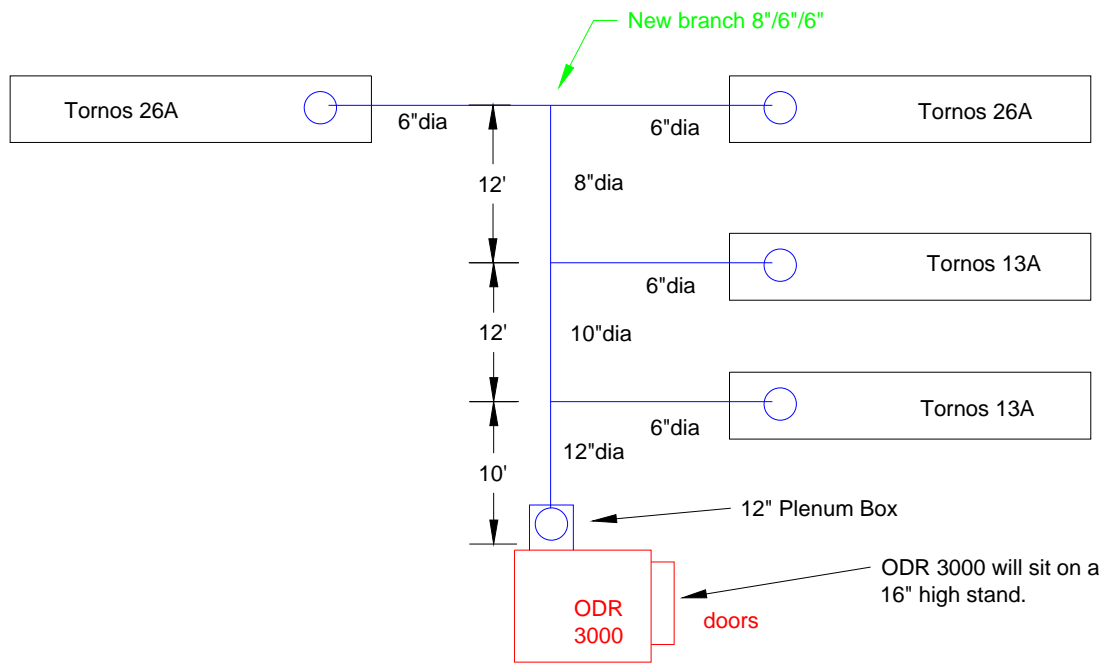
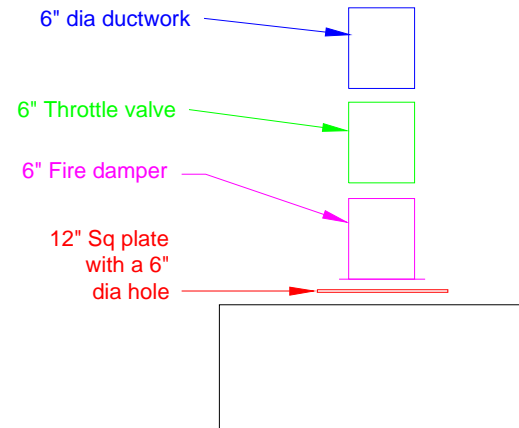


Absolent Ductwork Layout added Y-Branch

Plan View



Side View of drop detail



Notes:

- A) Bottom of duct about 12' off of floor.
- B) Ceiling height is 17'
- C) Hang duct from ceiling
- D) ODR 3000 motor is 460 volts 3 phase. Full load amps at 460volts are 15.

Avani Environmental
 95 Cypress Drive
 Youngsville, NC 27596
 P# 919-570-2862 F# 919-570-2863

Avani

Project: Petron Automation

Drawing: Revised Layout

Date: 1/15/13

Drawn by: MDT

Sheet No: