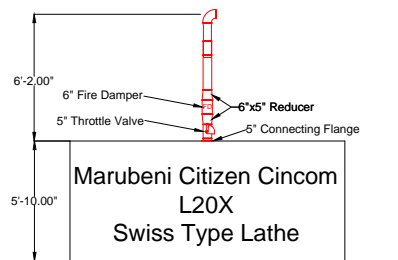
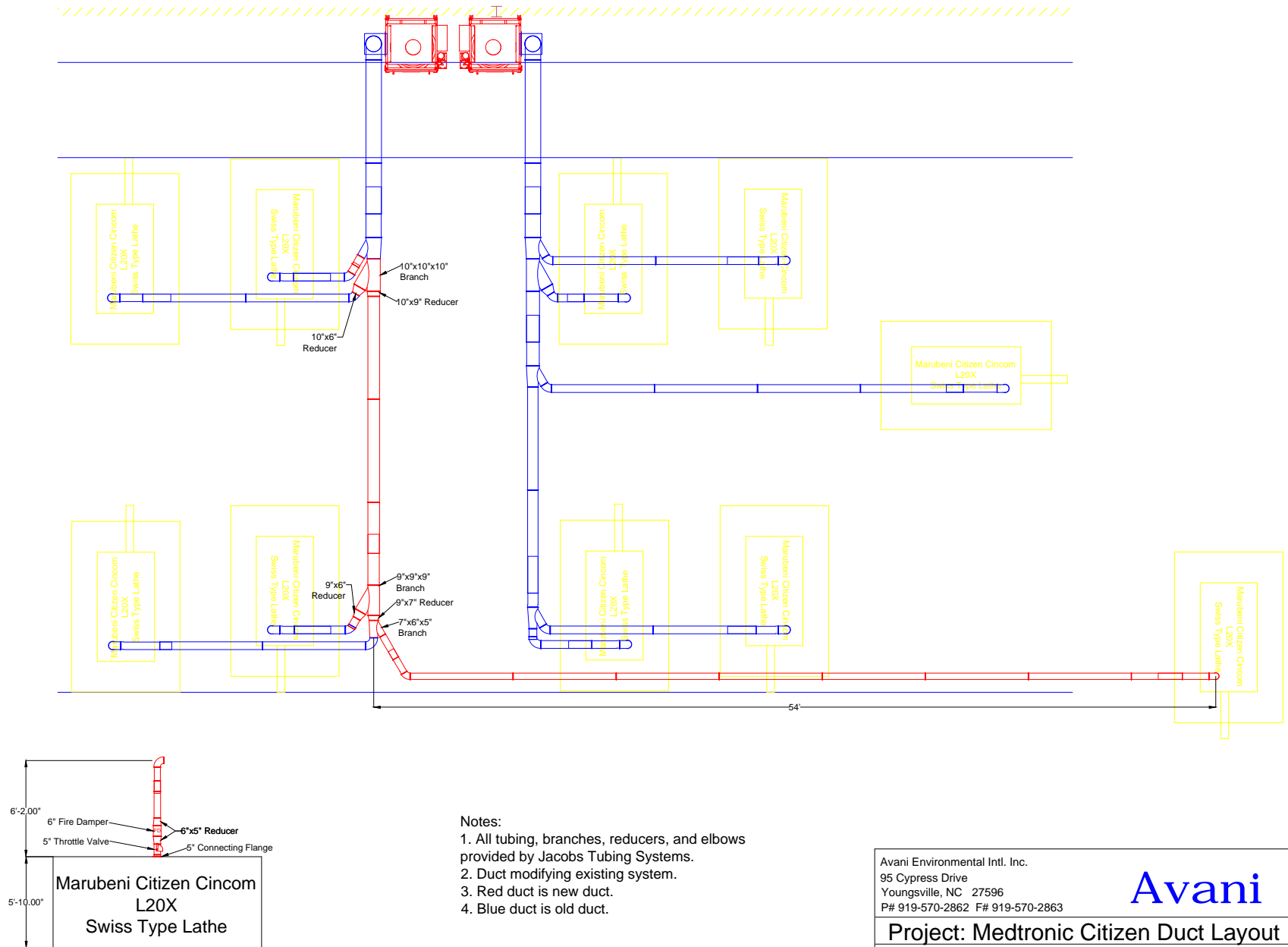


Medtronic - Citizen Line



Notes:

1. All tubing, branches, reducers, and elbows provided by Jacobs Tubing Systems.
2. Duct modifying existing system.
3. Red duct is new duct.
4. Blue duct is old duct.

Avani Environmental Intl. Inc.
 95 Cypress Drive
 Youngsville, NC 27596
 P# 919-570-2862 F# 919-570-2863

Avani

Project: Medtronic Citizen Duct Layout

Drawing: Duct Layout

Date: 4/29/14

Drawn by: MDT

Sheet No: 1 OF 1