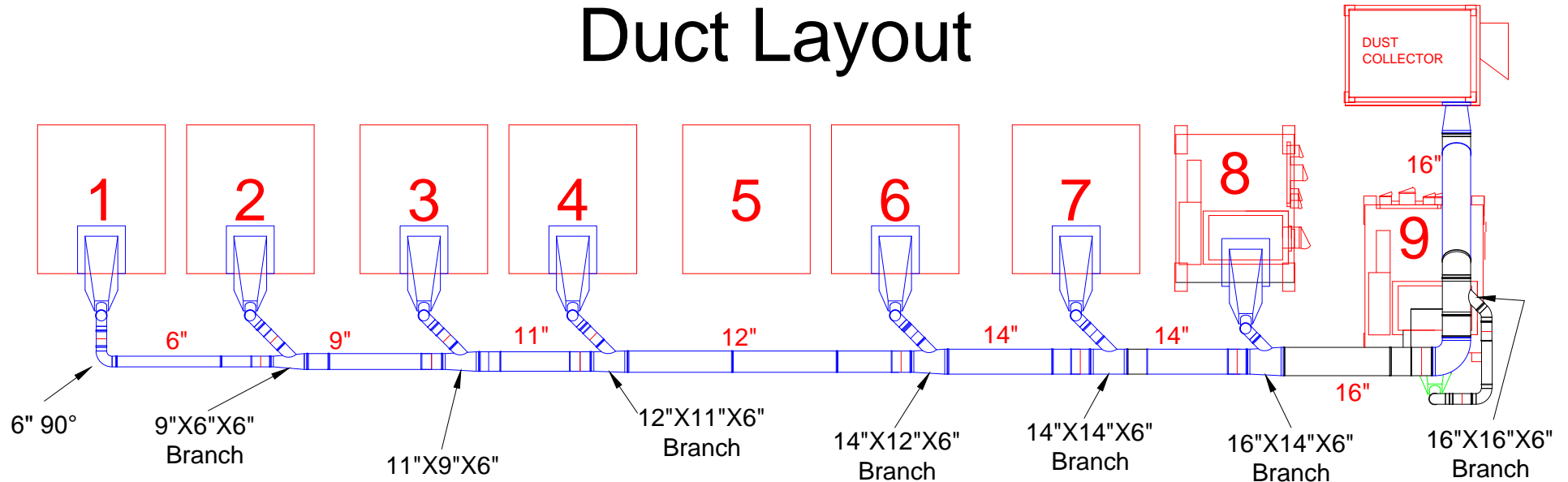
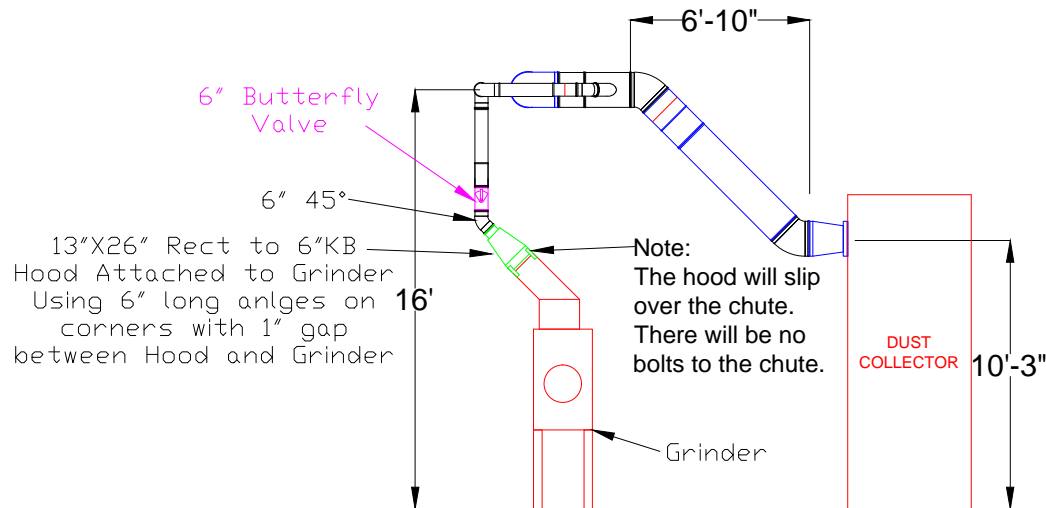


Hi-Cone Revised Floor Layout Duct Layout



Plan View



Elevation View

Notes:

1. Grinders and Dust Collector in red
2. Previously installed duct in blue.
3. New duct in black
4. Hi-Cone to install

Avani Environmental Int.
95 Cypress Drive
Youngsville, NC 27596
P# 919-570-2862 F# 919-570-2863

Avani

Project: HI-CONE	
Drawing: Revised Layout	
Date: 4/4/13	Drawn by: MDT
Sheet No: 1 of 1	Rev.: 0