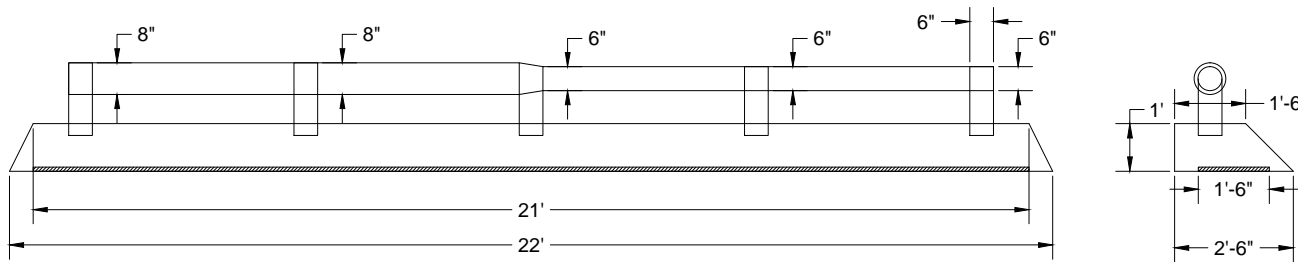


Proposed Design

Notes:

1. SPC-3000 = 2350 CFM
2. Approximately 55 ft<sup>2</sup> of open space to allow 42.5 FPM
3. Piping not sized for balanced draw



Revised Design

Notes:

1. SPC-3000 = 2350 CFM
2. Cover center, allow a 6" opening around edges of hood. Approximately 23.5 ft<sup>2</sup> of open space to allow 100 FPM
3. Piping sized for balanced draw