



REPRESENTED BY:

TODD AIR SOLUTIONS  
101 E FISHER ST, 3rd FLOOR  
SALISBURY NC 28144  
Phone: 704 630-1101  
Fax: 704 630-0528

DRAWING SUBMITTAL

CUSTOMER:

AVANI ENVIRONMENTAL  
PO BOX 1279  
YOUNGSVILLE, NC 27596

DATE: 6/27/2011

ATTENTION: Mr. Ken Haga

P.O. # 3292

CFV # 1107834

REPRESENTATIVE ORDER # CFQ# 189942

  x   REFERENCE             APPROVAL             CORRECTION

DRAWING NO.	DESCRIPTION
- - - -	SPECIFICATION SHEET
1107834	MODEL: HDBI-300
A27214-01	DISCHARGE FLANGE
A27205	INLET FLANGE

REMARKS: \_\_\_\_\_  
\_\_\_\_\_

**SPECIFICATION SHEET**

CFV NO. <b>1107834</b>	CUSTOMER ID NUMBER <b>3566220</b>	PAGE <b>1</b>	
S O L D	AVANI ENVIRONMENTAL PO BOX 1279 YOUNGSVILLE, NC 27596	S H I P	VOLUNTEER WELDING 815 FIFTH AVE SOUTH NASHVILLE, TN 37203
T O		T O	
CUSTOMER P.O. NUMBER <b>3292</b>		BUYER <b>MR. KEN HAGA</b>	SCHEDULED SHIP DATE <b>7/15/11</b>

MARKS

**PO# 024747 / Mackawa**

SHIP VIA <b>USF Holland/Estes/Averitt</b>			REPRESENTATIVE <b>TODD AIR SOLUTIONS</b>				REP. ORDER NO. <b>CFQ# 189942</b>		SHIPPING CHARGES <b>Prepaid &amp; Add</b>	
QTY. <b>1</b>	DESCRIPTION <b>HEAVY DUTY BI BLOWER</b>			MODEL <b>HDBI-300</b>	ROT <b>CW</b>	DISCH <b>UB</b>	ARR <b>4</b>	WHEEL/PROP <b>SQBI 80%</b>	INLET	
MOTOR DATA	HP <b>40</b>	RPM <b>1750</b>	PH <b>3</b>	CYCLE <b>60</b>	VOLTAGE <b>SEE BELOW</b>	FRAME <b>324T</b>	ENCLOSURE <b>TEFC</b>	SUPPLIED BY <b>CFV</b>	INSTALLED BY <b>CFV</b>	
	CFV MOTOR PART NUMBER <b>377285S</b>							GROOVES	FXD/ADJ	BELT
FAN DATA	DENSITY <b>.075</b>	TEMP. <b>70°F.</b>	ALTITUDE	CFM <b>13000</b>	SP <b>12.000</b>	RPM <b>1750</b>	BHP <b>36.100</b>	MOTOR SHEAVE		BUSHING
AT OPERATING CONDITIONS										
MOTOR VENDOR MODEL NUMBER <b>1LE22213AB116AA3</b>								FAN SHEAVE	BUSHING	

**Record Print, 2D CAD Drawings**

**Complete Motor Description:**

**MTR, 40 HP, 1750 RPM, 3PH, 60Hz, 230/460V, TEFC, Prem Eff, FM, 324T, 1.15 SF, F Insul., 40C Amb., Sealed Bearings, F1 Box, Cast Iron Frame, GP100 TYPE, Siemens**

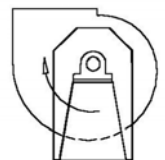
**Maximum allowable wheel speed at 70°F is 2243 RPM**

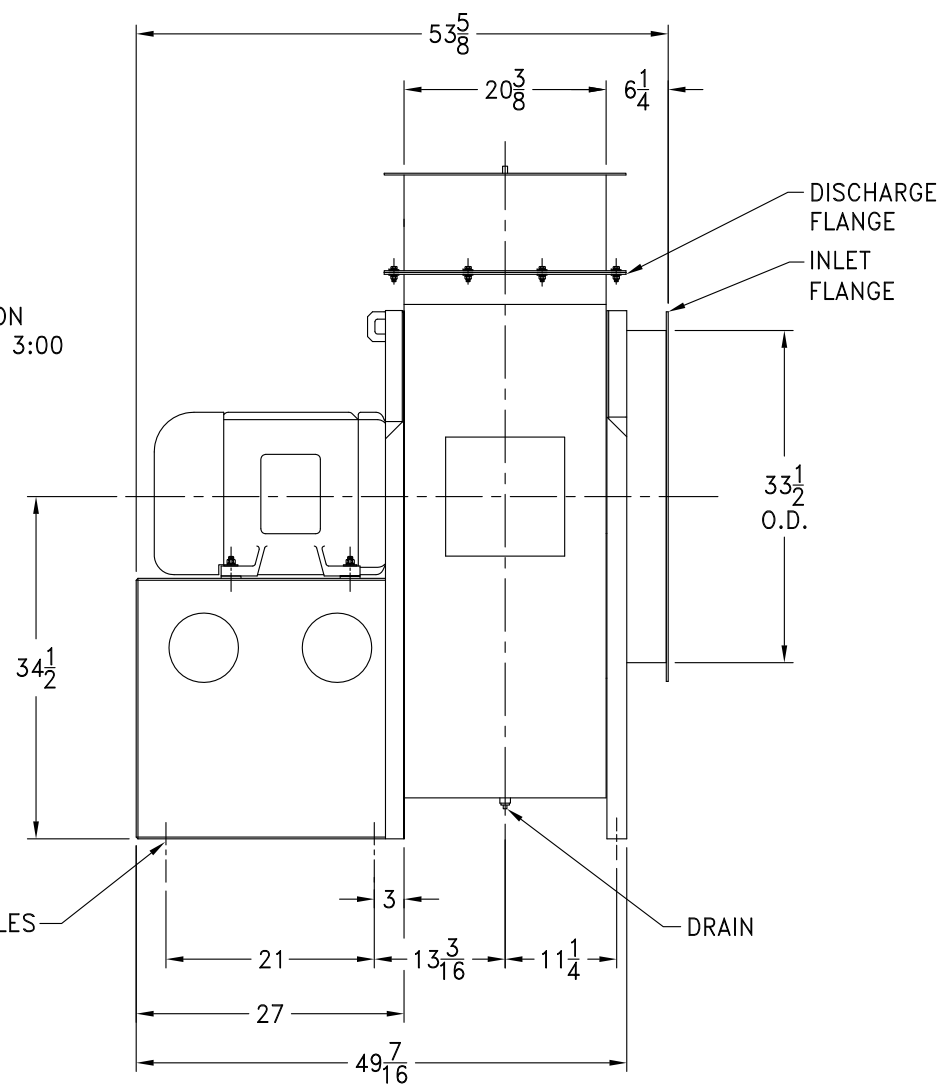
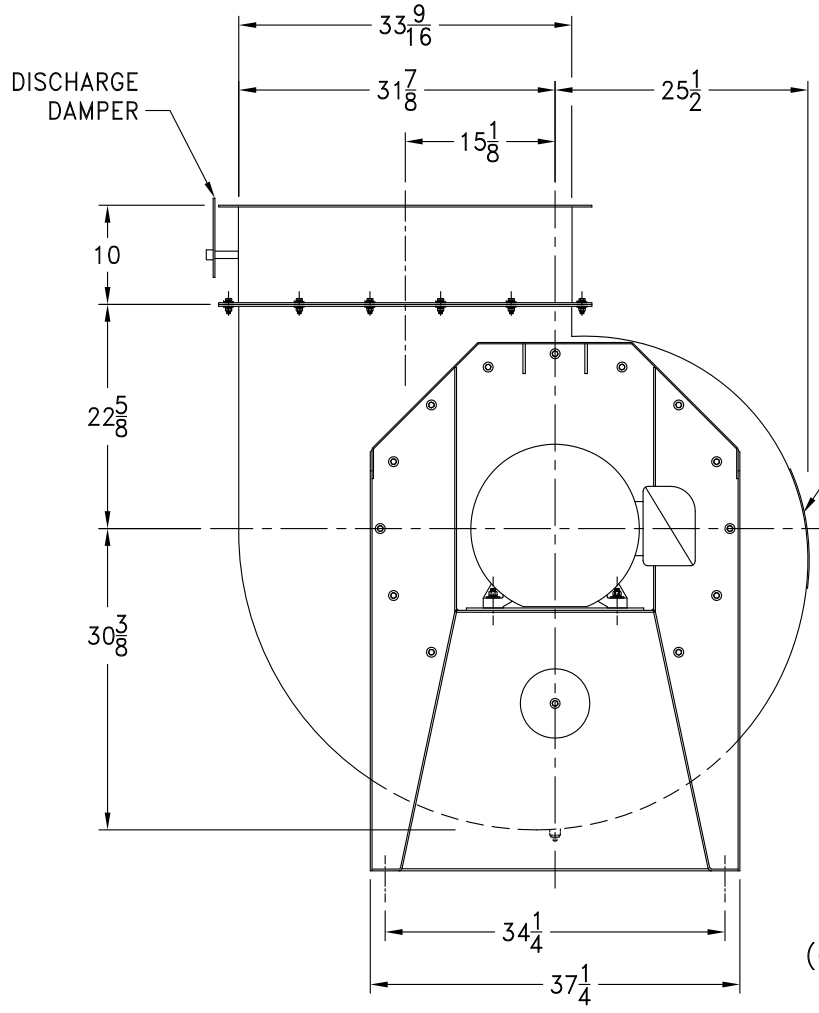
**CLASS III WHEEL CONSTRUCTION**

- MANUAL CONTROLLED OPPOSED BLADE DISCHARGE DAMPER**
- Special color enamel paint, see paint chip for color.**
- DRILL DISCHARGE FLANGE STANDARD**
- DRILL INLET FLANGE STANDARD BOLT CIRCLE ON-CENTERS**
- QUICK OPEN INSPECTION DOOR AT 3 O'CLOCK**
- DRAIN**
- TEFLON SHAFT SEAL**
- PAINTED AVANI BLUE**

**Estimated Shipping Weight: 1673 pounds**

**Submittal Email: [bvenezia@avanienvironmental.com](mailto:bvenezia@avanienvironmental.com)**

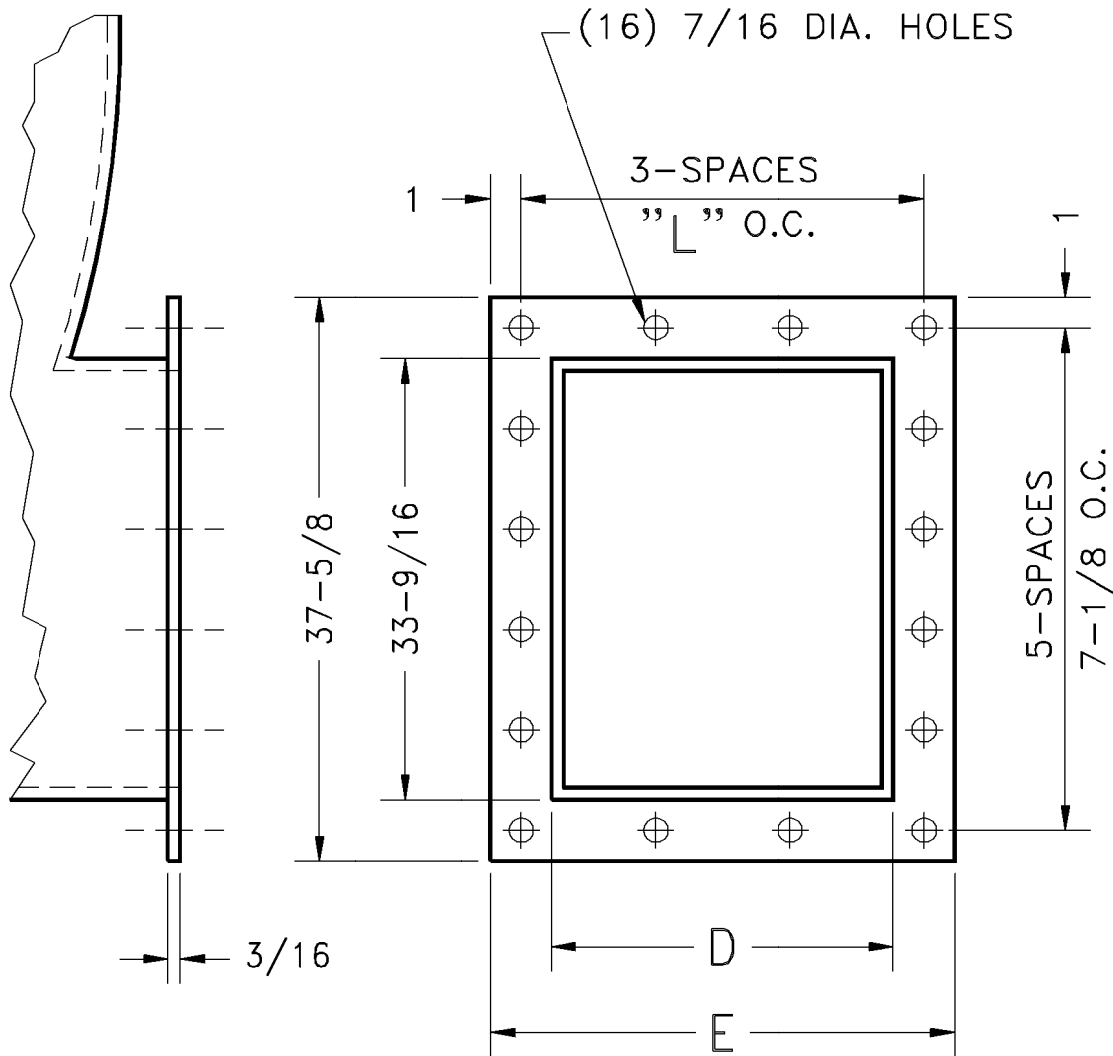




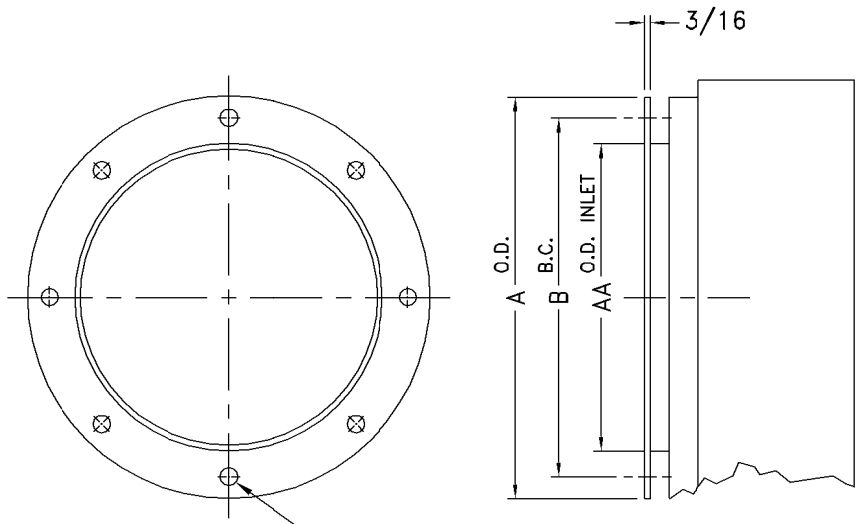
±1/16  
(6) 9/16 DIA. HOLES

- NOTES:  
 1. MOTOR: 40HP, 1750 RPM, 324T FRAME, TEFC.  
 2. SEE DWG. A27214-01 FOR DISCHARGE FLANGE.  
 3. SEE DWG. A27205 FOR INLET FLANGE.  
 4. TEFLON SHAFT SEAL.

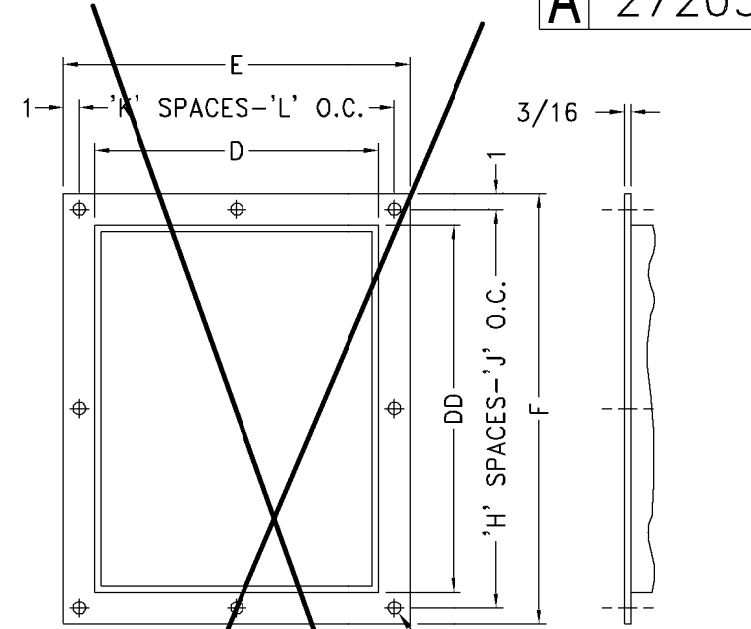
				SUPERSEDES:		TOLERANCES: FRACTIONS ± 1/8 ANGLES: ± 1° DECIMALS: X.XXX = ±0.005 X.XX = ±0.060 X.X = ±0.120		SCALE: FULL IN CAD		<b>cincinnati fan</b> 7697 SNIDER ROAD MASON, OHIO 45040	
				SIMILAR TO:		ALL DIMENSIONS IN INCHES UNLESS OTHERWISE SPECIFIED		DATE: 06/27/11			
								DR. BY: JH			
								CHK. BY:			
NO.	DESCRIPTION	DATE	INITIALS	CERTIFIED		MATERIAL:		ASSEMBLY		DRAWING NO. <b>A</b> 1107834	
REVISIONS										SHEET 1 of 1 REV.	



	% WIDTH	D	E	L
	100	22-3/4	26-3/4	8-1/4
	95	22-3/16	26-3/16	8-1/16
	90	21-9/16	25-9/16	7-27/32
	85	21	25	7-21/32
<b>X</b>	80	20-3/8	24-3/8	7-15/32
	75	19-3/4	23-3/4	7-1/4
	70	19-3/16	23-3/16	7-1/16
	65	18-5/8	22-5/8	6-7/8
	60	18	22	6-21/32
	55	17-7/16	21-7/16	6-15/32
	50	16-13/16	20-13/16	6-9/32
	45	16-1/4	20-9/32	6-3/32



INLET FLANGE  
"N" HOLES, "P" DIA.



DISCHARGE FLANGE ①  
"M" 7/16 DIA. HOLES

INLET					
SIZE	A O.D.	B B.C.	N	AA DIA.	P
120	16	14-3/8	8	13-1/4	7/16
130	17-3/4	15-15/16	8	14-5/8	7/16
150	19-1/4	17-1/2	8	16-1/8	7/16
160	21-1/8	19-3/8	8	18	7/16
180	23-1/2	21-1/2	12	20	7/16
200	25-1/2	23-1/2	12	22	7/16
220	28-1/8	26-1/8	12	24-5/8	7/16
240	30-3/4	28-3/4	16	27	7/16
270	33-3/4	31-5/8	16	30	7/16
X 300	37-1/4	35-1/4	16	33-1/2	7/16
330	40-3/8	38-3/4	16	36-3/4	1/2
360	43-5/8	42	16	40	1/2

DISCHARGE								
D	E	F	H	J	K	L	M	DD
9-3/8	13-3/8	17-11/16	2	7-27/32	2	5-11/16	8	13-3/4
10-3/8	14-3/8	19-3/16	2	8-19/32	2	6-3/16	8	15-1/4
11-3/8	15-3/8	20-3/4	3	6-1/4	2	6-11/16	10	16-13/16
12-1/2	16-1/2	22-7/16	3	6-13/16	2	7-1/4	10	18-7/16
13-7/8	17-7/8	24-1/2	3	7-1/2	2	7-15/16	10	20-3/8
15-1/4	19-1/4	26-3/8	3	8-1/8	3	5-3/4	12	22-3/8
16-7/8	20-15/16	28-7/8	4	6-23/32	3	6-5/16	14	24-7/8
18-9/16	22-5/8	31-3/8	4	7-11/32	3	6-7/8	14	27-3/8
20-7/16	24-1/2	34-1/8	4	8-1/32	3	7-1/2	14	30-1/16
22-3/4	26-3/4	37-5/8	5	7-1/8	3	8-1/4	16	33-9/16
24-7/8	28-7/8	40-7/8	7	5-9/16	5	5-3/8	24	36-3/4
27-1/4	31-1/4	44-1/4	7	6-1/32	5	5-27/32	24	40-1/4

NOTE:  
① NOT AVAILABLE ON ANY MODEL FOR DOWNBLAST, BOTTOM ANGULAR DOWN OR TOP ANGULAR DOWN DISCHARGE POSITIONS.  
DISCHARGE FLANGE IS STANDARD ON SIZES -270 THRU -360.