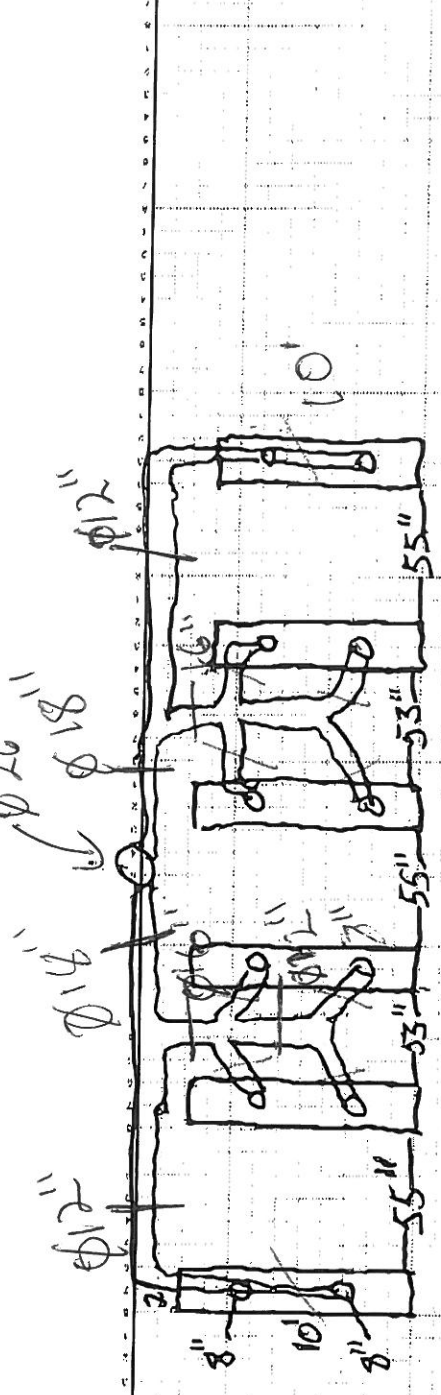


**AVANI ENVIRONMENTAL INTL, INC.**  
 Main: (919) 570-2862 • Fax: (919) 570-2863  
 www.avanienvironmental.com  
 www.weldingbooths.com  
 www.miststop.com  
 Email: info@avanienvironmental.com

JOB AG HACHURING  
 SHEET NO. \_\_\_\_\_ OF \_\_\_\_\_  
 CALCULATED BY \_\_\_\_\_ DATE \_\_\_\_\_  
 CHECKED BY \_\_\_\_\_ DATE \_\_\_\_\_  
 SCALE ATTN: CYNTHIA



FAN IS ON ROOF (17,000 CFM)  
 CEILING HEIGHT IS 34'  
 (6) 10' x 8' HOODS WITH (2) 8"  $\phi$  PICKUPS IN EACH HOOD  
 SUSPENDED 7' FROM FLOOR

12 @ 5' Drops