

✦ Installations for the unit for EB-25x18x12



✦ Installations for the unit for EB-25x18x12

Prepare below assistance tools before assembling.



Tool for back plates assembling.

Triangle form stand, use for #2
and #11 side plates assembling.

+ Installations for the unit for EB-25x18x12



Amount of holes only stands for the Part Number of Side/Back Plates. Keep the holes inside while assembling.



NO. 8



NO. 3

✚ Installations for the unit for EB-25x18x12

- Take out the number: **2/11/ Triangle form stand**

Lock **Triangle form stand** adjacent to the left side of **02** with:

Take out the Hardware number AF		
Part name	Description	Q'ty
Half-threaded Screw	3/8" x 4"	8
Flat Washer	3/8" x OD23 x 2t	16
Nylon Hex Nut	3/8"	8



Triangle form stand



✚ Installations for the unit for EB-25x18x12

Lock **Triangle form stand** adjacent to the right side of **11** with:

Take out the Hardware number AF		
Part name	Description	Q'ty
Half-threaded Screw	3/8" x 4"	8
Flat Washer	3/8" x OD23 x 2t	16
Nylon Hex Nut	3/8"	8



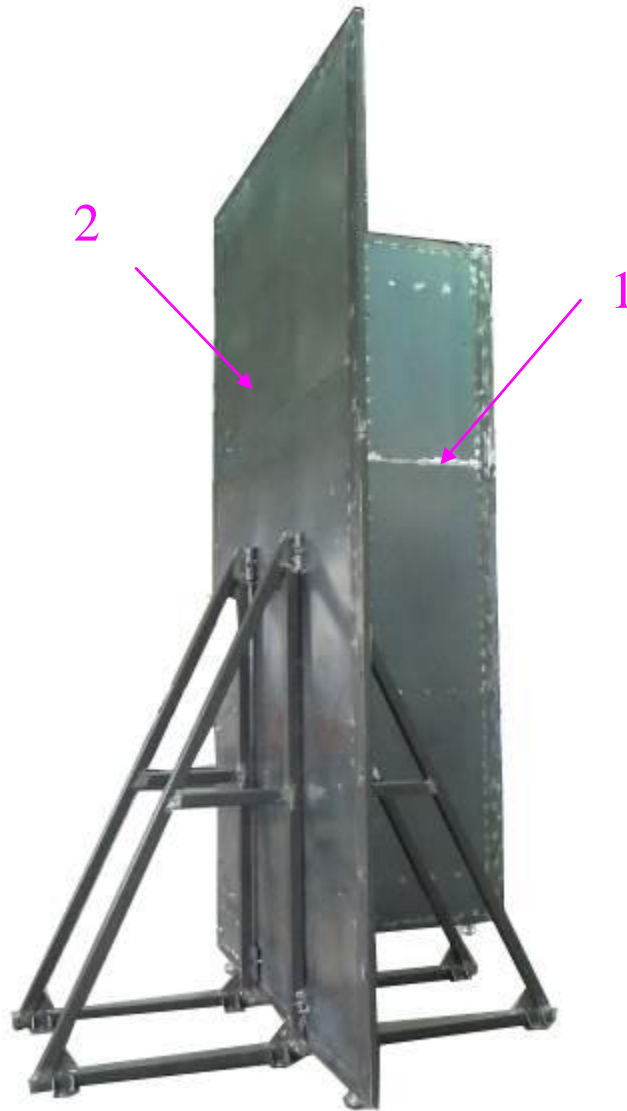
Triangle form stand

✚ Installations for the unit for EB-25x18x12

Take out the number: **1**.

- Lock **1** adjacent to the left side of **2** with:

Part name	Description	Q'ty
Half-threaded Screw	3/8" x 5"	12
Flat Washer	3/8" x OD28 x 3t	24
Nylon Hex Nut	3/8"	12



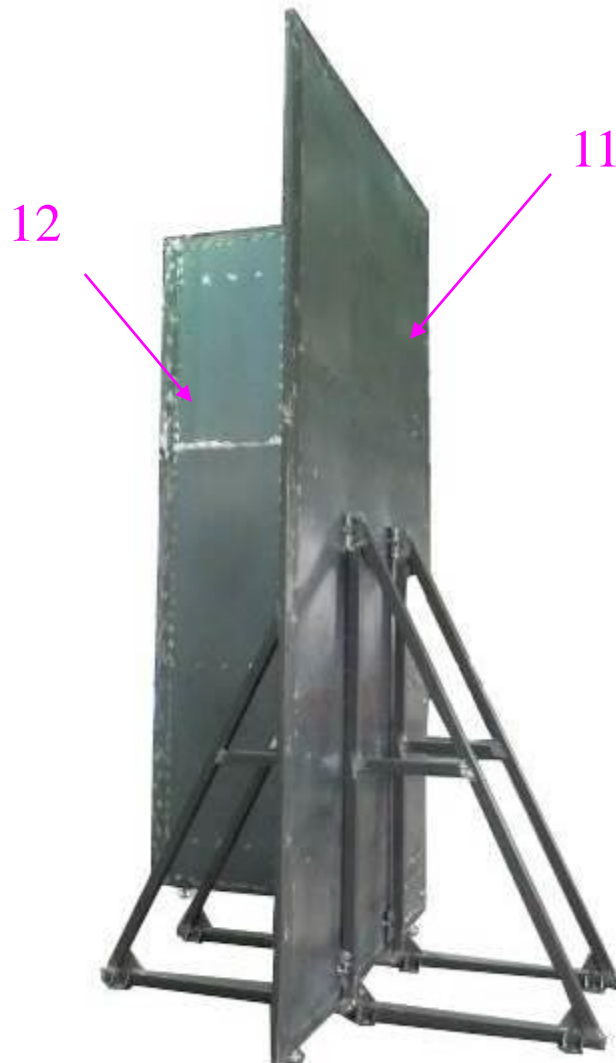
the Right

✚ Installations for the unit for EB-25x18x12

- Take out the number: **12**.
- Lock **12** adjacent to the right side of **11** with:

Part name	Description	Q'ty
Half-threaded Screw	3/8" x 5"	12
Flat Washer	3/8" x OD28 x 3t	24
Nylon Hex Nut	3/8"	12

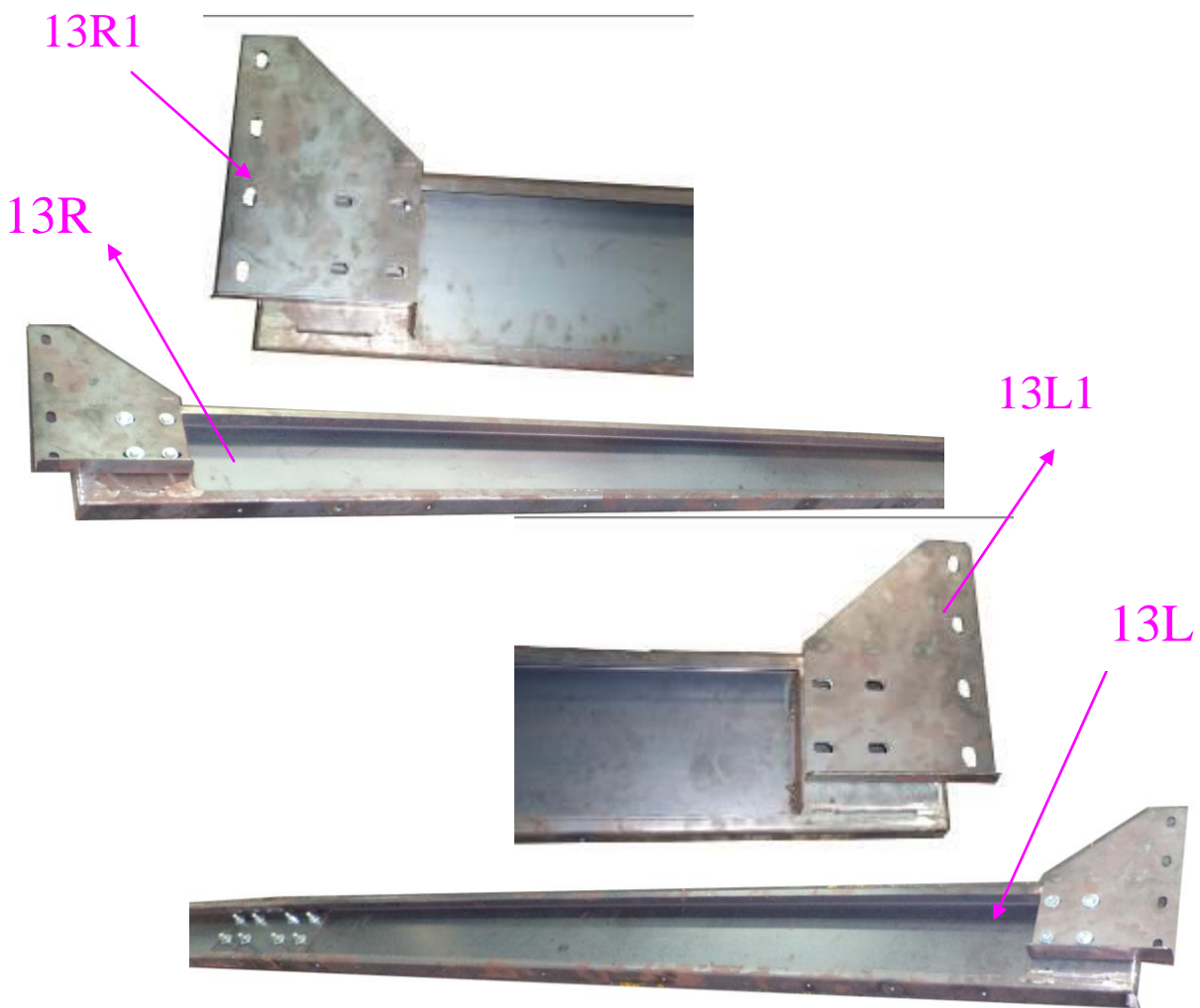
the Left



✚ Installations for the unit for EB-25x18x12

- Take out the number: **13L / 13R / 13L1 / 13R1**.
- Lock **13R1** to the **13R** and Lock **13L1** to the **13L** with :

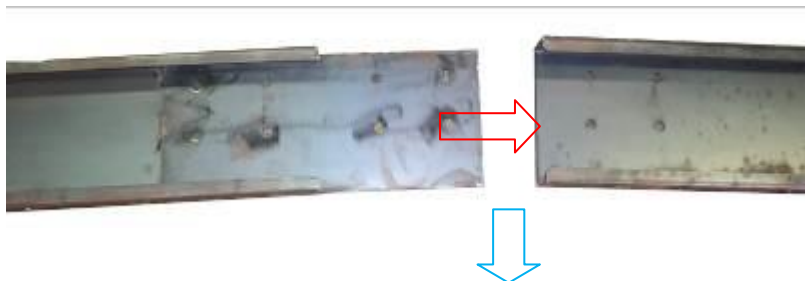
Take out the Hardware number E		
Part name	Description	Q'ty
Hex Screw	3/8" x 1-1/2"	8
Flat Washer	3/8" x OD23 x 2t	8



✚ Installations for the unit for EB-25x18x12

- Take out the number: **13L / 13R**.
- Lock **13R** adjacent to the left side of **13L** with:

Take out the Hardware number G		
Part name	Description	Q'ty
Hex Screw	1/2" x 1-1/4"	8
Flat Washer	1/2" x OD28 x 3t	16
Nylon Hex Nut	1/2"	8



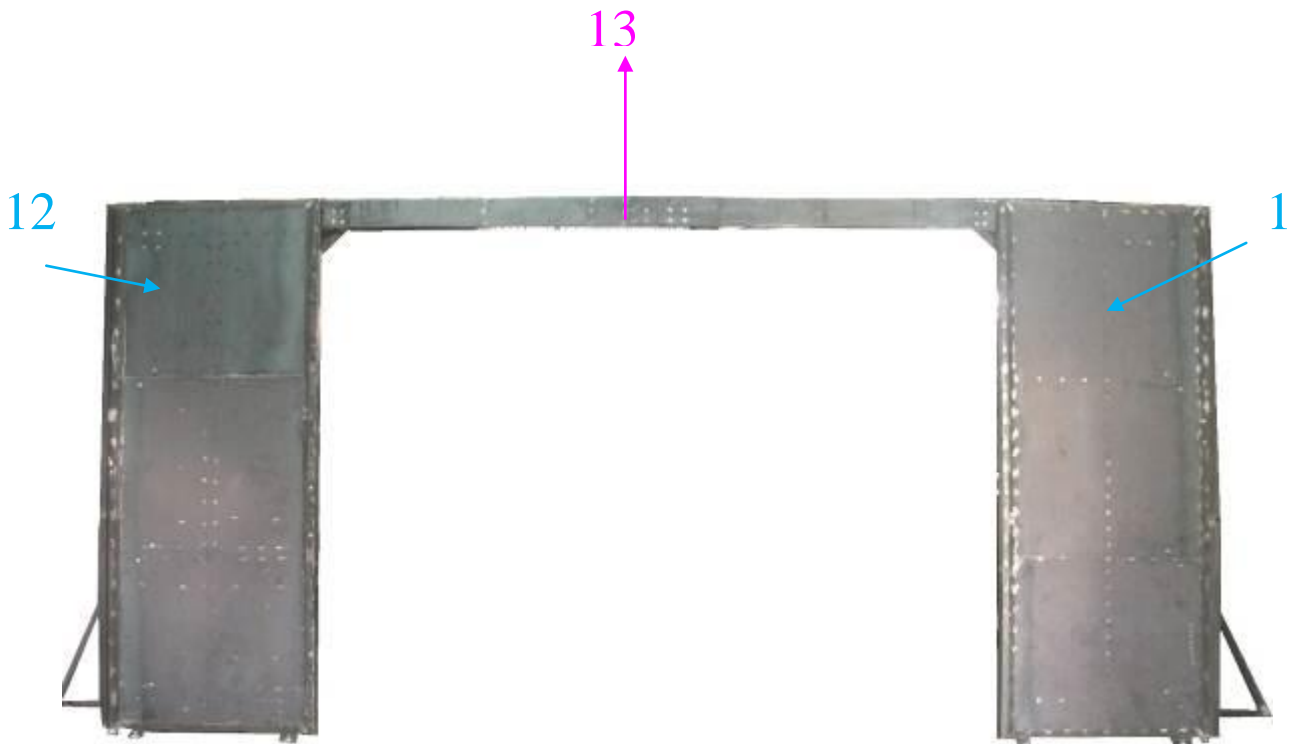
✦ Installations for the unit for EB-25x18x12

- Take out the number: **13**
- Lock **13** to the of **12** and **1** with:

Take out the Hardware number E		
Part name	Description	Q'ty
Hex Screw	3/8" x 1-1/2"	8
Flat Washer	3/8" x OD23 x 2t	8

the Left

the Right



✚ Installations for the unit for EB-25x18x12

Take out the number: **BL1**

- Lock **BL1** Backdraft of **11 and 12** with:

Part name	Description	Q'ty
Hex Screw	5/16" x 1"	90
Flat Washer	5/16" x OD23 x 2T	90



the Right



BL1

the Left

✚ Installations for the unit for EB-25x18x12

- Take out the number: **BR1**.
- Lock **BR1** Backdraft of **1 and 2** with:

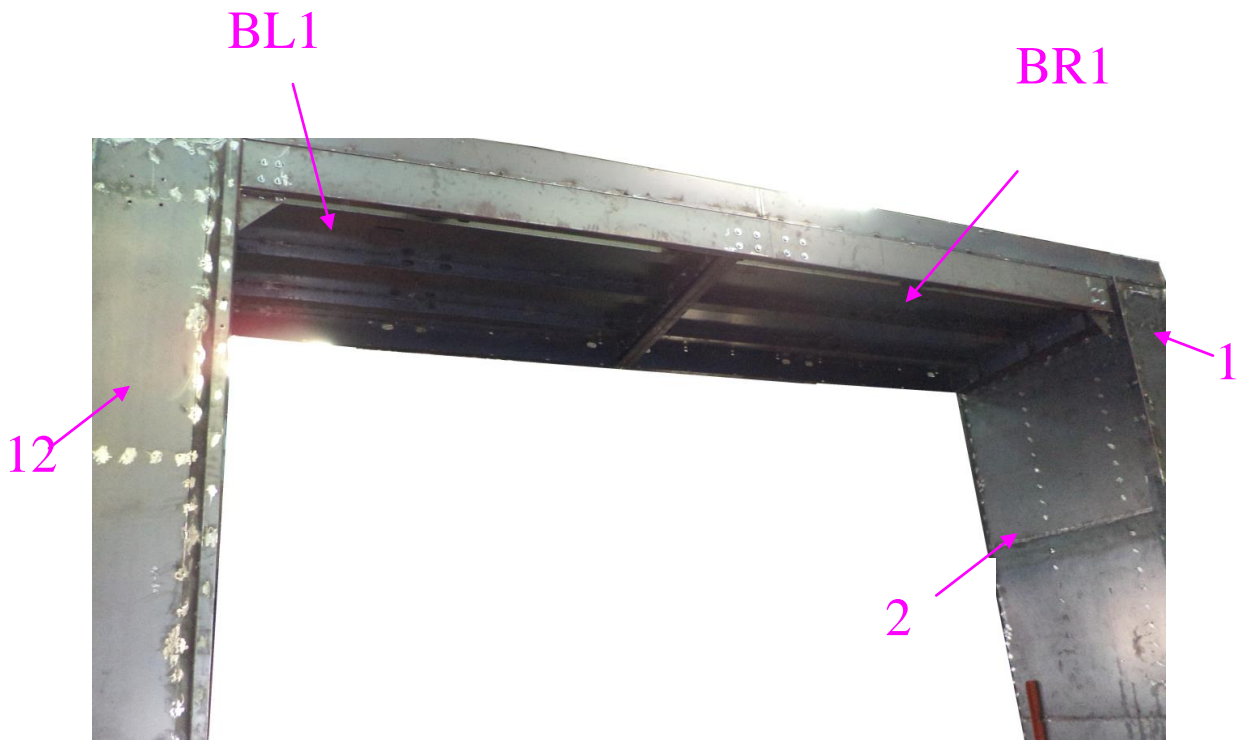
Take out the Hardware number B		
Part name	Description	Q'ty
Hex Screw	5/16" x 1"	
Flat Washer	5/16" x OD23 x 2T	

- Lock **BL1** adjacent to the right side of **BR1** with:

Take out the Hardware number H		
Part name	Description	Q'ty
Hex Screw	3/8" x 1-1/4"	22
Flat Washer	3/8" x OD23 x 2T	44
Nylon Hex Nut	3/8"	22

the Left

the Right



✚ Installations for the unit for EB-25x18x12

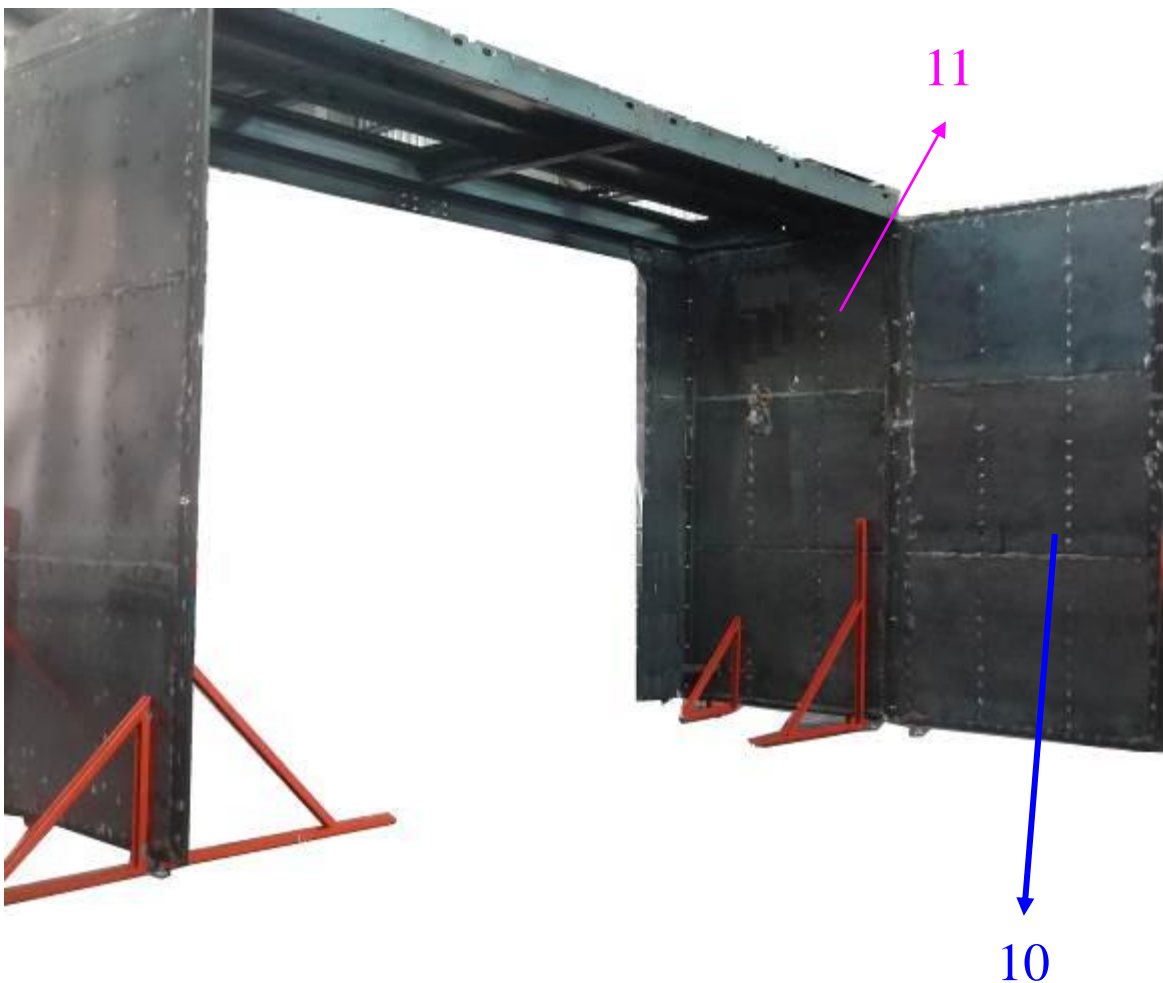
Take out the number: **10**.

- Lock **10** adjacent to the right side of **11** with:

Take out the Hardware number Y		
Part name	Description	Q'ty
Hex Screw	3/8" x 3"	12
Flat Washer	3/8" x OD28 x 2t	24
Nylon Hex Nut	3/8"	12

the Right

the Left



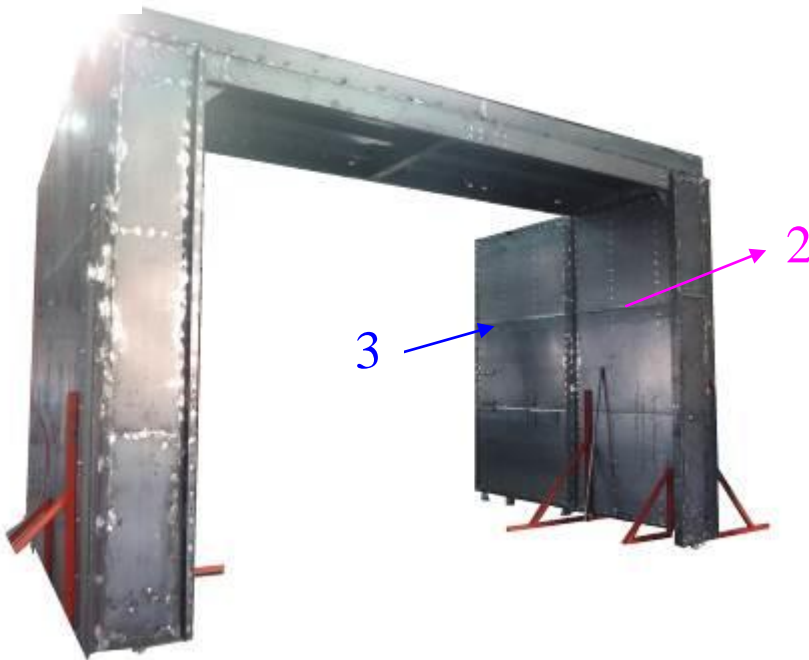
✦ Installations for the unit for EB-25x18x12

Take out the number: **2**.

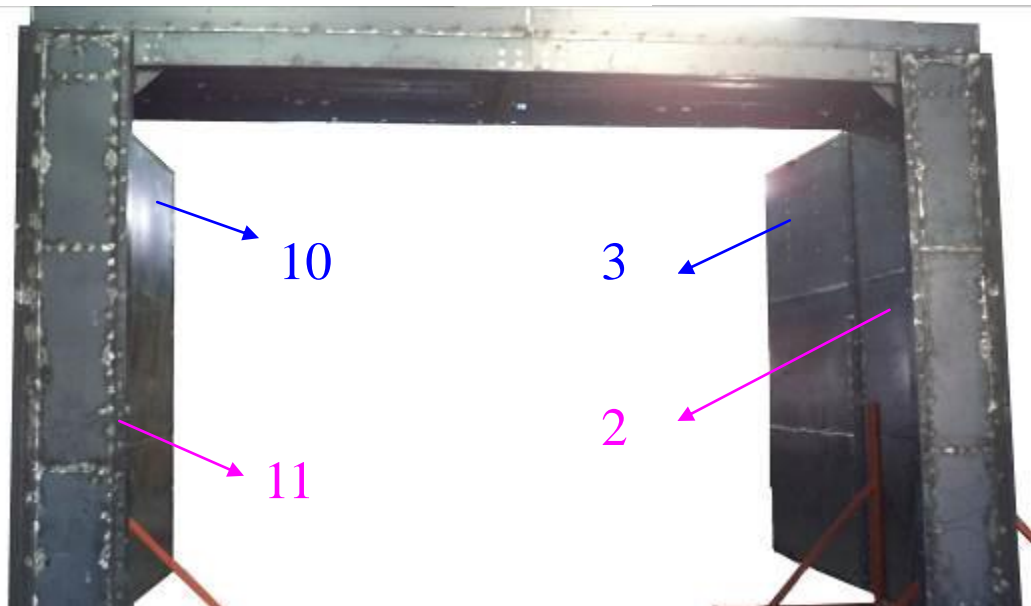
- Lock **2** adjacent to the left side of **3** with:

Take out the Hardware number Y		
Part name	Description	Q'ty
Hex Screw	3/8" x 3"	12
Flat Washer	3/8" x OD28 x 2t	24
Nylon Hex Nut	3/8"	12

the Left



the Right



✦ Installations for the unit for EB-25x18x12

- Take out the number: **BL2**.
- Lock **BL2** Backdraft of **BL1** and **10** with:

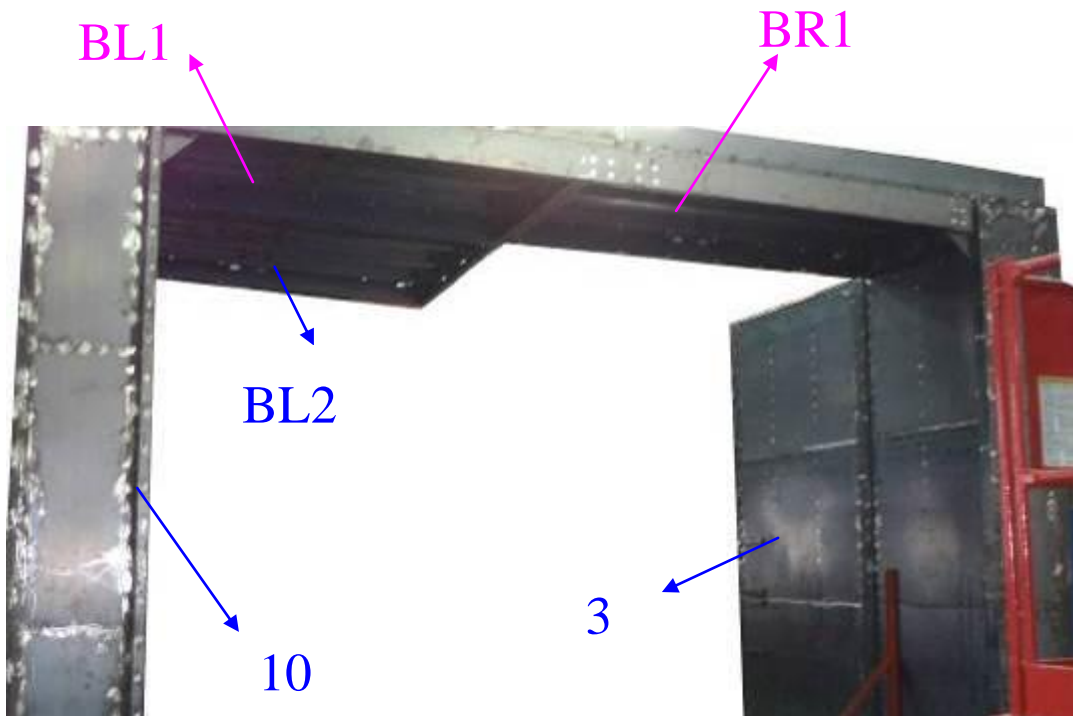
Take out the Hardware number C			
Part name	Description	Q'ty	
Hex Screw	3/8" x 1-1/4"	26	
Flat Washer	3/8" x OD23 x 2T	52	
Nylon Hex Nut	3/8"	26	

- Lock **BL2** adjacent to the right side of **10** with:

Take out the Hardware number B			
Part name	Description	Q'ty	
Hex Screw	5/16" x 1"		
Flat Washer	5/16" x OD23 x 2T		

the Right

the Left



✦ Installations for the unit for EB-25x18x12

- Take out the number: **BR2**.
- Lock **BR2** Backdraft of **BR1** and **BL2** with:

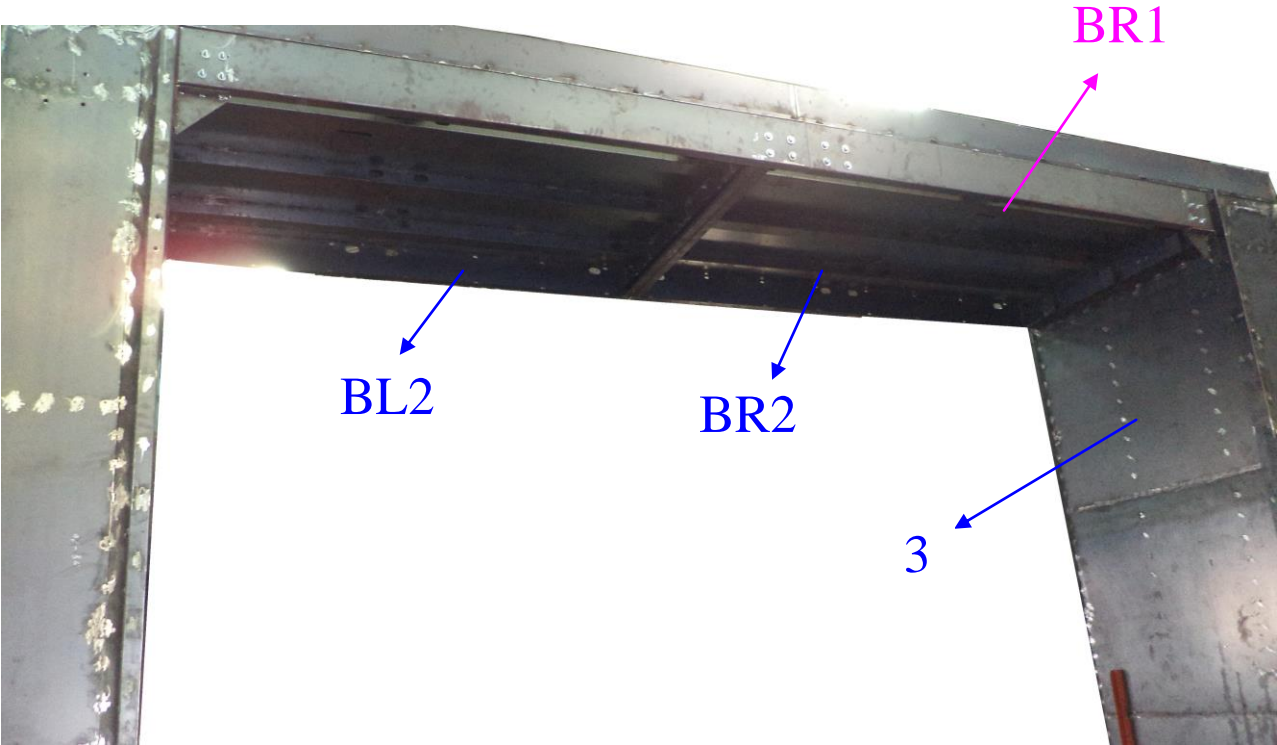
Take out the Hardware number "D" * 1 + "H" * 1		
Part name	Description	Q'ty
Hex Screw	3/8" x 1-1/4"	38
Flat Washer	3/8" x OD23 x 2T	76
Nylon Hex Nut	3/8"	38

- Lock **BR2** adjacent to the right side of **3** with:

Take out the Hardware number B		
Part name	Description	Q'ty
Hex Screw	5/16" x 1"	
Flat Washer	5/16" x OD23 x 2T	

the Right

the Left



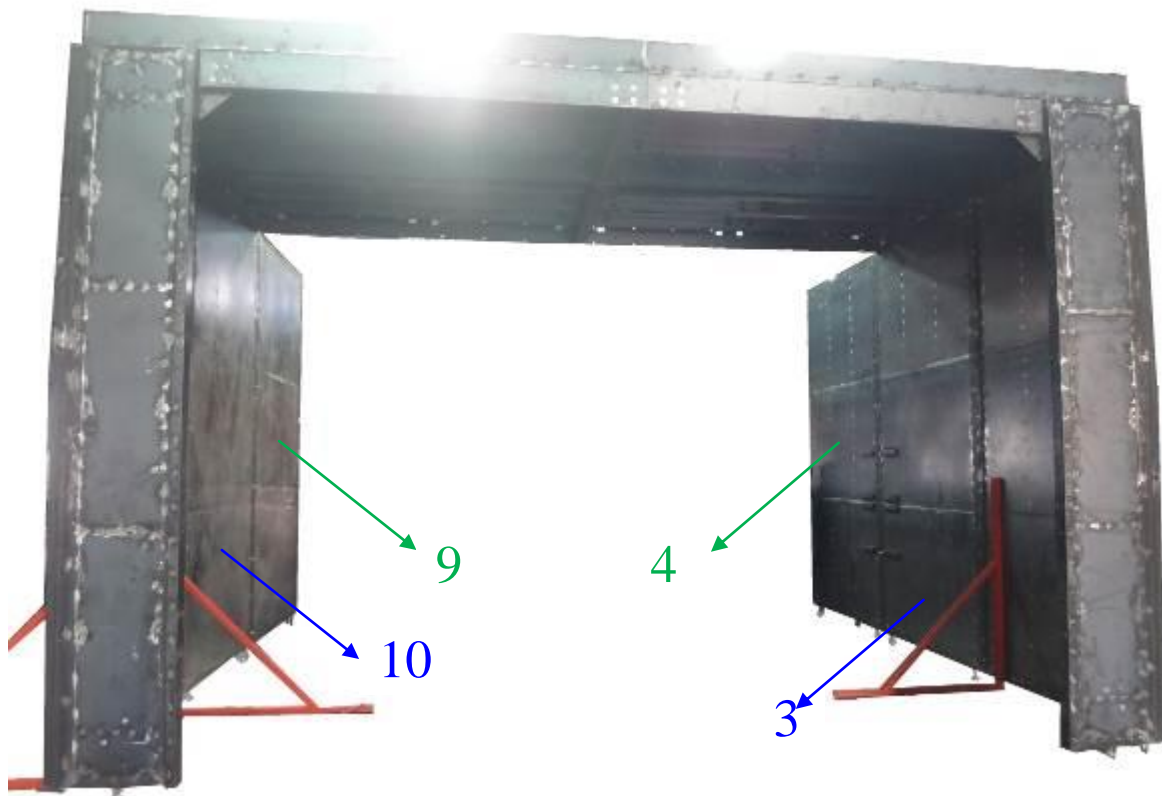
✦ Installations for the unit for EB-25x18x12

- Take out the number: **4** and **9**.
- Lock **4** Backdraft of **3** with:
- Lock **9** Backdraft of **10** with:

Take out the Hardware number Y * 2		
Part name	Description	Q'ty
Hex Screw	3/8" x 3"	24
Flat Washer	3/8" x OD28 x 3T	48
Hex Nut	3/8"	24

the Right

the Left



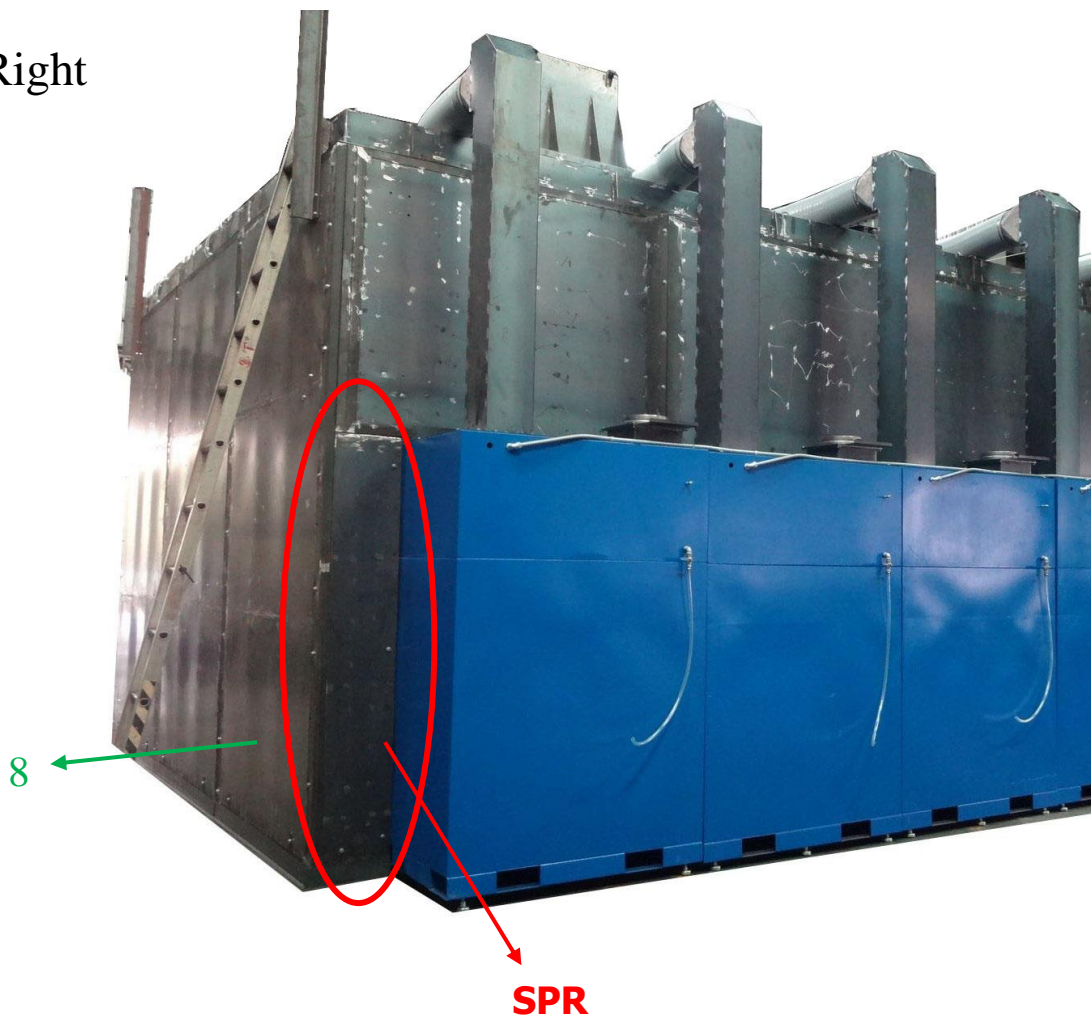
✚ Installations for the unit for EB-25x18x12

Take out another number: **SPR**

- Lock **SPR** Backdraft of **4** and **Module** with:

Take out the Hardware number AA		
Part name	Description	Q'ty
Hex Screw	3/8" x 3"	7
Flat Washer	3/8" x OD23 x 2T	14
Nylon Hex Nut	3/8"	7

the Right

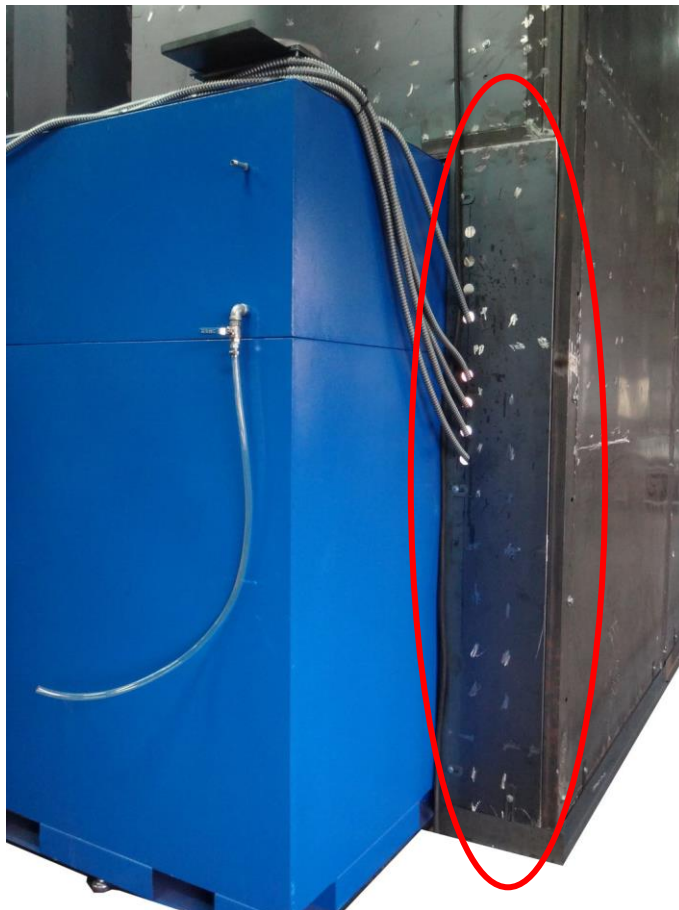


✚ Installations for the unit for EB-25x18x12

- Take out another number: **SPL**
- Lock **SPL** Backdraft of **9** and **Module** with:

Take out the Hardware number AB		
Part name	Description	Q'ty
Hex Screw	3/8" x 3"	7
Flat Washer	3/8" x OD23 x 2T	14
Nylon Hex Nut	3/8"	7

the Left



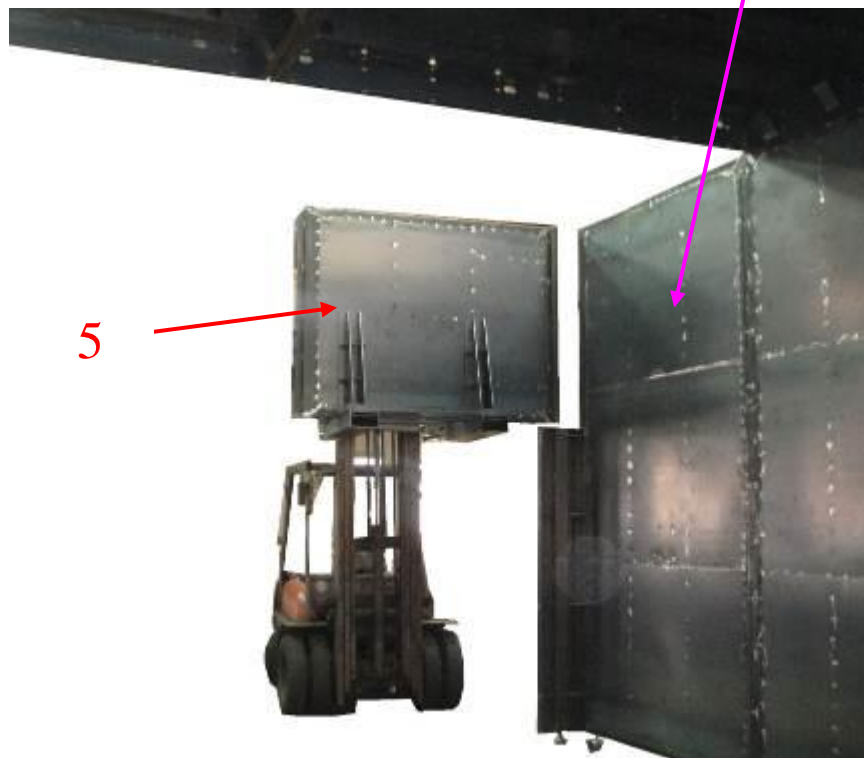
✚ Installations for the unit for EB-25x18x12

- Take out another set of number: **5**
- Lock **5** adjacent to **4** with:

Take out the Hardware number Z		
Part name	Description	Q'ty
Half-threaded Screw	1/2" x 5"	5
Flat Washer	1/2" x OD28 x 3t	10
Nylon Hex Nut	1/2"	5



the Right



✚ Installations for the unit for EB-25x18x12

- Take out another set of number: **8**
- Lock **8** adjacent to **9** with:

Take out the Hardware number Z		
Part name	Description	Q'ty
Half-threaded Screw	1/2" x 5"	5
Flat Washer	1/2" x OD28 x 3t	10
Nylon Hex Nut	1/2"	5

the Left



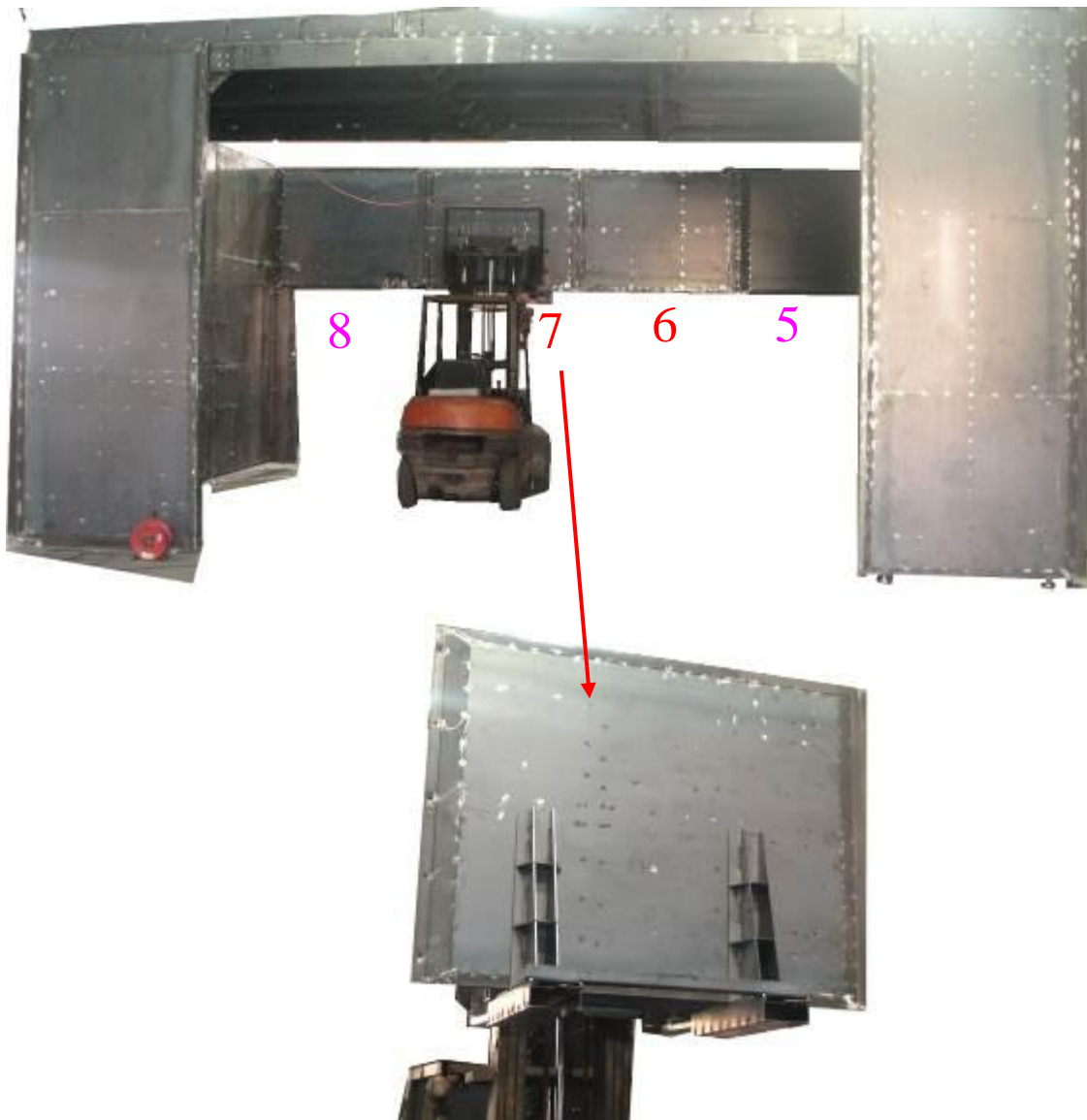
✦ Installations for the unit for EB-25x18x12

- Take out another set of number: **6 / 7**
- Lock **6** adjacent to **5** with:
Lock **7** adjacent to **8** with:
Lock **6** adjacent to **7** with:

Take out the Hardware number AC		
Part name	Description	Q'ty
Hex Screw	1/2" x 3"	15
Flat Washer	1/2" x OD28 x 3t	30
Nylon Hex Nut	1/2"	15

the Left

the Right



✦ Installations for the unit for EB-25x18x12

- Take out the number: **BR3. BL3**
- Lock **BL3** Backdraft of **BL2** with:
- Lock **BR3** Backdraft of **BR2** with:

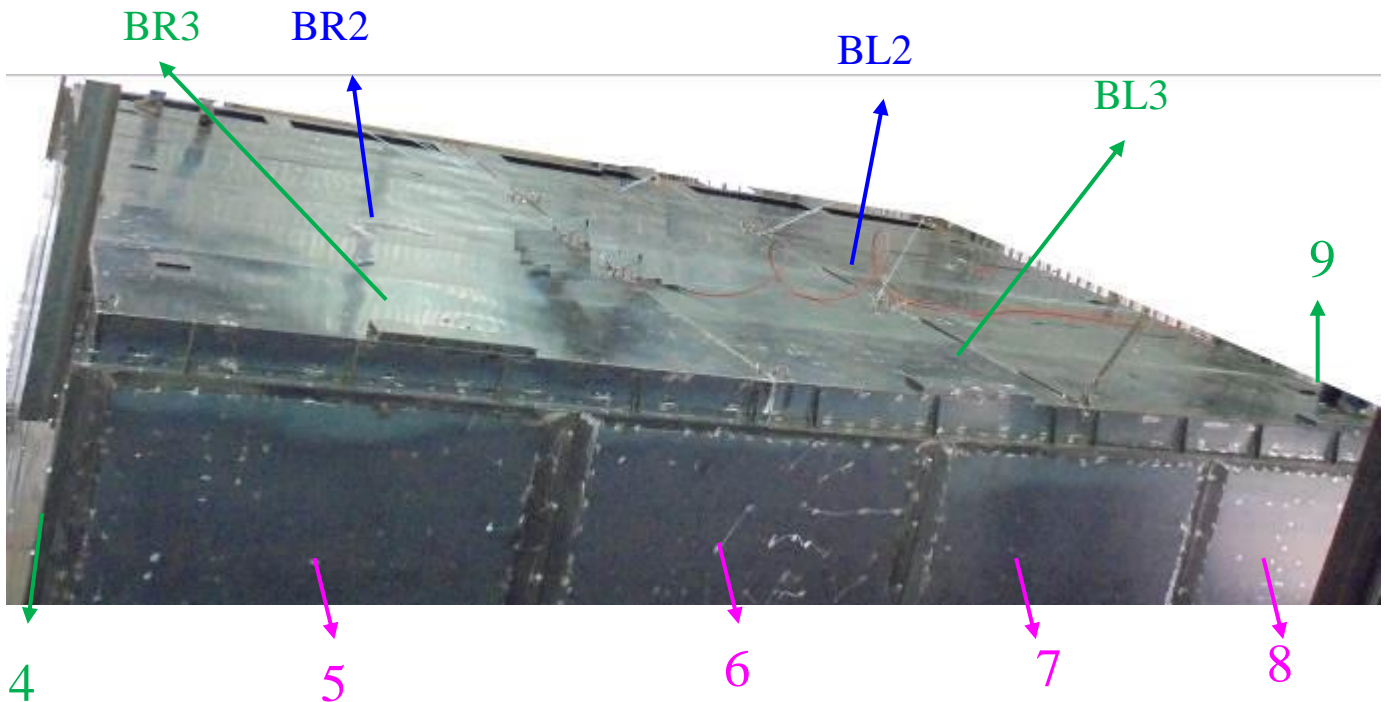
Take out the Hardware number "C" * 1 + "D" * 1		
Part name	Description	Q'ty
Hex Screw	3/8" x 1-1/4"	42
Flat Washer	3/8" x OD23 x 2T	84
Nylon Hex Nut	3/8"	42

- Lock **BL3** adjacent to the left side of **6.7.9** and **9** with:
- Lock **BR3** adjacent to the right side of **5.6** and **4** with:

Take out the Hardware number B		
Part name	Description	Q'ty
Hex Screw	5/16" x 1"	
Flat Washer	5/16" x OD23 x 2T	

the Right

the Left



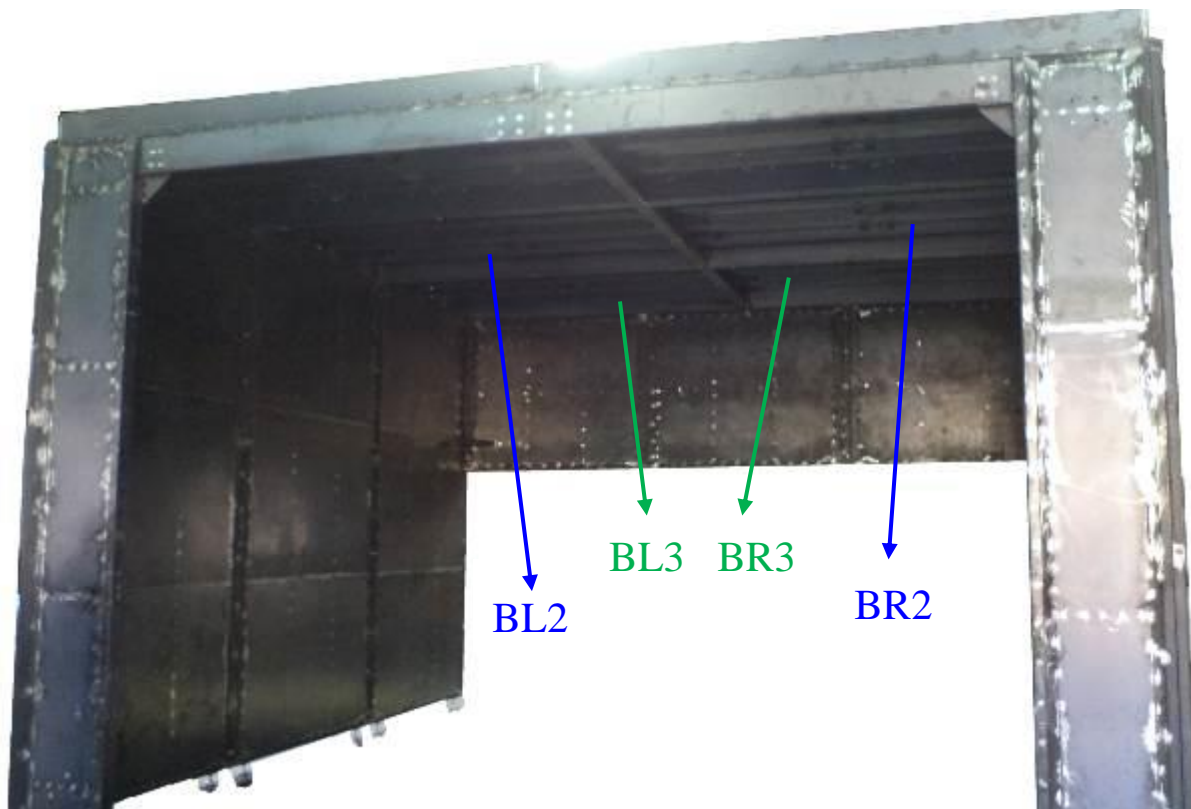
✦ Installations for the unit for EB-25x18x12

- Lock **BL3** Backdraft of **BR3** with:

Part name	Description	Q'ty
Hex Screw	3/8" x 1-1/4"	22
Flat Washer	3/8" x OD23 x 2T	44
Nylon Hex Nut	3/8"	22

the Right

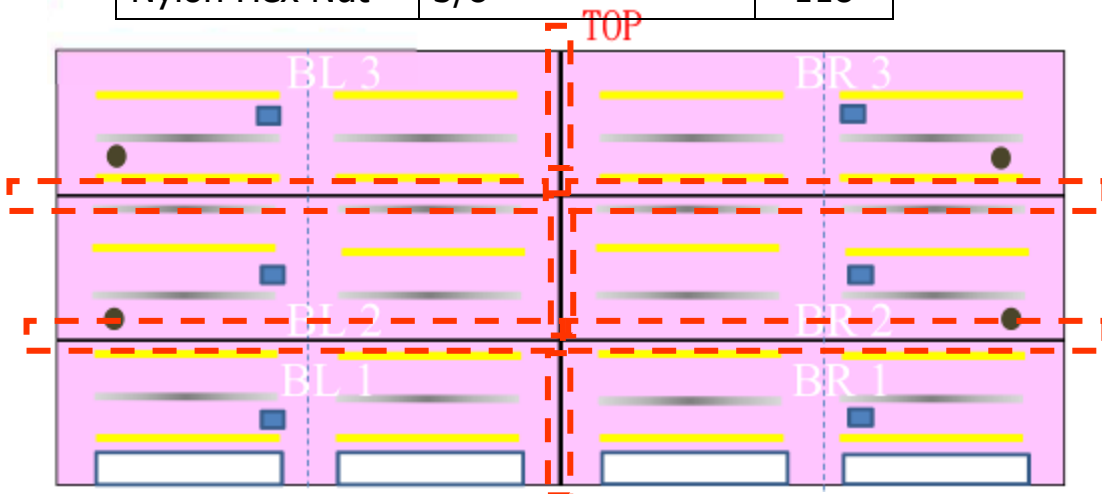
the Left



✚ Installations for the unit for EB-25x18x12

- Lock **Cover** for Top Plates Connection Part
 - Lock **BL1** adjacent of **BR1** with:
 - Lock **BL2** adjacent of **BR2** with:
 - Lock **BL3** adjacent of **BR3** with:
 - Lock **BL1** adjacent of **BL2** with:
 - Lock **BL2** adjacent of **BL3** with:
 - Lock **BR1** adjacent of **BR2** with:
 - Lock **BR2** adjacent of **BR3** with:

Take out the Hardware number A1 + A2 + A3		
Part name	Description	Q'ty
Hex Screw	3/8" x 1-1/4"	118
Flat Washer	3/8" x OD23 x 2T	236
Nylon Hex Nut	3/8"	118



✚ Installations for the unit for EB-25x18x12

Take out another number: **FB** / **FM**

- Lock **FM** Backdraft of **side panel** and **top panel** with:
- Lock **FB** Backdraft of **Top panel** with:

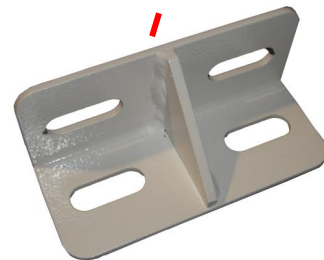
Part name	Description	Q'ty
Hex Screw	5/16" x 1"	24
Flat Washer	5/16" x OD23 x 2T	24



FM



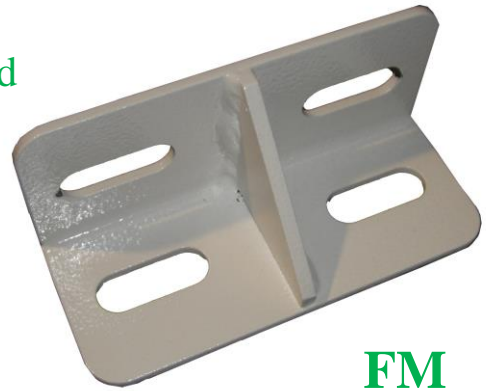
FB



FM

✦ Installations for the unit for EB-25x18x12

Right side and
Left side



FM

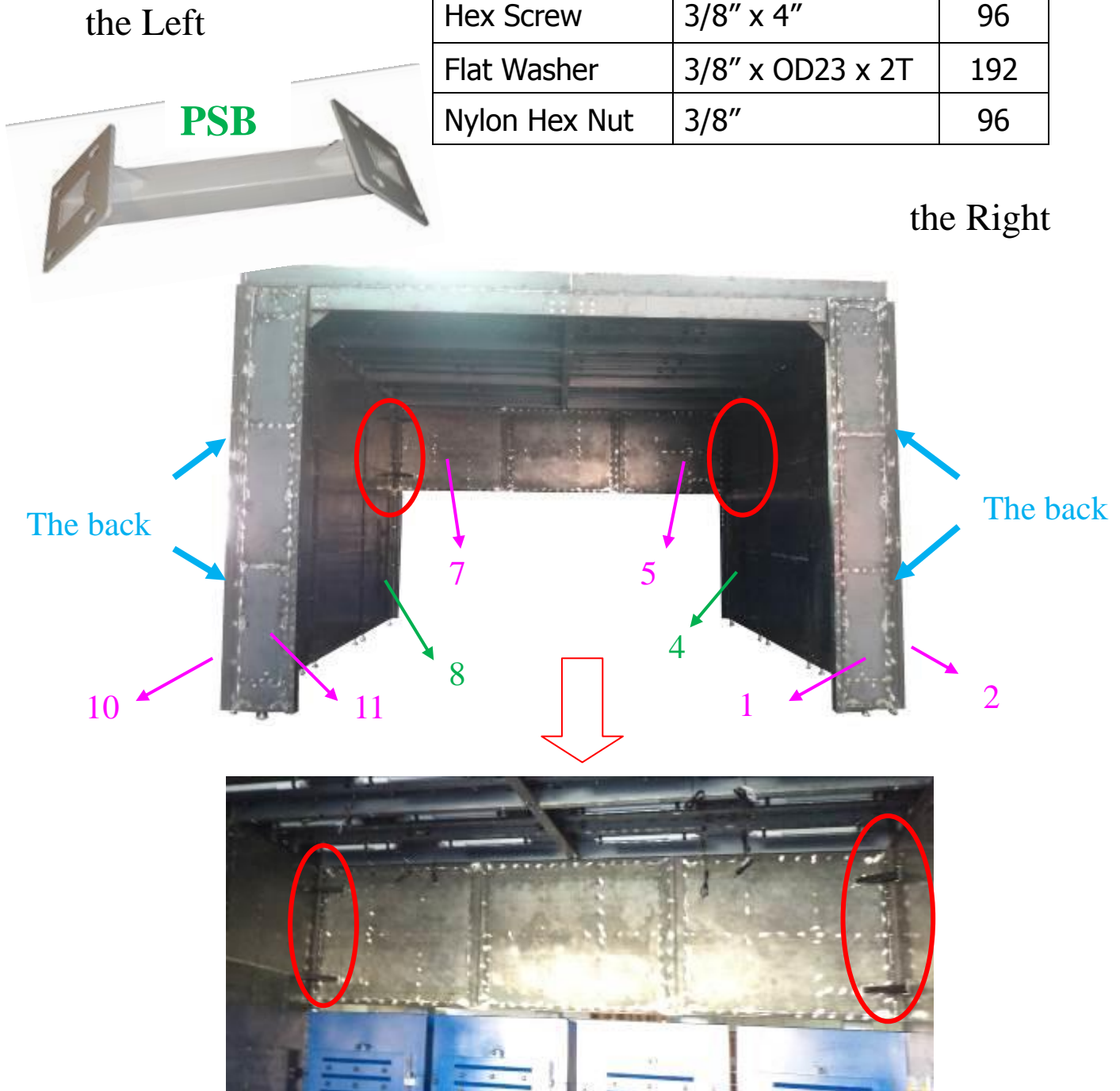


FB

✚ Installations for the unit for EB-25x18x12

- Lock **PSB** Backdraft of **side NO.1+2** with:
- Lock **PSB** Backdraft of **side NO.4+5** with:
- Lock **PSB** Backdraft of **side NO.8+9** with:
- Lock **PSB** Backdraft of **side NO.11+12** with:

Part name	Description	Q'ty
Hex Screw	3/8" x 4"	96
Flat Washer	3/8" x OD23 x 2T	192
Nylon Hex Nut	3/8"	96



✚ Installations for the unit for EB-25x18x12

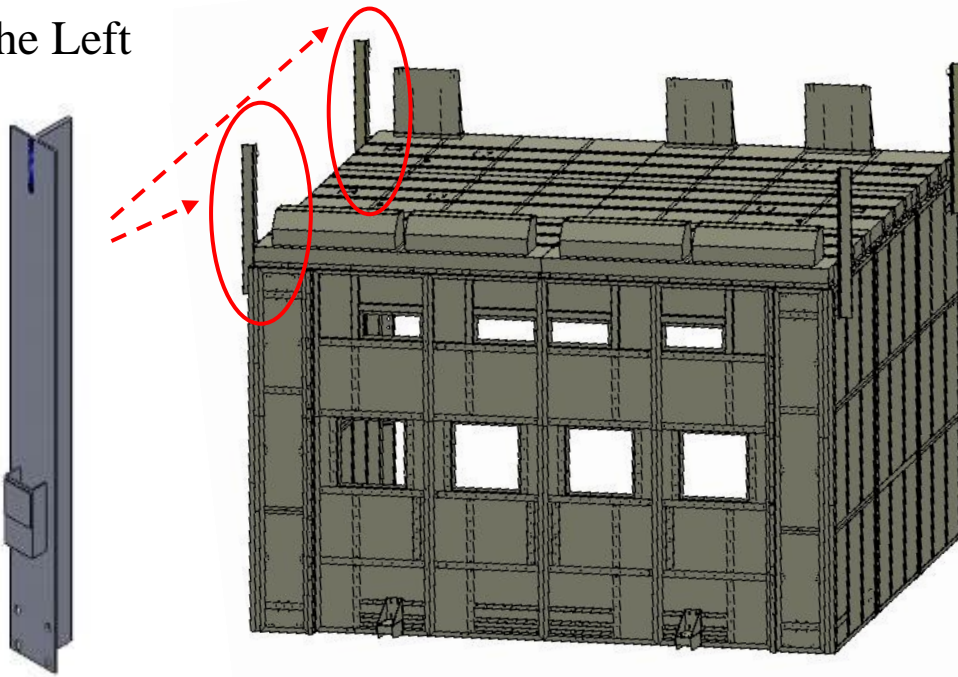
the Right

the Left



+ Installations for the unit for EB-25x18x12

the Left

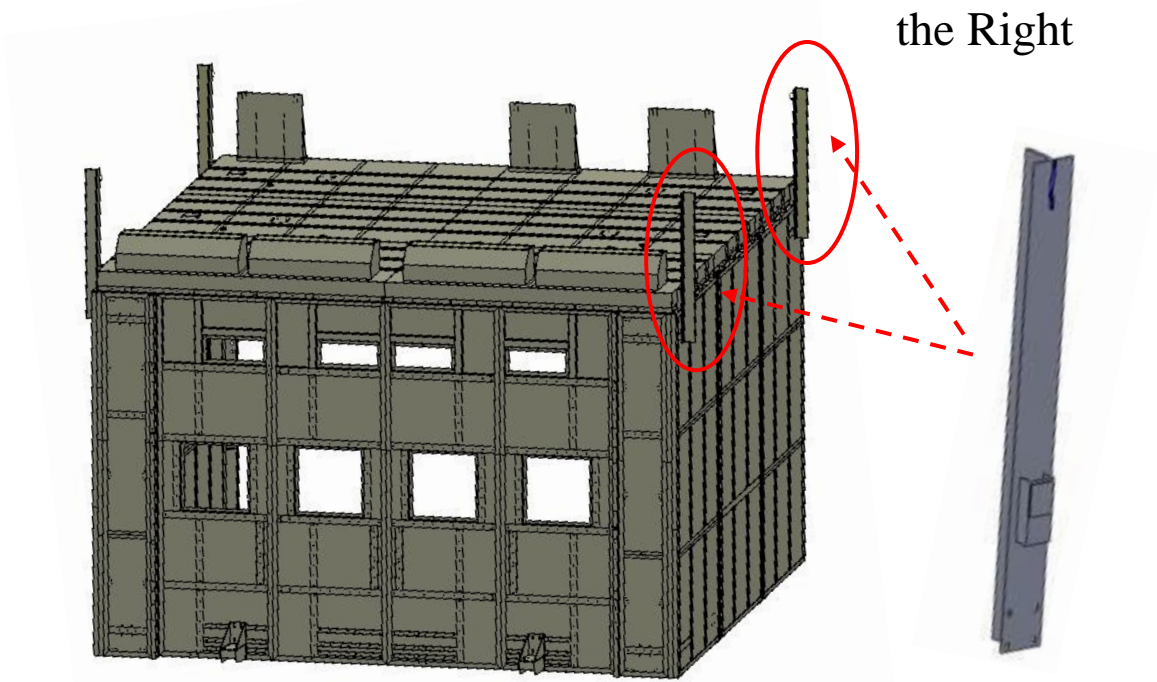


outside



inside

+ Installations for the unit for EB-25x18x12



the Right

outside



inside



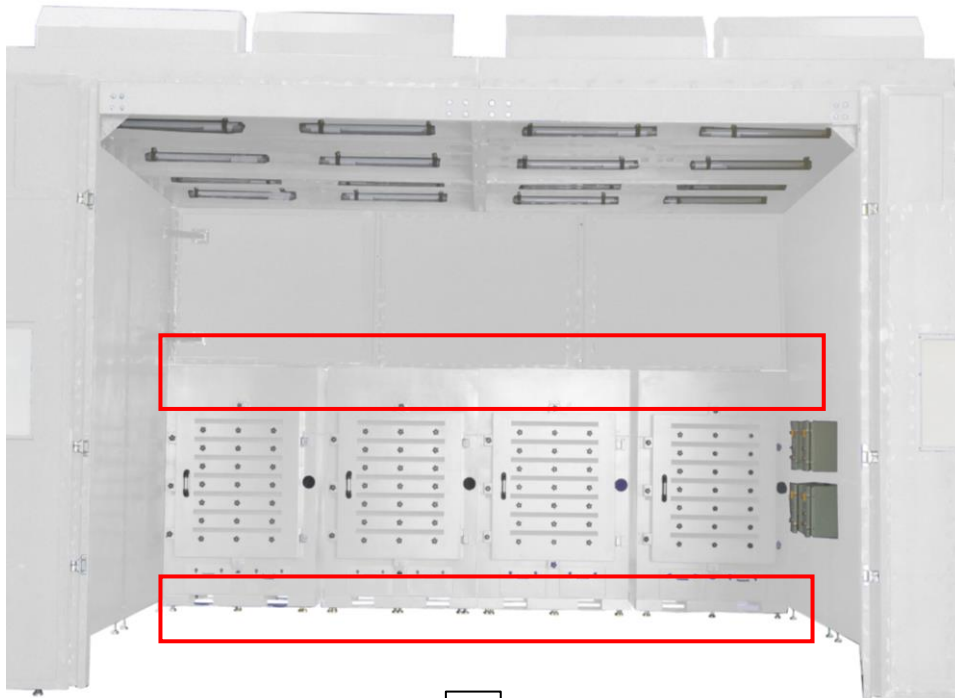
✚ Installations for the unit for EB-25x18x12

- Take out another set of number: **FE-2100L-5-4**
Lock **4 units FE-2100L-5-4** Connection

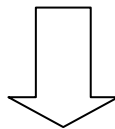
Take out the Hardware number AH			
Part name	Description	Q'ty	
Hex Screw	3/8" x 2"	32	
Flat Washer	3/8" x OD23 x 2t	64	
Nylon Hex Nut	3/8"	32	

the Left

the Right



the front



the back

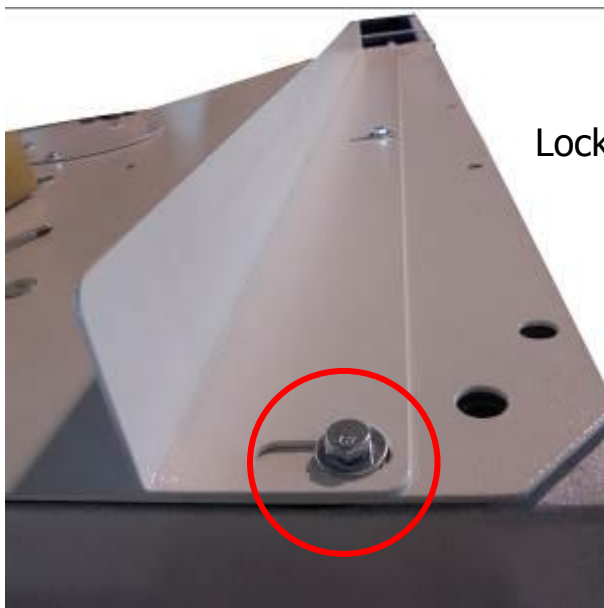
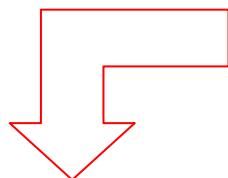
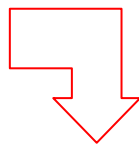


✦ Installations for the unit for EB-25x18x12

Above the machine



Loosen the screws



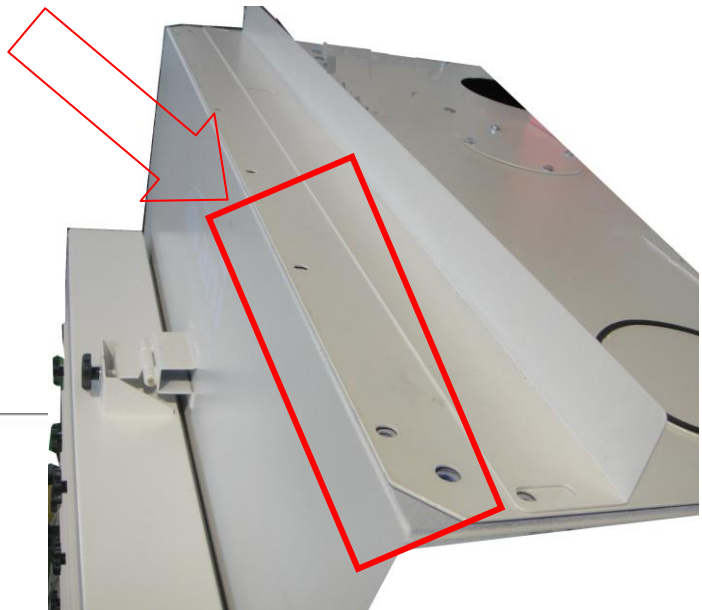
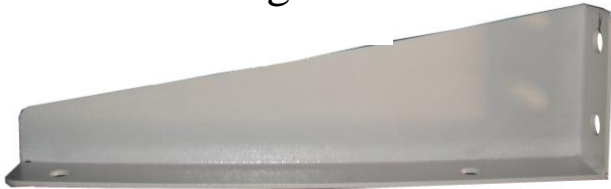
Lock the boards back and screw tightly.

✚ Installations for the unit for EB-25x18x12

the Left



the Right



Loosen the screws



Lock the boards back and screw tightly.

the Left



the Right

+ Installations for the unit for EB-25x18x12

- Take out the number: **Wheel**



Complete Assembled.



✚ Installations for the unit for EB-25x18x12

- Take out the number: **Wheel Caster Left.**

Take out the Hardware number M		
Part name	Description	Q'ty
Half-threaded Screw	3/8" x 3-1/2"	16
Flat Washer	3/8" x OD28 x 3t	32
Nylon Hex Nut	3/8"	16

- Take out the number: **Wheel Caster Right.**

Take out the Hardware number N		
Part name	Description	Q'ty
Half-threaded Screw	3/8" x 3-1/2"	16
Flat Washer	3/8" x OD28 x 3t	32
Nylon Hex Nut	3/8"	16



✚ Installations for the unit for EB-25x18x12

Take out another set of number: **DR1** / **DL1**

the Left

the Right

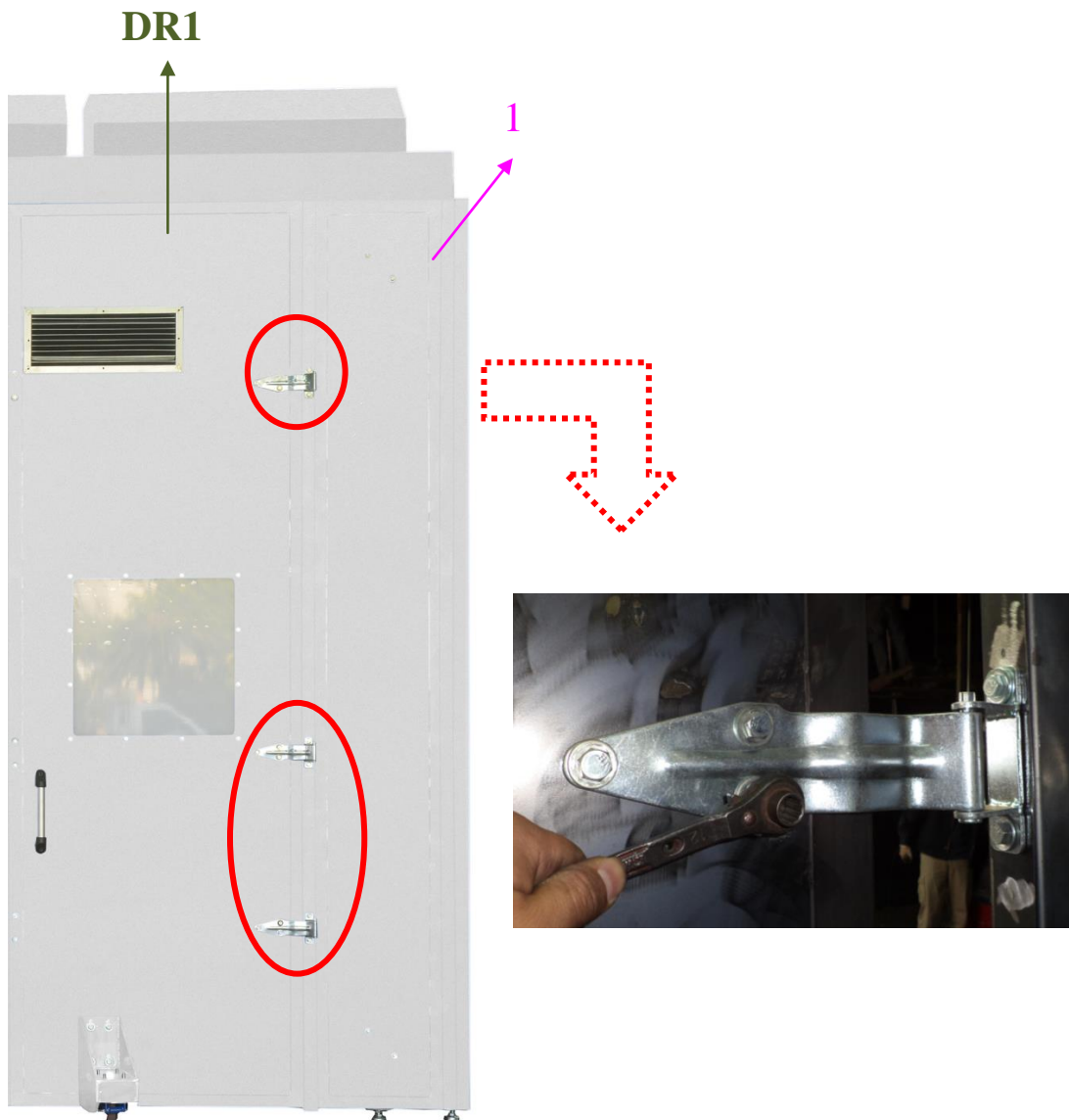


✚ Installations for the unit for EB-25x18x12

Lock **DR1** Backdraft of **1** with:

Take out the Hardware number I		
Part name	Description	Q'ty
Hex Screw	3/8" x 1"	15
Flat Washer	3/8" x OD23 x 2t	15

the Right

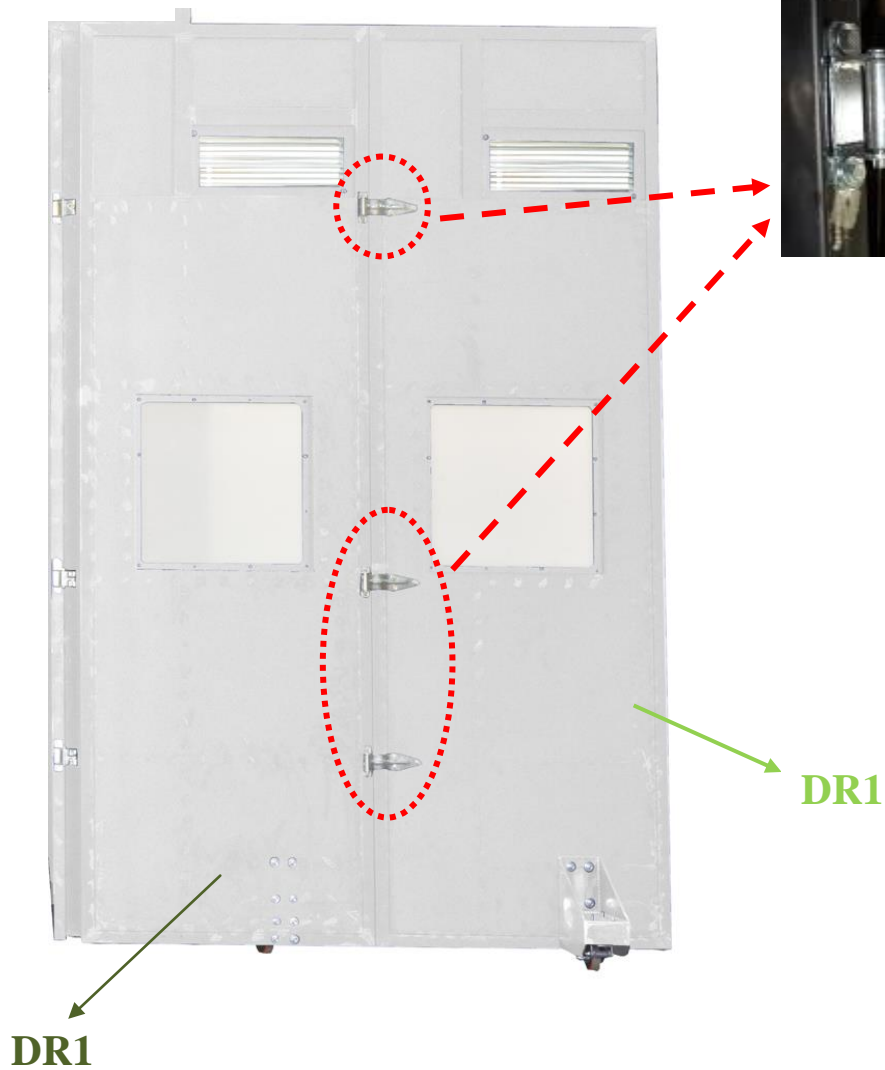


✚ Installations for the unit for EB-25x18x12

Lock **DR1** Backdraft of **DR1** with:

Take out the Hardware number L		
Part name	Description	Q'ty
Hex Screw	3/8" x 1"	6
Flat Washer	3/8" x OD23 x 2t	6
Hex Screw	3/8" x 3"	9
Flat Washer	3/8" x OD23 x 2t	18
Nylon Hex Nut	3/8"	9

the Right



✚ Installations for the unit for EB-25x18x12

Lock **DL1** Backdraft of **12** with:

Take out the Hardware number J		
Part name	Description	Q'ty
Hex Screw	3/8" x 1"	15
Flat Washer	3/8" x OD23 x 2t	15

the Left

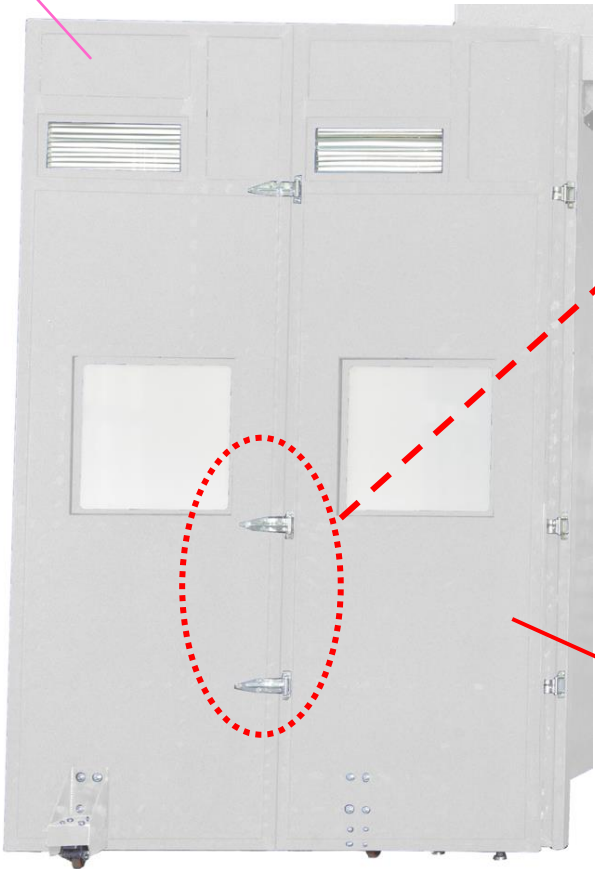


✦ Installations for the unit for EB-25x18x12

Take out the Hardware number K		
Part name	Description	Q'ty
Hex Screw	3/8" x 1"	6
Flat Washer	3/8" x OD23 x 2t	6
Hex Screw	3/8" x 3"	9
Flat Washer	3/8" x OD23 x 2t	18
Hex Nut	3/8"	9

the Left

DL1



DL1

✚ Installations for the unit for EB-25x18x12

- Take out the number: **Acrylic Sheet**.
- Lock **Acrylic Sheet** to the **DR1 / DL1** with:

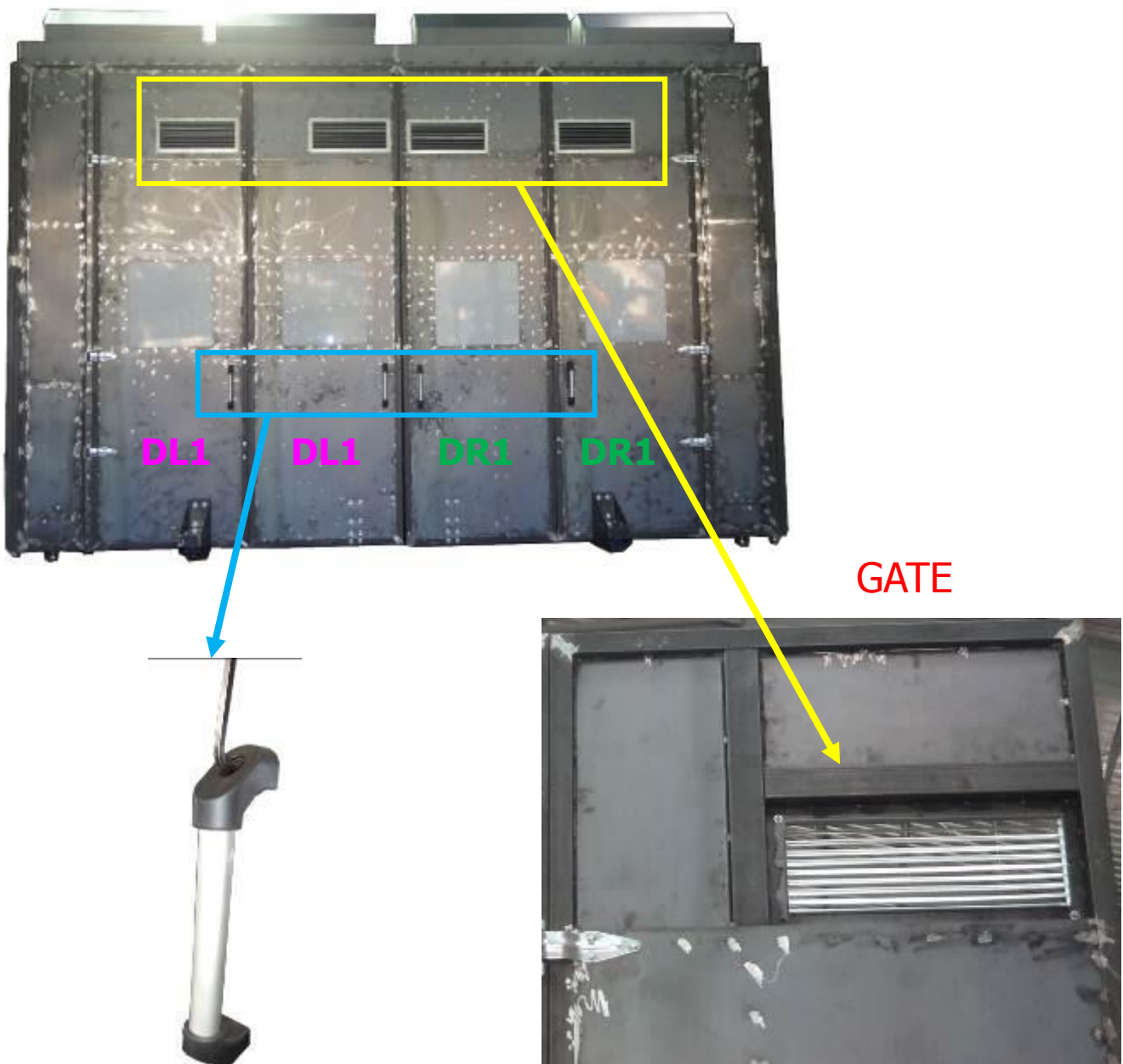
Take out the Hardware number Q		
Part name	Description	Q'ty
Hex Screw	1/4" x 1-1/4"	48
Flat Washer	1/4" x OD19 x 2t	96
Hex Nut	1/4"	48



✚ Installations for the unit for EB-25x18x12

- Take out the number: **GATE**.
- Lock **GATE** to the **DR1** / **DL1** with:

Take out the Hardware number R		
Part name	Description	Q'ty
Hex Screw	1/4" x 1-1/4"	40
Flat Washer	1/4" x OD19 x 2t	80
Hex Nut	1/4"	40



✚ Installations for the unit for EB-25x18x12

- Take out the number: **Control Box**
- Lock **Control Box** adjacent to the **9** and **10** with:

Take out the Hardware number P		
Part name	Description	Q'ty
Hex Screw	1/4" x 3/4"	20
Flat Washer	1/4" x OD13 x 2t	20



✦ Installations for the unit for EB-25x18x12



EB-L-5-4 Control Box



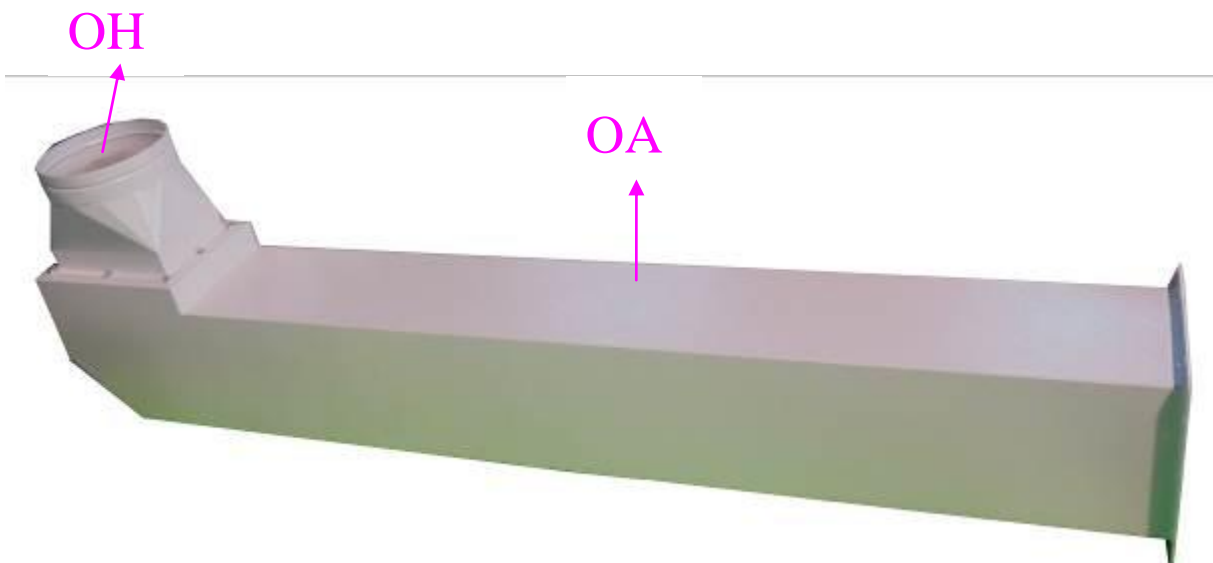
✚ Installations for the unit for EB-25x18x12

Take out the number: **OH / OA**

- Lock **OH** to the **OA** with:

Part name	Description	Q'ty
Hex Screw	5/16" x 3/4"	40
Flat Washer	5/16" x OD18 x 2T	40

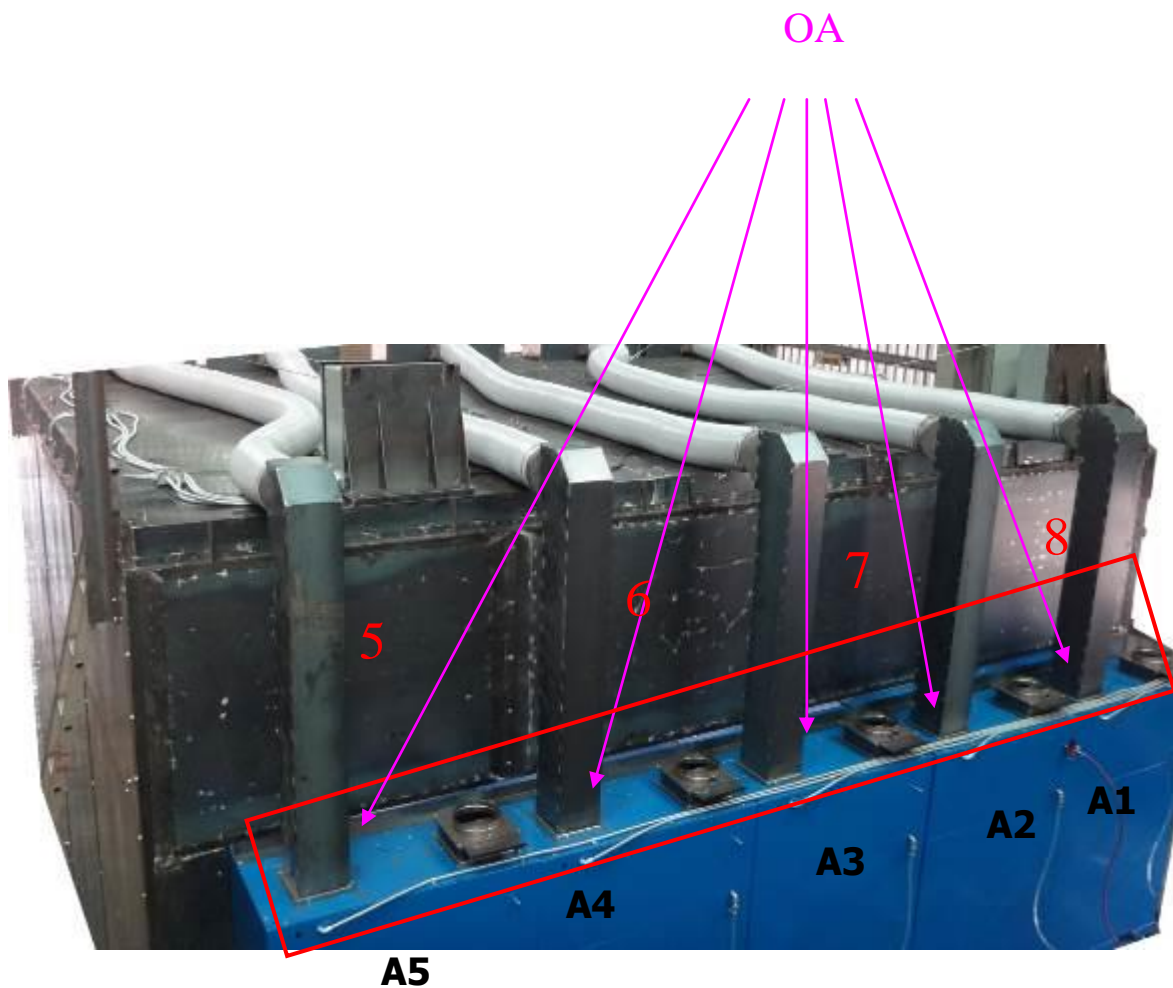
Complete Assembled.



✚ Installations for the unit for EB-25x18x12

- Lock **OA** to the **A1 / A2 / A3 / A4 / A5** with:

Part name	Description	Q'ty
Hex Screw	5/16" x 1"	40
Flat Washer	5/16" x OD23 x 2T	40

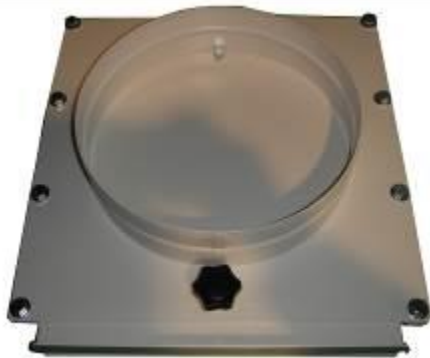


✦ Installations for the unit for EB-25x18x12

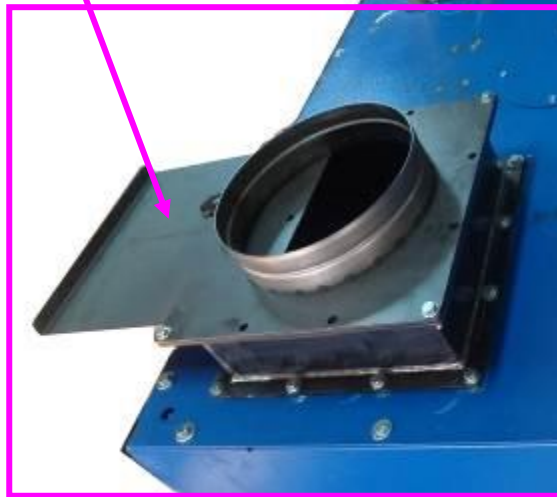
Take out the number: **OG**

- Lock **OG** to the **A1 / A2 / A3 / A4 / A5** with:

Part name	Description	Q'ty
Hex Screw	5/16" x 1"	60
Flat Washer	5/16" x OD18 x 2T	60



OG



Open 1/3

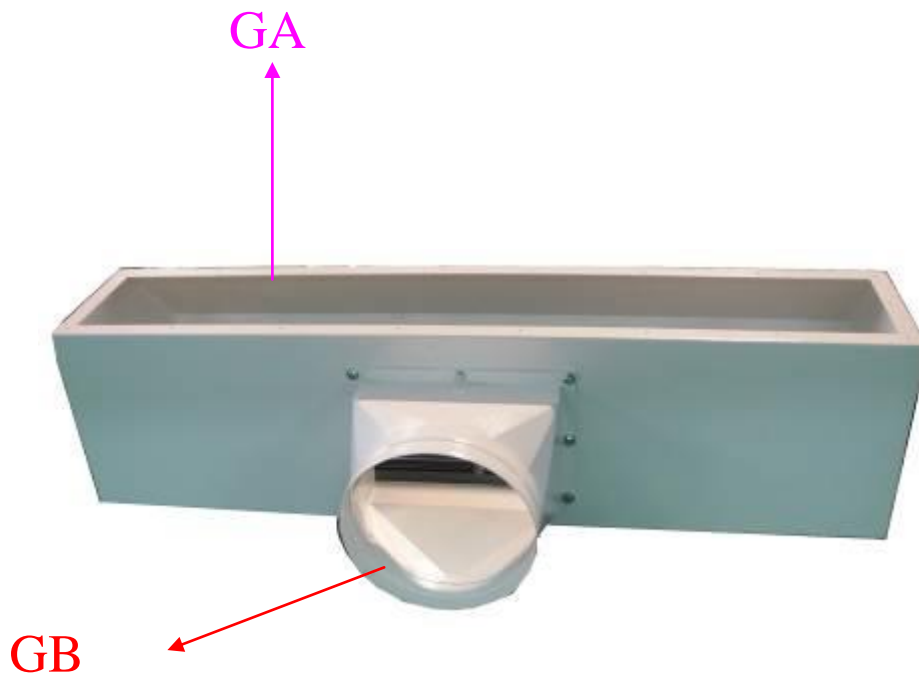
The result is the best.

+ Installations for the unit for EB-25x18x12

- Lock **GB** to the **GA** with:

Take out the Hardware number U		
Part name	Description	Q'ty
Hex Screw	5/16" x 3/4"	40
Flat Washer	5/16" x OD18 x 2t	40

Complete Assembled.



✦ Installations for the unit for EB-25x18x12

- Lock **GC** to the **GA** with:

Part name	Description	Q'ty
Phillips Head Sheet Metal Screw	M4 x 12	90



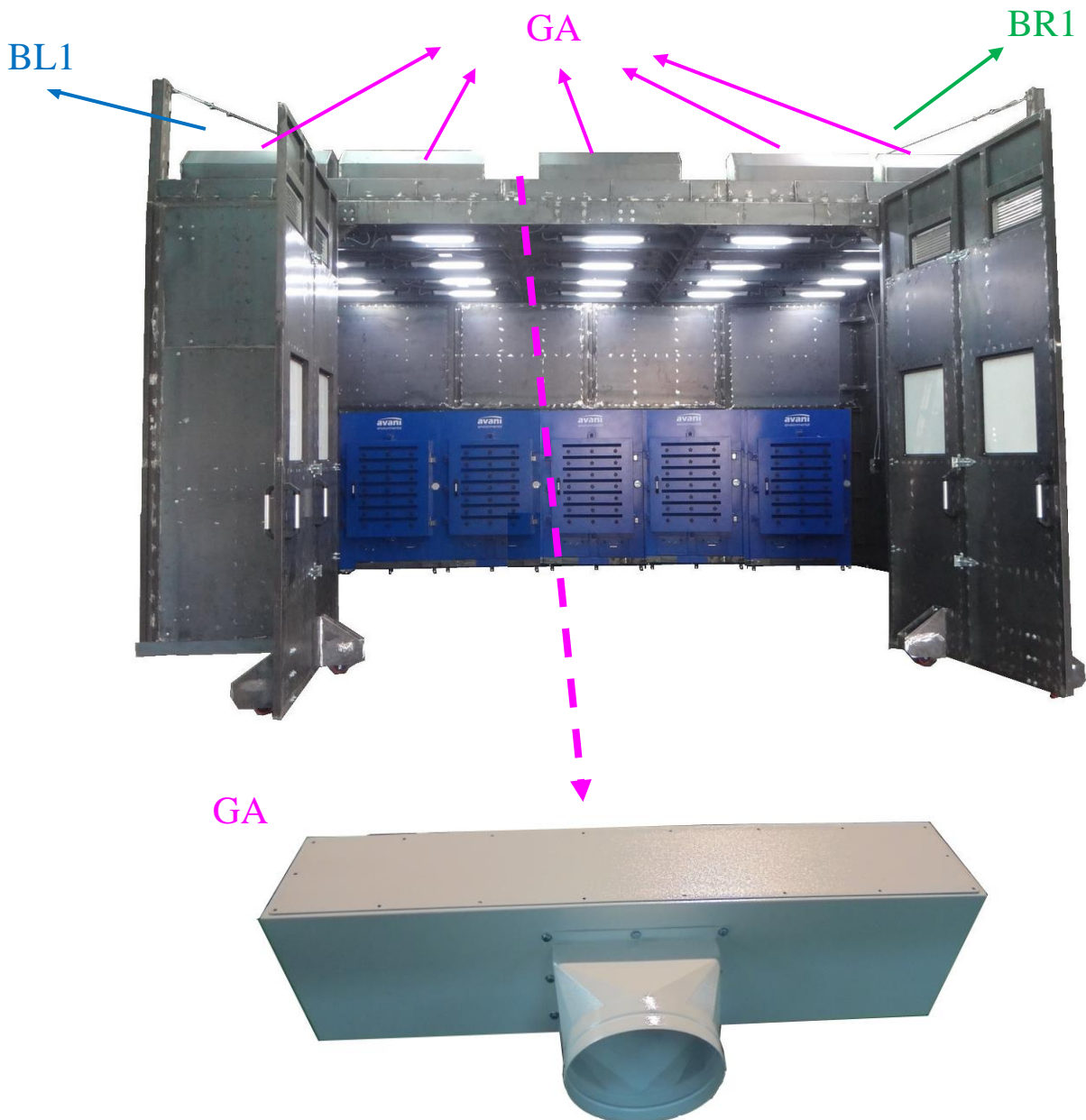
Complete Assembled.



✦ Installations for the unit for EB-25x18x12

- Take out the number: **GA / GB / GC**
- Lock **GA** to the **BL1** and **BR1** with:

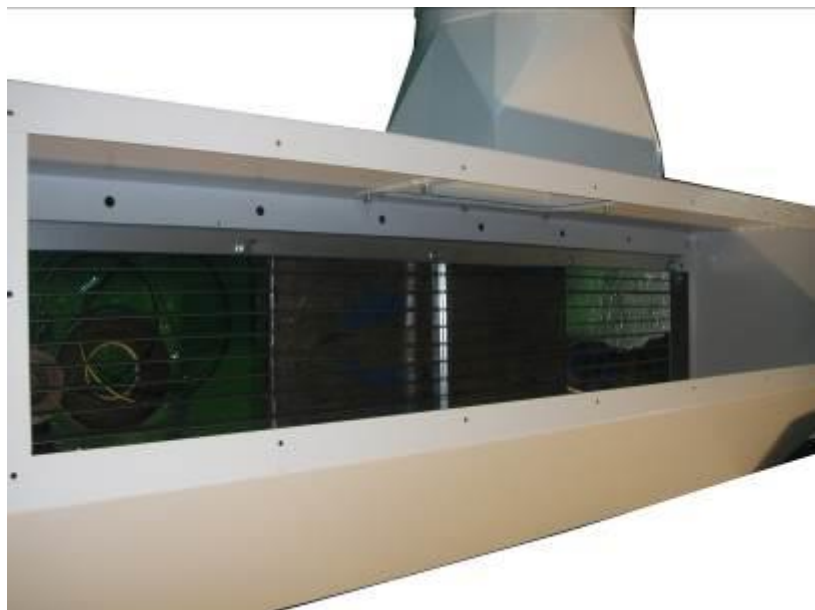
Take out the Hardware number V		
Part name	Description	Q'ty
Hex Screw	1/4" x 3/4"	90
Flat Washer	1/4" x OD19 x 2T	90



✚ Installations for the unit for EB-25x18x12



Loosen the screws



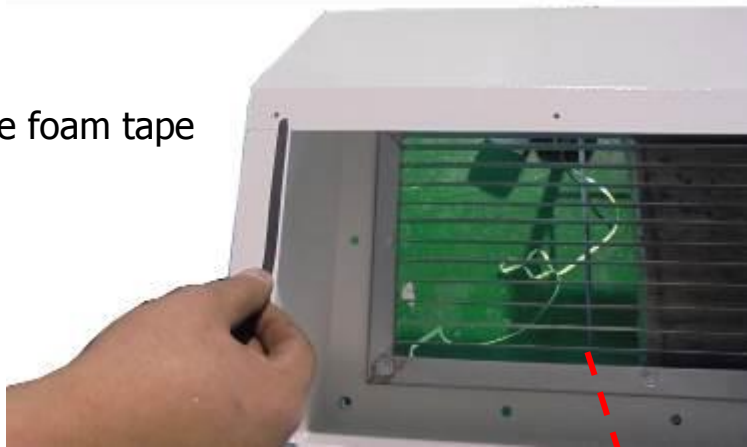
GC to remove First.

Lock **GA** to the **BL1** and **BR1**

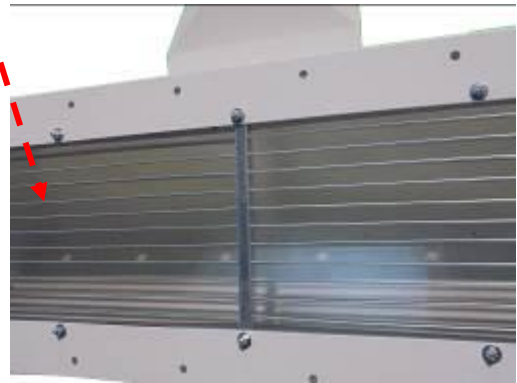


✚ Installations for the unit for EB-25x18x12

Stick the foam tape



90° The result is the best.



Lock the boards back and screw tightly.



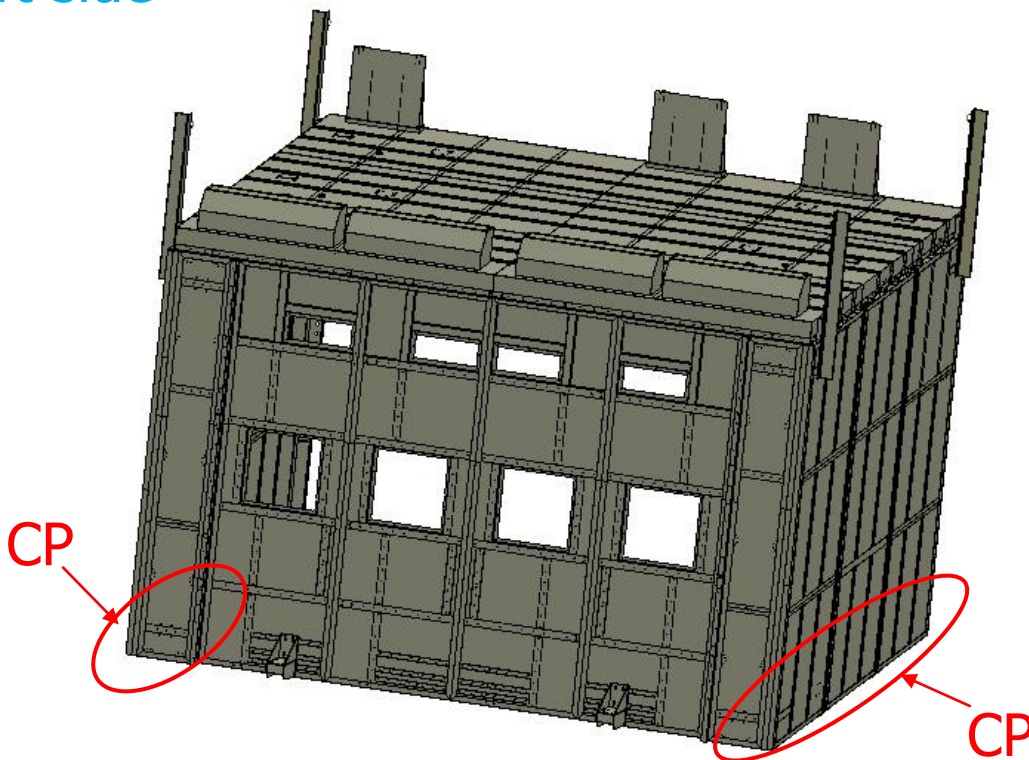
✚ Installations for the unit for EB-25x18x12

- Lock **CP** to the **right side plates NO.1.2.3.4** and **left side plates NO.9.10.11.12** with:

Take out the Hardware number X			
Part name	Description	Q'ty	
Hex Screw	5/16" x 3/4"	24	
Flat Washer	5/16" x OD23 x 2t	24	

Left side

Right side



+ Installations for the unit for EB-25x18x12

In the front

With the right



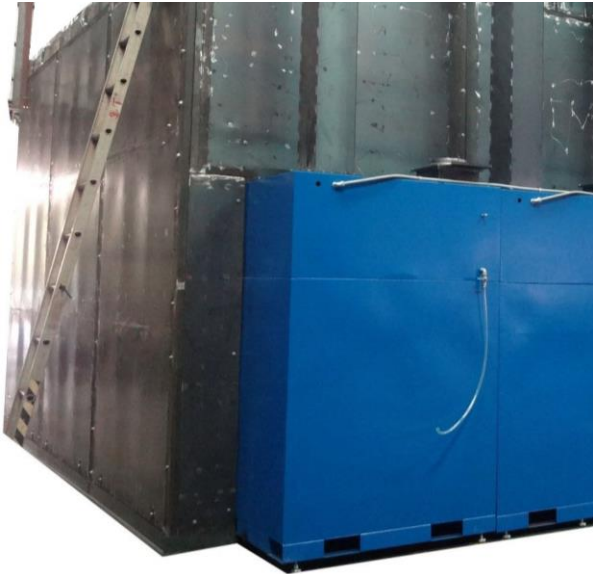
In the front

With the left

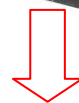


✦ Installations for the unit for EB-25x18x12

At the back



Right side



Left side

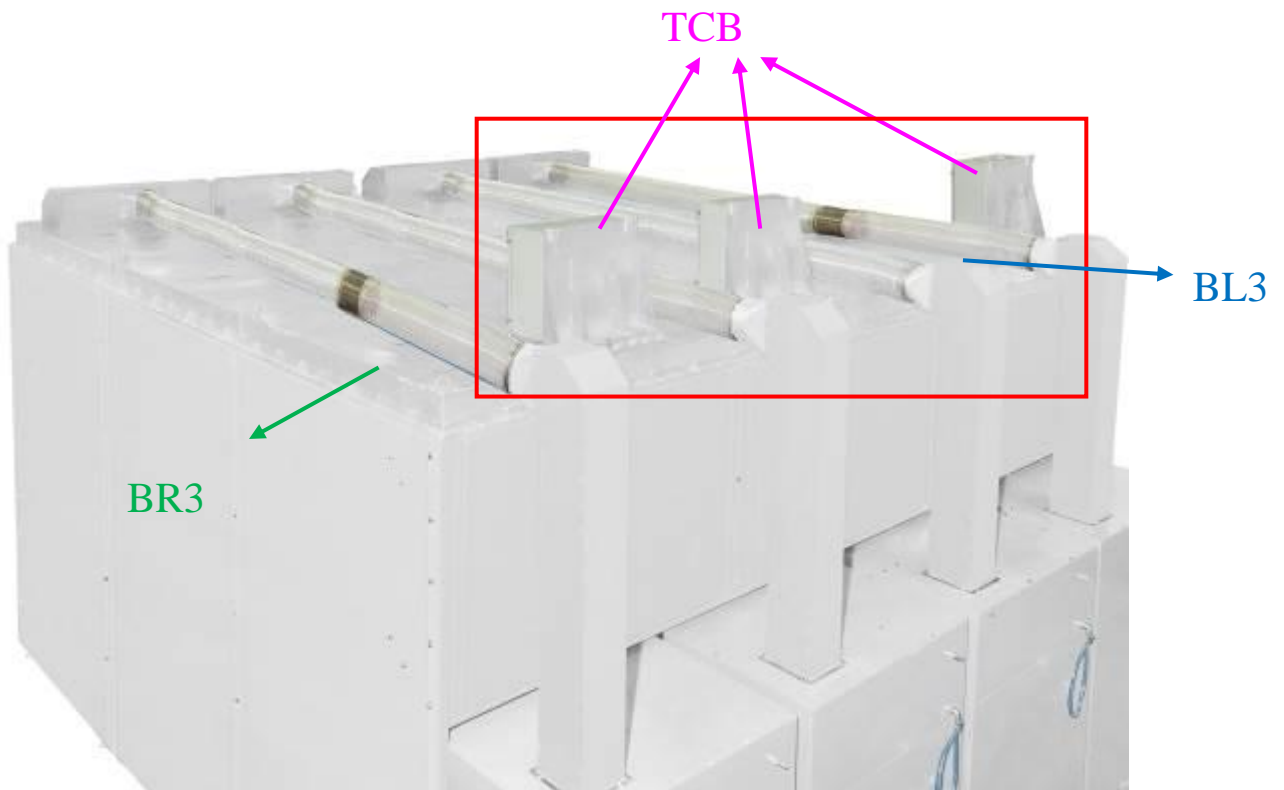
✚ Installations for the unit for EB-25x18x12

- Take out the number:.. **TCB**
- Lock **TCB** to the **BL3** and **BR3** with:

Take out the Hardware number AG		
Part name	Description	Q'ty
Hex Screw	5/16" x 3/4"	24
Flat Washer	5/16" x OD23 x 2T	24

- Lock **Control Box** adjacent to the **TCB** with:

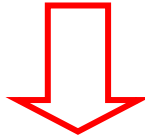
Take out the Hardware number P		
Part name	Description	Q'ty
Hex Screw	1/4" x 3/4"	8
Flat Washer	1/4" x OD13 x 2t	8



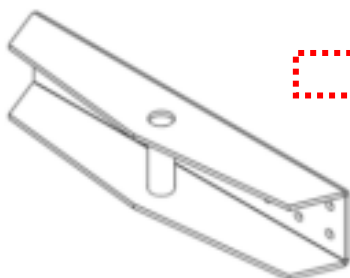
✚ Installations for the unit for EB-25x18x12

- Take out the number: **RBS**
- Lock **RBS** to the **BL1 ~ BL3** with:

Take out the Hardware number AK		
Part name	Description	Q'ty
Hex Screw	3/8" x 1"	60
Flat Washer	3/8" x OD23 x 2T	60



Complete Assembled.



RBS

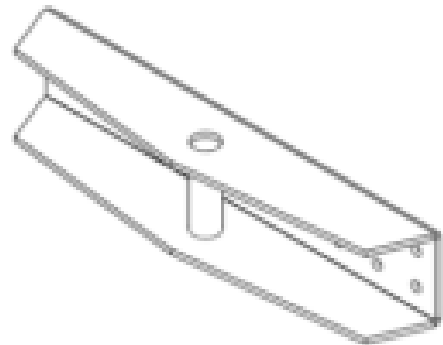


✚ Installations for the unit for EB-25x18x12

- Take out the number: **RBS**
- Lock **RBS** to the **BR1 ~ BR3** with:

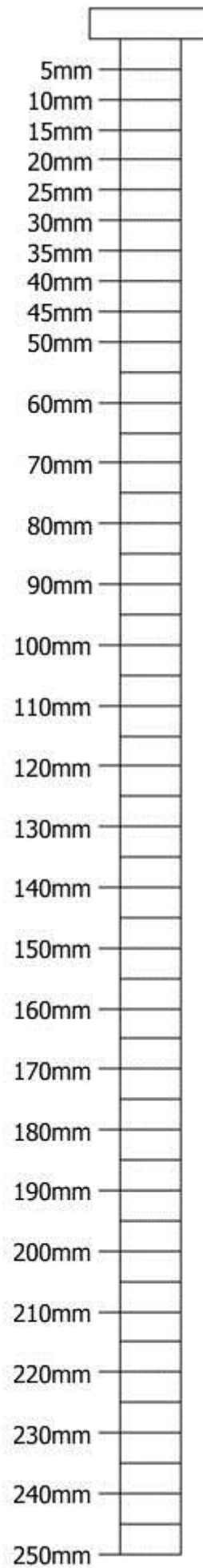
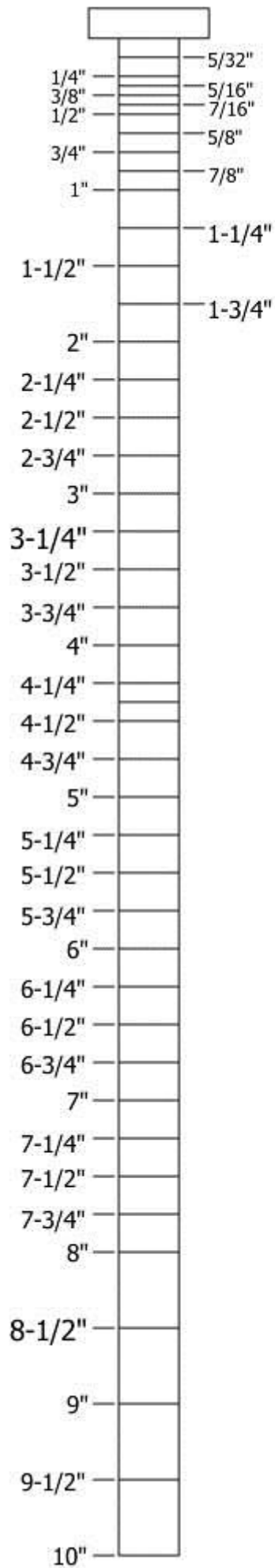
Take out the Hardware number AK		
Part name	Description	Q'ty
Hex Screw	3/8" x 1"	60
Flat Washer	3/8" x OD23 x 2T	60

RBS

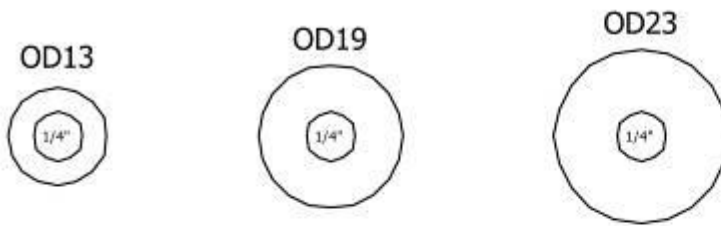


BR1 ~ BR3

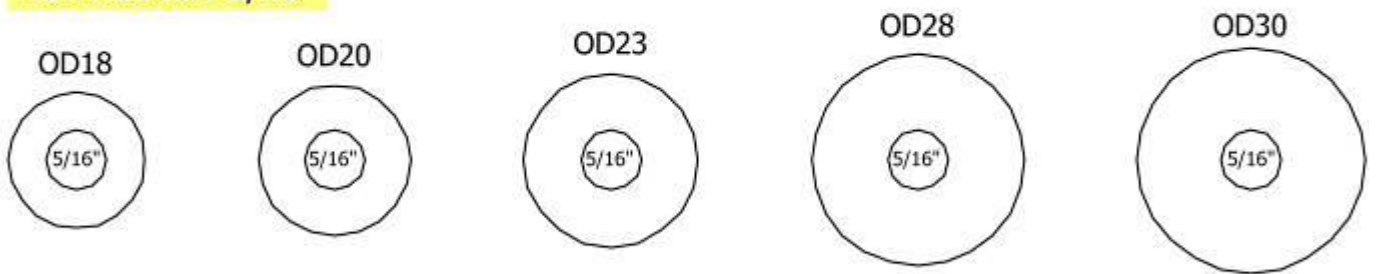




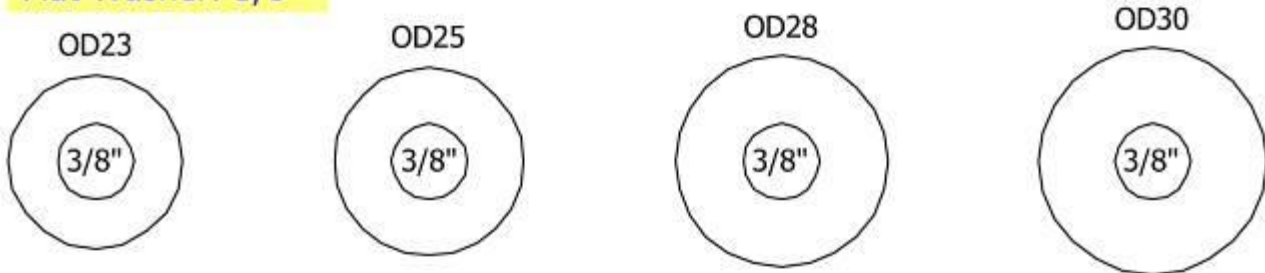
Flat Washer: 1/4"



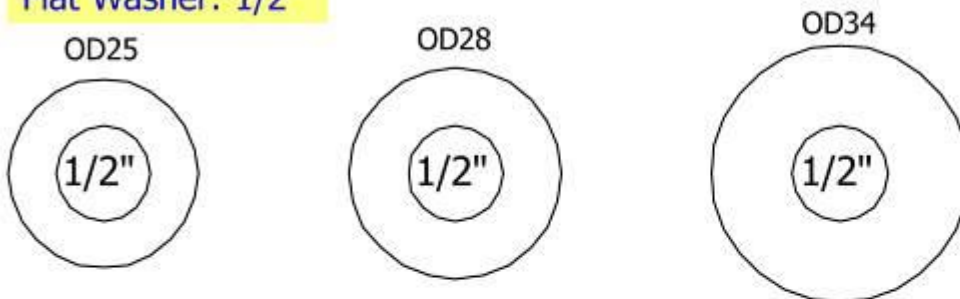
Flat Washer: 5/16"



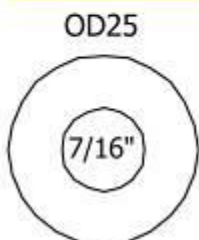
Flat Washer: 3/8"



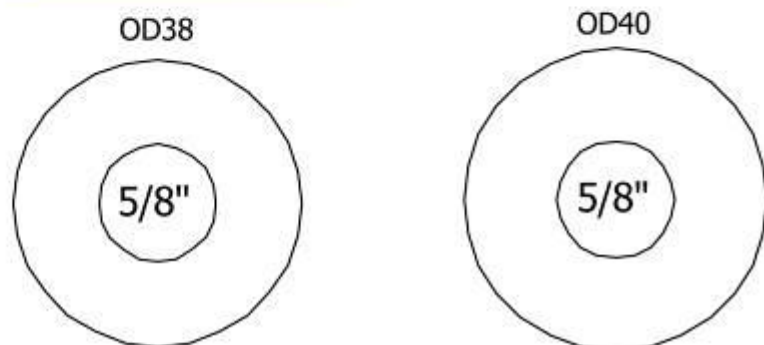
Flat Washer: 1/2"



Flat Washer: 7/16"



Flat Washer: 5/8"



HEX NUT

3/16"



HEX NUT

1/4"



HEX NUT

5/16"



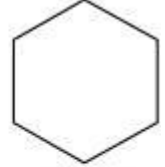
HEX NUT

3/8"



HEX NUT

1/2"



HEX NUT

NYLON HEX NUT

1/4"



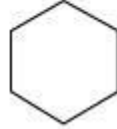
NYLON HEX NUT

5/16"



NYLON HEX NUT

3/8"



NYLON HEX NUT

1/2"



NYLON HEX NUT

