

**✚ Installations for the unit for EB-19x18x12**



## ✚ Installations for the unit for EB-19x18x12

- Take out the number: **2/10/ Triangle form stand**

Lock **Triangle form stand** adjacent to the left side of **02** with:

Take out the Hardware number AF		
Part name	Description	Q'ty
Half-threaded Screw	3/8" x 4"	8
Flat Washer	3/8" x OD23 x 2t	16
Nylon Hex Nut	3/8"	8

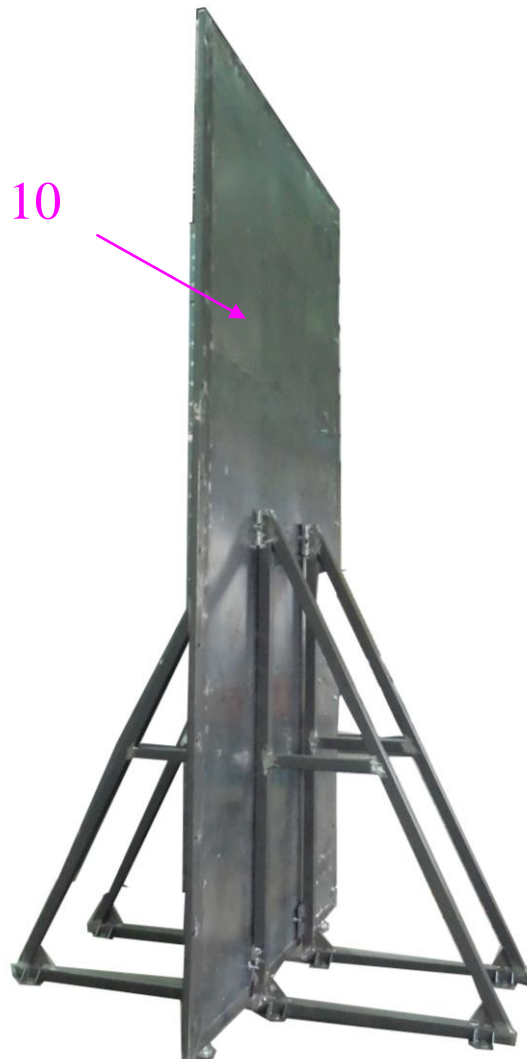


Triangle form stand

## ✦ Installations for the unit for EB-19x18x12

Lock **Triangle form stand** adjacent to the right side of **10** with:

Take out the Hardware number AF		
Part name	Description	Q'ty
Half-threaded Screw	3/8" x 4"	8
Flat Washer	3/8" x OD23 x 2t	16
Nylon Hex Nut	3/8"	8



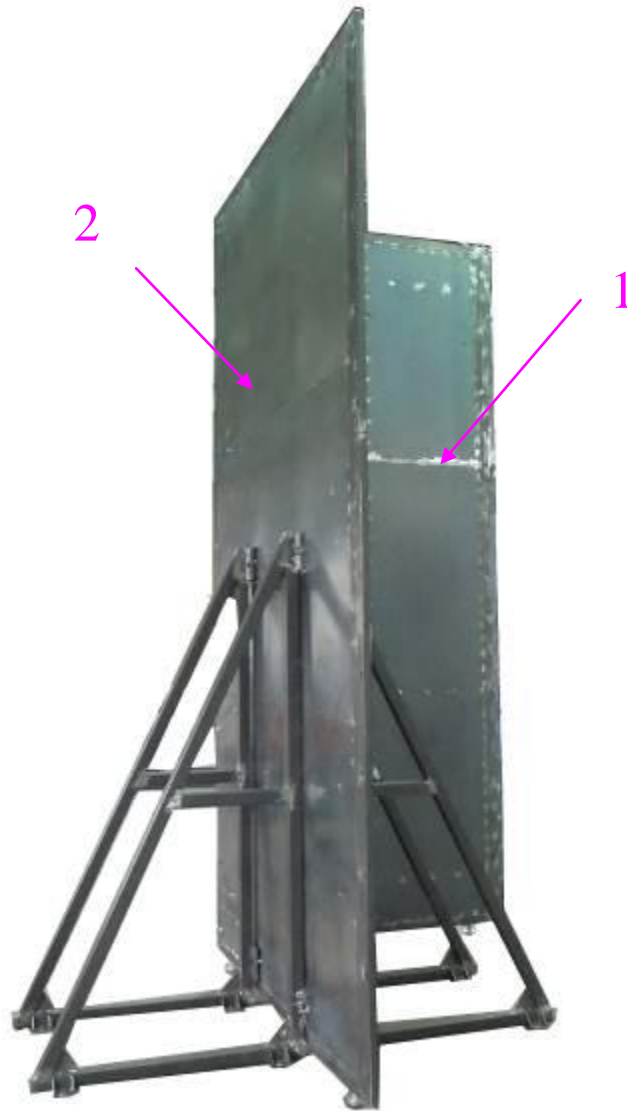
Triangle form stand

## ✚ Installations for the unit for EB-19x18x12

Take out the number: **1**.

- Lock **1** adjacent to the left side of **2** with:

Part name	Description	Q'ty
Half-threaded Screw	3/8" x 5"	12
Flat Washer	3/8" x OD28 x 3t	24
Nylon Hex Nut	3/8"	12



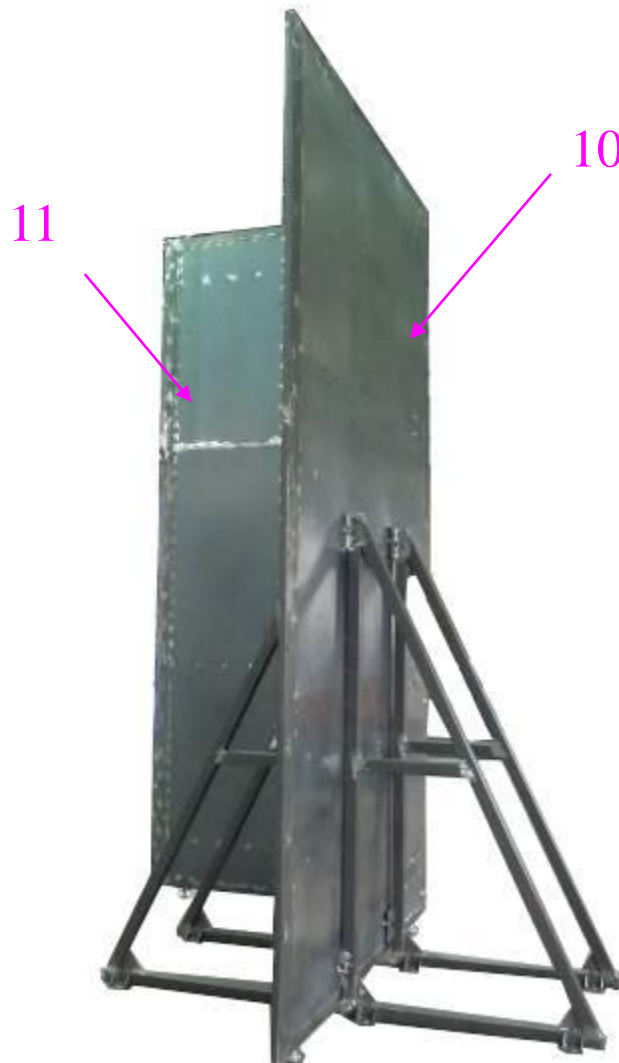
the Right

## ✚ Installations for the unit for EB-19x18x12

- Take out the number: **11**.
- Lock **11** adjacent to the right side of **10** with:

Part name	Description	Q'ty
Half-threaded Screw	3/8" x 5"	12
Flat Washer	3/8" x OD28 x 3t	24
Nylon Hex Nut	3/8"	12

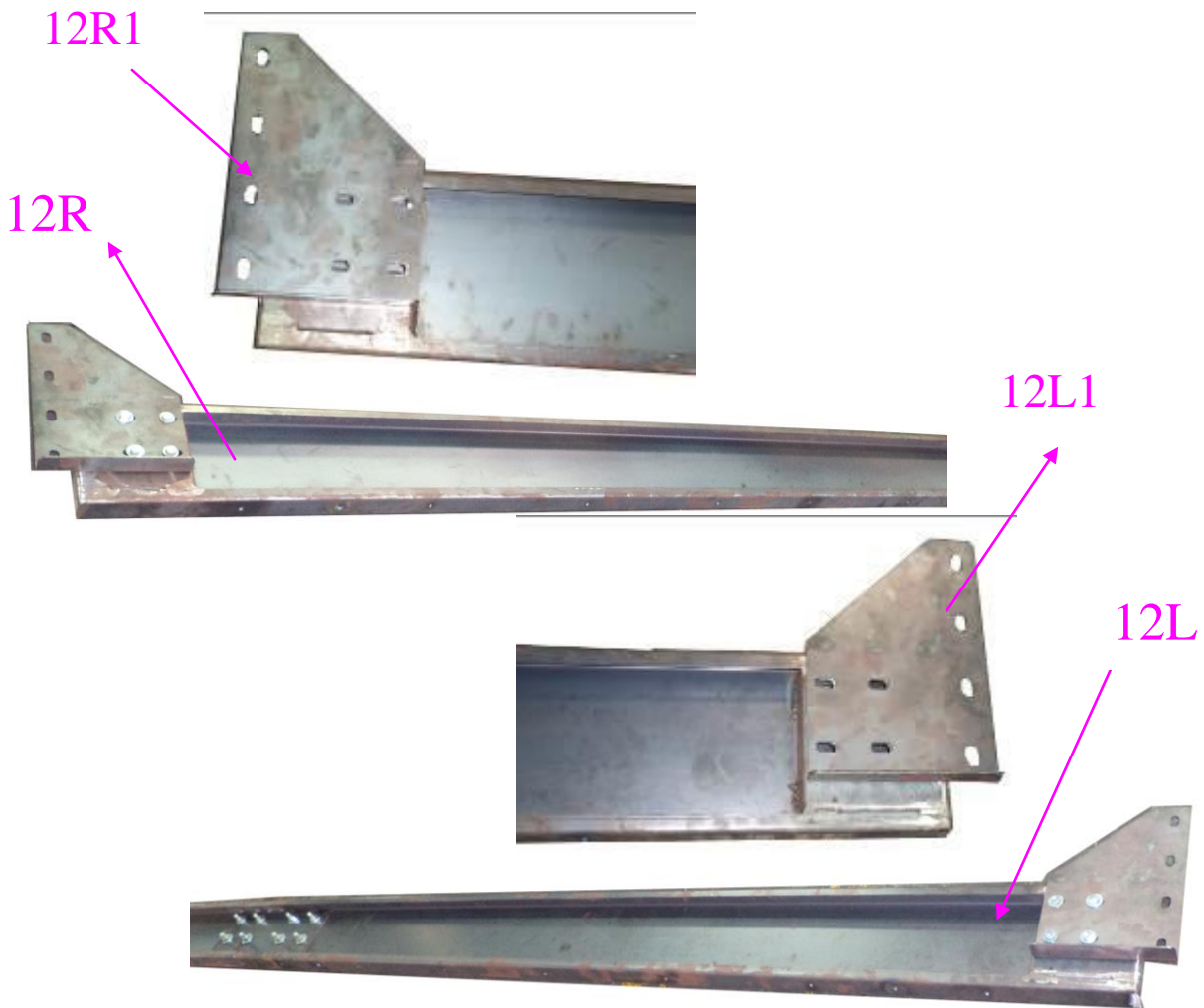
the Left



## ✚ Installations for the unit for EB-19x18x12

- Take out the number: **12L / 12R / 12L1 / 12R1**.
- Lock **12R1** to the **12R** and Lock **12L1** to the **12L** with :

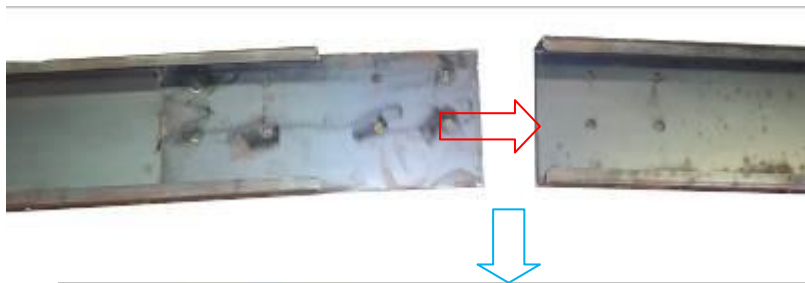
Take out the Hardware number E		
Part name	Description	Q'ty
Hex Screw	3/8" x 1-1/2"	8
Flat Washer	3/8" x OD23 x 2t	8



## ✚ Installations for the unit for EB-19x18x12

- Take out the number: **12L / 12R**.
- Lock **12R** adjacent to the left side of **12L** with:

Take out the Hardware number G		
Part name	Description	Q'ty
Hex Screw	1/2" x 1-1/4"	8
Flat Washer	1/2" x OD28 x 3t	16
Nylon Hex Nut	1/2"	8



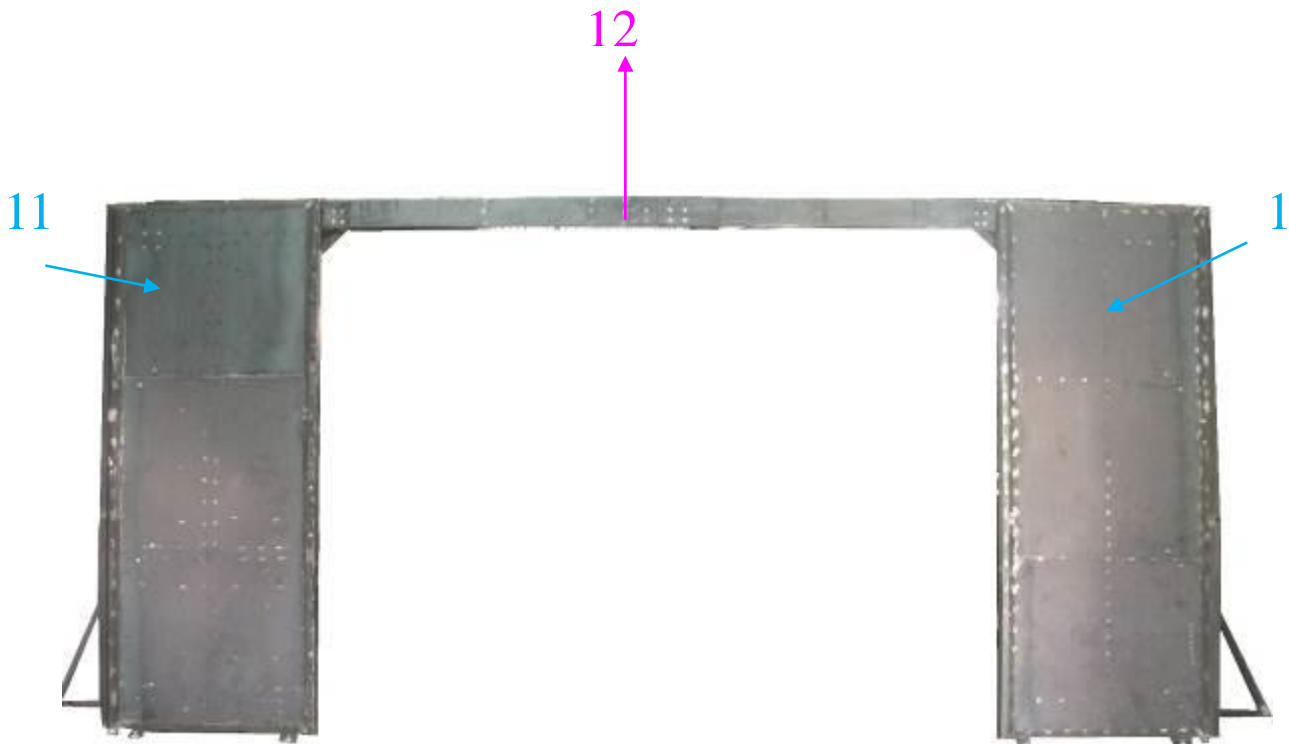
## ✚ Installations for the unit for EB-19x18x12

- Take out the number: **12**
- Lock **12** to the of **11** and **1** with:

Take out the Hardware number E		
Part name	Description	Q'ty
Hex Screw	3/8" x 1-1/2"	8
Flat Washer	3/8" x OD23 x 2t	8

the Left

the Right





## ✚ Installations for the unit for EB-19x18x12

Take out the number: **BL1**

- Lock **BL1** Backdraft of **10 and 11** with:

Part name	Description	Q'ty
Hex Screw	5/16" x 1"	75
Flat Washer	5/16" x OD23 x 2T	75



the Right



BL1

the Left

## ✦ Installations for the unit for EB-19x18x12

Take out the number: **BR1**.

- Lock **BR1** Backdraft of **1 and 2** with:

Take out the Hardware number B		
Part name	Description	Q'ty
Hex Screw	5/16" x 1"	
Flat Washer	5/16" x OD23 x 2T	

- Lock **BL1** adjacent to the right side of **BR1** with:

Take out the Hardware number C		
Part name	Description	Q'ty
Hex Screw	3/8" x 1-1/4"	22
Flat Washer	3/8" x OD23 x 2T	44
Nylon Hex Nut	3/8"	22

the Left

the Right



## ✚ Installations for the unit for EB-19x18x12

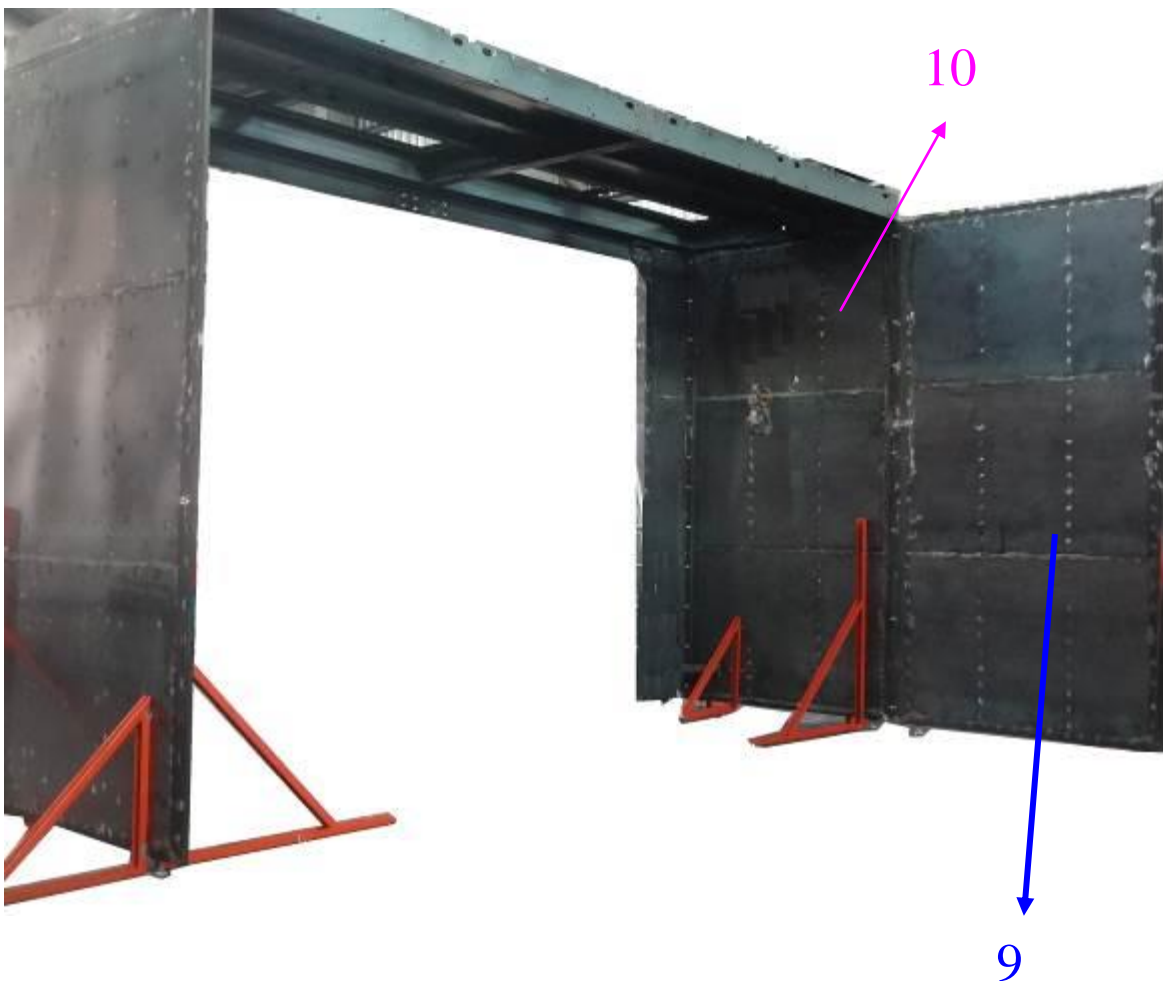
Take out the number: **9**.

- Lock **9** adjacent to the right side of **10** with:

Take out the Hardware number Y		
Part name	Description	Q'ty
Hex Screw	3/8" x 3"	12
Flat Washer	3/8" x OD28 x 2t	24
Nylon Hex Nut	3/8"	12

the Right

the Left



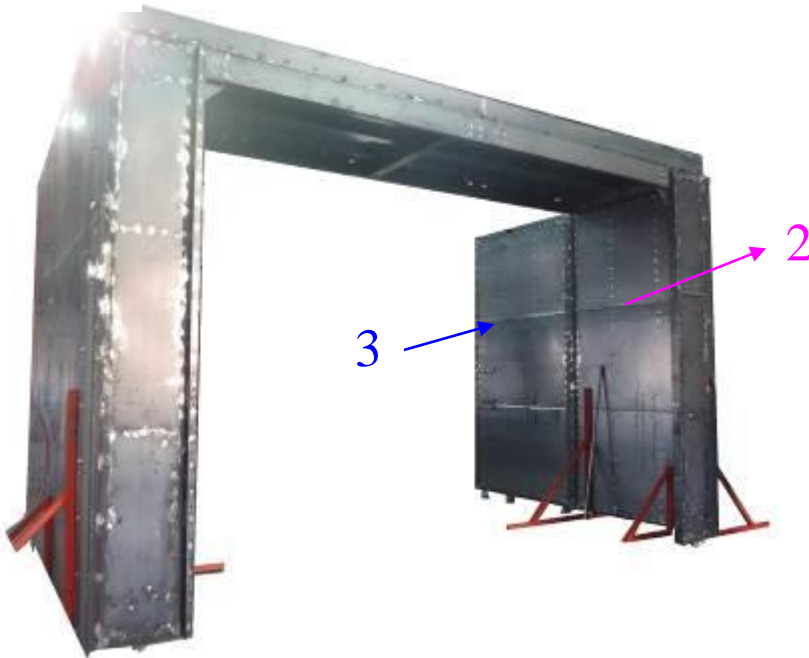
## ✦ Installations for the unit for EB-19x18x12

Take out the number: **2**.

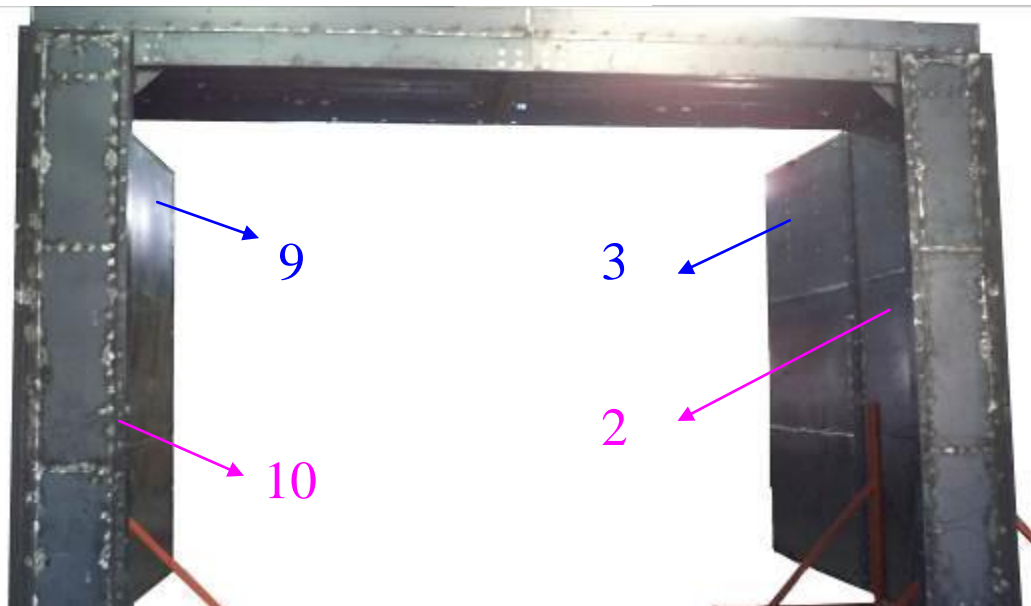
- Lock **2** adjacent to the left side of **3** with:

Take out the Hardware number Y		
Part name	Description	Q'ty
Hex Screw	3/8" x 3"	12
Flat Washer	3/8" x OD28 x 2t	24
Nylon Hex Nut	3/8"	12

the Left



the Right



## ✦ Installations for the unit for EB-19x18x12

- Take out the number: **BL2**.
- Lock **BL2** Backdraft of **BL1** and **9** with:

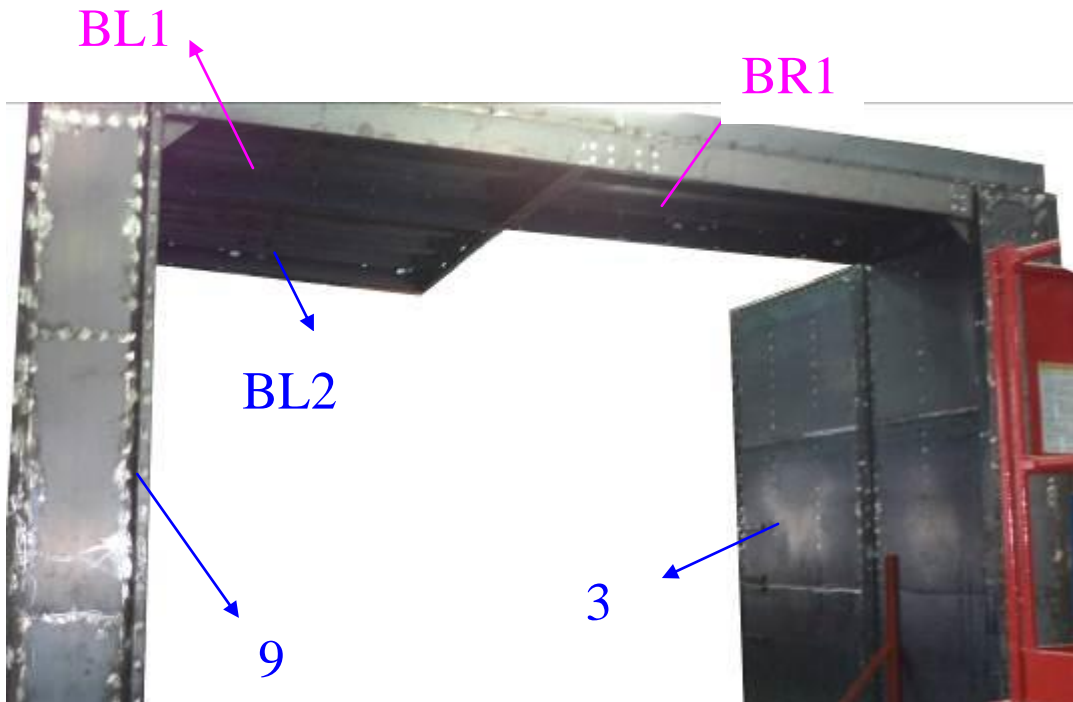
Take out the Hardware number D		
Part name	Description	Q'ty
Hex Screw	3/8" x 1-1/4"	16
Flat Washer	3/8" x OD23 x 2T	32
Nylon Hex Nut	3/8"	16

- Lock **BL2** adjacent to the right side of **9** with:

Take out the Hardware number B		
Part name	Description	Q'ty
Hex Screw	5/16" x 1"	
Flat Washer	5/16" x OD23 x 2T	

the Right

the Left



## ✦ Installations for the unit for EB-19x18x12

- Take out the number: **BR2**.
- Lock **BR2** Backdraft of **BR1** and **BL2** with:

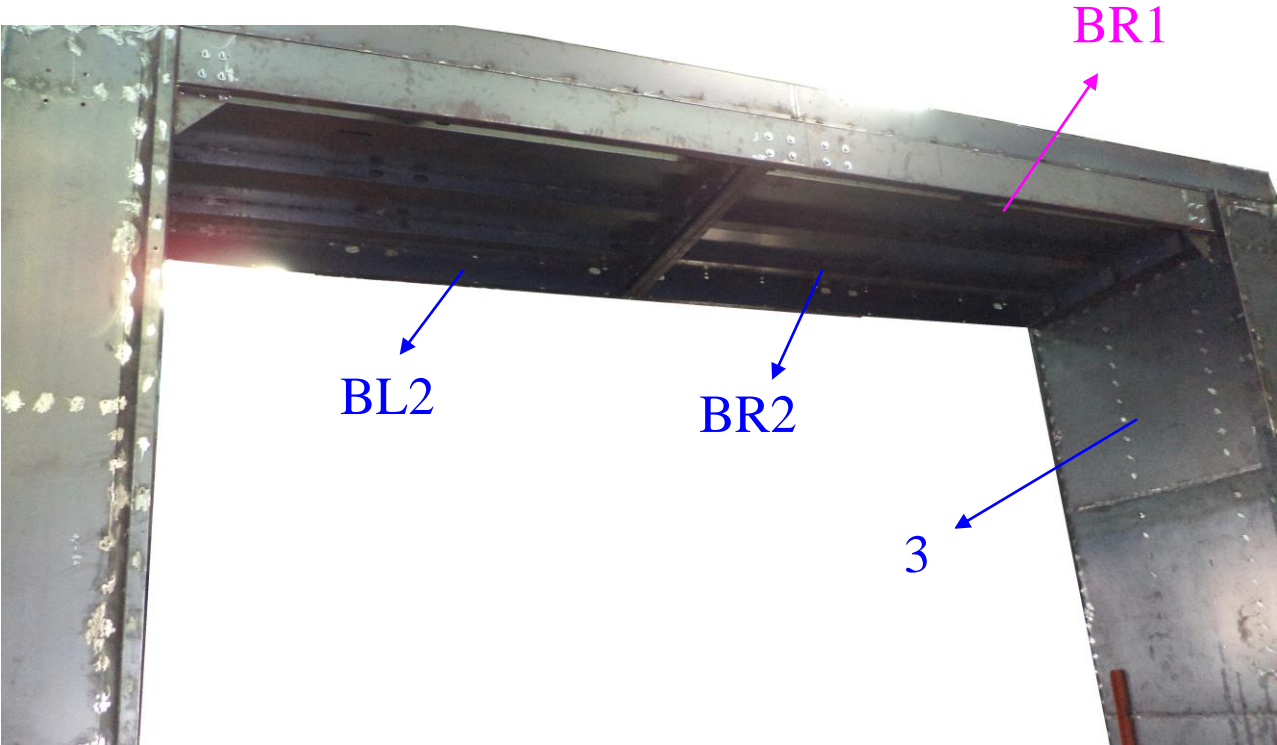
Take out the Hardware number "D" * 1 + "C" * 1		
Part name	Description	Q'ty
Hex Screw	3/8" x 1-1/4"	38
Flat Washer	3/8" x OD23 x 2T	76
Nylon Hex Nut	3/8"	38

- Lock **BR2** adjacent to the right side of **3** with:

Take out the Hardware number B		
Part name	Description	Q'ty
Hex Screw	5/16" x 1"	
Flat Washer	5/16" x OD23 x 2T	

the Right

the Left



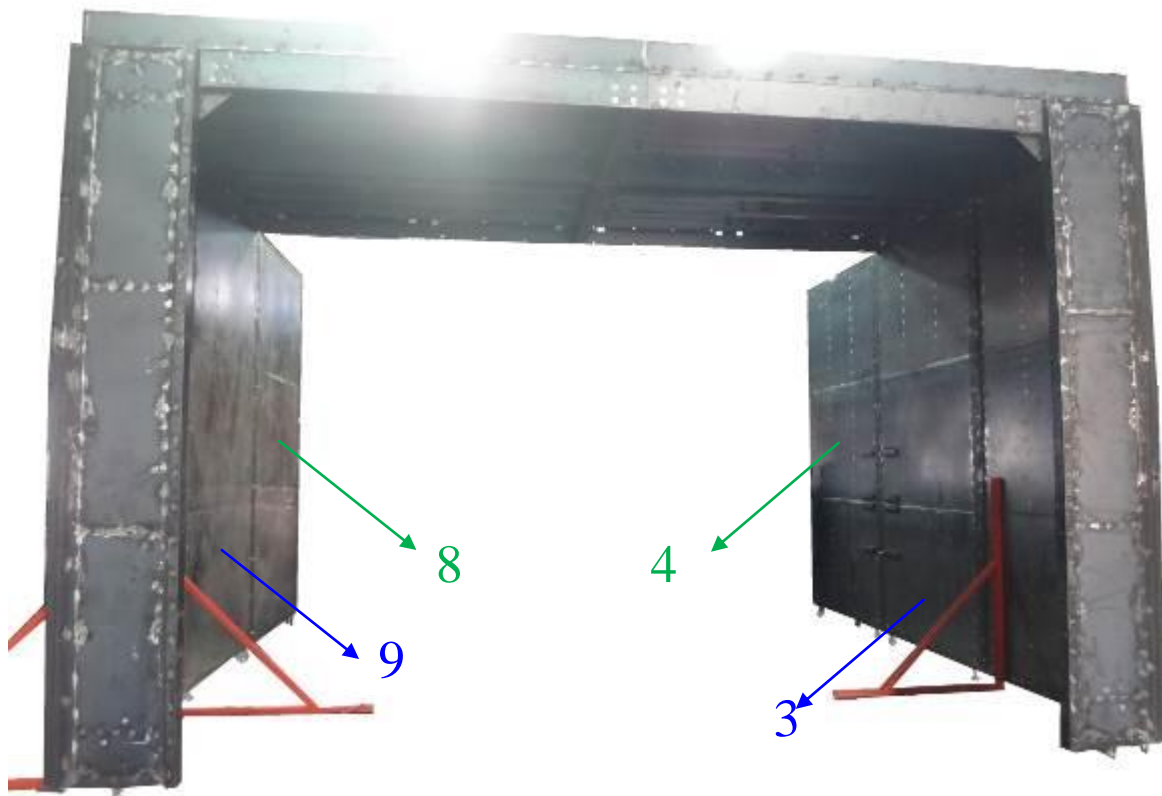
## ✚ Installations for the unit for EB-19x18x12

- Take out the number: **4** and **8**.
- Lock **4** Backdraft of **3** with:
- Lock **8** Backdraft of **9** with:

Take out the Hardware number Y * 2		
Part name	Description	Q'ty
Hex Screw	3/8" x 3"	24
Flat Washer	3/8" x OD28 x 3T	48
Hex Nut	3/8"	24

the Right

the Left



## ✚ Installations for the unit for EB-19x18x12

Take out another number: **SPL / SPR**

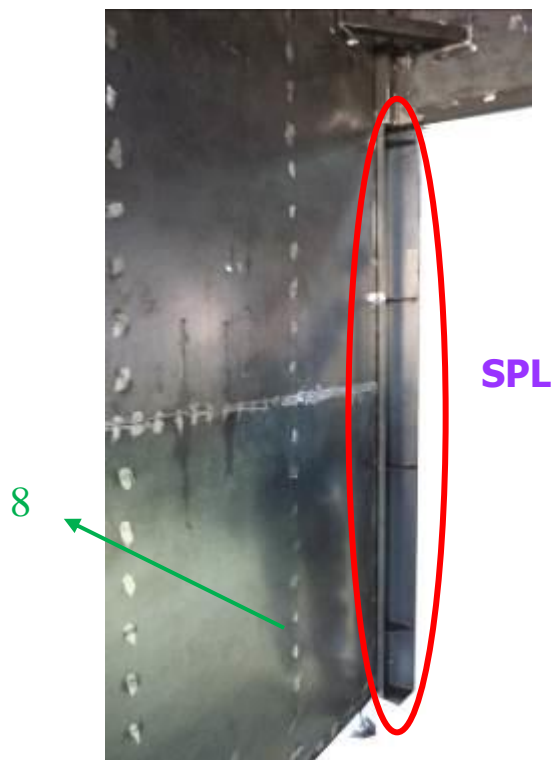
- Lock **SPR** Backdraft of **4** and **Module** with:

Take out the Hardware number AA		
Part name	Description	Q'ty
Hex Screw	3/8" x 3"	7
Flat Washer	3/8" x OD23 x 2T	14
Nylon Hex Nut	3/8"	7

- Lock **SPL** Backdraft of **8** and **Module** with:

Take out the Hardware number AB		
Part name	Description	Q'ty
Hex Screw	3/8" x 3"	7
Flat Washer	3/8" x OD23 x 2T	14
Nylon Hex Nut	3/8"	7

the Left





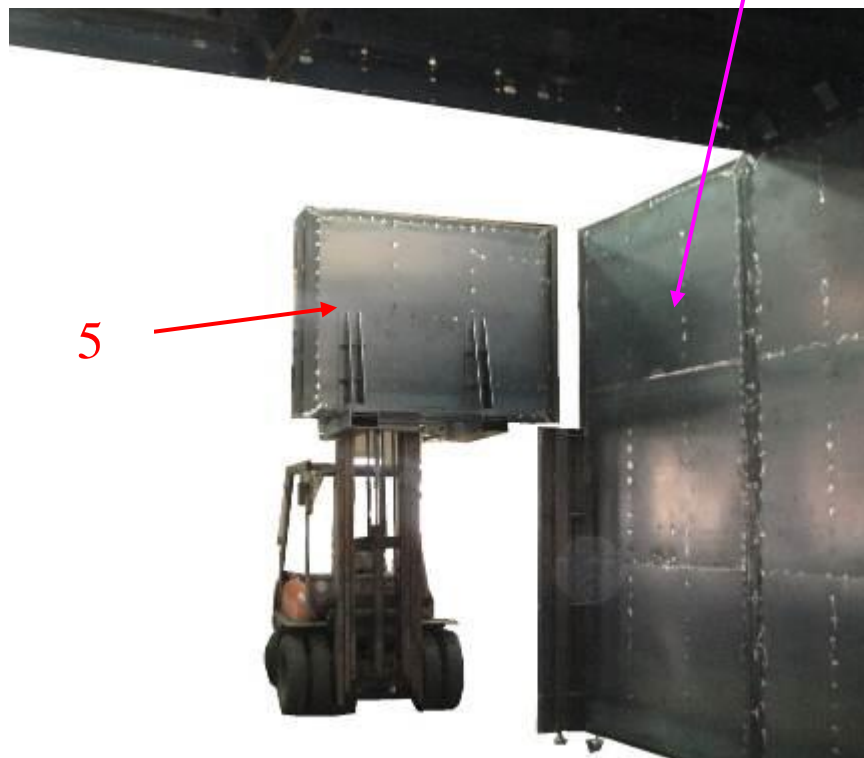
## ✚ Installations for the unit for EB-19x18x12

- Take out another set of number: **5**
- Lock **5** adjacent to **4** with:

Take out the Hardware number Z		
Part name	Description	Q'ty
Half-threaded Screw	1/2" x 5"	5
Flat Washer	1/2" x OD28 x 3t	10
Nylon Hex Nut	1/2"	5



the Right



## ✚ Installations for the unit for EB-19x18x12

- Take out another set of number: **7**
- Lock **7** adjacent to **8** with:

Take out the Hardware number Z		
Part name	Description	Q'ty
Half-threaded Screw	1/2" x 5"	5
Flat Washer	1/2" x OD28 x 3t	10
Nylon Hex Nut	1/2"	5

the Left

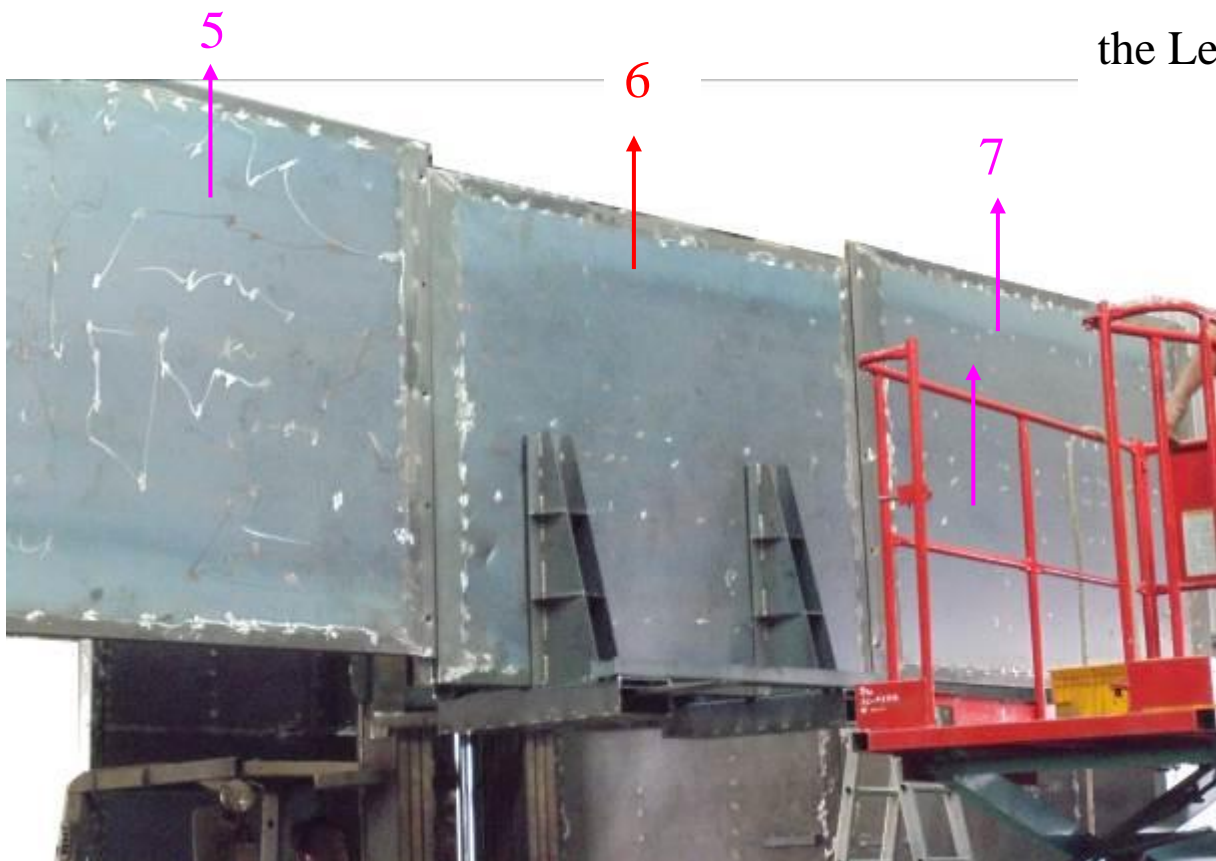


## ✚ Installations for the unit for EB-19x18x12

- Take out another set of number: **6**
- Lock **6** adjacent to **5** with:  
Lock **6** adjacent to **7** with:

Take out the Hardware number AC		
Part name	Description	Q'ty
Hex Screw	1/2" x 3"	10
Flat Washer	1/2" x OD28 x 3t	20
Nylon Hex Nut	1/2"	10

the Right



the Left

## ✚ Installations for the unit for EB-19x18x12

- Take out the number: **BR3. BL3**
- Lock **BL3** Backdraft of **BL2** with:
- Lock **BR3** Backdraft of **BR2** with:

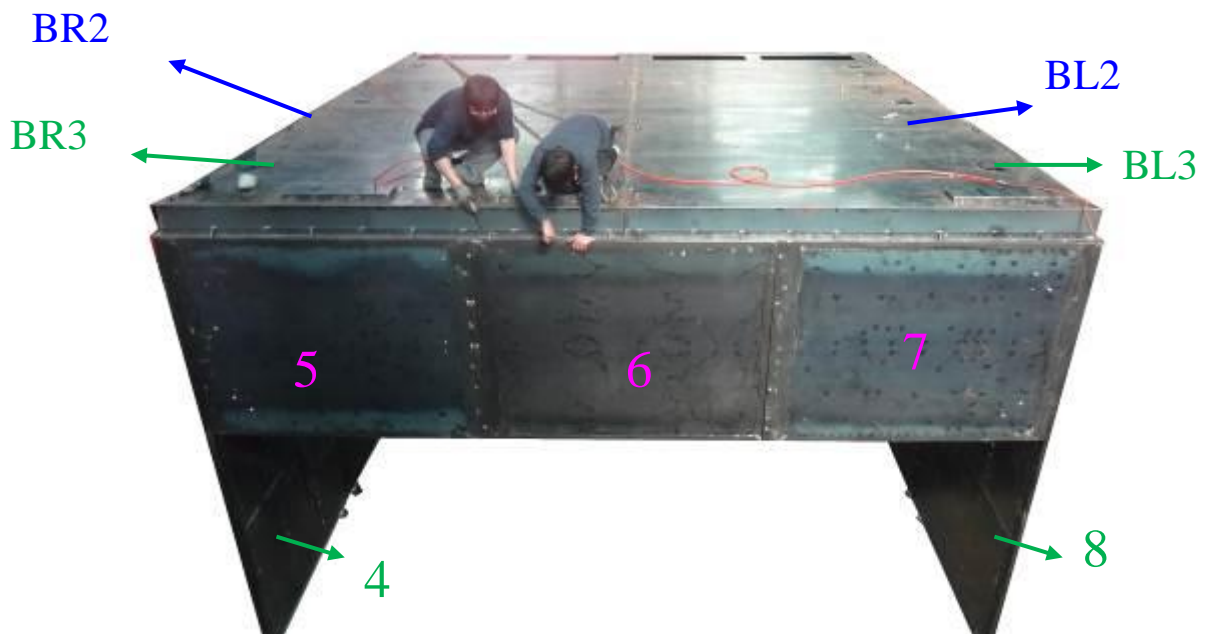
Take out the Hardware number D * 2		
Part name	Description	Q'ty
Hex Screw	3/8" x 1-1/4"	32
Flat Washer	3/8" x OD23 x 2T	64
Nylon Hex Nut	3/8"	32

- Lock **BL3** adjacent to the left side of **7.6** and **8** with:
- Lock **BR3** adjacent to the right side of **5.6** and **4** with:

Take out the Hardware number B		
Part name	Description	Q'ty
Hex Screw	5/16" x 1"	
Flat Washer	5/16" x OD23 x 2T	

the Right

the Left



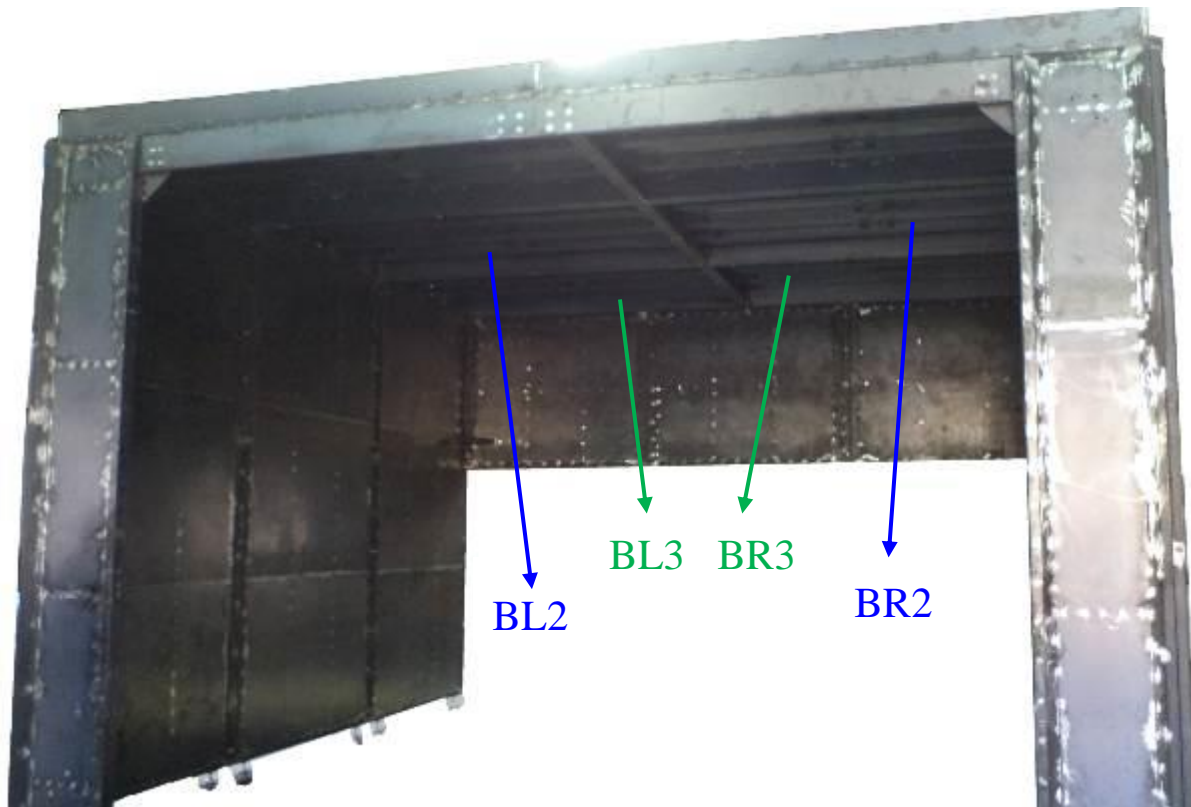
## ✦ Installations for the unit for EB-19x18x12

- Lock **BL3** Backdraft of **BR3** with:

Part name	Description	Q'ty
Hex Screw	3/8" x 1-1/4"	22
Flat Washer	3/8" x OD23 x 2T	44
Nylon Hex Nut	3/8"	22

the Right

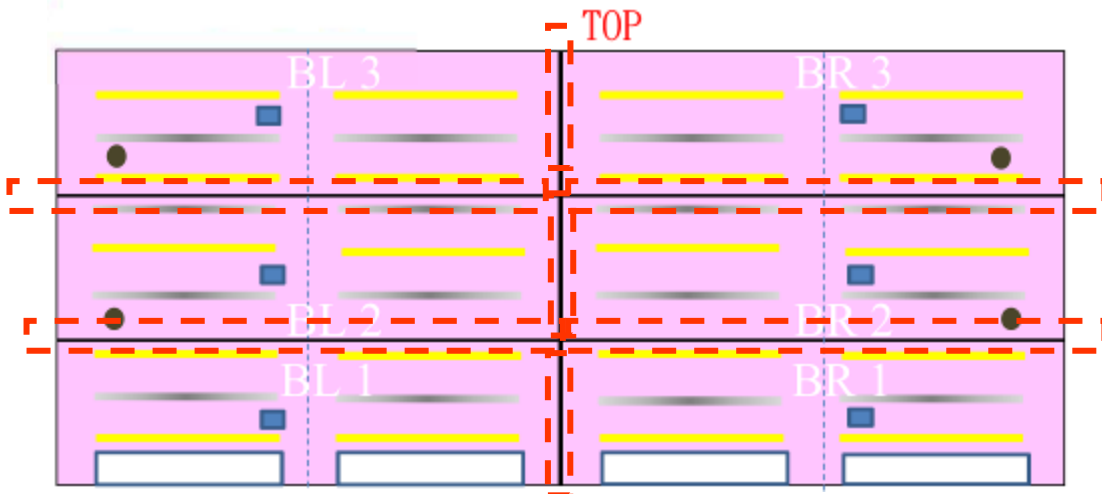
the Left



## ✚ Installations for the unit for EB-19x18x12

- Lock **Cover** for Top Plates Connection Part
  - Lock **BL1** adjacent of **BR1** with:
  - Lock **BL2** adjacent of **BR2** with:
  - Lock **BL3** adjacent of **BR3** with:
  - Lock **BL1** adjacent of **BL2** with:
  - Lock **BL2** adjacent of **BL3** with:
  - Lock **BR1** adjacent of **BR2** with:
  - Lock **BR2** adjacent of **BR3** with:

Take out the Hardware number A		
Part name	Description	Q'ty
Hex Screw	3/8" x 1-1/4"	98
Flat Washer	3/8" x OD23 x 2T	196
Nylon Hex Nut	3/8"	98



## ✚ Installations for the unit for EB-19x18x12

Take out another number: **FB** / **FM**

- Lock **FM** Backdraft of **side panel** and **top panel** with:
- Lock **FB** Backdraft of **Top panel** with:

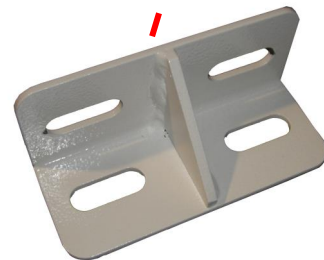
Part name	Description	Q'ty
Hex Screw	5/16" x 1"	24
Flat Washer	5/16" x OD23 x 2T	24



**FM**



**FB**



**FM**

**✦ Installations for the unit for EB-19x18x12**

Right side and  
Left side



**FM**



**FB**



## ✦ Installations for the unit for EB-19x18x12

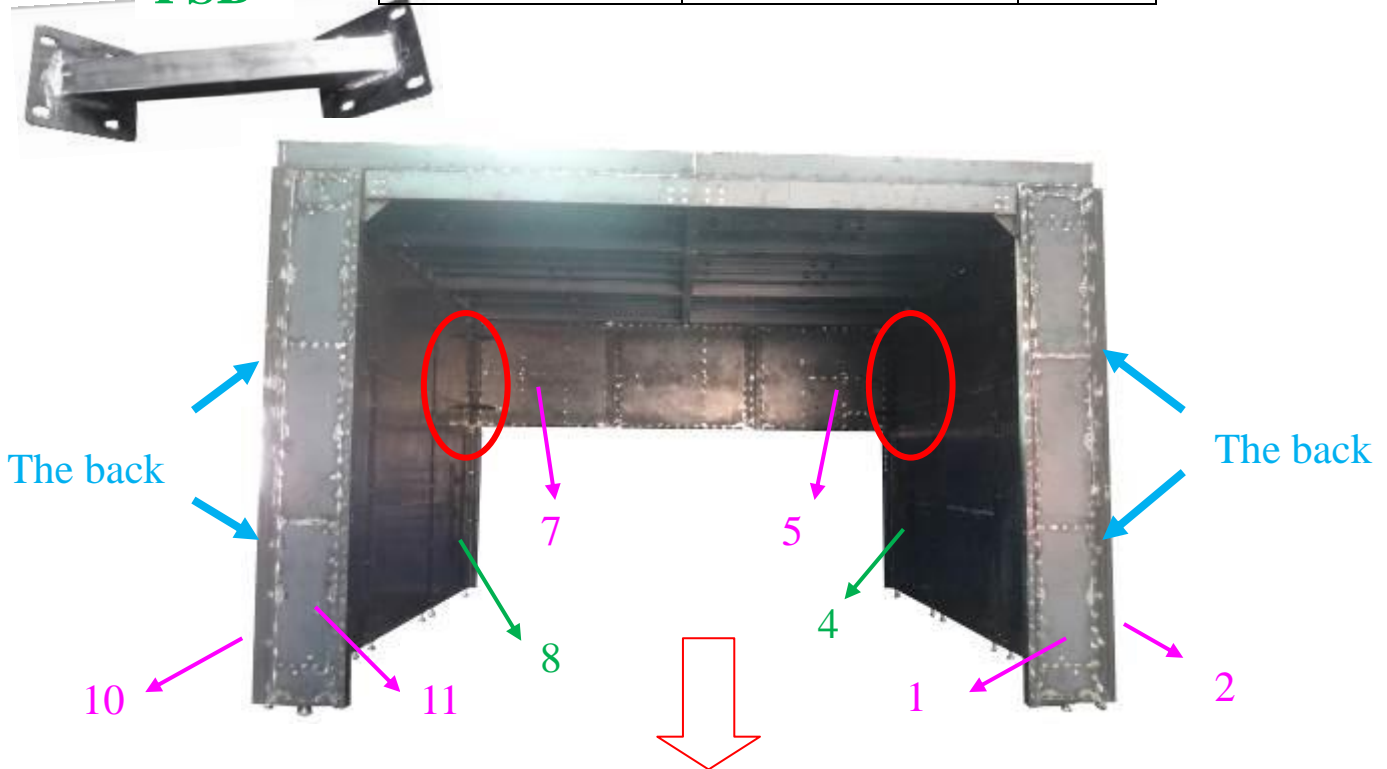
- Lock **PSB** Backdraft of **side NO.1+2** with:
- Lock **PSB** Backdraft of **side NO.4+5** with:
- Lock **PSB** Backdraft of **side NO.7+8** with:
- Lock **PSB** Backdraft of **side NO.10+11** with:

Part name	Description	Q'ty
Hex Screw	3/8" x 4"	64
Flat Washer	3/8" x OD23 x 2T	128
Nylon Hex Nut	3/8"	64

the Left

**PSB**

the Right



**✚ Installations for the unit for EB-19x18x12**

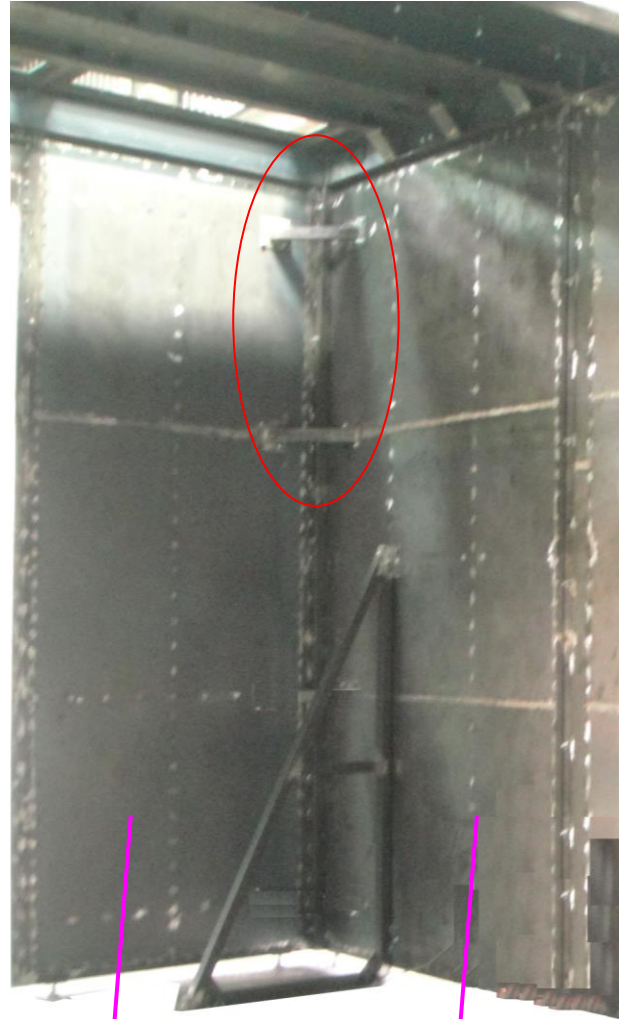
the Right

the Left



2

1

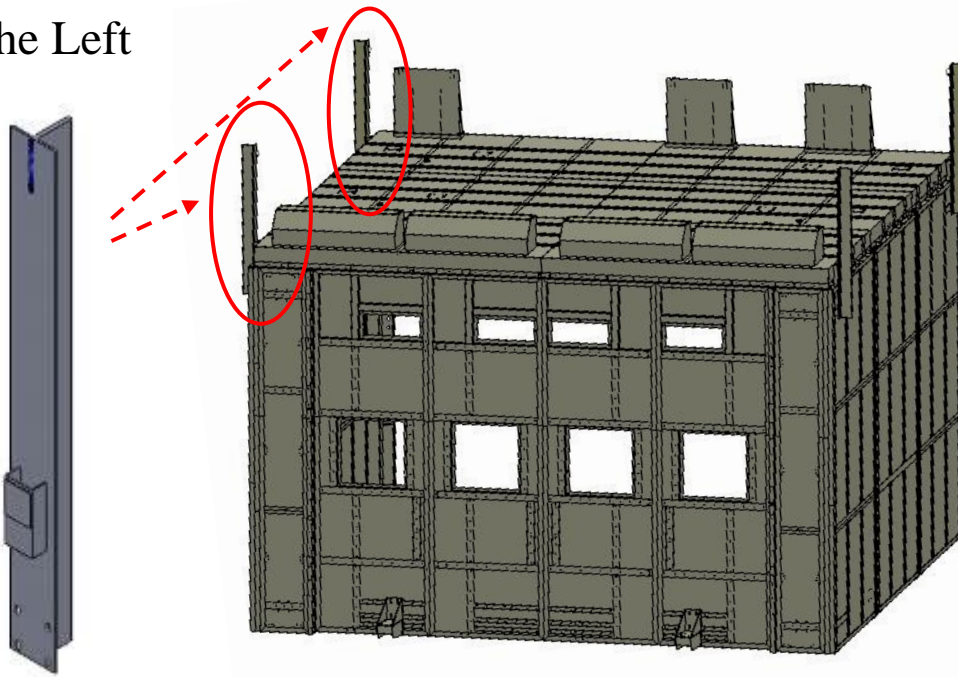


11

10

## ✦ Installations for the unit for EB-19x18x12

the Left

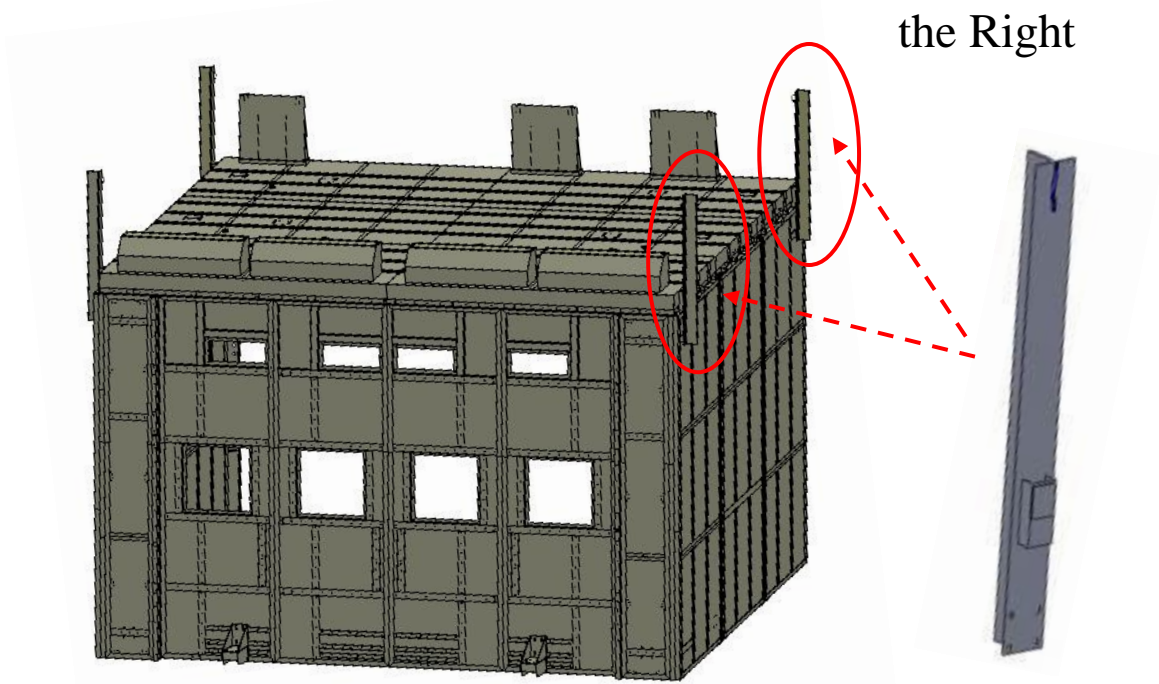


outside



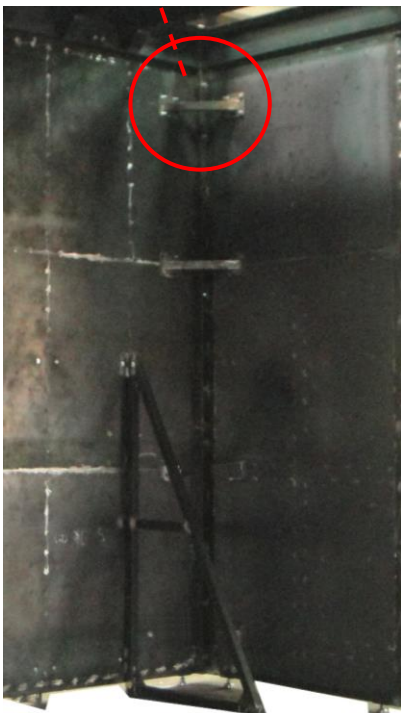
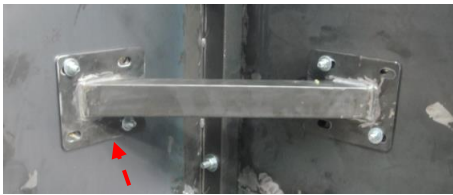
inside

## + Installations for the unit for EB-19x18x12



the Right

outside



inside



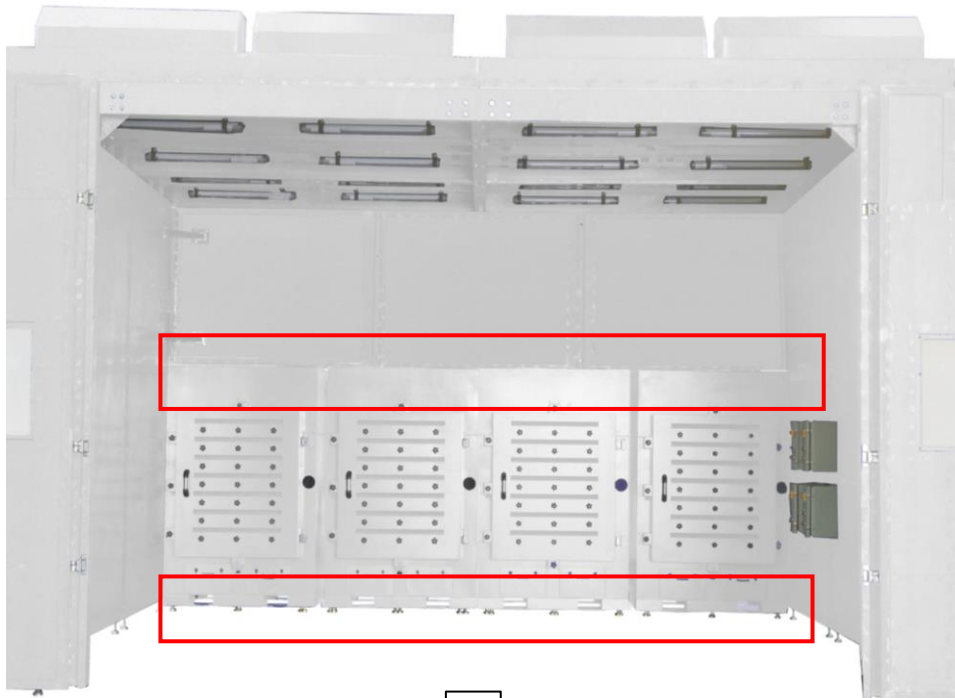
## ✚ Installations for the unit for EB-19x18x12

- Take out another set of number: **FE-2100L-5-4**  
Lock **4 units FE-2100L-5-4** Connection

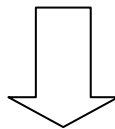
Take out the Hardware number H		
Part name	Description	Q'ty
Hex Screw	3/8" x 2"	24
Flat Washer	3/8" x OD23 x 2t	48
Nylon Hex Nut	3/8"	24

the Left

the Right



the front

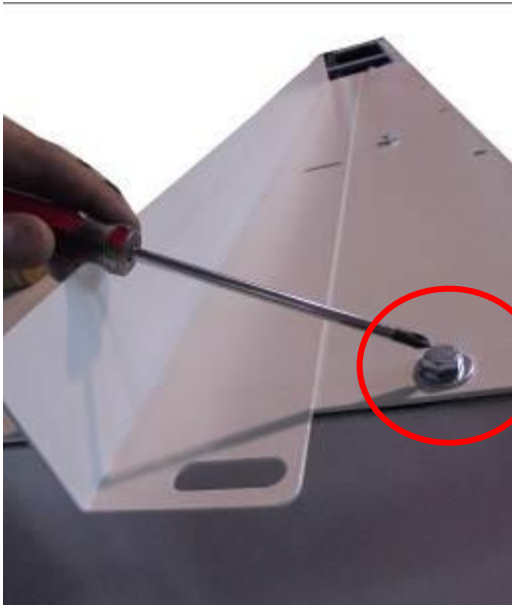


the back

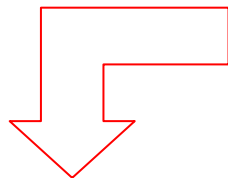
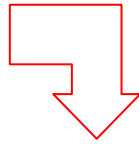


**✦ Installations for the unit for EB-19x18x12.**

**Above the machine**



Loosen the screws



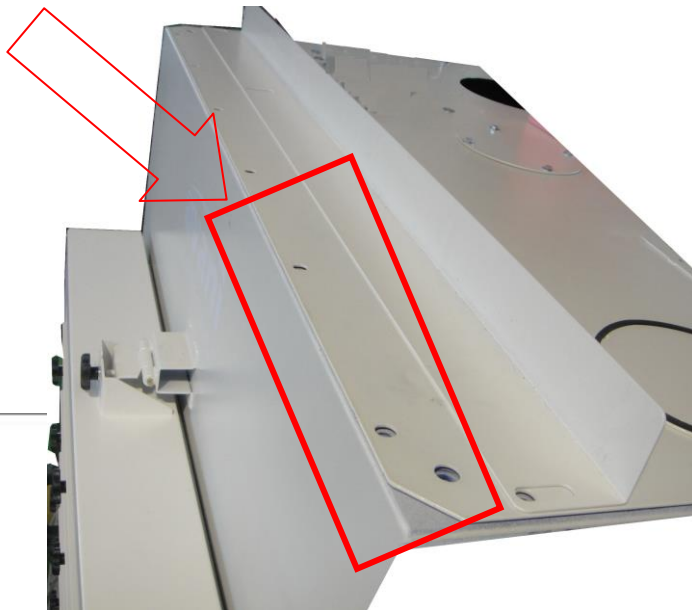
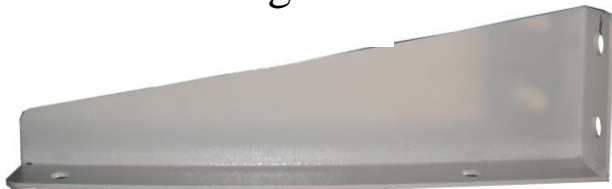
Lock the boards back and screw tightly.

**✚ Installations for the unit for EB-19x18x12.**

the Left



the Right



Loosen the screws



Lock the boards back and screw tightly.

the Left



the Right

## + Installations for the unit for EB-19x18x12.

- Take out the number: **Wheel**



**Complete Assembled.**





## ✚ Installations for the unit for EB-19x18x12.

- Take out the number: **Wheel Caster Left.**

Take out the Hardware number M		
Part name	Description	Q'ty
Half-threaded Screw	3/8" x 3-1/2"	16
Flat Washer	3/8" x OD28 x 3t	32
Nylon Hex Nut	3/8"	16

- Take out the number: **Wheel Caster Right.**

Take out the Hardware number N		
Part name	Description	Q'ty
Half-threaded Screw	3/8" x 3-1/2"	16
Flat Washer	3/8" x OD28 x 3t	32
Nylon Hex Nut	3/8"	16



## ✚ Installations for the unit for EB-19x18x12

Take out another set of number: **DR1** / **DL1**

the Left

the Right

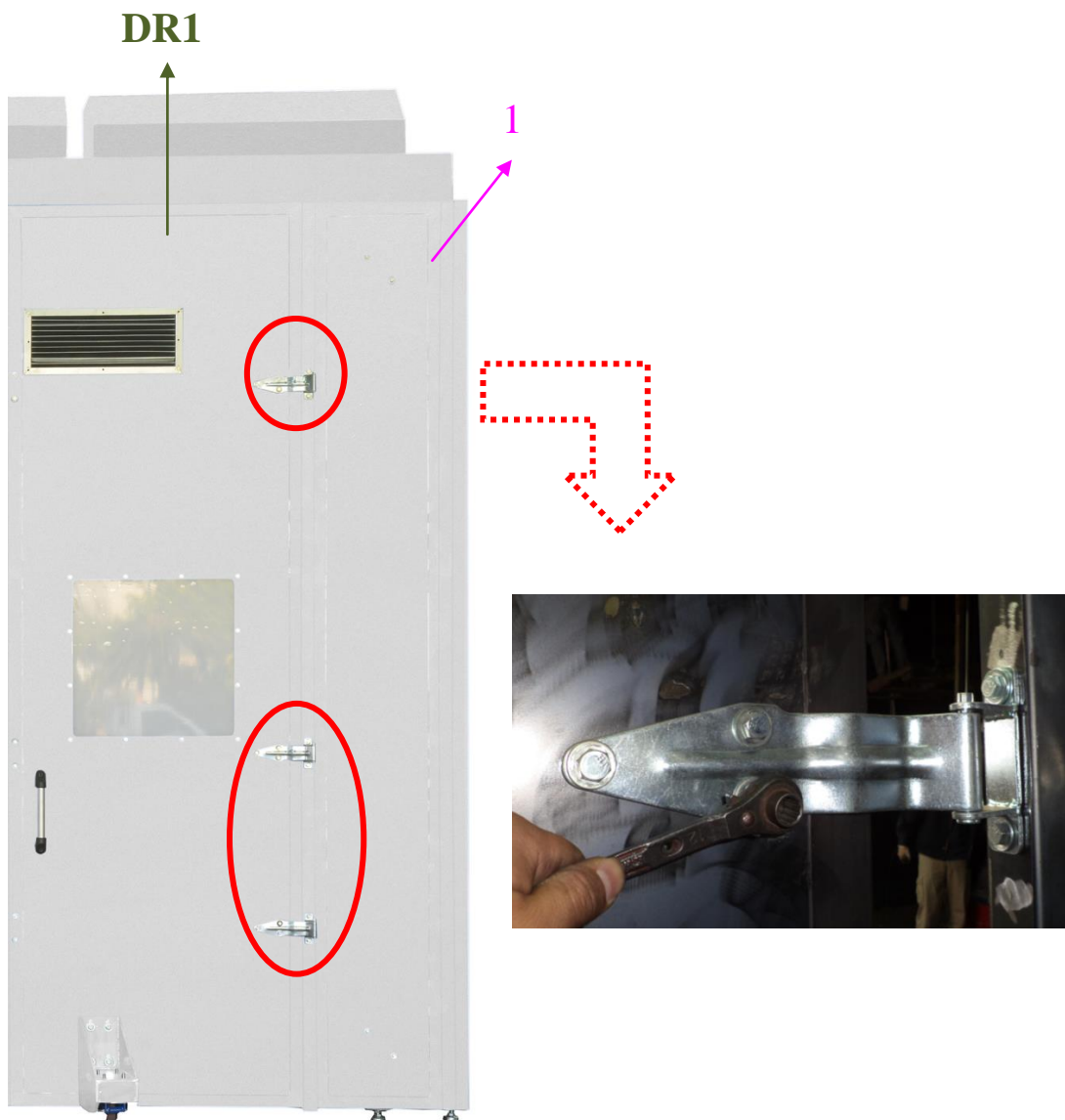


## ✚ Installations for the unit for EB-19x18x12

Lock **DR1** Backdraft of **1** with:

Take out the Hardware number I		
Part name	Description	Q'ty
Hex Screw	3/8" x 1"	15
Flat Washer	3/8" x OD23 x 2t	15

the Right

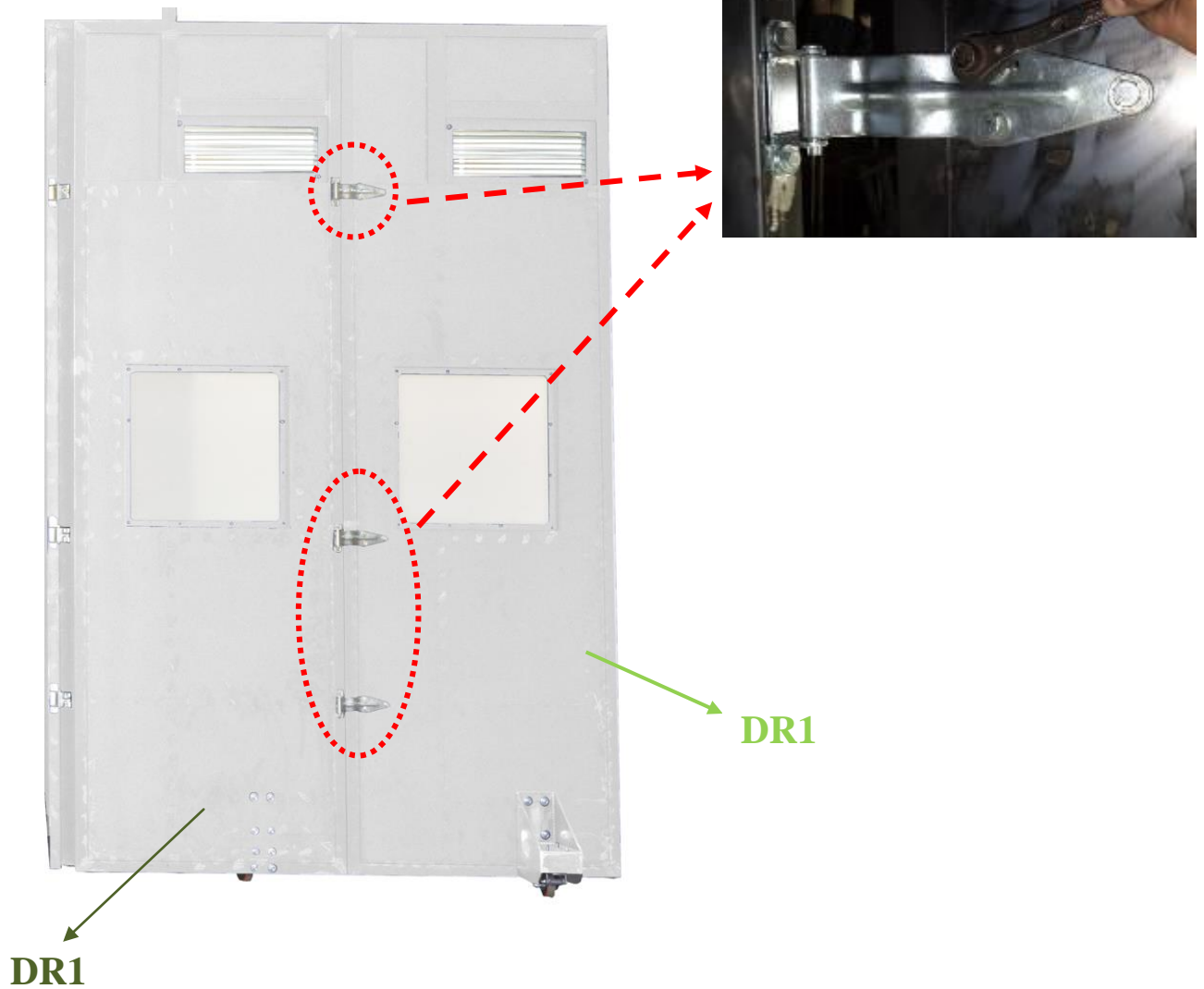


## ✚ Installations for the unit for EB-19x18x12

Lock **DR1** Backdraft of **DR1** with:

Take out the Hardware number L		
Part name	Description	Q'ty
Hex Screw	3/8" x 1"	6
Flat Washer	3/8" x OD23 x 2t	6
Hex Screw	3/8" x 3"	9
Flat Washer	3/8" x OD23 x 2t	18
Nylon Hex Nut	3/8"	9

the Right



## ✚ Installations for the unit for EB-19x18x12

Lock **DL1** Backdraft of **11** with:

Take out the Hardware number J		
Part name	Description	Q'ty
Hex Screw	3/8" x 1"	15
Flat Washer	3/8" x OD23 x 2t	15

the Left

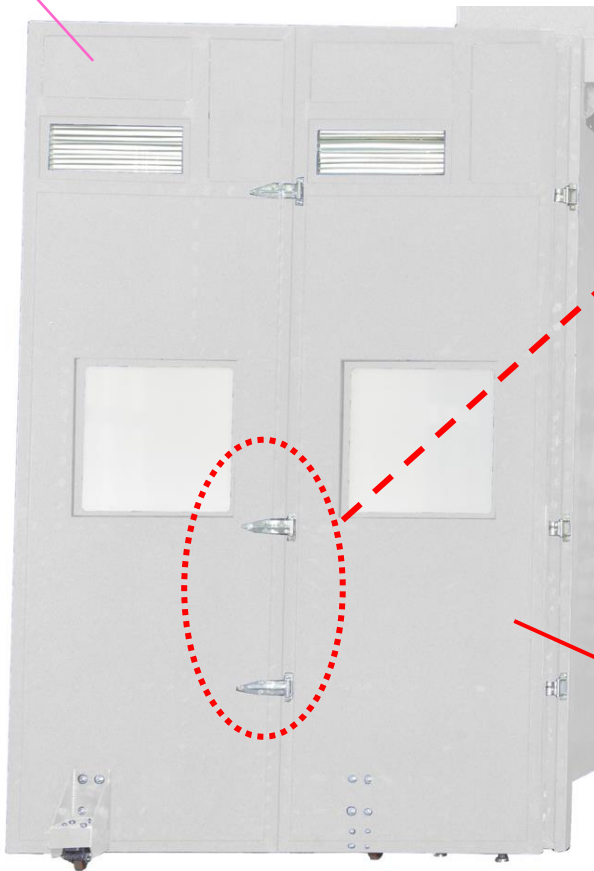


## ✦ Installations for the unit for EB-19x18x12

Take out the Hardware number K		
Part name	Description	Q'ty
Hex Screw	3/8" x 1"	6
Flat Washer	3/8" x OD23 x 2t	6
Hex Screw	3/8" x 3"	9
Flat Washer	3/8" x OD23 x 2t	18
Hex Nut	3/8"	9

the Left

DL1



DL1

## ✚ Installations for the unit for EB-19x18x12.

- Take out the number: **Acrylic Sheet**.
- Lock **Acrylic Sheet** to the **DR1 / DL1** with:

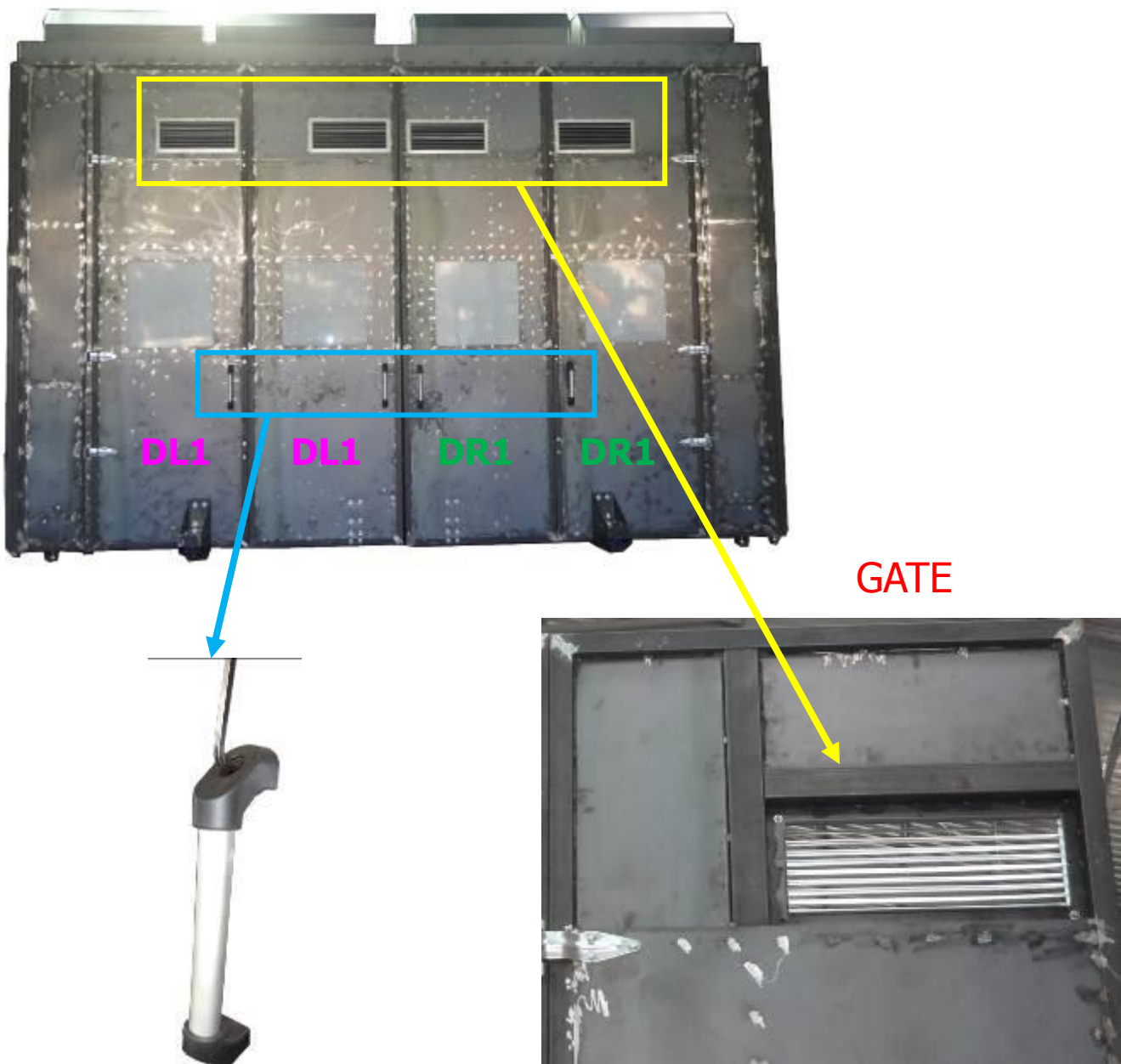
Take out the Hardware number Q		
Part name	Description	Q'ty
Hex Screw	1/4" x 1-1/4"	48
Flat Washer	1/4" x OD19 x 2t	96
Hex Nut	1/4"	48



## ✚ Installations for the unit for EB-19x18x12.

- Take out the number: **GATE**.
- Lock **GATE** to the **DR1** / **DL1** with:

Take out the Hardware number R		
Part name	Description	Q'ty
Hex Screw	1/4" x 1-1/4"	32
Flat Washer	1/4" x OD19 x 2t	64
Hex Nut	1/4"	32

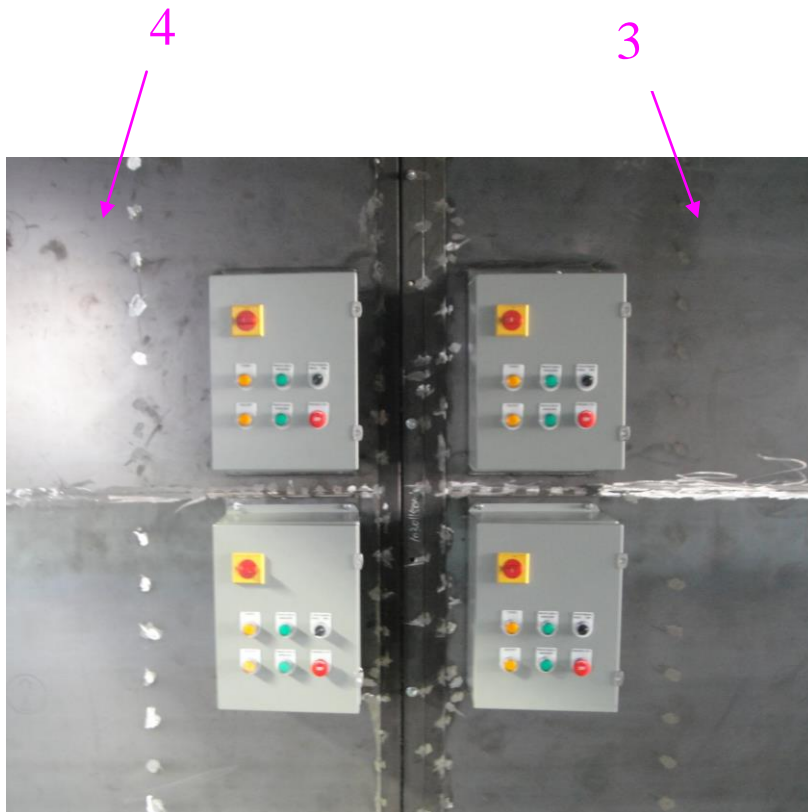




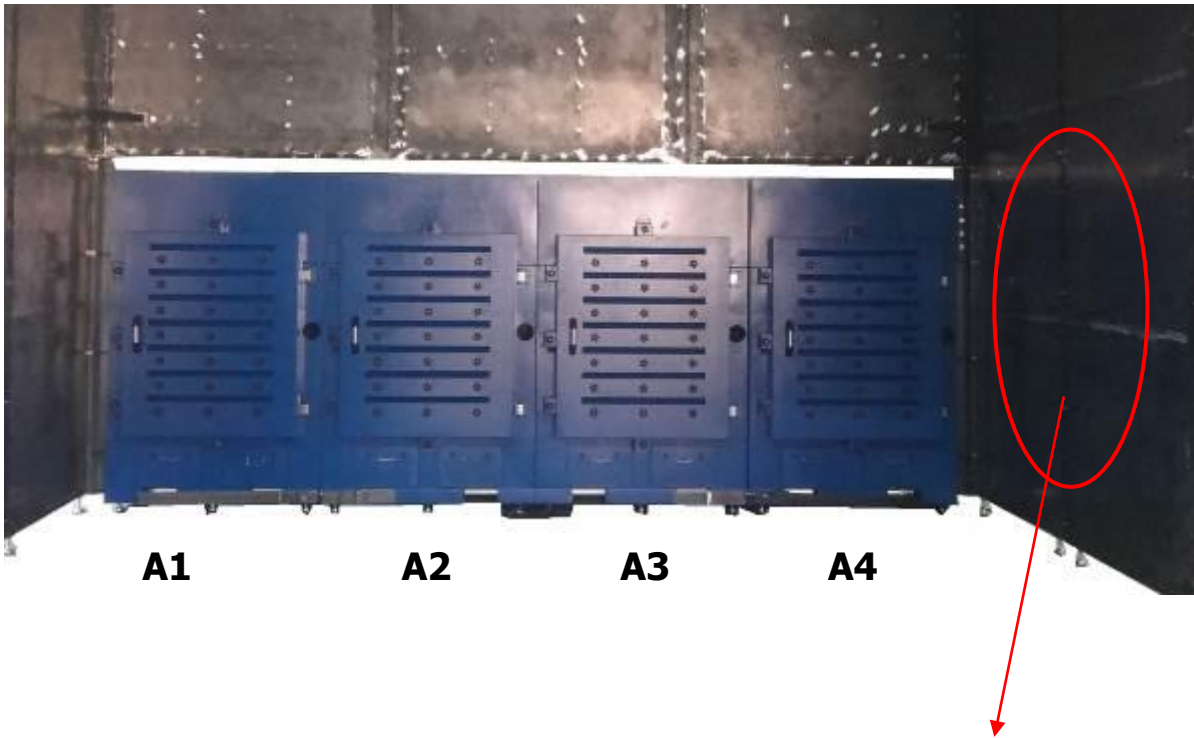
## ✚ Installations for the unit for EB-19x18x12.

- Take out the number: **Control Box**
- Lock **Control Box** adjacent to the **3** and **4** with:

Take out the Hardware number P		
Part name	Description	Q'ty
Hex Screw	1/4" x 3/4"	16
Flat Washer	1/4" x OD13 x 2t	16



**✚ Installations for the unit for EB-19x18x12.**



**EB-L-5-4 Control Box**



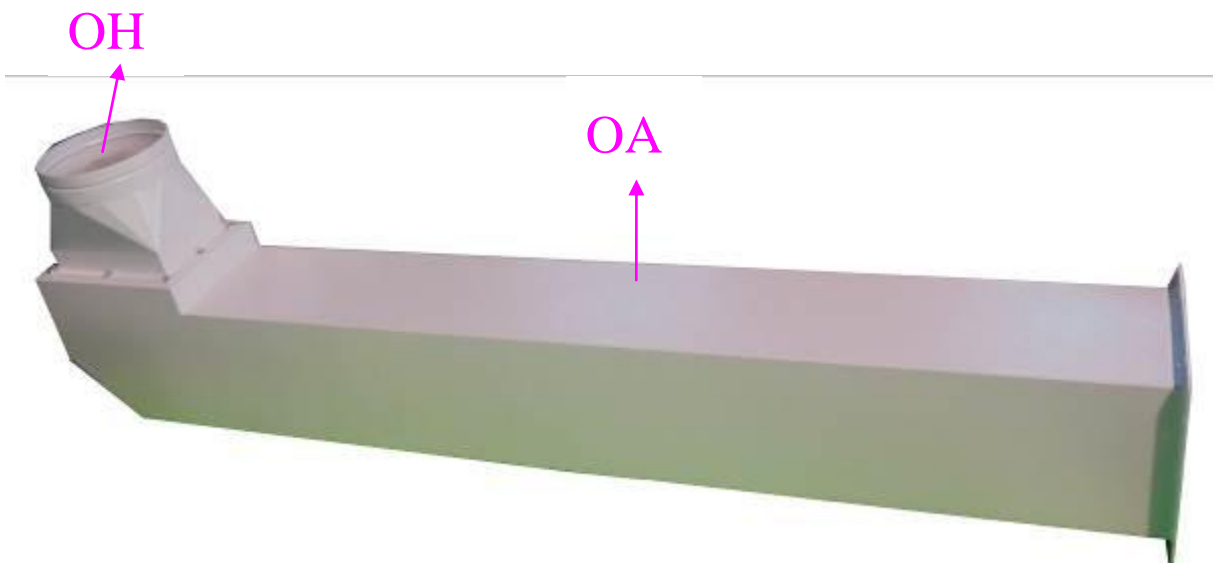
## ✚ Installations for the unit for EB-19x18x12.

Take out the number: **OH / OA**

- Lock **OH** to the **OA** with:

Part name	Description	Q'ty
Hex Screw	5/16" x 3/4"	32
Flat Washer	5/16" x OD18 x 2T	32

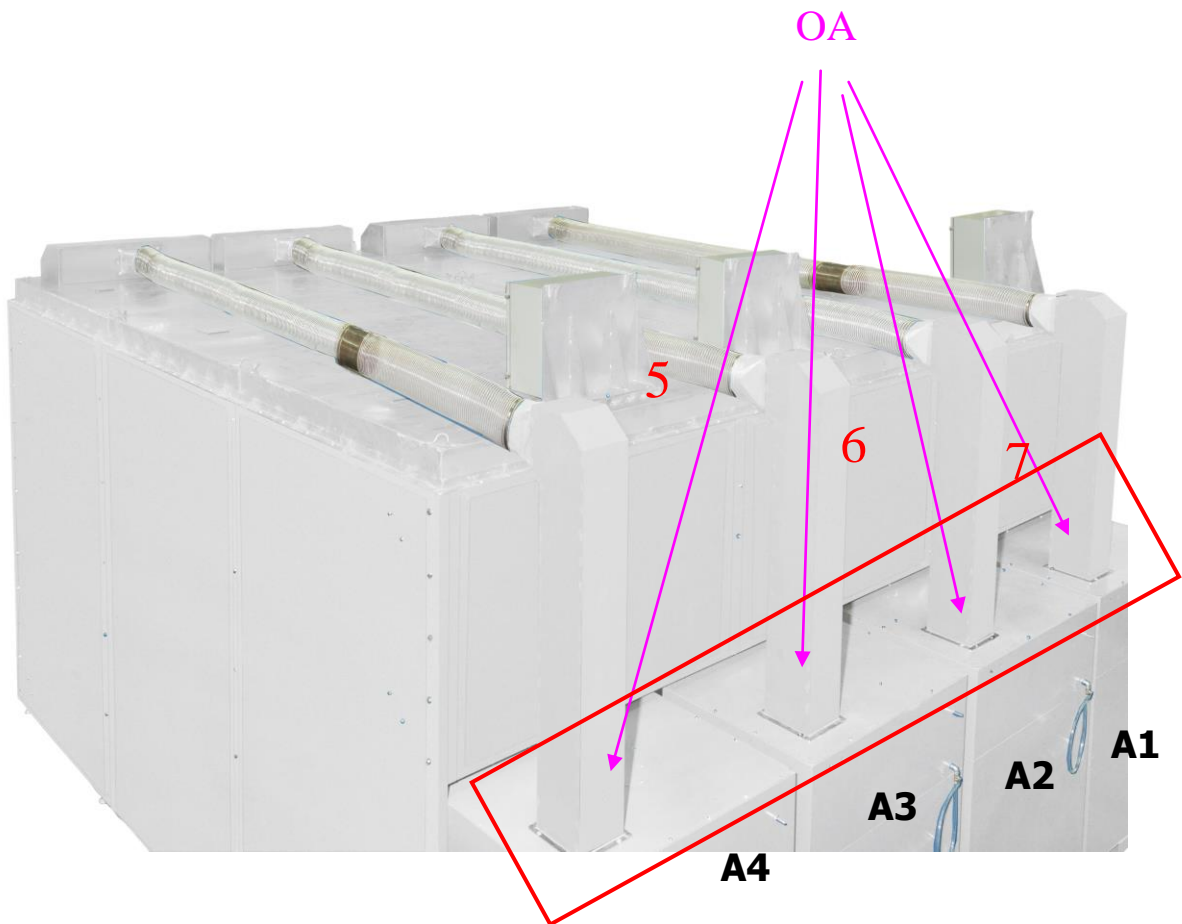
**Complete Assembled.**



## ✚ Installations for the unit for EB-19x18x12.

- Lock **OA** to the **A1 / A2 / A3 / A4** with:

Take out the Hardware number S			
Part name	Description	Q'ty	
Hex Screw	5/16" x 1"	32	
Flat Washer	5/16" x OD23 x 2T	32	

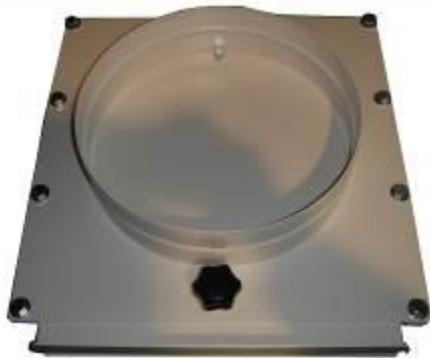


## ✚ Installations for the unit for EB-19x18x12.

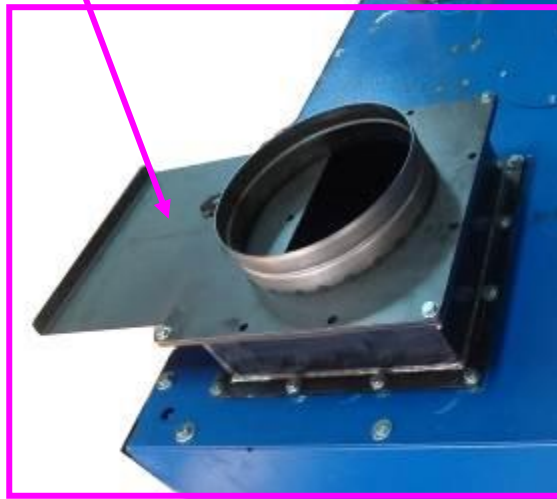
Take out the number: **OG**

- Lock **OG** to the **A1 / A2 / A3 / A4** with:

Take out the Hardware number T		
Part name	Description	Q'ty
Hex Screw	5/16" x 1"	48
Flat Washer	5/16" x OD18 x 2T	48



OG



**Open 1/3**

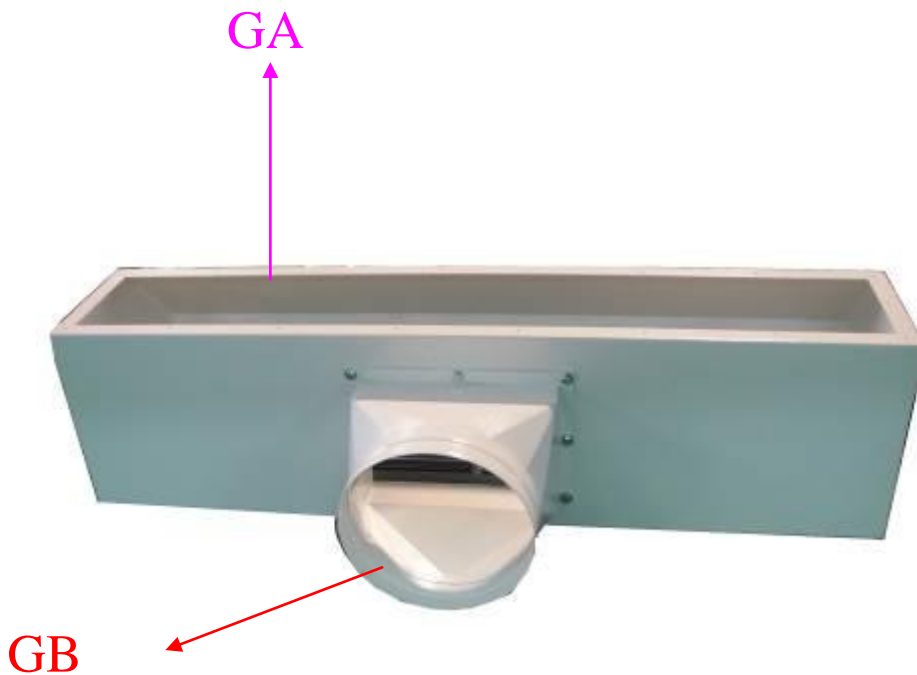
**The result is the best.**

## ✚ Installations for the unit for EB-19x18x12.

- Lock **GB** to the **GA** with:

Take out the Hardware number U		
Part name	Description	Q'ty
Hex Screw	5/16" x 3/4"	32
Flat Washer	5/16" x OD18 x 2t	32

**Complete Assembled.**



## ✦ Installations for the unit for EB-19x18x12.

- Lock **GC** to the **GA** with:

Part name	Description	Q'ty
Phillips Head Sheet Metal Screw	M4 x 12	72



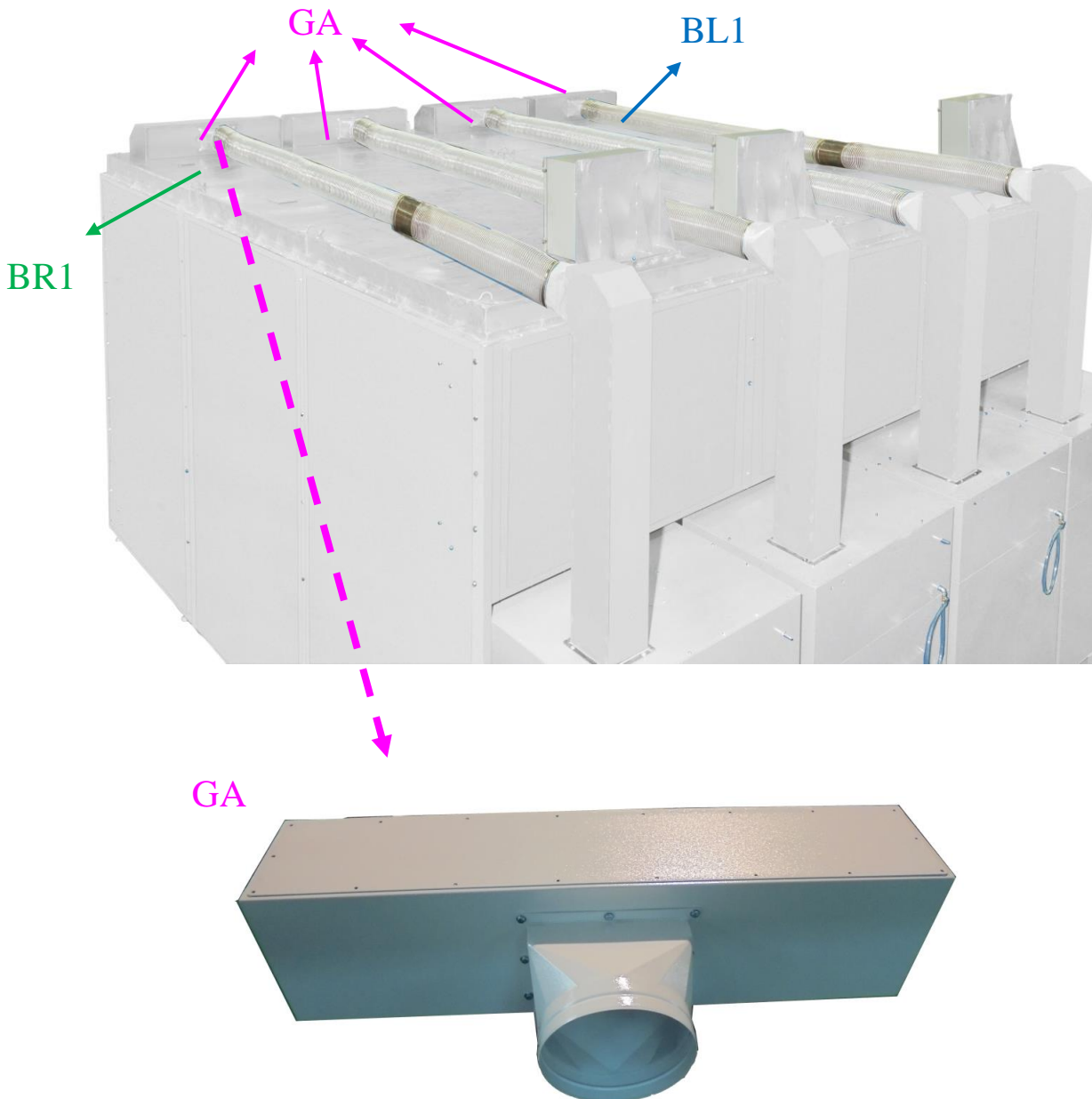
**Complete Assembled.**



## ✚ Installations for the unit for EB-19x18x12.

- Take out the number: **GA / GB / GC**
- Lock **GA** to the **BL1** and **BR1** with:

Take out the Hardware number V		
Part name	Description	Q'ty
Hex Screw	1/4" x 3/4"	72
Flat Washer	1/4" x OD19 x 2T	72

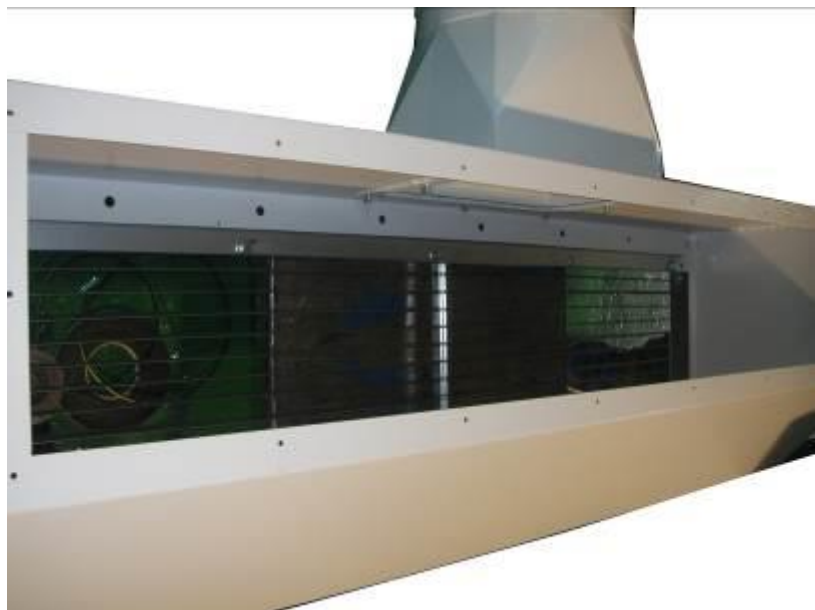




✚ Installations for the unit for EB-19x18x12.



Loosen the screws



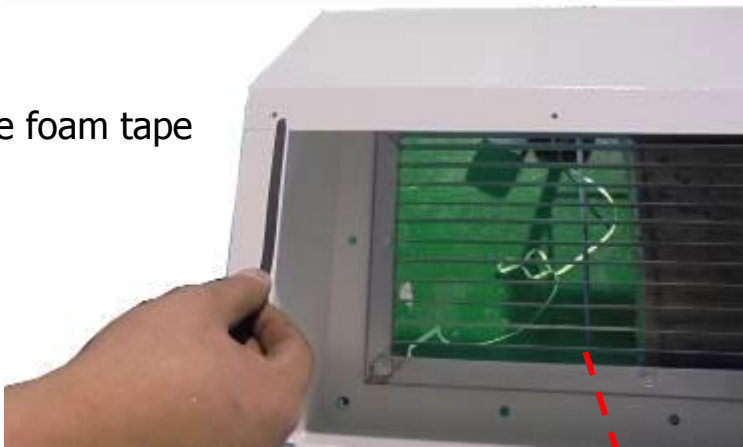
GC to remove First.

Lock **GA** to the **BL1** and **BR1**

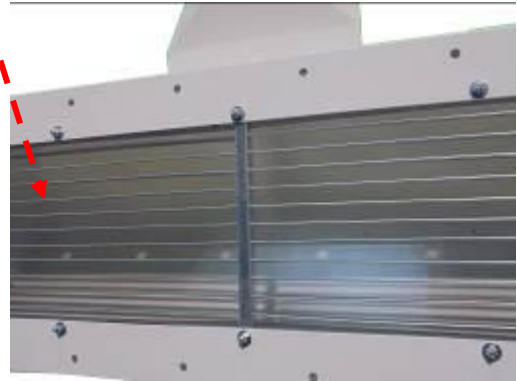


## ✚ Installations for the unit for EB-19x18x12.

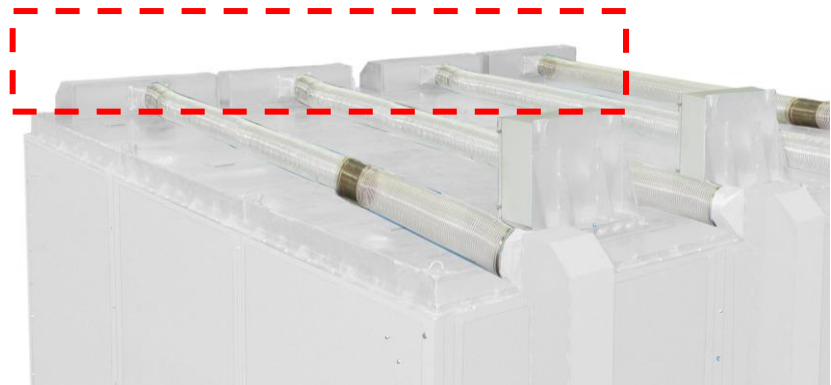
Stick the foam tape



**90° The result is the best.**



Lock the boards back and screw tightly.



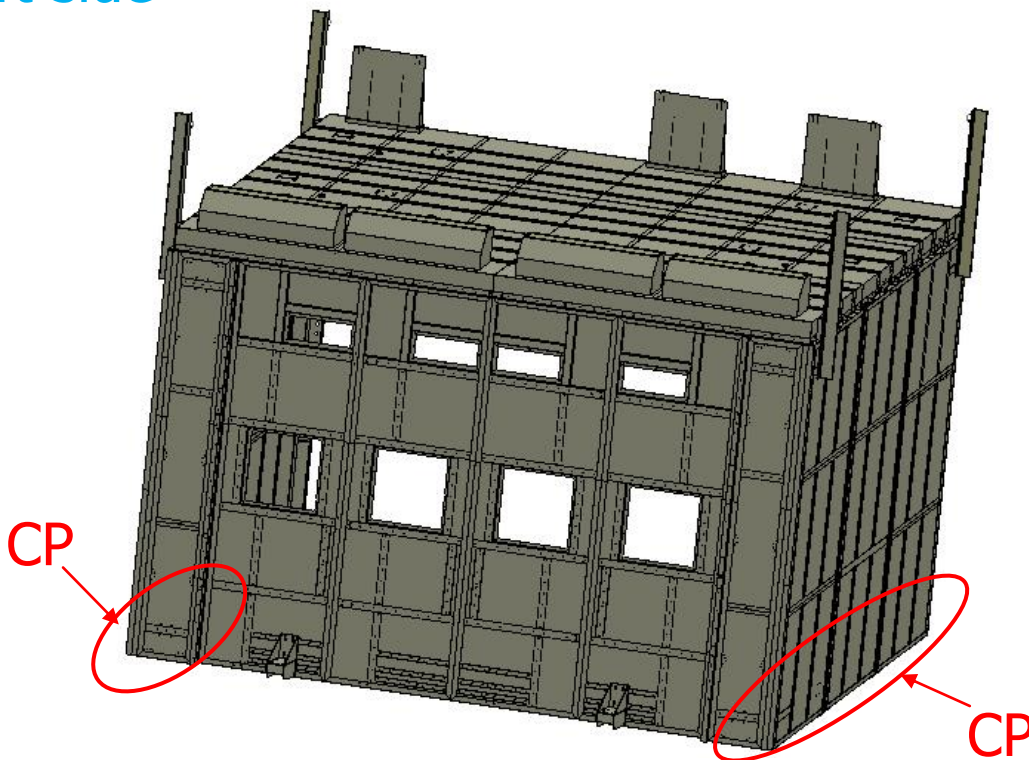
## ✚ Installations for the unit for EB-19x18x12.

- Lock **CP** to the **right side plates NO.1.2.3.4** and **left side plates NO.8.9.10.11** with:

Take out the Hardware number X			
Part name	Description	Q'ty	
Hex Screw	5/16" x 3/4"	18	
Flat Washer	5/16" x OD23 x 2t	18	

Left side

Right side



**+ Installations for the unit for EB-19x18x12.**

Right side



Left side



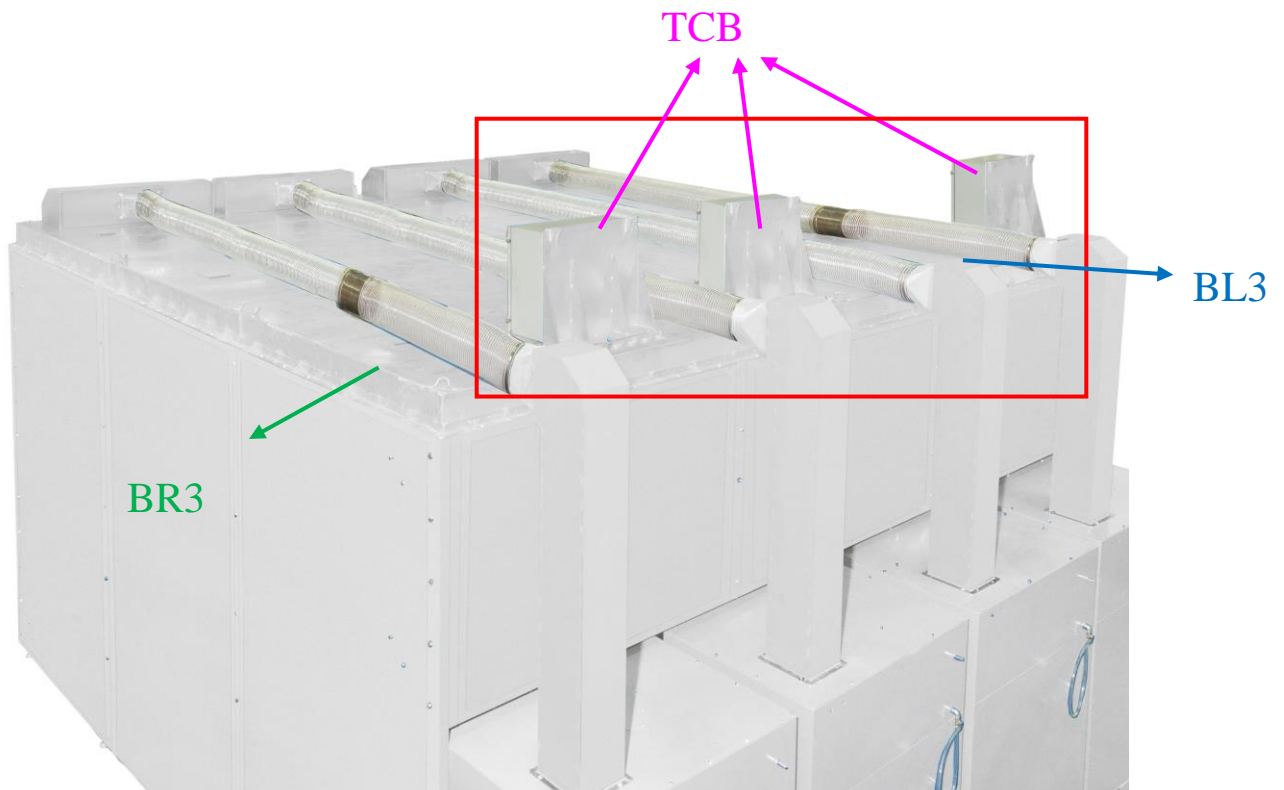
## ✚ Installations for the unit for EB-19x18x12.

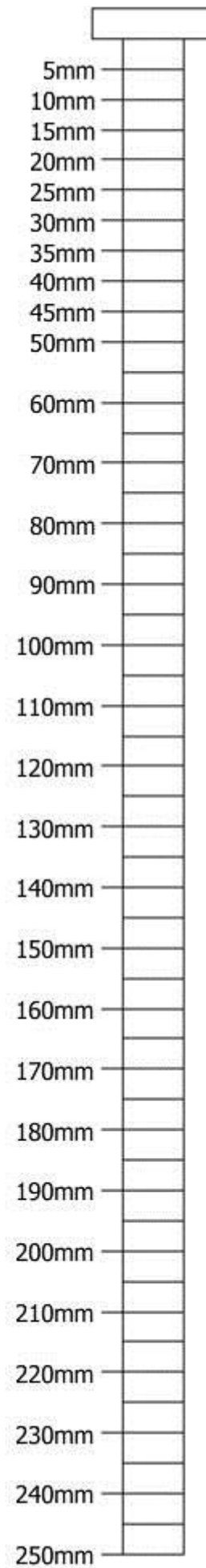
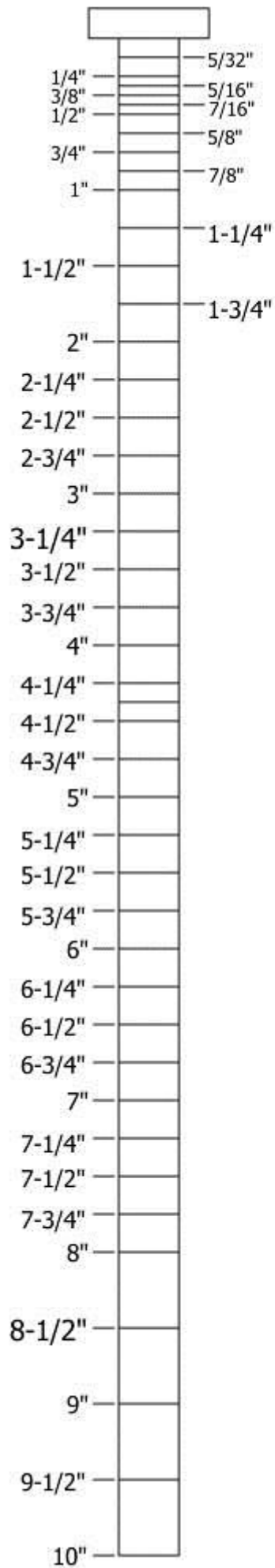
- Take out the number: **TCB**
- Lock **TCB** to the **BL3** and **BR3** with:

Take out the Hardware number AG		
Part name	Description	Q'ty
Hex Screw	5/16" x 3/4"	24
Flat Washer	5/16" x OD23 x 2T	24

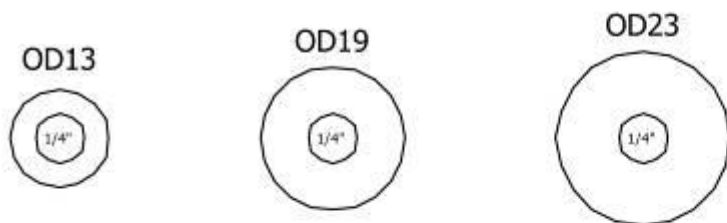
- Lock **Control Box** adjacent to the **TCB** with:

Take out the Hardware number P		
Part name	Description	Q'ty
Hex Screw	1/4" x 3/4"	8
Flat Washer	1/4" x OD13 x 2t	8

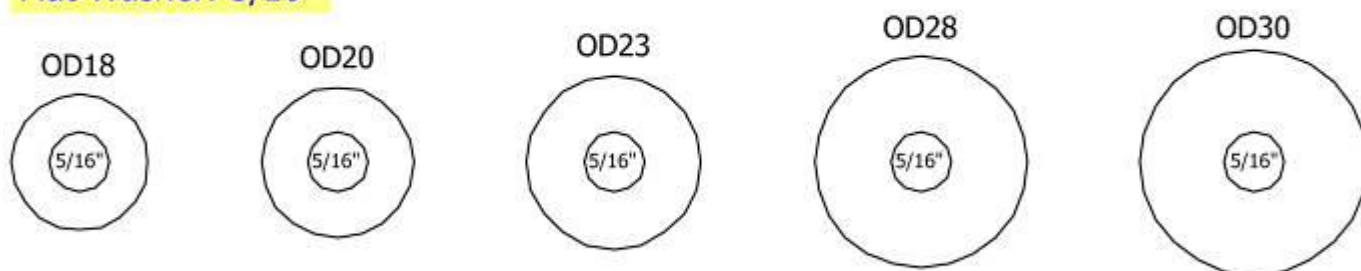




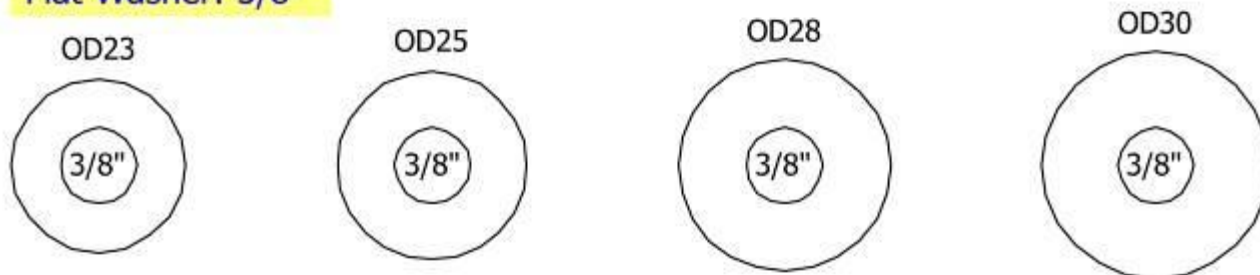
**Flat Washer: 1/4"**



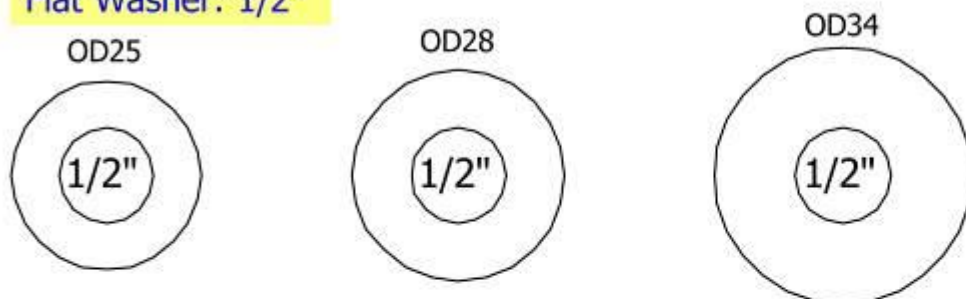
**Flat Washer: 5/16"**



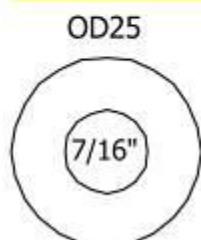
**Flat Washer: 3/8"**



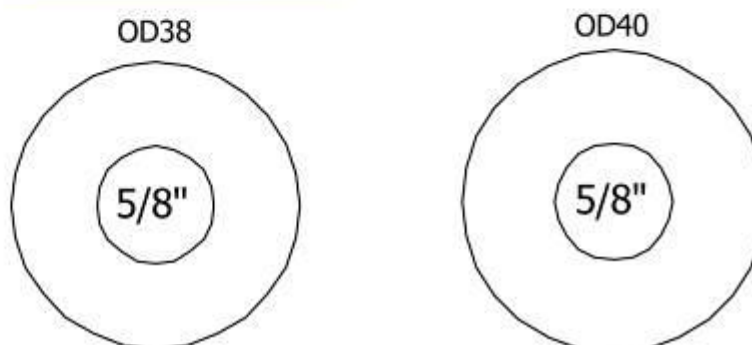
**Flat Washer: 1/2"**



**Flat Washer: 7/16"**



**Flat Washer: 5/8"**



## HEX NUT

3/16"



HEX NUT

1/4"



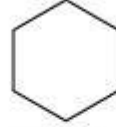
HEX NUT

5/16"



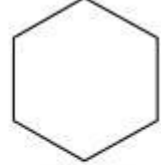
HEX NUT

3/8"



HEX NUT

1/2"



HEX NUT

## NYLON HEX NUT

1/4"



NYLON HEX NUT

5/16"



NYLON HEX NUT

3/8"



NYLON HEX NUT

1/2"



NYLON HEX NUT



