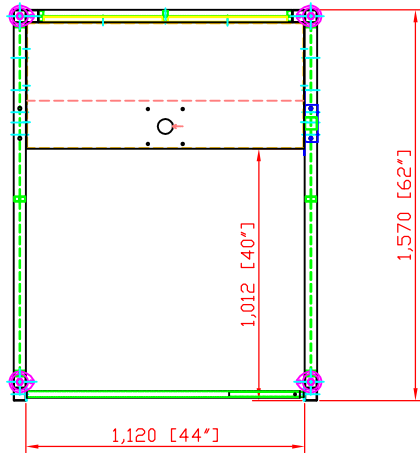


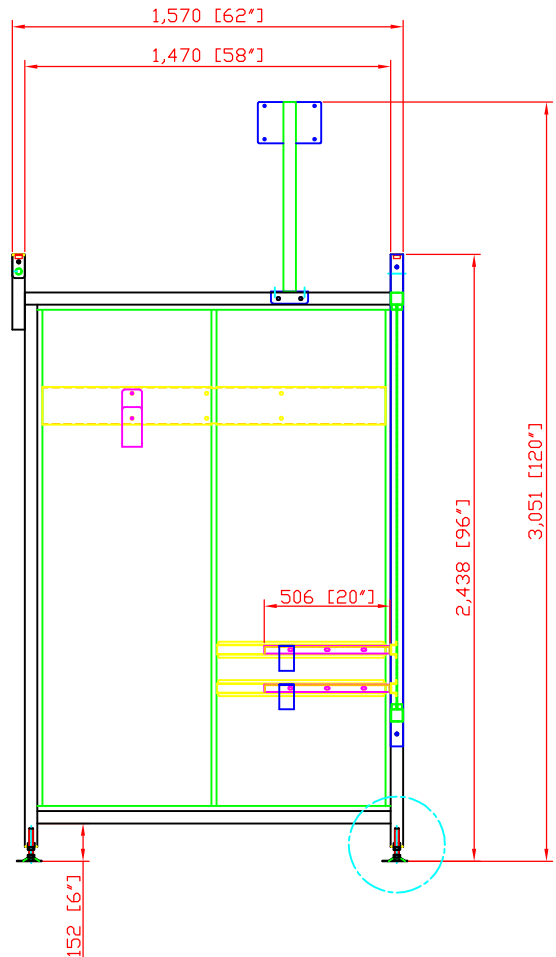
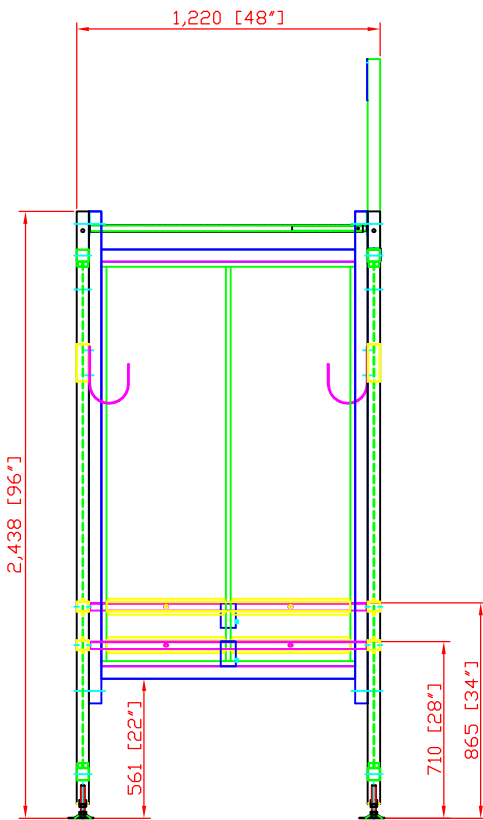


Revisions			
Rev	Description	Date	Approved



WB-1054 WELDING BOOTH SPECIFICATIONS

- Construction: 12 gauge steel
- Plates on feet for attaching to floor
- Adjustable shelf between 28-34" from floor
- Back Panels as per drawing,
- Side panels to that reach to 6" from floor level
- 120 volt electrical outlet
- Fluorescent light
- One J hook on each side panel, located one foot from back wall, 6' off floor
- Accessories will be (18) 1220 arms, and (18) BR005 brackets
- Welded nuts and welding nuts



AVANI ENVIRONMENTAL INTL. INC. Sales Department
 95 Cypress Drive
 Youngsville, NC 27596
 (919) 570-2862
 info@avanienvironmental.com

Drawn by:	Date	Name	Part Number:
Checked by:	2015-01-23	***	***
The drawings, AutoCAD, 3-D Models, and specifications are the property of Avani Environmental Intl. Inc. (AE) and may not be reproduced, distributed, modified, or otherwise used, except provided herein, without the express written permission of AE.			

Title: Booth WB-1054		
Size A	Scale 1 = 25	Drawing Number: WB-5x5S