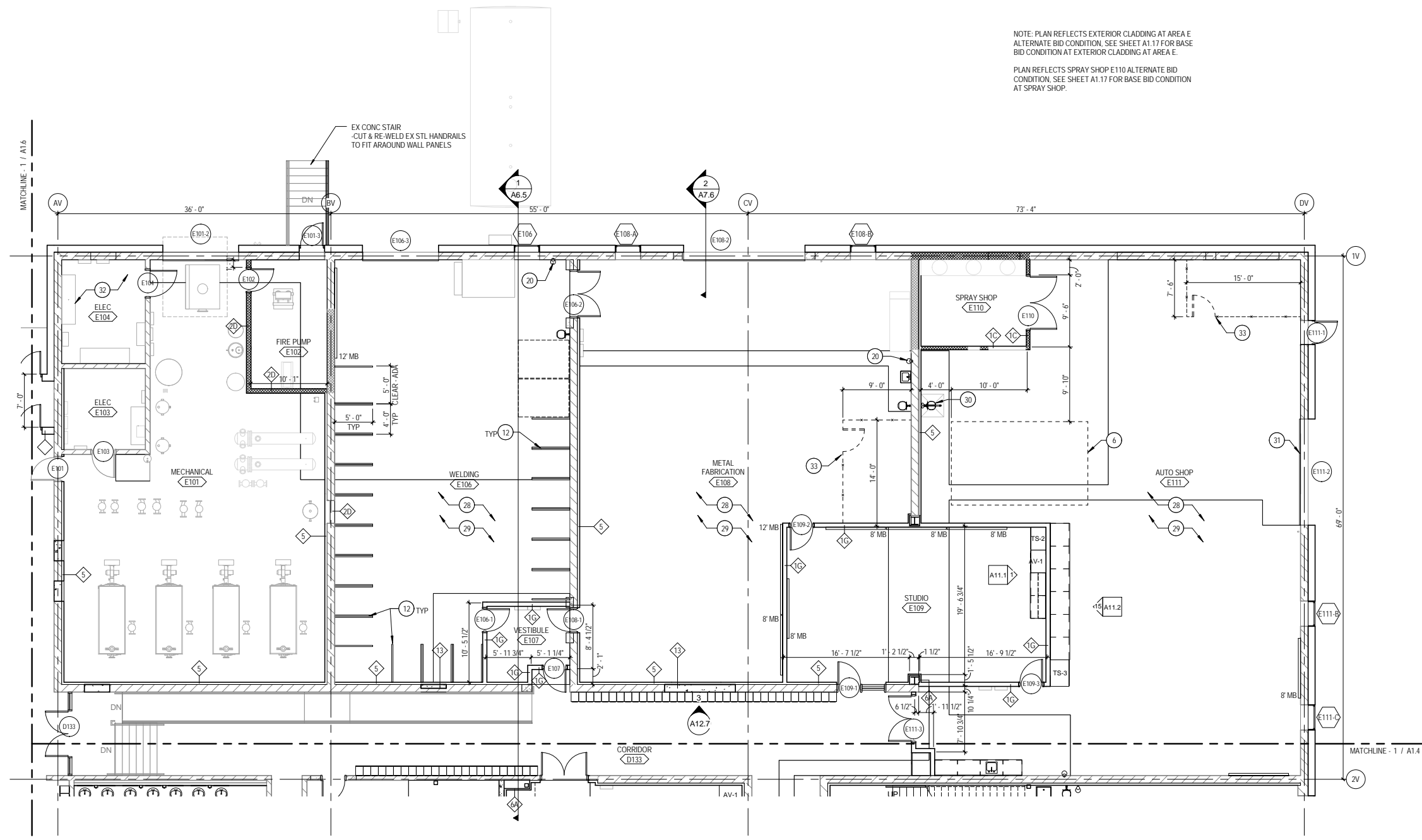


C:\Users\ad600\Documents\My Revit Projects\ARCH-KHS-10077-Combined\_d600.rvt  
4/30/2013 8:30:06 AM



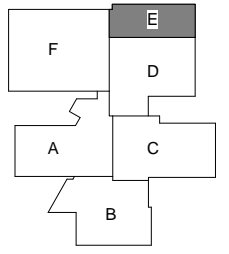
NOTE: PLAN REFLECTS EXTERIOR CLADDING AT AREA E ALTERNATE BID CONDITION, SEE SHEET A1.17 FOR BASE BID CONDITION AT EXTERIOR CLADDING AT AREA E.  
PLAN REFLECTS SPRAY SHOP E110 ALTERNATE BID CONDITION, SEE SHEET A1.17 FOR BASE BID CONDITION AT SPRAY SHOP.

**LEGEND NOTES**

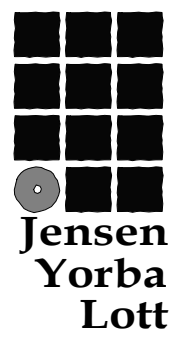
- 1 48" x 72" WALL MOUNTED MIRRORS TO EXTENT INDICATED ON PLAN, BOTTOM OF MIRROR 10" AFF.
- 2 BALLET BAR
- 3 FOLDING GRILLE
- 4 OPERABLE PARTITION
- 5 EYE GLASS STERILIZER
- 6 EXISTING AUTO LIFT, 18'-0" X 11'-0"
- 7 KILN
- 8 ENTRANCE FLOOR GRILLE, CONTRACTOR TO COORDINATE SLAB DEPRESSION W/ GRILLE MFR REQUIREMENTS, SEE DETAIL 13/A10.11
- 9 MOTORIZED TELESCOPIC SEATING, 900 SEAT MIN.
- 10 INTUMESCENT COATING ON STRUCTURAL STEEL IN LIEU OF APPLIED FIREPROOFING
- 11 NEW HANDRAIL PER DETAIL 3/A8.7, UNO
- 12 WELDING BOOTH WITH FUME ARM
- 13 CHAIN LINK GATE AND FENCE TO PREVENT PASSAGE TO MECH ROOM STAIR BELOW. PROVIDE LATCH AND HASP ON GATE FOR USE WITH PADLOCK
- 14 ACCORDION FOLDING DOOR
- 15 DECORATIVE METAL GUARDRAIL PER 10/A8.5
- 16 VOLLEYBALL POST INSERT
- 17 MOBILE SHELVING STORAGE
- 18 HEAVY DUTY METAL LOCKER
- 19 48" x 84" WALL MATS TO EXTENT INDICATED ON PLAN, BOTTOM OF WALL MAT 8" AFF.
- 20 PORTABLE FIRE EXTINGUISHER
- 21 ATHLETIC METAL LOCKER, HALF HEIGHT, DOUBLE STACKED, BASE PER DETAIL 9/A10.11
- 22 LOCKER BENCH
- 23 FIRE EXTINGUISHER CABINET, SEE DETAIL 16/A10.10
- 24 MTL PIPE GUARD RAIL PER 9/A8.5
- 25 GYM DIVIDER CURTAIN
- 26 FIRE RATED FOLDING DOOR
- 27 OVERHEAD COILING FIRE DOOR
- 28 CLEAN OUT SLAB EXISTING CONTROL JOINTS THIS ROOM, INFILL WITH SEALANT
- 29 PRIOR TO NEW WALL AND FURRING CONSTRUCTION, ACOUSTICALLY SEAL ALL EXISTING CMU WALLS THIS ROOM. SEALING SHOULD INCLUDE: SPRAY FOAM AT TOP OF WALL AROUND JOISTS AND ROOF DECK, SEALANT AND SPRAY FOAM AT EXISTING WALL PENETRATIONS, SEALANT AT EXISTING WALL BASE, AND SEALANT AT THROUGH WALL HOLES
- 30 EMERGENCY SHOWER STATION, 1/4" PER FOOT FLOOR SLOPE TO DRAIN IN 3'-0" X 3'-0" AREA
- 31 NEW TRENCH DRAIN, SEE STRUCTURE AND MECHANICAL
- 32 INFILL AREA W/ NEW CONC FLOOR SLAB TO MATCH EXISTING ADJACENT FINISH ELEVATION
- 33 CHAIN LINK PARTITION SYSTEM
- 34 PROVIDE 24"x24" FIRE RATED ACCESS PANEL BELOW COUNTER
- 51 STUB WASTE TO THIS AREA FOR FUTURE WORK BY OTHERS
- 52 WINDOWS ALIGN W/ WINDOWS BELOW
- 53 INFILL WINDOW OPENING W/ MTL STUDS & DRYWALL TO ALIGN W/ EX ADJACENT FINISHES
- 54 CHASE AROUND MECHANICAL, PLUMBING & ELECTRICAL SYSTEMS (BASE BID CONDITION)

**GENERAL NOTES:**  
 A. CONTRACTOR TO PROVIDE BLOCKING AND STRAPPING FOR WALL MOUNTED ITEMS. ITEMS INCLUDE BUT NOT LIMITED TO GRAB BARS, VANITY UNITS, TOILET ACCESSORIES, WALL CABINETS, MARKER BOARDS, COUNTER SUPPORT BRACKETS, FOOD SERVICE EQUIPMENT, DOOR STOPS, SHELVES, FIRE EXTINGUISHERS, COAT HOOKS, CHEMICAL DISPENSER UNITS. DIMENSION FOR DOORS AND FRAMES ARE SHOWN ACTUAL, ADD TO ROUGH OPENINGS FOR SHIM AND SEALANT.  
 B. SEE FINISH PLANS AND FINISH SCHEDULE FOR ADDITIONAL WALL AND FLOOR COVERING REQUIREMENTS, INCLUDING BUT NOT LIMITED TO WAINSCOT, TACK BOARD, CERAMIC TILE, AND FRP.  
 C. SEE MECHANICAL AND ELECTRICAL FOR WALL AND CEILING ACCESS PANEL LOCATIONS AND REQUIREMENTS.  
 D. ALL DIMENSIONS ARE TO FACE OF STUD, UNO.  
 E. ALL COLUMNS, BEAMS, & FLOOR ASSEMBLIES TO RECEIVE 1 HOUR APPLIED FIRE PROOFING UNO. SEE STRUCTURAL FRAMING PLANS FOR INDICATION OF 2 HOUR APPLIED FIRE PROOFING AND INTUMESCENT COATING. FIREPROOFING NOT REQUIRED AT SEISMIC BRACING.  
**WALL LEGEND:**  
 CROSS-HATCH INDICATES RATED WALL. REFER TO CODE PLANS FOR TYPE OF RATING. REFER TO A0.1, A0.2, AND 1&2/A10.1 FOR CONSTRUCTION ASSEMBLIES. FOR EXISTING WALLS THAT REQUIRE RATING, FIRE CAULK AND FIRE BLOCK ANY EXISTING OPENINGS.

**KEY PLAN**



**1 FIRST LEVEL PLAN - AREA E**  
SHEET: A1.5 SCALE: 0 4' 8' 16'



**Jensen Yorba Lott Inc.**  
522 West 10th Street  
Juneau, Alaska 99801  
Phone 907-586-1070  
Fax 907-586-3959  
jensenyorbaloott.com

**DLR Group**  
Architecture  
Engineering  
Planning Interiors  
dlrgroup.com



**Kodiak Island Borough  
School District  
Kodiak High School Renovation  
Kodiak, Alaska**

**CONFORMED  
APRIL 19, 2013**

SHEET TITLE  
**FIRST LEVEL PLAN  
- AREA E**

DATE: January 7, 2013  
FILE: 10077

**A1.5**