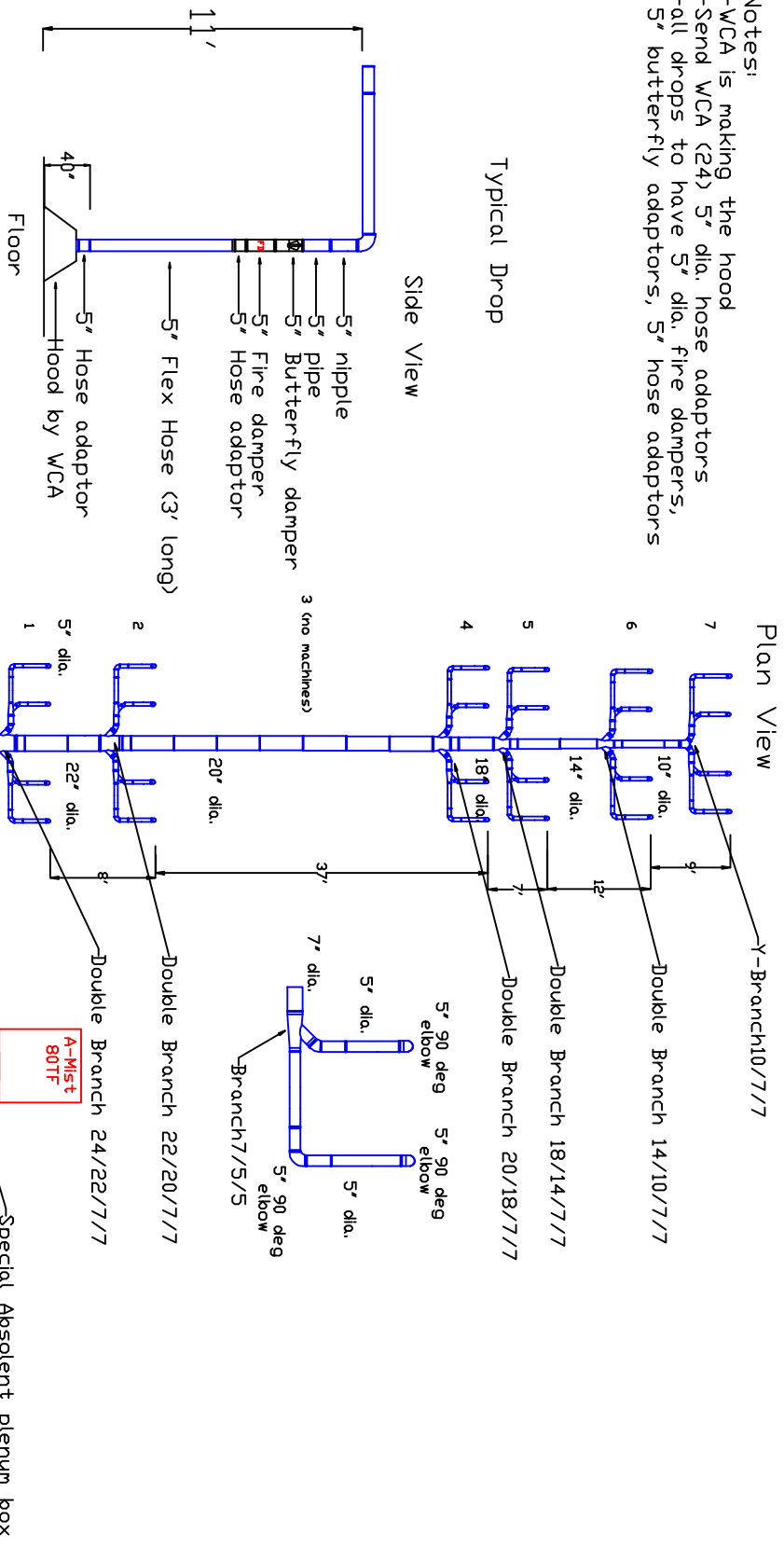


Absolent Ductwork Layout for the Pointers

- Notes:
- WCA is making the hood
 - Send WCA (24) 5" dia. hose adaptors
 - all drops to have 5" dia. fire dampers,
 - 5" butterfly adaptors, 5" hose adaptors



A-Mist 80TF (ODF 8000)
 Motor: 10 HP - 240 volts -3 phase
 FLA @ 240 volts = 28 amps

Drawing Approved BY: _____

Date: _____

<p>Avani Environmental Intl. 95 Cypress Drive 27596 Youngsville, NC # 919-570-2862 # 919-570-2863</p>	
<p>Project: West Coast Aerospace</p>	
<p>Drawing: Pointers Layout</p>	
<p>Date: 7/25/12 Drawn by: W/WB</p>	
<p>Sheet No: 1 of 1 Rev.: 1</p>	