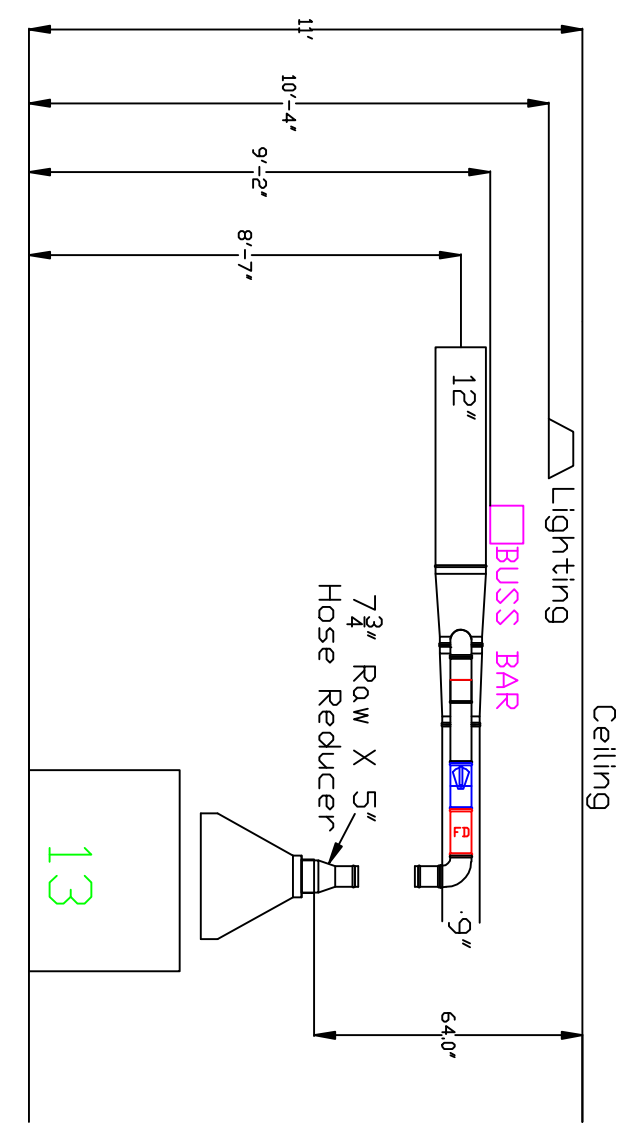
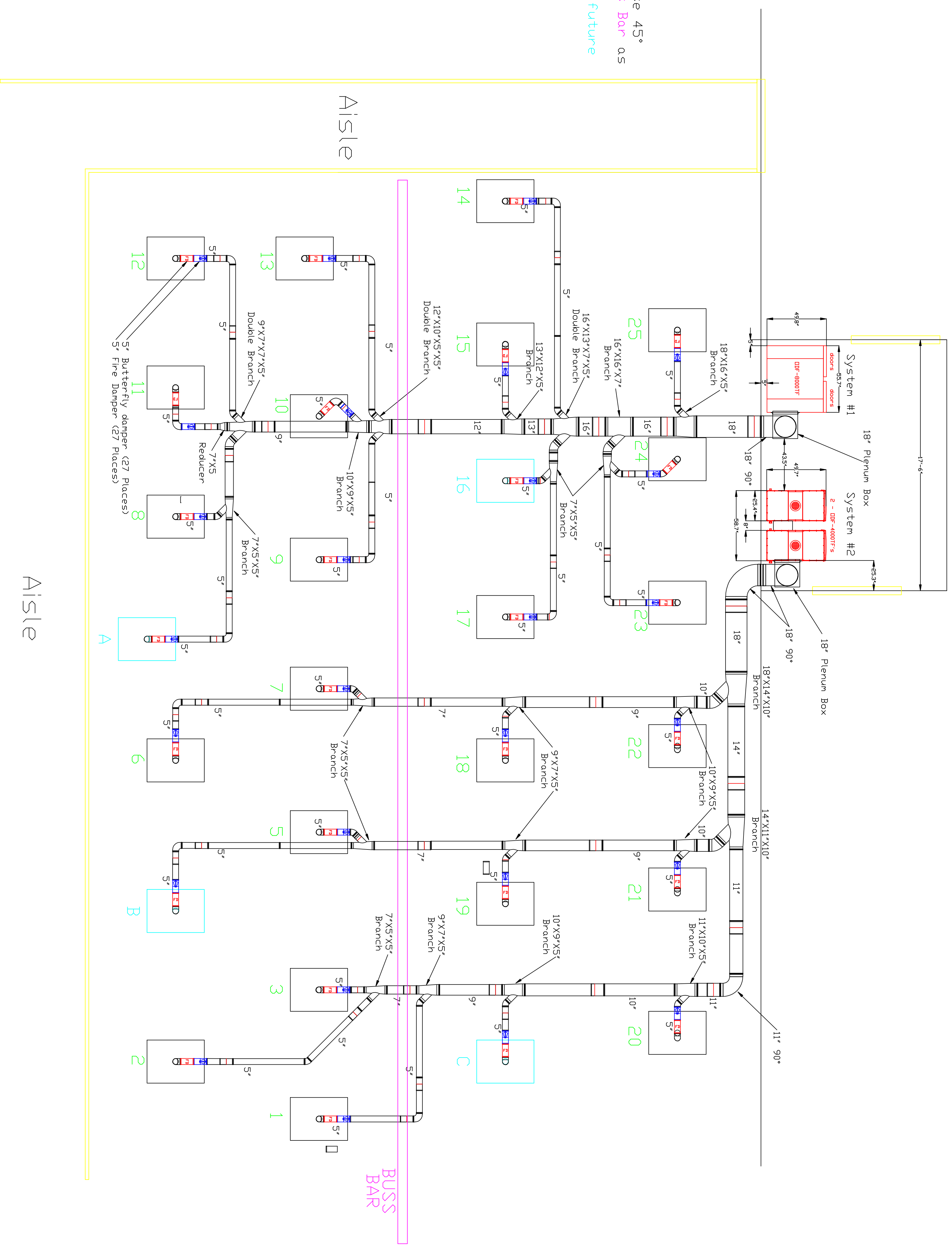


TrueForm - West : West Coast Aerospace Grinder Project

- 1) DDF-8000TF (System #1)
 - a) 10hp, 230volts, 3 phase, 27.6 FLA
 - b) Max Air Flow: 8000m³/hr. - 4700CFM
- 2) DDF-4000TF (Stsem #2) (2 units)
 - a) 5.4hp, 230volts, 3 phase, 15.6 FLA
 - b) Max Air Flow: 4000m³/hr. - 2350CFM
- 3) Bus bar is 9' 2" off of the floor. Use 45° elbows to offset and drop below Bus Bar as needed.
- 4) There are **23 current machines** and **4 future machines**.



Typical Elevation View



Plan View

Avani Environmental Intl.
 95 Cypress Drive 27596
 Youngsville, NC
 PH 919-570-2862 F# 919-570-2863

Avani

Project: TrueForm - West Coast Aerospace
 Drawing: Grinder Project - Plan View
 Date: 7/19/12
 Drawn by: WWB
 Rev: 1

Sheet: No 1 of 1