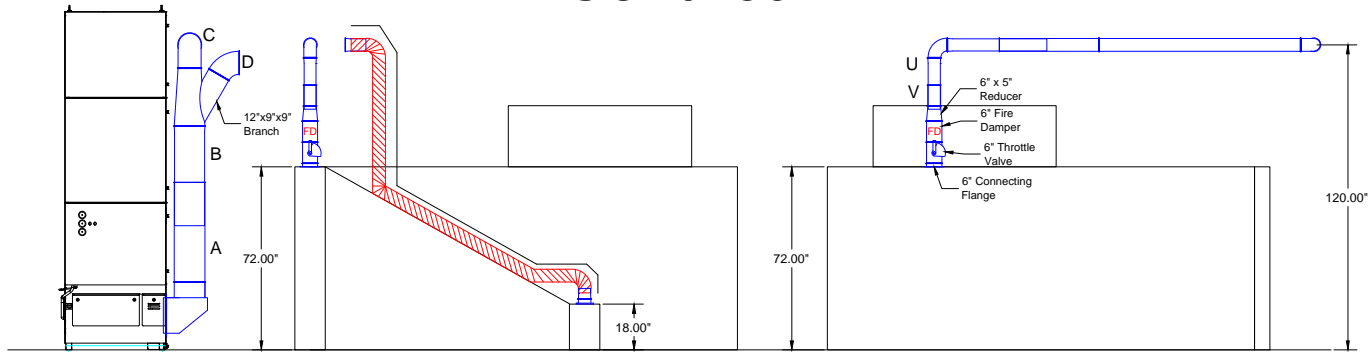
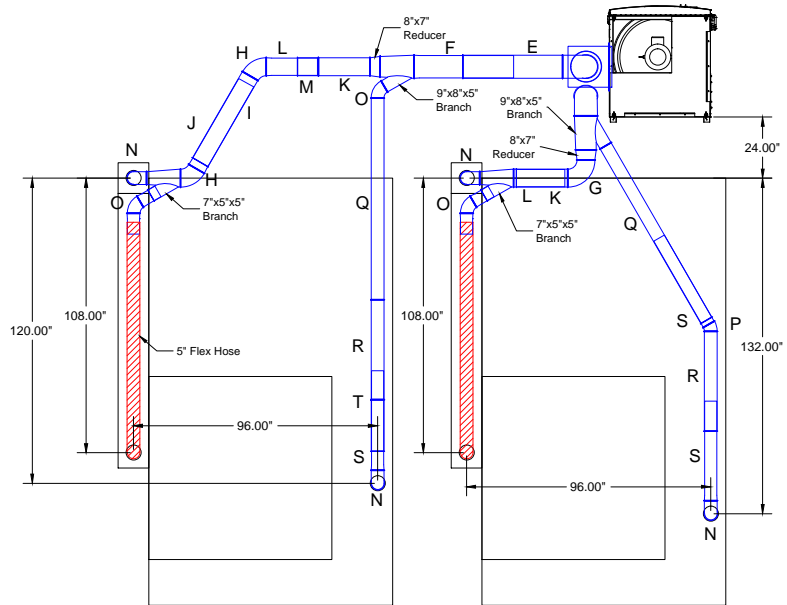


Rightway Duct Layout SO20786



Elevation View



Plan View

- Notes:
- | | |
|---------------------------|--------------------------|
| A. Ø12" 1000 mm tube | L. Ø7" 500 mm slip tube |
| B. Ø12" 1000 mm slip tube | M. Ø7" 200 mm tube |
| C. Ø9" 90° Elbow | N. Ø5" 90° Elbow |
| D. Ø9" 60° Elbow | O. Ø5" 60° Elbow |
| E. Ø9" 1000 mm tube | P. Ø5" 30° Elbow |
| F. Ø9" 1000 mm slip tube | Q. Ø5" 2000 mm tube |
| G. Ø7" 90° Elbow | R. Ø5" 1000 mm tube |
| H. Ø7" 60° Elbow | S. Ø5" 1000 mm slip tube |
| I. Ø7" 1000 mm tube | T. Ø5" 500 mm tube |
| J. Ø7" 1000 mm slip tube | U. Ø5" 500 mm slip tube |
| K. Ø7" 500 mm tube | V. Ø5" 200 mm tube |

Avani Environmental Intl. 95 Cypress Drive Youngsville, NC 27596 P# 919-570-2862 F# 919-570-2863		<h2 style="margin: 0;">Avani</h2>
Project: Rightway SO20322		
Drawing: Duct Layout		
Date: 1/17/14	Drawn by: MDT	
Sheet No: 1 of 1	Rev 0	