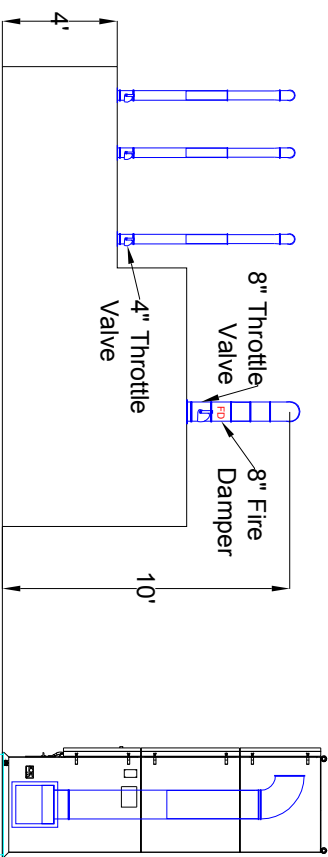
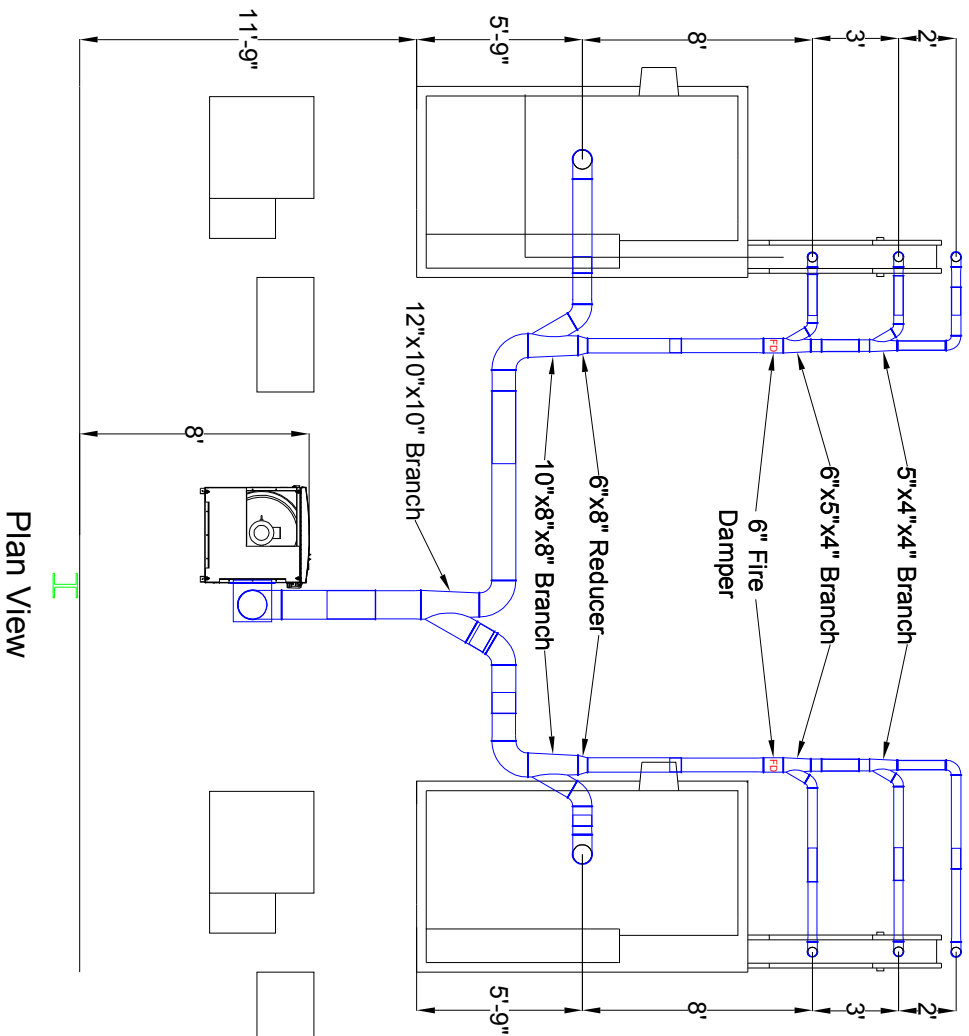


# MacLean Fogg Sanshing Fastech Corp Duct Layout



- Notes:
1. Jacobs Tubing
  2. Support from Machine & Ceiling via Gripples
  3. Will ship 10" Throttle Valve to bleed in while awaiting other system (ETA 2/14)

Avani Environmental Intl. 95 Cypress Drive Youngsville, NC 27596 P# 919-570-2862 F# 919-570-2863		
<b>Project: MacLean Fogg</b>		
<b>Drawing: Sanshing Fastech Duct Layout</b>		
Date: 11/11/13	Drawn by: MDT	
Sheet No: 1 of 1		Rev.: 0