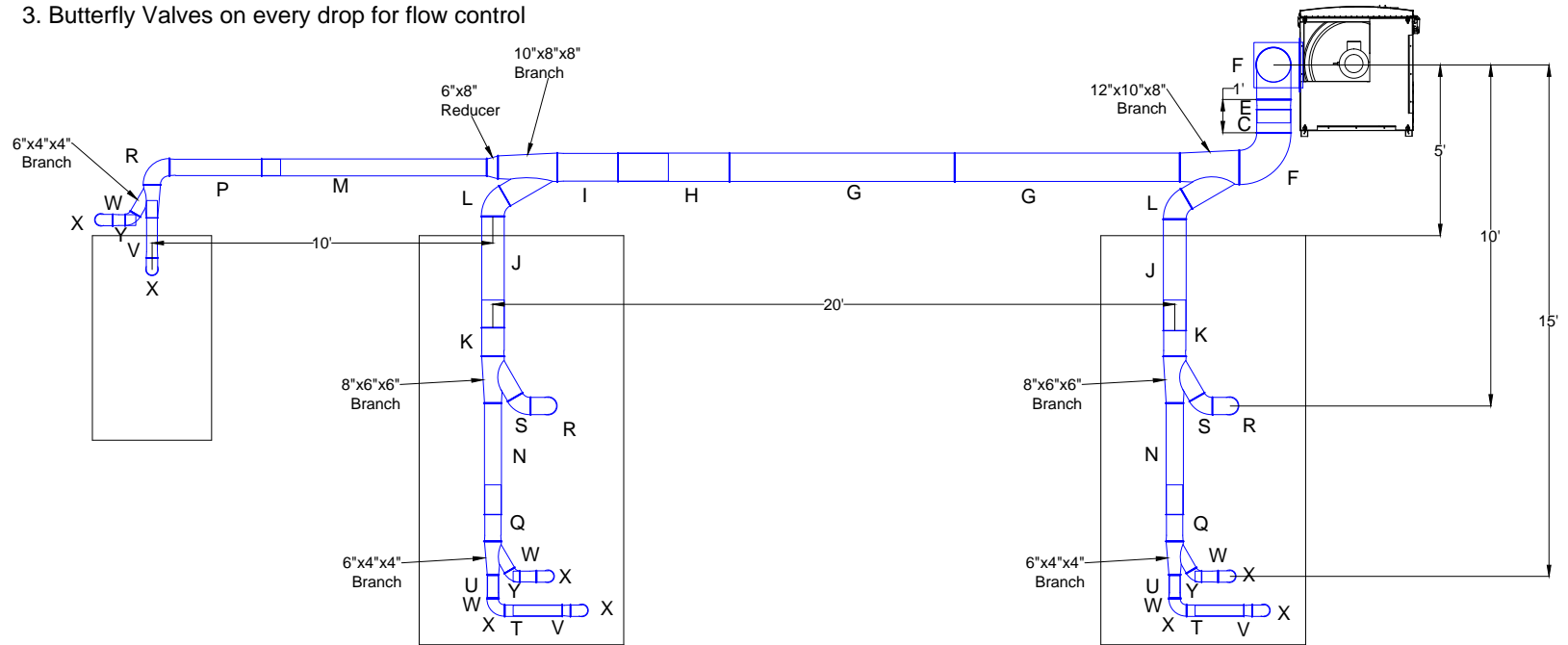


Truform IAF - SO20226

Duct Layout

Notes:

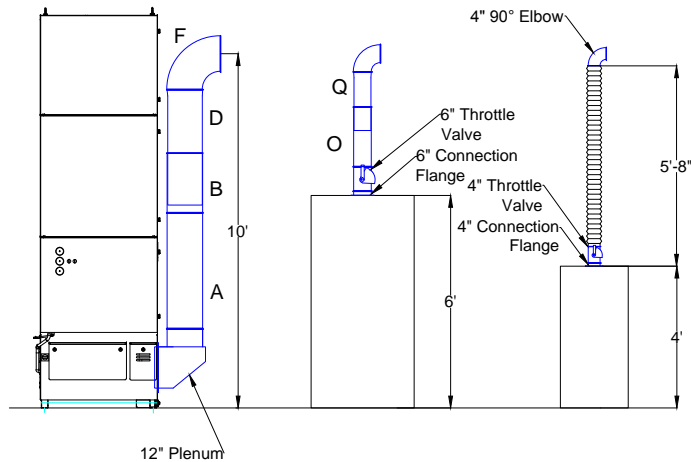
1. Jacobs Tubing
2. A-Smoke 40
3. Butterfly Valves on every drop for flow control



Plan View

Parts:

- | | |
|-----------------------------|----------------------------|
| A=12" dia. 1000mm tube | M=6" dia. 2000mm tube |
| B=12" dia. 500mm tube | N=6" dia. 1000mm tube |
| C=12" dia. 200mm tube | P=6" dia. 1000mm slip tube |
| D=12" dia. 1000mm slip tube | Q=6" dia. 500mm slip tube |
| E=12" dia. 200mm slip tube | R=6" dia. 90 deg elbow |
| F=12" dia. 90 deg elbow | S=6" dia. 60 deg elbow |
| G=10" dia. 2000mm tube | T=4" dia. 500mm tube |
| H=10" dia. 1000mm tube | U=4" dia. 200mm tube |
| I=10" dia. 1000mm slip tube | V=4" dia. 500mm slip tube |
| J=8" dia. 1000mm tube | W=4" dia. 200mm slip tube |
| K=8" dia. 500mm slip tube | X=4" dia. 90 deg elbow |
| L=8" dia. 60 deg elbow | Y=4" dia. 60 deg elbow |



Elevation View

Avani Environmental
 95 Cypress Drive
 Youngsville, NC 27596
 P# 919-570-2862 F# 919-570-2863

Avani

Project: Truform IAF - SO20226

Drawing: Duct Layout

Date: 8/12/13

Drawn by: MDT

Sheet No: 1

Rev.: 0