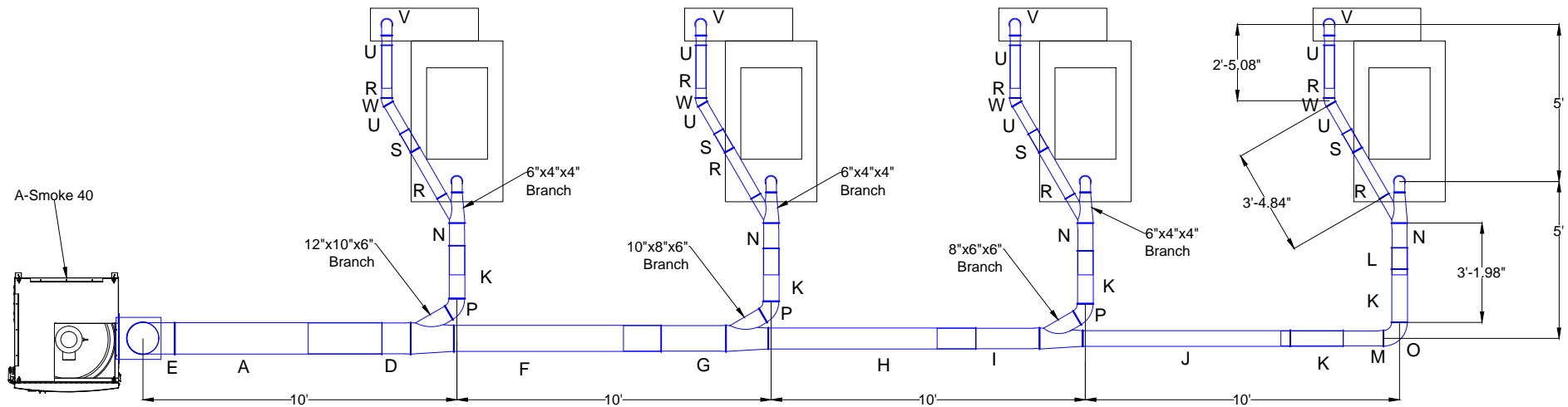


Truform IAF - SO20225

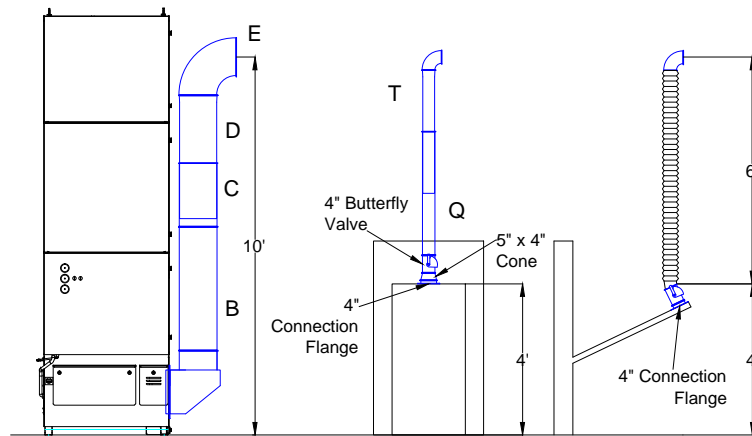
Duct Layout

Notes:

1. Jacobs Tubing
2. A-Smoke 40
3. Butterfly Valves on every drop for flow control



Plan View



Elevation View

Parts:

- A=12" dia. 2000mm tube
- B=12" dia. 1000mm tube
- C=12" dia. 500mm tube
- D=12" dia. 1000mm slip tube
- E=12" dia. 90 deg elbow
- F=10" dia. 2000mm tube
- G=10" dia. 1000mm slip tube
- H=8" dia. 2000mm tube
- I=8" dia. 1000mm slip tube
- J=6" dia. 2000mm tube
- K=6" dia. 500mm tube

- L=6" dia. 200mm tube
- M=6" dia. 1000mm slip tube
- N=6" dia. 500mm slip tube
- O=6" dia. 90 deg elbow
- P=6" dia. 60 deg elbow
- Q=4" dia. 1000mm tube
- R=4" dia. 500mm tube
- S=4" dia. 200mm tube
- T=4" dia. 1000mm slip tube
- U=4" dia. 500mm slip tube
- V=4" dia. 90 deg elbow
- W=4" dia. 30 deg elbow

Avani Environmental
 95 Cypress Drive
 Youngsville, NC 27596
 P# 919-570-2862 F# 919-570-2863

Avani

Project: Truform IAF - SO20225

Drawing: Duct Layout

Date: 8/12/13

Drawn by: MDT

Sheet No: 1

Rev.: 0