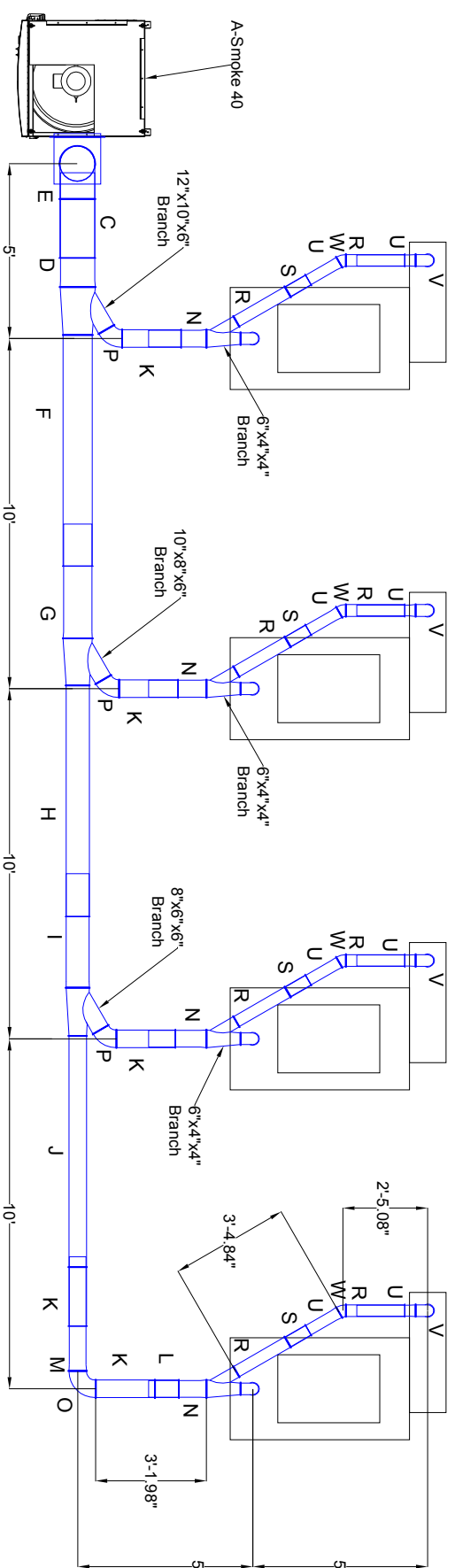


Truform IAF - SO202225

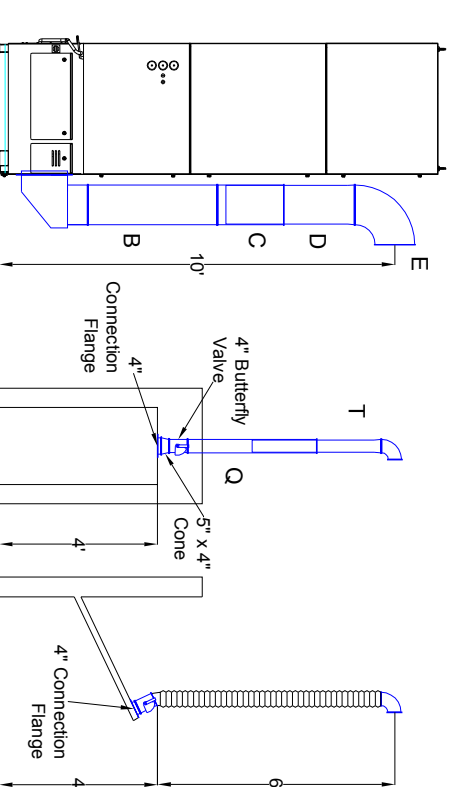
Duct Layout

- Notes:
1. Jacobs Tubing
 2. A-Smoke 40
 3. Butterfly Valves on every drop for flow control



Plan View

- Parts:
- A=12" dia. 2000mm tube
 - B=12" dia. 1000mm tube
 - C=12" dia. 500mm tube
 - D=12" dia. 1000mm slip tube
 - E=12" dia. 90 deg elbow
 - F=10" dia. 2000mm tube
 - G=10" dia. 1000mm slip tube
 - H=8" dia. 2000mm tube
 - I=8" dia. 1000mm slip tube
 - J=6" dia. 2000mm tube
 - K=6" dia. 500mm tube
 - L=6" dia. 200mm tube
 - M=6" dia. 1000mm slip tube
 - N=6" dia. 500mm slip tube
 - O=6" dia. 90 deg elbow
 - P=6" dia. 60 deg elbow
 - Q=4" dia. 1000mm tube
 - R=4" dia. 500mm tube
 - S=4" dia. 200mm tube
 - T=4" dia. 1000mm slip tube
 - U=4" dia. 500mm slip tube
 - V=4" dia. 90 deg elbow
 - W=4" dia. 30 deg elbow



Elevation View

Avani

Avani Environmental
95 Cypress Drive
Youngsville, NC 27596
P# 919-570-2862 F# 919-570-2863

Project: Truform IAF - SO202225

Drawing: Duct Layout

Date: 8/12/13

Drawn by: MDT

Sheet No: 1

Rev.: 1