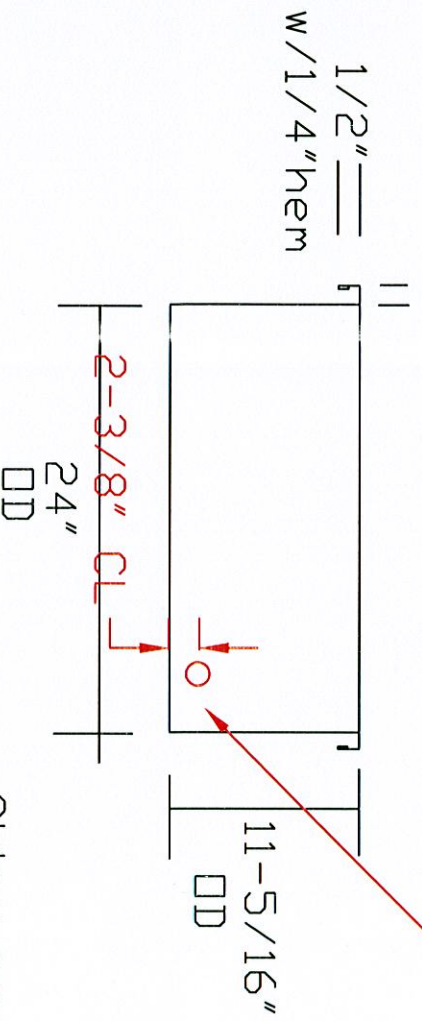




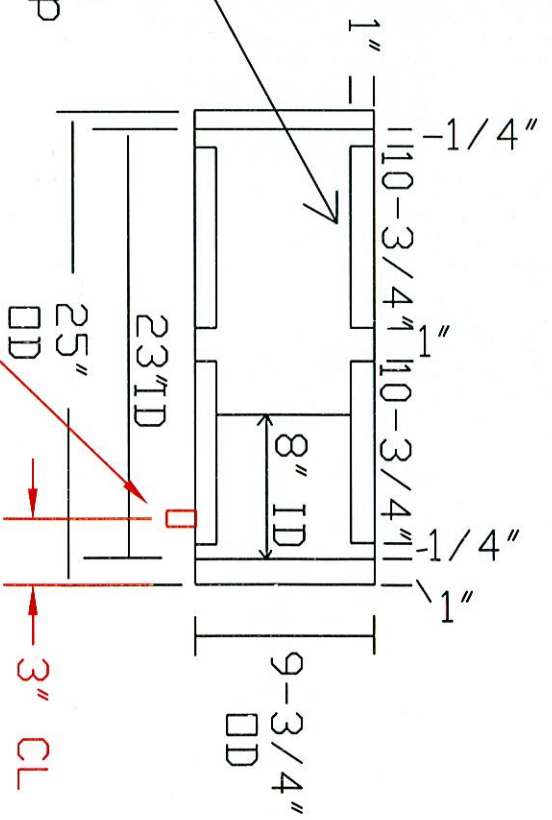
# Mist Pump DDR Housing

Front View



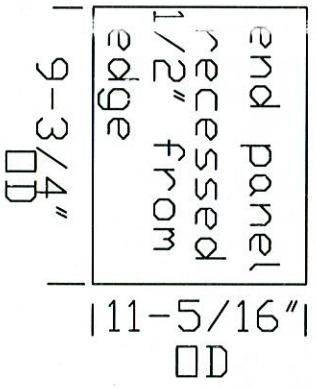
weld 1-1/4" Male NPT black pipe fitting

Plan View



weld 1-1/4" Male NPT black pipe fitting

End View



Box made of 16 gauge steel. Weld all seams, box to be water tight. Powder coat paint outside.

Avani Environmental 95 Cypress Drive Youngsville, NC P# 919-570-2862 F# 919-570-2863	<b>Avani</b>
Project: Amsted Rail	
Drawing: Mist Pump Housing	
Date: 5/15/12 Drawn by: DDJ	
Sheet No:	

# Side View of Oil Pump box connection

