



REPRESENTED BY:

TODD AIR SOLUTIONS
101 E FISHER ST, 3rd FLOOR
SALISBURY NC 28144
Phone: 704 630-1101
Fax: 704 630-0528

DRAWING SUBMITTAL

CUSTOMER:

AVANI ENVIRONMENTAL
PO BOX 1279
YOUNGSVILLE, NC 27596

DATE: 7/8/2011

ATTENTION: Mr. Fred Johnson
P.O. # 3258
CFV # 1108456
REPRESENTATIVE ORDER # CFQ# 183536

x REFERENCE APPROVAL CORRECTION

Table with 2 columns: DRAWING NO. and DESCRIPTION. Rows include SPECIFICATION SHEET, MODEL: HDBI-270, DISCHARGE FLANGE, and DISCHARGE DAMPER.

REMARKS: 2D AUTOCAD DRAWING INCLUDED.

**SPECIFICATION SHEET**

CFV NO. <b>1108456</b>	CUSTOMER ID NUMBER <b>3566220</b>	PAGE <b>1</b>	
S O L D  T O	AVANI ENVIRONMENTAL PO BOX 1279 YOUNGSVILLE, NC 27596		S H I P  T O
			AMSTED RAIL ASF-K HAMMOND 4831 HOHMAN AVENUE ATTN: PO#: 4500104795 HAMMOND, IN 46327
		CUSTOMER P.O. NUMBER <b>3258</b>	BUYER <b>MR. FRED JOHNSON</b>
		SCHEDULED SHIP DATE <b>7/28/11</b>	

MARKS

**PO# 4500104795**

SHIP VIA <b>Dayton/Estes/USF Holland</b>				REPRESENTATIVE <b>TODD AIR SOLUTIONS</b>				REP. ORDER NO. <b>CFQ# 183536</b>		SHIPPING CHARGES <b>Prepaid &amp; Add</b>		
QTY. <b>1</b>	DESCRIPTION <b>HEAVY DUTY BI BLOWER</b>				MODEL <b>HDBI-270</b>	ROT <b>CW</b>	DISCH <b>BH</b>	ARR <b>4HM</b>	WHEEL/PROP <b>SQBI 100%</b>	INLET		
MOTOR DATA	HP <b>30</b>	RPM <b>1750</b>	PH <b>3</b>	CYCLE <b>60</b>	VOLTAGE <b>230/460V</b>	FRAME <b>286T</b>	ENCLOSURE <b>TEFC</b>	SUPPLIED BY <b>CFV</b>	INSTALLED BY <b>CFV</b>			
	CFV MOTOR PART NUMBER <b>3772005S</b>								GROOVES	FXD/ADJ	BELT	
FAN DATA	DENSITY <b>.075</b>	TEMP. <b>70°F.</b>	ALTITUDE	CFM <b>12000</b>	SP <b>10.000</b>	RPM <b>1750</b>	BHP <b>26.600</b>	MOTOR SHEAVE		BUSHING		
AT OPERATING CONDITIONS												
MOTOR VENDOR MODEL NUMBER <b>1LE22212CB216AA3</b>									FAN SHEAVE		BUSHING	

**Record Print, 2D CAD Drawings**

**Complete Motor Description:**

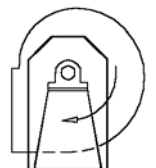
**MTR,30 HP,1750 RPM,3PH,60Hz,230/460V,TEFC,Prem Eff,FM,286T,1.15 SF,F Insul., 40C Amb.,Sealed Bearings,F1 Box,Cast Iron Frame,GP100 TYPE,Siemens**

**Maximum allowable wheel speed at 70°F is 2493 RPM**

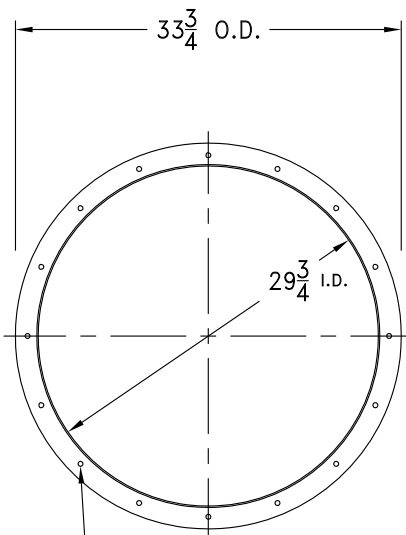
- CLASS III WHEEL CONSTRUCTION**
- MANUAL CONTROLLED OPPOSED BLADE DISCHARGE DAMPER**
- DRILL DISCHARGE FLANGE STANDARD**
- DRILL INLET FLANGE STANDARD BOLT CIRCLE ON-CENTERS**
- QUICK OPEN INSPECTION DOOR AT 3 O'CLOCK**
- TEFLON SHAFT SEAL**

**Estimated Shipping Weight: 1209 pounds**

**Submittal Email: [bvenezia@avanienvironmental.com](mailto:bvenezia@avanienvironmental.com)**

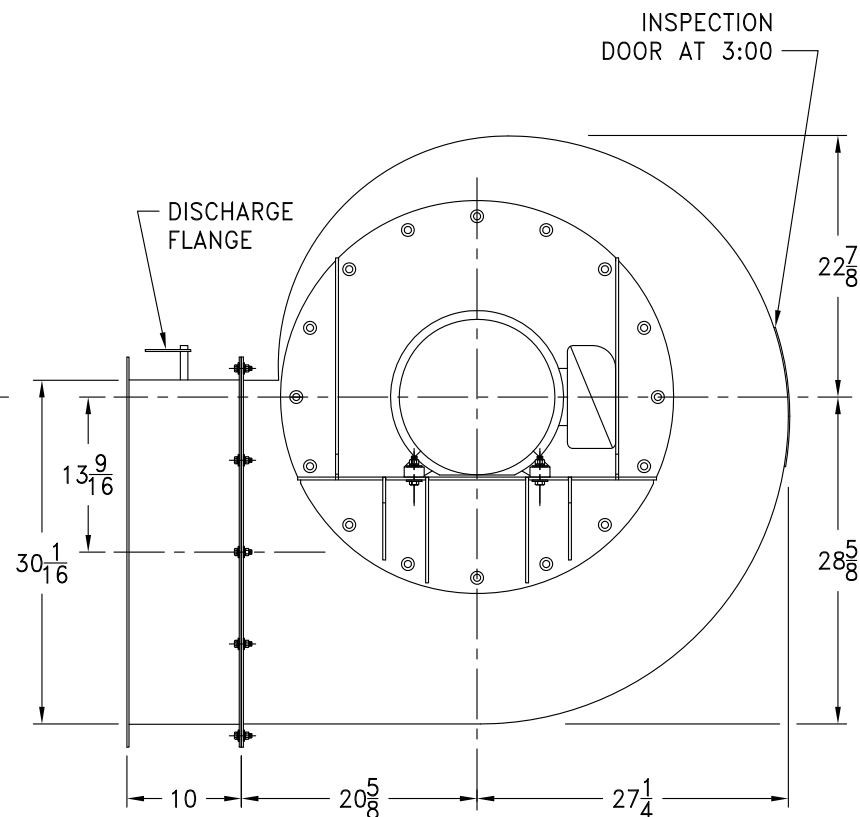
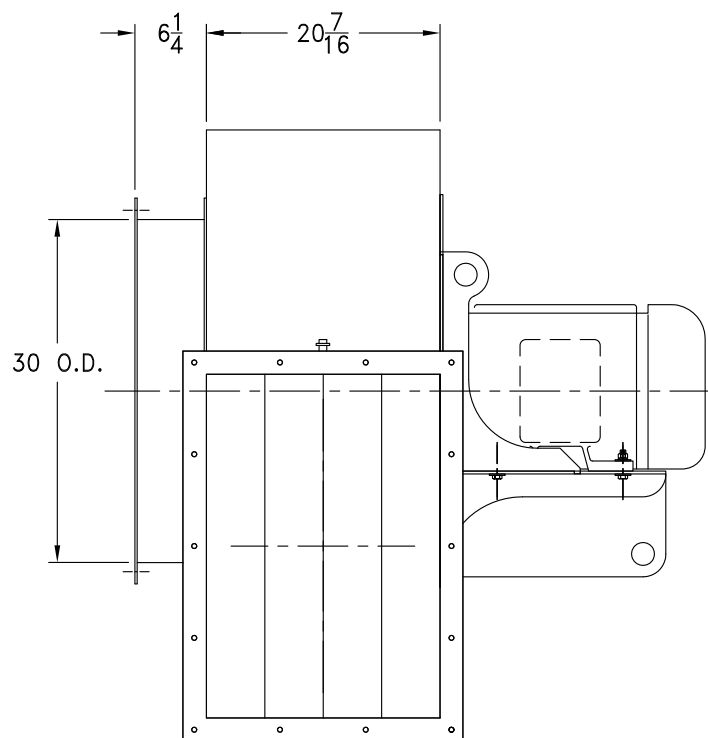


**CW BH**



(16) 7/16 DIA. HOLES  
ON A 31-5/8 B.C.


INLET FLANGE

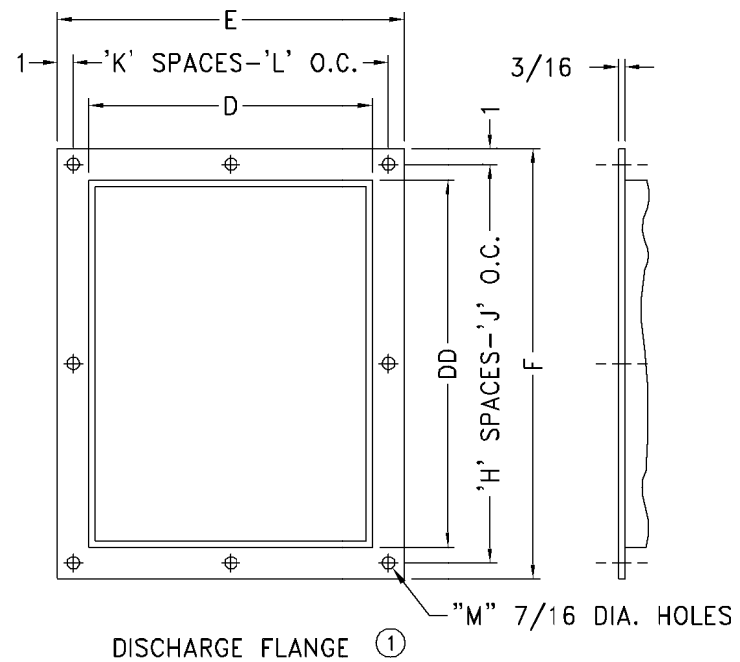
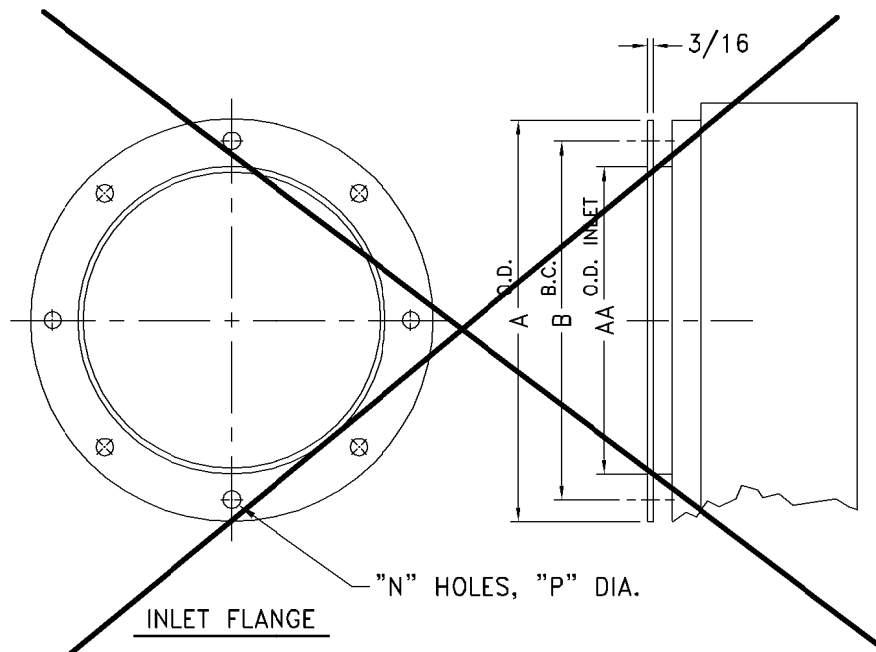


CW ROTATION, BOTTOM HORIZONTAL DISCHARGE SHOWN

NOTES:

1. MOTOR: 30 HP, 1750 RPM, 286T FRAME, TEFC.
2. SEE DWG. A27205 FOR DISCHARGE FLANGE DETAIL.
3. SEE DWG. A17110 FOR DISCHARGE DAMPER DETAIL.
4. CLASS III WHEEL CONSTRUCTION.
5. TEFLON SHAFT SEAL.

				SUPERSEDES:		TOLERANCES: FRACTIONS ± 1/8 ANGLES: ± 1° DECIMALS: X.XXX = ±0.005 X.XX = ±0.060 X.X = ±0.120		SCALE: FULL IN CAD		 <b>cincinnati fan</b> 7697 SNIDER ROAD MASON, OHIO 45040	
				SIMILAR TO:		ALL DIMENSIONS IN INCHES UNLESS OTHERWISE SPECIFIED		DATE: 07/08/11			
								DR. BY: JH			
								CHK. BY:			
NO.	DESCRIPTION	DATE	INITIALS	CERTIFIED		MATERIAL:		ASSEMBLY		DRAWING NO.	
REVISIONS										A	
										1108456	
										SHEET 1 of 1	
										REV.	

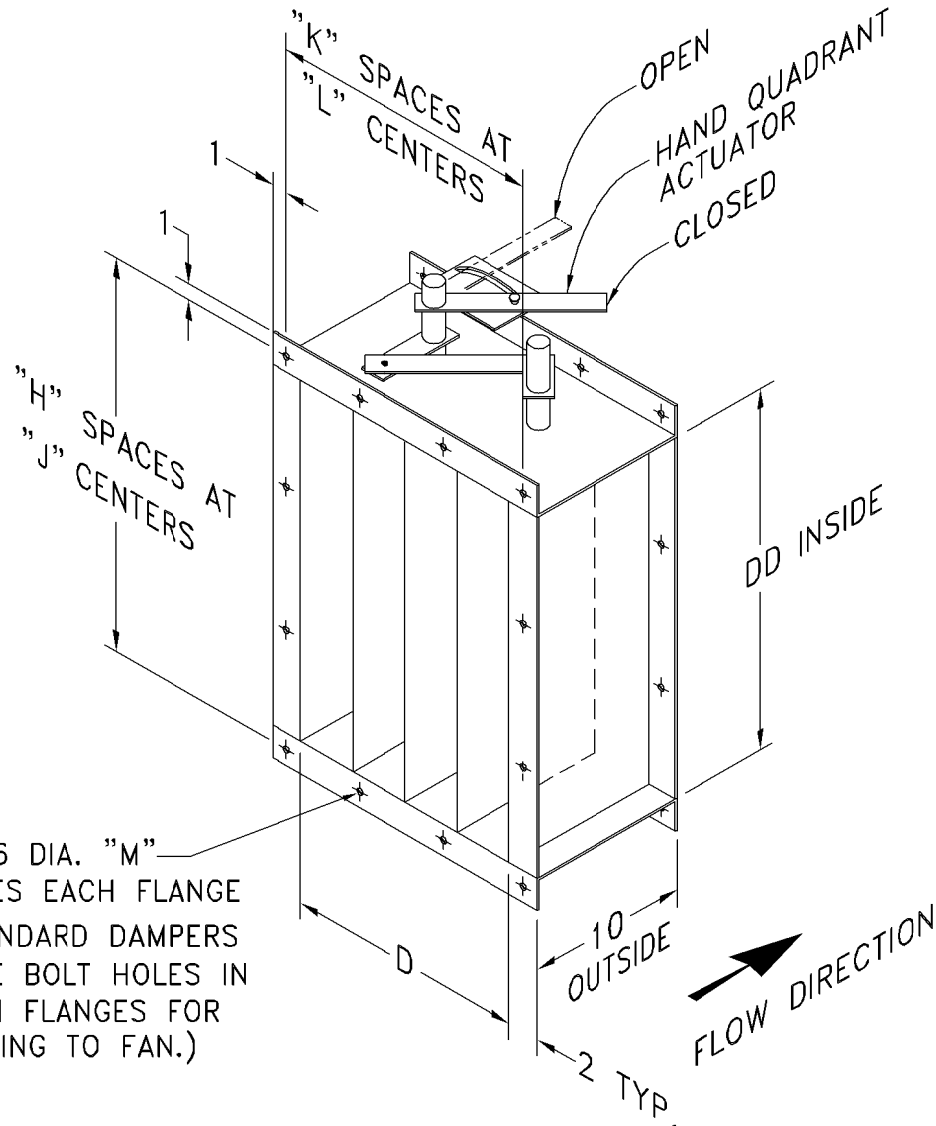


INLET					
SIZE	A O.D.	B B.C.	N	AA DIA.	P
120	16	14-3/8	8	13-1/4	7/16
130	17-3/4	15-15/16	8	14-5/8	7/16
150	19-1/4	17-1/2	8	16-1/8	7/16
160	21-1/8	19-3/8	8	18	7/16
180	23-1/2	21-1/2	12	20	7/16
200	25-1/2	23-1/2	12	22	7/16
220	28-1/8	26-1/8	12	24-5/8	7/16
240	30-3/4	28-3/4	16	27	7/16
270	33-3/4	31-5/8	16	30	7/16
300	37-1/4	35-1/4	16	33-1/2	7/16
330	40-3/8	38-3/4	16	36-3/4	1/2
360	43-5/8	42	16	40	1/2

DISCHARGE								
D	E	F	H	J	K	L	M	DD
9-3/8	13-3/8	17-11/16	2	7-27/32	2	5-11/16	8	13-3/4
10-3/8	14-3/8	19-3/16	2	8-19/32	2	6-3/16	8	15-1/4
11-3/8	15-3/8	20-3/4	3	6-1/4	2	6-11/16	10	16-13/16
12-1/2	16-1/2	22-7/16	3	6-13/16	2	7-1/4	10	18-7/16
13-7/8	17-7/8	24-1/2	3	7-1/2	2	7-15/16	10	20-3/8
15-1/4	19-1/4	26-3/8	3	8-1/8	3	5-3/4	12	22-3/8
16-7/8	20-15/16	28-7/8	4	6-23/32	3	6-5/16	14	24-7/8
18-9/16	22-5/8	31-3/8	4	7-11/32	3	6-7/8	14	27-3/8
20-7/16	24-1/2	34-1/8	4	8-1/32	3	7-1/2	14	30-1/16
22-3/4	26-3/4	37-5/8	5	7-1/8	3	8-1/4	16	33-9/16
24-7/8	28-7/8	40-7/8	7	5-9/16	5	5-3/8	24	36-3/4
27-1/4	31-1/4	44-1/4	7	6-1/32	5	5-27/32	24	40-1/4

NOTE:

① NOT AVAILABLE ON ANY MODEL FOR DOWNBLAST, BOTTOM ANGULAR DOWN OR TOP ANGULAR DOWN DISCHARGE POSITIONS.  
DISCHARGE FLANGE IS STANDARD ON SIZES -270 THRU -360.



SIZE	D	DD	H	J	K	L	M
120	9-3/8	13-11/16	2	7-27/32	2	5-11/16	8
130	10-3/8	15-3/16		8-19/32		6-3/16	
150	11-3/8	16-3/4	3	6-1/4	2	6-11/16	10
160	12-1/2	18-3/8		6-13/16		7-1/4	
180	13-7/8	20-3/8		7-1/2		7-15/16	
200	15-1/4	22-3/8	4	8-1/8	3	5-3/4	12
220	16-15/16	24-7/8		6-23/32		6-5/16	
240	18-5/8	27-3/8	5	7-11/32	3	6-7/8	14
<del>270</del>	20-1/2	30-1/8		8-1/32		7-1/2	
300	22-3/4	33-9/16	7	7-1/8	5	8-1/4	16
330	24-7/8	36-7/8		5-9/16		5-3/8	
360	27-1/4	40-1/4		6-1/32		5-27/32	

\* HOLES PER FLANGE.

7/16 DIA. "M"  
HOLES EACH FLANGE  
(STANDARD DAMPERS  
HAVE BOLT HOLES IN  
BOTH FLANGES FOR  
BOLTING TO FAN.)

- NOTES:
1. OPPOSED BLADE IS STANDARD.  PARALLEL BLADE IS OPTIONAL.
  2. DAMPER BLADES WILL BE PERPENDICULAR TO FAN SHAFT.
  3. STANDARD MATERIAL IS CARBON STEEL WITH RUST INHIBITING PRIMER.  OPTIONAL MATERIAL \_\_\_\_\_.
  4. STANDARD CONSTRUCTION MAX. TEMPERATURE: 300° F.  
 OPTIONAL HIGH TEMPERATURE CONSTRUCTION MAX. TEMPERATURE: 800° F.

