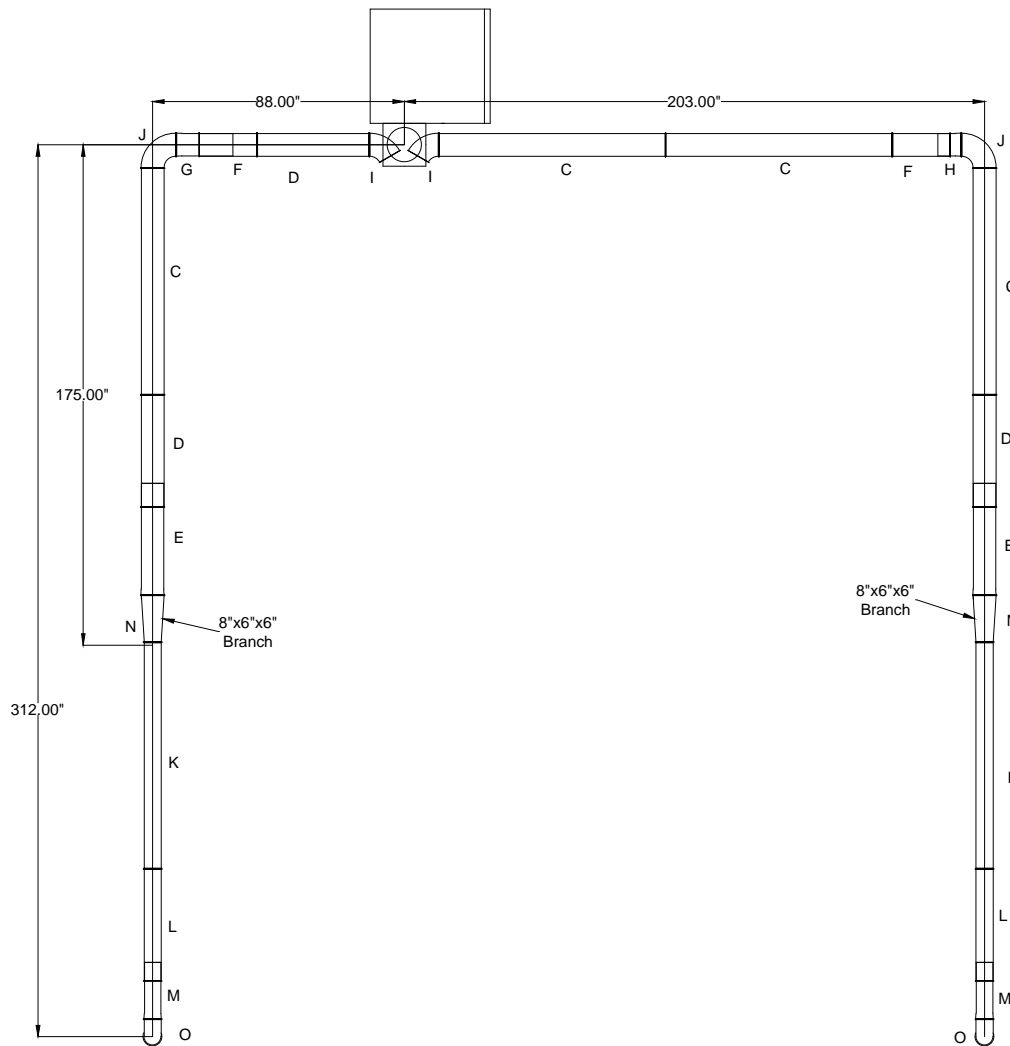


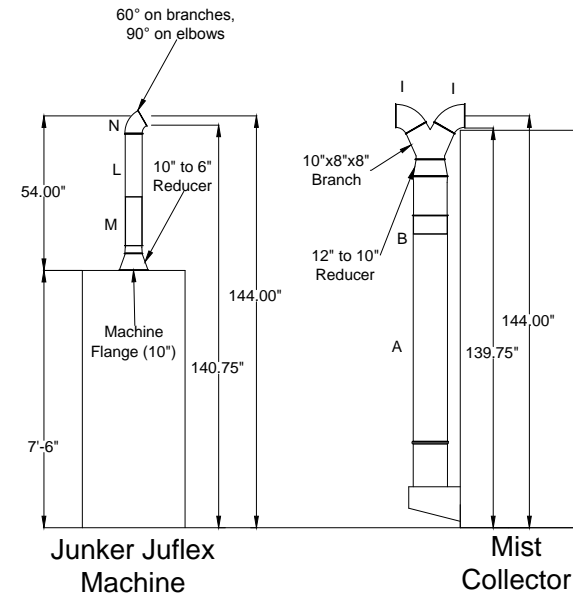
ThyssenKrupp SO#19001 GL20 & GL11 to Collector

- A=12" dia. 2000mm tube
- B=12" dia. 500mm slip tube
- C=8" dia. 2000mm tube
- D=8" dia. 1000mm tube
- E=8" dia. 1000mm slip tube
- F=8" dia. 500mm tube
- G=8" dia. 500mm slip tube
- H=8" dia. 200mm slip tube
- I=8" dia. 60 deg elbow
- J=8" dia. 90 deg elbow
- K=6" dia. 2000mm tube
- L=6" dia. 1000mm tube
- M=6" dia. 500mm slip tube
- N=6" dia. 60 deg elbow
- O=6" dia. 90 deg elbow

- Notes:
1. All duct Jacobs Tubing
 2. Will hang from ceiling via gripples
 3. Machine inlets 10", will reduce to 6" to efficiently remove mist



Plan View



Elevation View

Avani Environmental Intl. Inc.
95 Cypress Drive
Youngsville, NC 27596
P# 919-570-2862 F# 919-570-2863

Avani

| | |
|----------------------------------|---------------|
| Project: ThyssenKrupp SO#19001 | |
| Drawing: GL20 & GL11 Duct Layout | |
| Date: 10-4-12 | Drawn by: MDT |
| Sheet No: 1 OF 1 | Rev 1 |