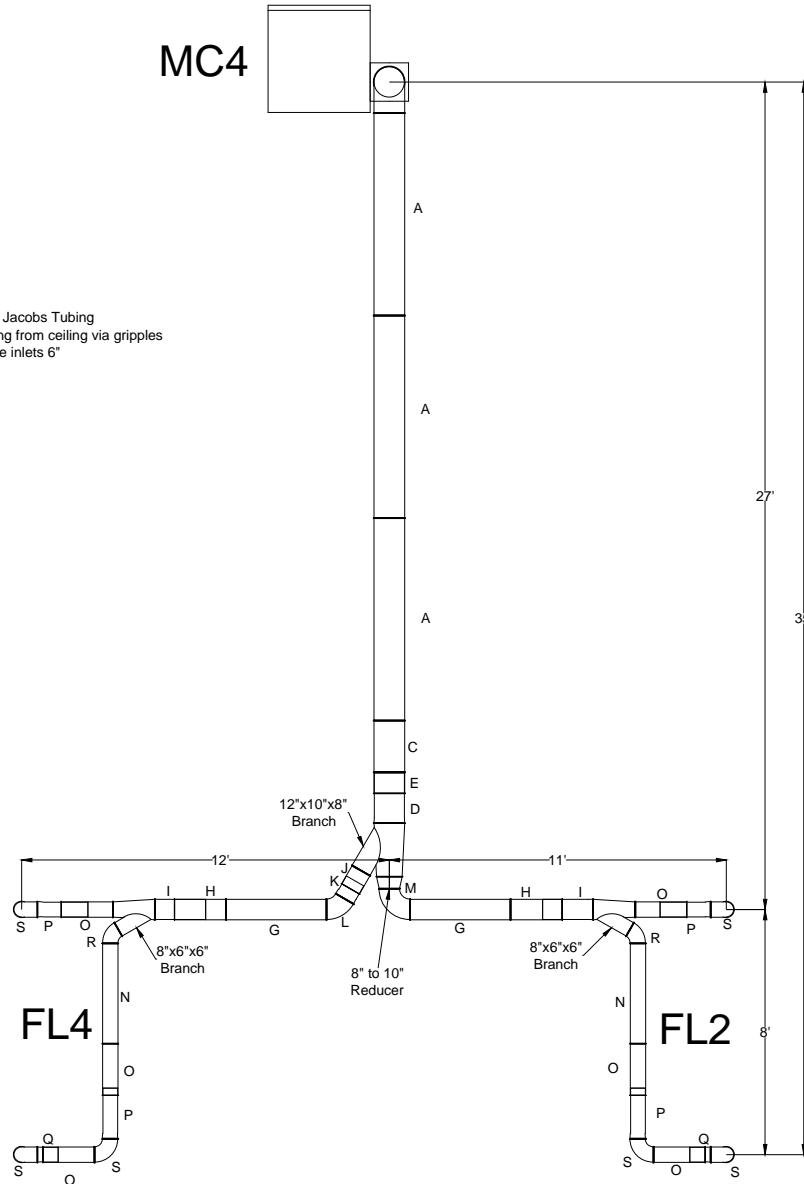


ThyssenKrupp SO#18629

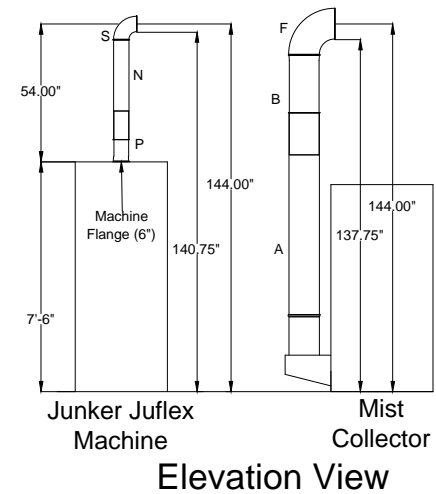
FL2 & FL4 to MC4

- Notes:
1. All duct Jacobs Tubing
 2. Will hang from ceiling via gripples
 3. Machine inlets 6"

- A=12" dia. 2000mm tube
- B=12" dia. 1000mm slip tube
- C=12" dia. 500mm tube
- D=12" dia. 500mm slip tube
- E=12" dia. 200mm tube
- F=12" dia. 90 deg elbow
- G=8" dia. 1000mm tube
- H=8" dia. 500mm tube
- I=8" dia. 500mm slip tube
- J=8" dia. 200mm tube
- K=8" dia. 200mm slip tube
- L=8" dia. 60 deg elbow
- M=8" dia. 90 deg elbow
- N=6" dia. 1000mm tube
- O=6" dia. 500mm tube
- P=6" dia. 500mm slip tube
- Q=6" dia. 200mm slip tube
- R=6" dia. 60 deg elbow
- S=6" dia. 90 deg elbow



Plan View



Junker Juflex Machine
Elevation View
Mist Collector

Avani Environmental Intl. Inc.
95 Cypress Drive
Youngsville, NC 27596
P# 919-570-2862 F# 919-570-2863

Avani

Project: ThyssenKrupp SO#18629

Drawing: FL2 & FL4 Duct Layout

Date: 10-1-12

Drawn by: MDT

Sheet No: 1 OF 1