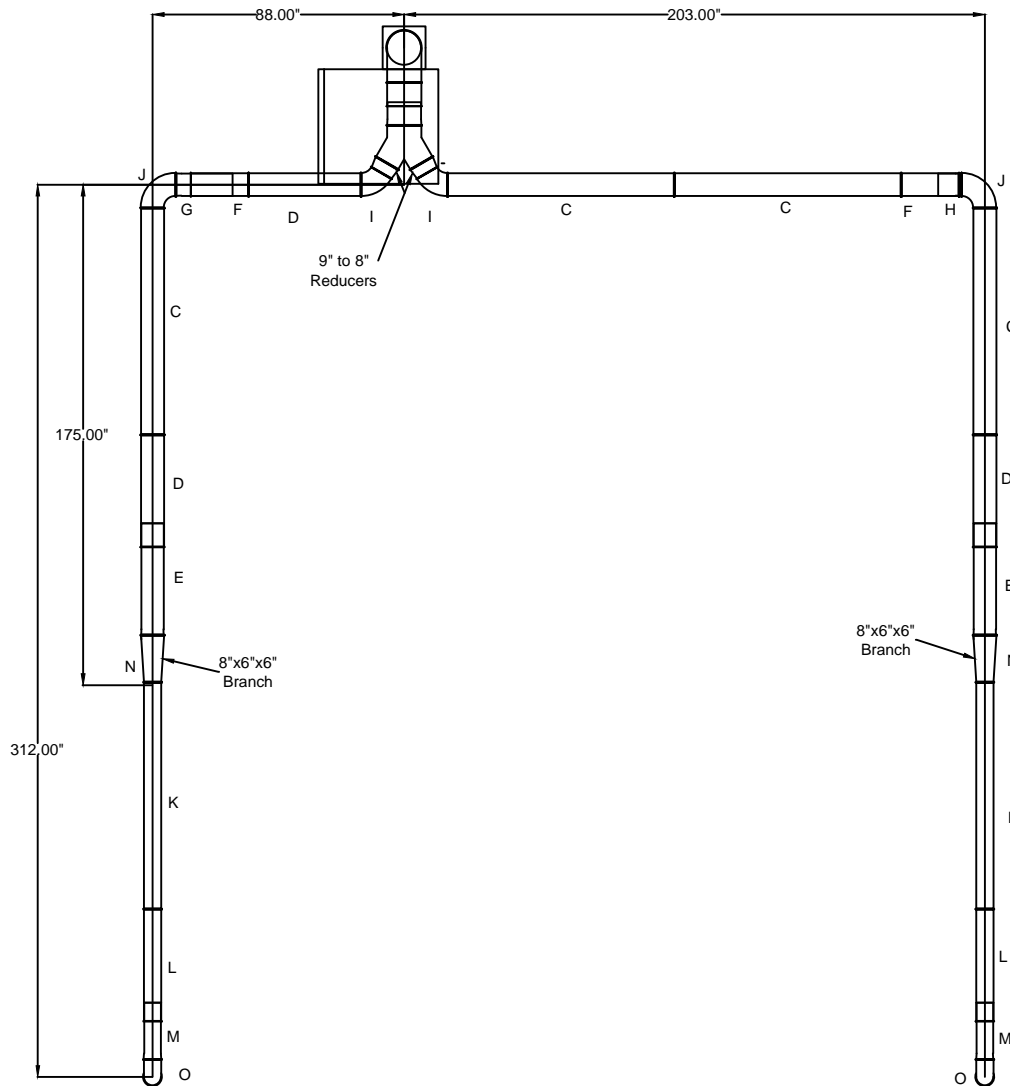


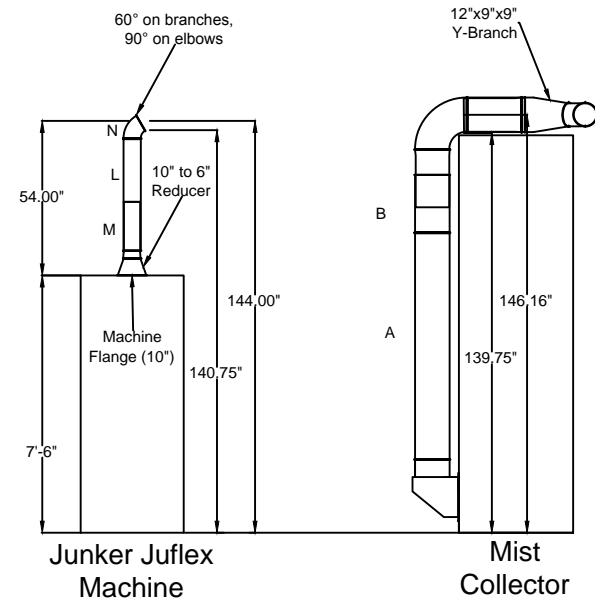
# ThyssenKrupp GL20 & GL11 to Collector

- A=12" dia. 2000mm tube
- B=12" dia. 500mm slip tube
- C=8" dia. 2000mm tube
- D=8" dia. 1000mm tube
- E=8" dia. 1000mm slip tube
- F=8" dia. 500mm tube
- G=8" dia. 500mm slip tube
- H=8" dia. 200mm slip tube
- I=8" dia. 60 deg elbow
- J=8" dia. 90 deg elbow
- K=6" dia. 2000mm tube
- L=6" dia. 1000mm tube
- M=6" dia. 500mm slip tube
- N=6" dia. 60 deg elbow
- O=6" dia. 90 deg elbow

- Notes:
1. All duct Jacobs Tubing
  2. Will hang from ceiling via gripples
  3. Machine inlets 10", will reduce to 6" to efficiently remove mist



Plan View



Elevation View

PRELIMINARY

This product has not been tested for seismic calculations.

Avani Environmental Intl. Inc.  
95 Cypress Drive  
Youngsville, NC 27596  
P# 919-570-2862 F# 919-570-2863

**Avani**

Project: ThyssenKrupp	
Drawing: GL20 & GL11 Duct Layout	
Date: 4/7/15	Drawn by: DJT
Sheet No: 1 OF 1	Rev 1