

REVISIONS:

No.	Description	Date
1	OSE REVIEW SET	07-08-2014
2	ISSUE FOR BID	09-12-2014
3	ISSUE FOR BID, REVISED	10-28-2014

PROJECT: 3202-131890  
DATE: 10/28/2014  
DRAWN BY: GTH  
CHECKED BY: CRB

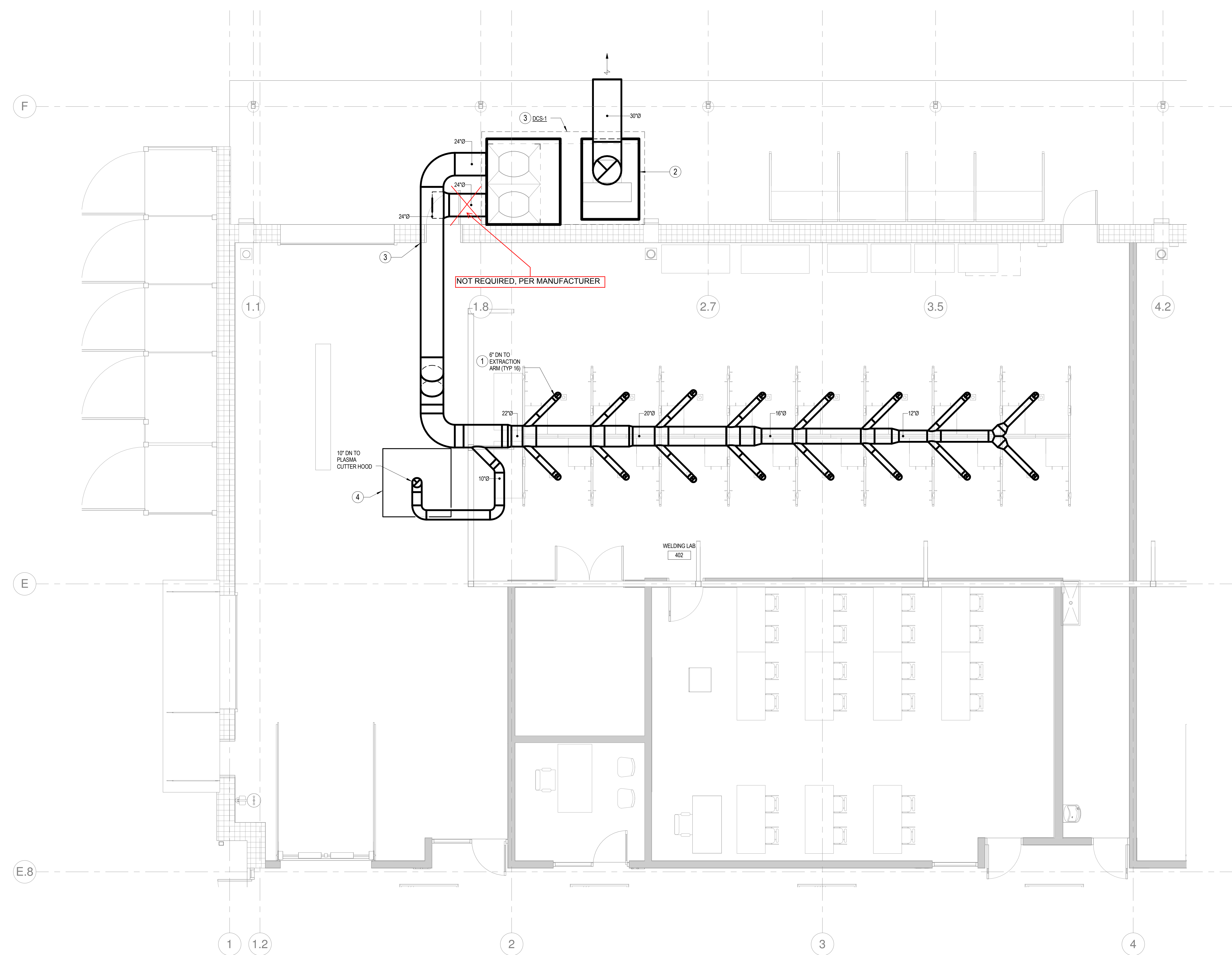
**DUST  
COLLECTOR  
DUCTWORK  
PLAN**

**MO-101**

ISSUE FOR BID

**DRAWING NOTES**

- 1 ALL WELDING EXTRACTOR ARMS SHALL BE MOUNTED 10'-0" AFF.
- 2 DUST COLLECTOR VENDOR SHALL MAKE FINAL ELECTRICAL CONNECTION FROM EQUIPMENT TO ELECTRICAL DISCONNECT LOCATED ON EXTERIOR WALL.
- 3 DUST COLLECTOR VENDOR SHALL COORDINATE DUCT ROUTING WITH WALL OPENING.
- 4 30"x48" PLASMA CUTTER HOOD, SIZED FOR 2,000 CFM.  
HOOD TO BE MOUNTED AT 7'-0" A.F.F.



**DUST COLLECTION SYSTEM**  
SCALE: 1/4" = 1'-0"

