

DO NOT SCALE

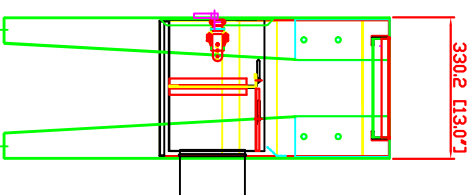
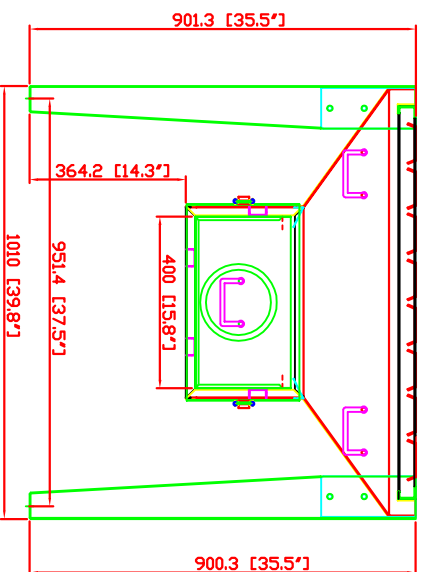
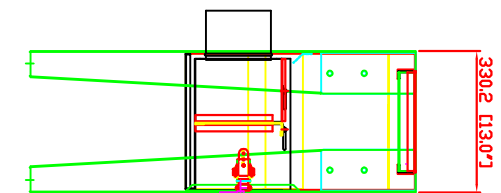
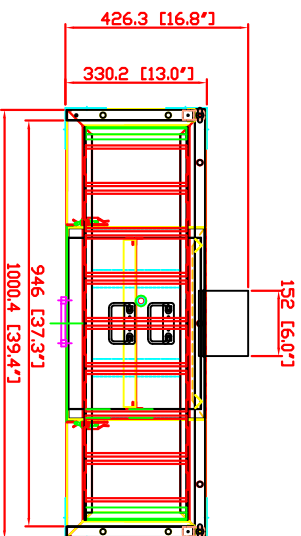
IF IN DOUBT ASK



| Revisions | | |
|-----------|-------------|------|
| Rev | Description | Date |
| | | |
| | | |

- SDT-180 DOWNDRAFT TABLE SPECIFICATION -

- motor: NIL.
- dimensions: 39.8" L x 13"D x 52.1"H
- cabinet: 12-16 Gauge
- full grated top: 36.1"W x 20.4"D
- 3 single wall: removable sheet metal sides/back
- *** outlet: dia. 6"
- paint color: powder coated Blue
- *** grated table top with 16mm fixture holes



PRELIMINARY

| | | | | | | | |
|--|--|------------|--|--------------|--|-----------------|--|
| AVANI ENVIRONMENTAL INTL. INC. Sales Department | | Date | | Part Number: | | Title: | |
| 95 Cypress Drive | | 2015-07-15 | | REVISION B | | SDT-180 | |
| (919) 570-2862 | | *** | | | | Drawing Number: | |
| Youngsville, NC 27596 | | | | | | SDT-180 | |
| Info@avanienvironmental.com | | | | | | | |
| The drawings, AutoCAD, 3-D Models, and specifications are the property of Avani Environmental Intl. Inc. (AE) and may not be reproduced, distributed, modified, or otherwise used, except provided herein, without the express written permission of AE. | | | | Size | | Scale | |
| | | | | C | | 1 = 20 | |