

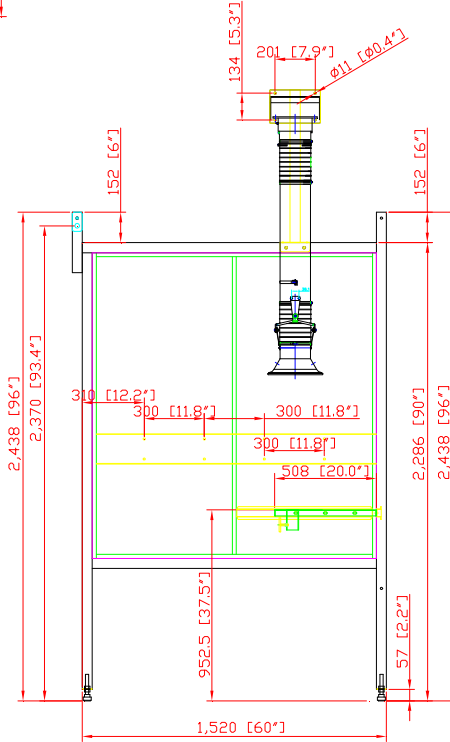
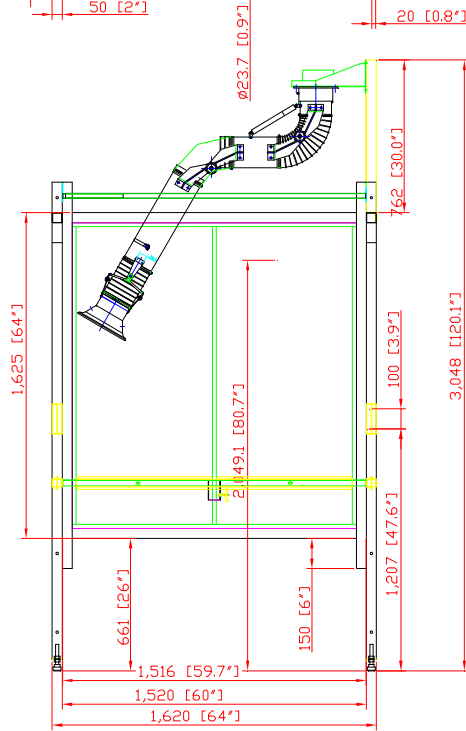
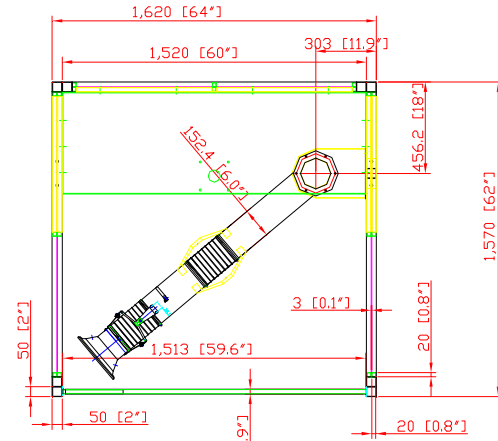
Revisions			
Rev	Description	Date	Approved

**WB-1055 ECO WELDING BOOTH SPECIFICATIONS**

- Adjustable Level System: (4) dia. 2.36" Feet
- Panel Construction: 11-gauge welded steel
- Welding Curtain Supports: (1) set welding curtain bar
- Fume Arm Supports & Brackets: (1) bracket (6 bolt pattern) to match optional dia. 6" fume arm
- Powder Coated: Avani Safety Blue Standard (custom colors available)
- Three Piece Configuration: (2) side panels, (1) back panel.
- Booths can be mounted back-to-back, side-by-side or both options
- \*\*\*Unadjustable Fixed Rear Shelf: 60"W x 20"D x 1.1"H (solid with 2" hole drilled)

**OPTIONS**

- Welded Nuts: Optional locations for J-Hooks
- Welding Nuts: For wire feeder or welder bracket



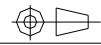
AVANI ENVIRONMENTAL INTL. INC. Sales Department  
 95 Cypress Drive  
 Youngsville, NC 27596  
 (919) 570-2862  
 info@avanienvironmental.com

Drawn by:	Date:	Name:	Part Number:	Title:
Checked by:	2011-07-02	***	***	ECO Booth WB-1055
The drawings, AutoCAD, 3-D Models, and specifications are the property of Avani Environmental Intl. Inc. (AE) and may not be reproduced, distributed, modified, or otherwise used, except provided herein, without the express written permission of AE.				Size: A

Scale:	Drawing Number:
1 = 25	WB-5x5S

DO NOT SCALE

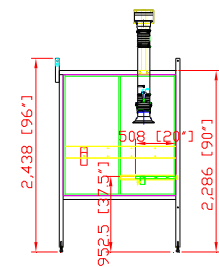
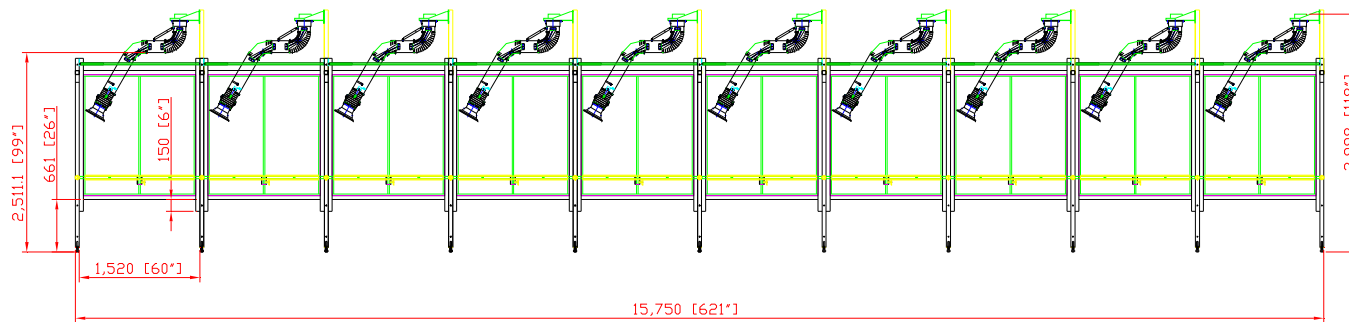
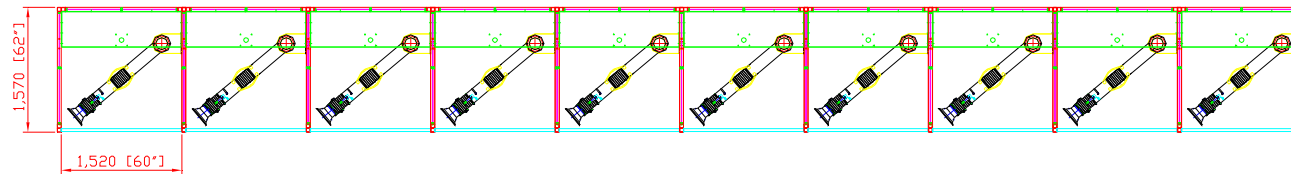
IF IN DOUBT ASK



Revisions			
Rev	Description	Date	Approved

(10) WB-1055 side-by-side  
 - each booth with (1) arm 1620 and (1) BR 006

**SouthCoast,**  
**CA 91911**  
 po# 4347



PO# 4347 item ordered:  
 - WB-1055 (10)  
 - ARM 1620 (10)  
 - BR 006 (10)

AVANI ENVIRONMENTAL INTL. INC. Sales Department  
 95 Cypress Drive  
 Youngsville, NC 27596  
 (919) 570-2862  
 info@avanienvironmental.com

	Date	Name	Part Number:	Title:
Drawn by:	2012-03-22	***	WB-1055 (10)	SouthCoast Welding and Manufacturing
Checked by:			ARM 1620 (10)	
The drawings, AutoCAD, 3-D Models, and specifications are the property of Avani Environmental Intl. Inc. (AE) and may not be reproduced, distributed, modified, or otherwise used, except provided herein, without the express written permission of AE.				Drawing Number:

Size  
**A**

Scale  
1 = 35

Drawing Number:  
\*\*