

DO NOT SCALE

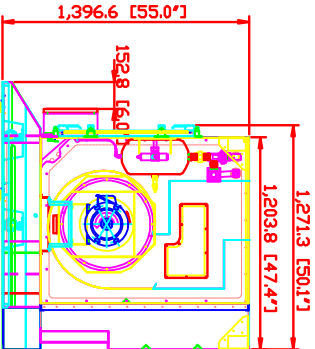
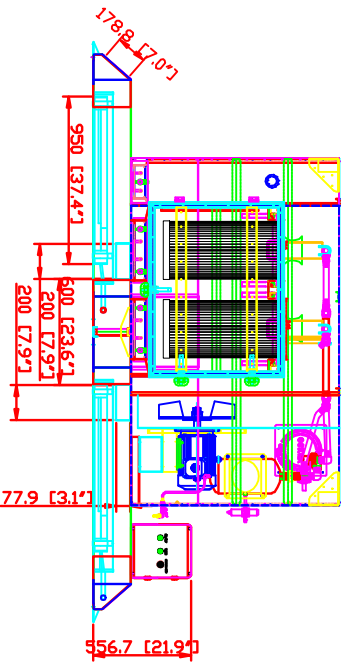
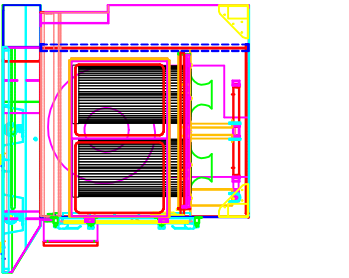
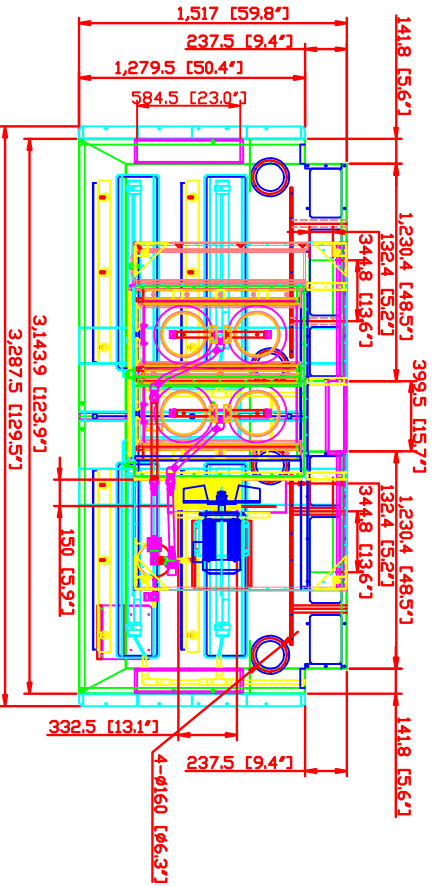
IF IN DOUBT ASK



Rev	Description	Date	Approved

### SDC-B-7-4 dust collector on booth top SPECIFICATIONS for SHEPPARD

Motor:	7.5 HP TERC
Airflow:	2460 g3/min 4177 m3/hr
Filteration Stages:	1st - aluminum mesh x (2) pos Spec: 540 x 440 x 22mm 2nd - cartridge filter x (4) pos Spec: Dia. 325 x 600mm (12.8" x 23.6") Filtering area: 10M2 x 4 = 40M2 (430 FT2)
Polyester spun bond:	Polyester with TEFLOM treatment & coating
Air-to-Cloth Spun Bond:	4.65
Air-to-Cloth (80/20 Ft):	2.37 (optional filter media)
No. of Valves:	2
Compressed Air Requirement:	90 PSI
Compressed Air Reservoir:	2.76 gallon
Outside Opening:	5.9" x 13.1"
Dimensions:	328.75 x 151.7 x 139.66 cm (129.5 x 59.4x 55 in)
Construction:	16 gauge steel / 1.6 mm
Max. Operating Temp.:	120°C
Paint Color:	Blue
Control Box:	- Individual UL Certified Control Box (ex dust collector); ON/OFF, Timer, Emergency Stop - Control Panel (at booth) - ON/OFF, manual air pulsing jet cleaning button, air pulsing jet cleaning mode (only at right booth when facing the unit), emergency stop



OSKAR ENVIRONMENTAL, INC.  
95 Cypress Drive  
Youngsville, NC 27596

Sales Department  
(919) 570-2862  
sales@oskarsales.com

Date	Name	Part Number:	Title:
Drawn by: 2010-04-07	X000X	Sheppard	SDC-B-7-4
Checked by:			

Size	Scale	Drawing Number:
A	1 = 30	***

This drawing is confidential and is the exclusive property of Oskar Environmental. No unauthorized use/copy or disclosure is to be made and it is returned whenever required.