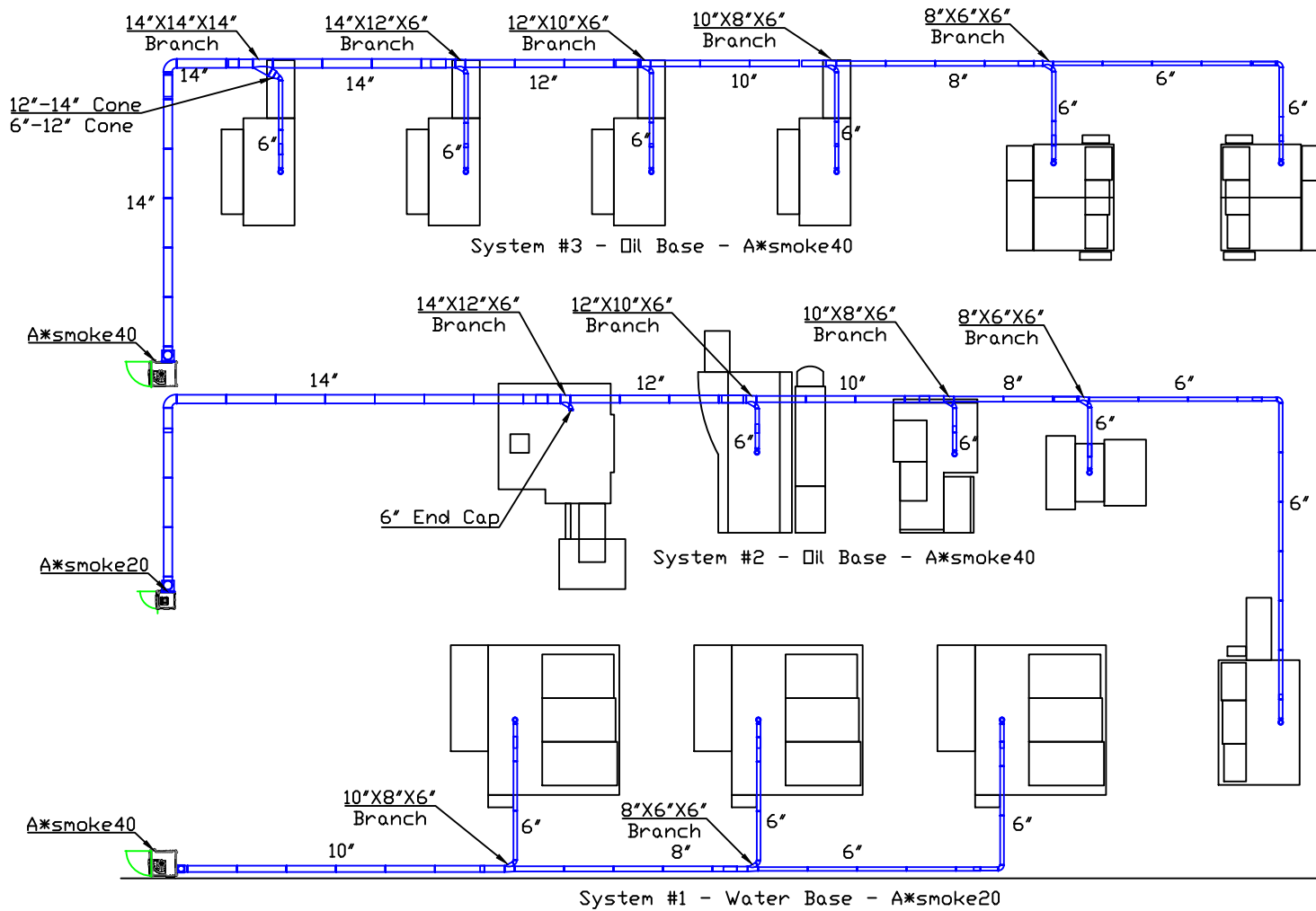


# Schaeffler Mexico



## PRELIMINARY

This product has not been tested for seismic calculations.

Any Customer requested, or caused changes or deviations from the approved drawing that effect T&M will require a change order.

### Notes:

- 1) System #1 - Each drop was an angle flange adapter and butterfly valve
- 2) System #2 - Each drop was an angle flange adapter, fire damper, and butterfly valve
- 3) System #3 - Each drop was an angle flange adapter, fire damper, and butterfly valve

Avani Environmental Intl. Inc.  
95 Cypress Drive  
Youngsville, NC 27596  
P# 919-570-2862 F# 919-570-2863

# Avani

Project: Schaeffler Mexico

Drawing:

Date: 6/9/15

Drawn by: DJT

Sheet No: 1

Rev A