

DO NOT SCALE

IF IN DOUBT ASK



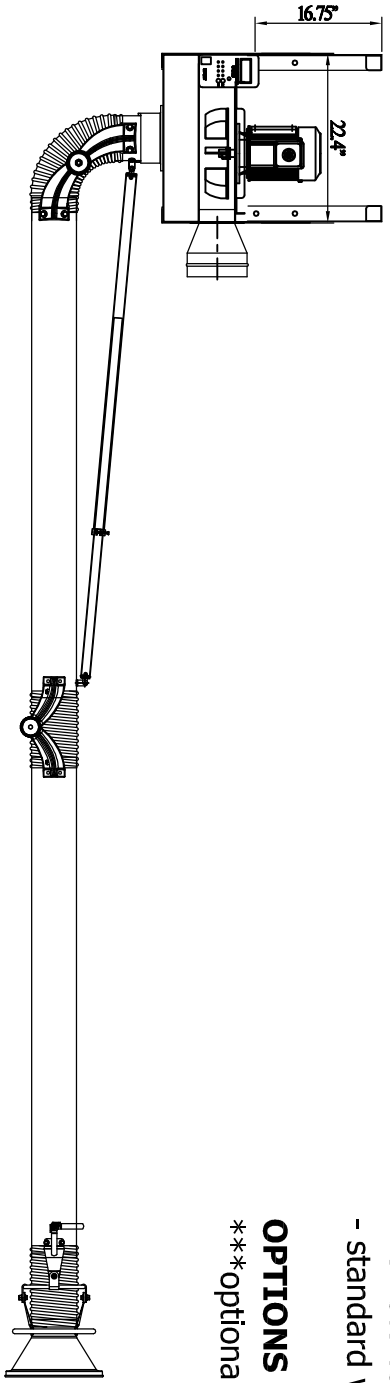
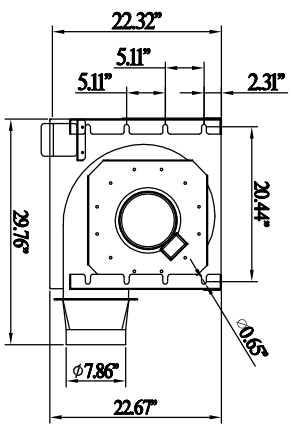
Revisions			
Rev	Description	Date	Approved

**- SB-20640 SPECIFICATION -**

- Direct Drive Blower
  - Motor: 2HP x 1 pc
  - CFM: 1,618 ft3/min
  - Arm Port Size: Inlet dia. 6" x 1 hole  
Outlet dia. 8" x 1 hole
  - Construction: 14 Gauge Steel Cabinet
  - ARM 1640 hanging fume arm: Dia. 6" x 14'L
- Include:
- control panel
  - remote control
  - standard wall-mounting brackets

**OPTIONS**

- \*\*\*optional ceiling-mounting brackets



PRELIMINARY

AVANI ENVIRONMENTAL INTL. INC. Sales Department 95 Cypress Drive Youngsville, NC 27596 (919) 570-2862 info@avanienvironmental.com			
Date	Name	Part Number:	Title:
Drawn by: 2015.04.07	***	REVISION A	SBU-20640 Blower w/arm
Checked by:			
The drawings, AutoCAD, 3-D Models, and specifications are the property of Avani Environmental Intl. Inc. (AE) and may not be reproduced, distributed, modified, or otherwise used, except provided herein, without the express written permission of AE.			
Size	Scale	Drawing Number:	
A	1 = 1	SBU-2 + ARM 1640	