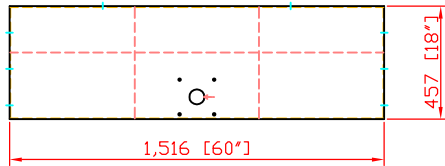
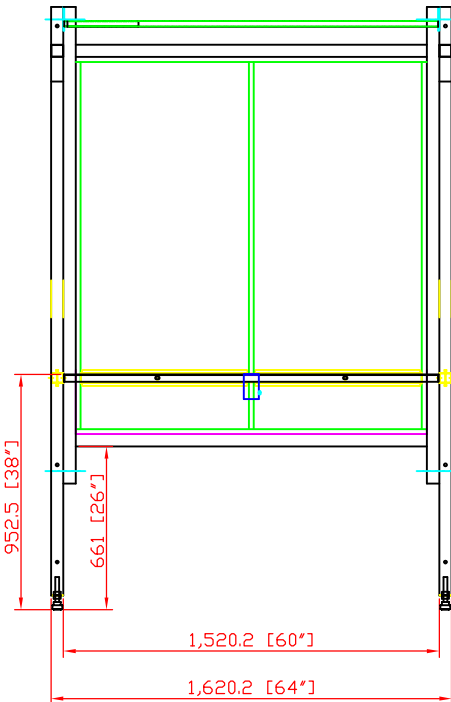
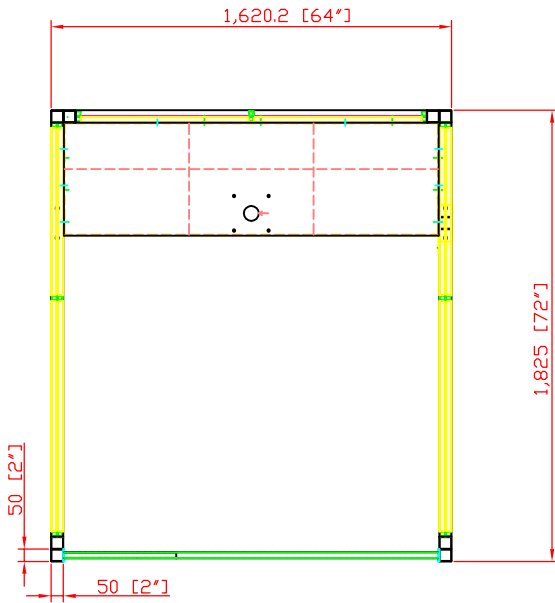




Revisions			
Rev	Description	Date	Approved



Rear shelf



WB-1056 WELDING BOOTH SPECIFICATIONS

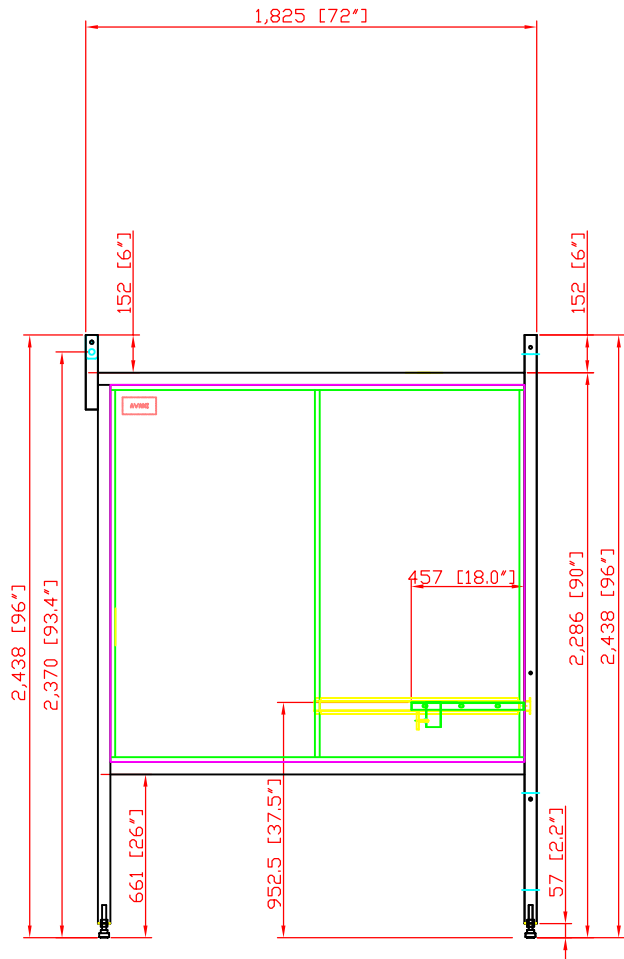
- Dimension: 64" x 72" x 96"
(1,620.2mm x 1,825mm x 2,438mm)
- Adjustable Level System: (4) dia. 2.36" Feet
- Panel Construction: 11-gauge welded steel
- Welding Curtain Supports: (1) set welding curtain bar
- Fume Arm Base Supports: (1) to match an optional bracket (6 bolt pattern) and an optional dia. 6" fume arm
- Powder Coated: Avani Safety Blue Standard (custom colors available)
- Three Piece Configuration: (2) side panels, (1) back panel.
- Booths can be mounted back-to-back, side-by-side or both options
- ***Unadjustable Fixed Rear Shelf: 60"W x 18"D x 1.1"H (solid with 2" hole drilled)

OPTIONS

- Welded Nuts: Optional locations for J-Hooks
- Welding Nuts: For wire feeder or welder bracket

OPTIONAL ACCESSORIES:

- Arm 1620: dia. 6" x 7' hanging arm
- BR 006 bracket 006: mounting bracket for dia. 6" fume arm



Preliminary

AVANI ENVIRONMENTAL INTL. INC. Sales Department
 95 Cypress Drive (919) 570-2862
 Youngsville, NC 27596 info@avanienvironmental.com

Drawn by:	Date	Name	Part Number:	Title:
Checked by:	2015-06-05	XXXXX	REVISION A	WB-1056 Welding booth
The drawings, AutoCAD, 3-D Models, and specifications are the property of Avani Environmental Intl. Inc. (AE) and may not be reproduced, distributed, modified, or otherwise used, except provided herein, without the express written permission of AE			Size	Scale
			A	1 = 1
			Drawing Number: *****	