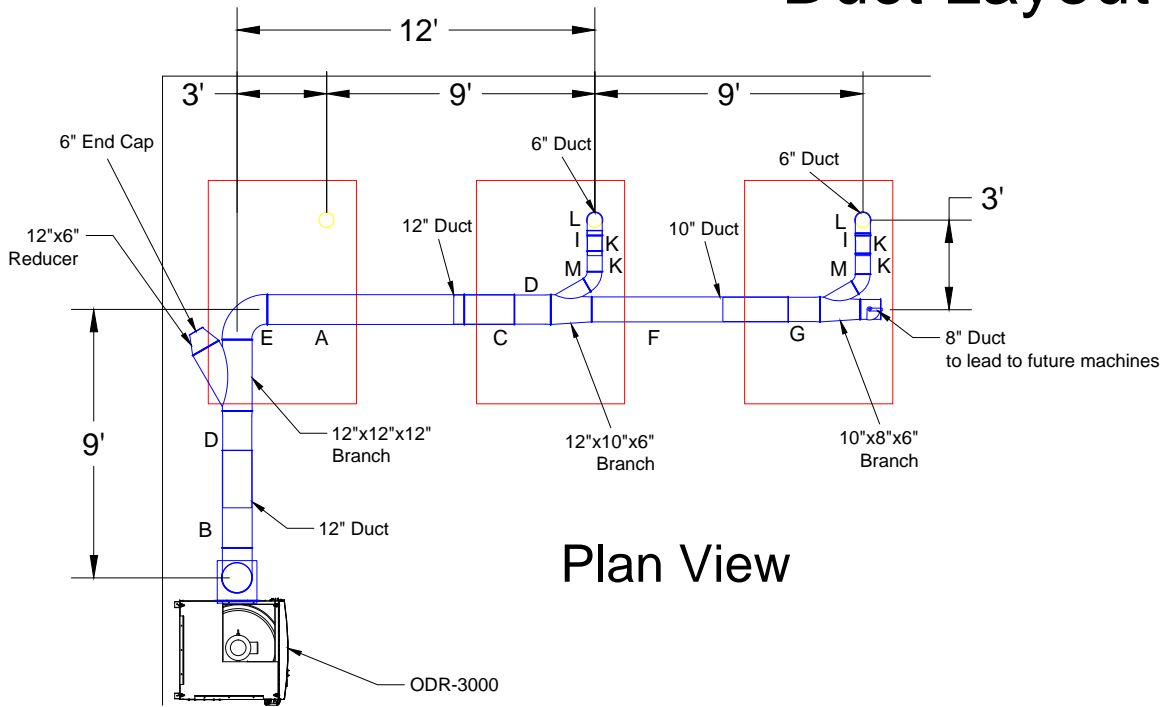
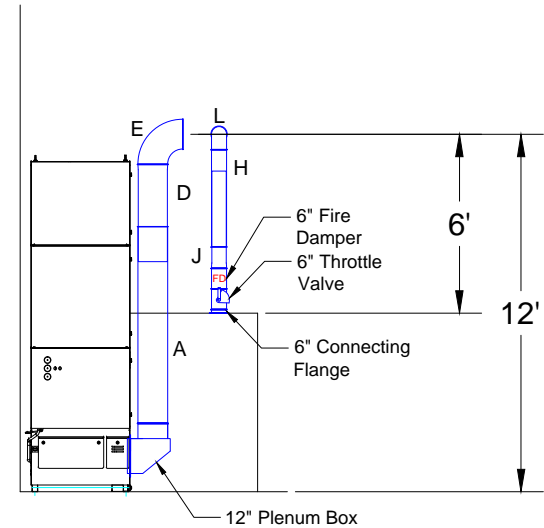


# Petron Automation SO20673

## Duct Layout



Plan View



Elevation View

**Notes:**

- Jacobs Tubing
- Will ship 8" Throttle Valve to bleed in while awaiting other system install

**Duct:**

- |                          |                         |
|--------------------------|-------------------------|
| A. 12" 2000 mm tube      | H. 6" 1000 mm tube      |
| B. 12" 1000 mm tube      | I. 6" 200 mm tube       |
| C. 12" 500 mm tube       | J. 6" 1000 mm slip tube |
| D. 12" 1000 mm slip tube | K. 6" 200 mm slip tube  |
| E. 12" 90° elbow         | L. 6" 90° elbow         |
| F. 10" 2000 mm tube      | M. 6" 60° elbow         |
| G. 10" 1000 mm slip tube |                         |

Avani Environmental Intl.  
 95 Cypress Drive  
 Youngsville, NC 27596  
 P# 919-570-2862 F# 919-570-2863

**Avani**

**Project: Petron Automation SO20673**

**Drawing: Duct Layout**

**Date: 12/9/13**

**Drawn by: MDT**

**Sheet No: 1 of 1**

**Rev.: 1**