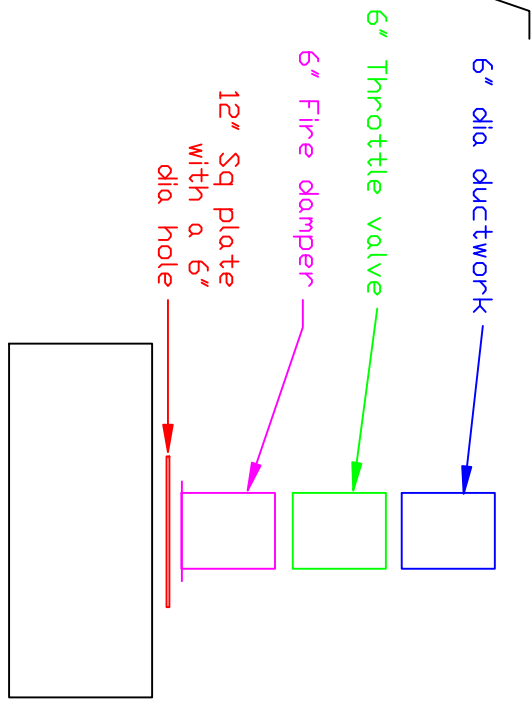
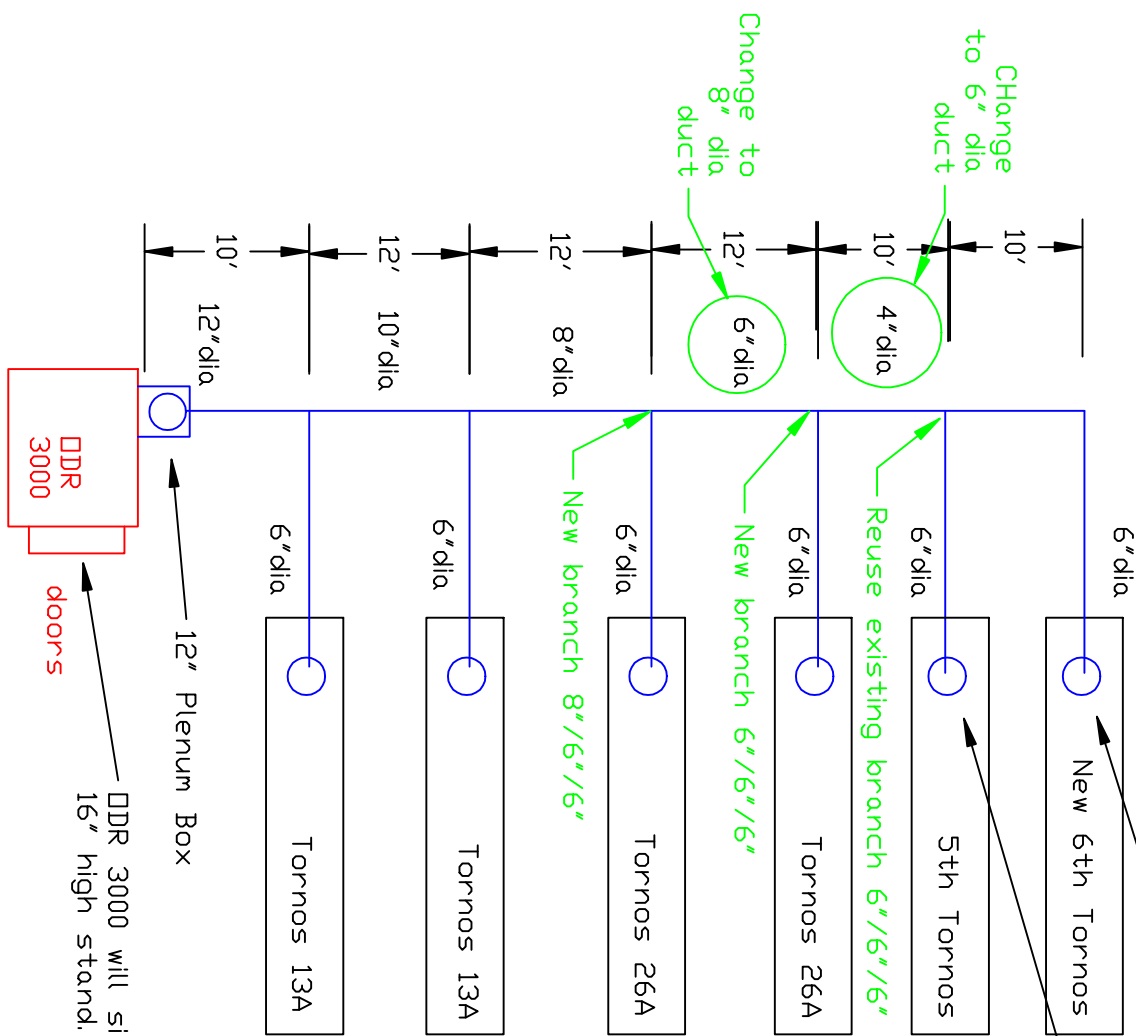


Absolent Ductwork Layout added Tornnos

Plan View Side View
 For the Tornnos machine add a 6" connecting flange to top of unit.



- Notes:
- A) Bottom of duct about 12' off of floor.
 - B) Ceiling height is 17'
 - C) Hang duct from ceiling
 - D) DDR 3000 motor is 460 volts 3 phase. Full load amps at 460volts are 15.

Avanti Environmental 95 Cypress Drive 27596 Raleighville, NC # 919-570-2862 F# 919-570-2863	Avanti
Project: Petron Automation	
Drawing: Revised Layout	
Date: 8/4/11 Drawn by: RAV	
Sheet No:	