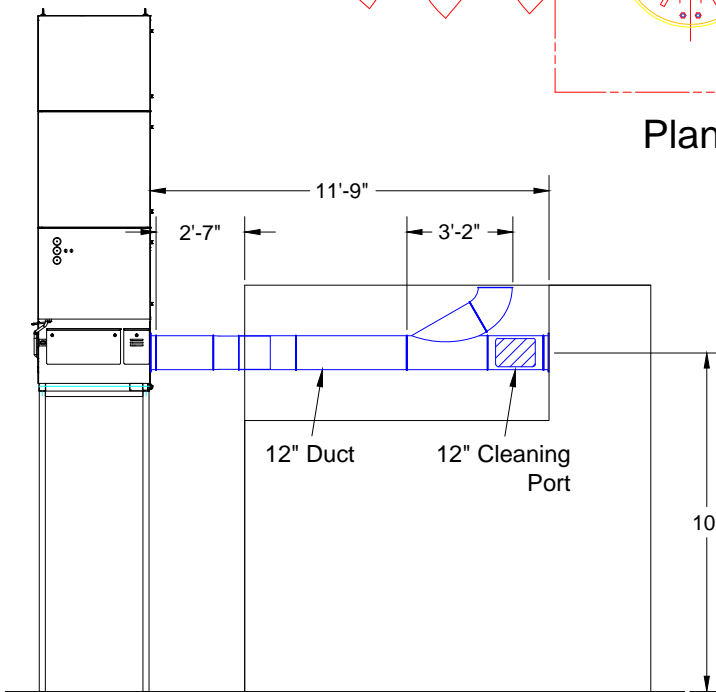
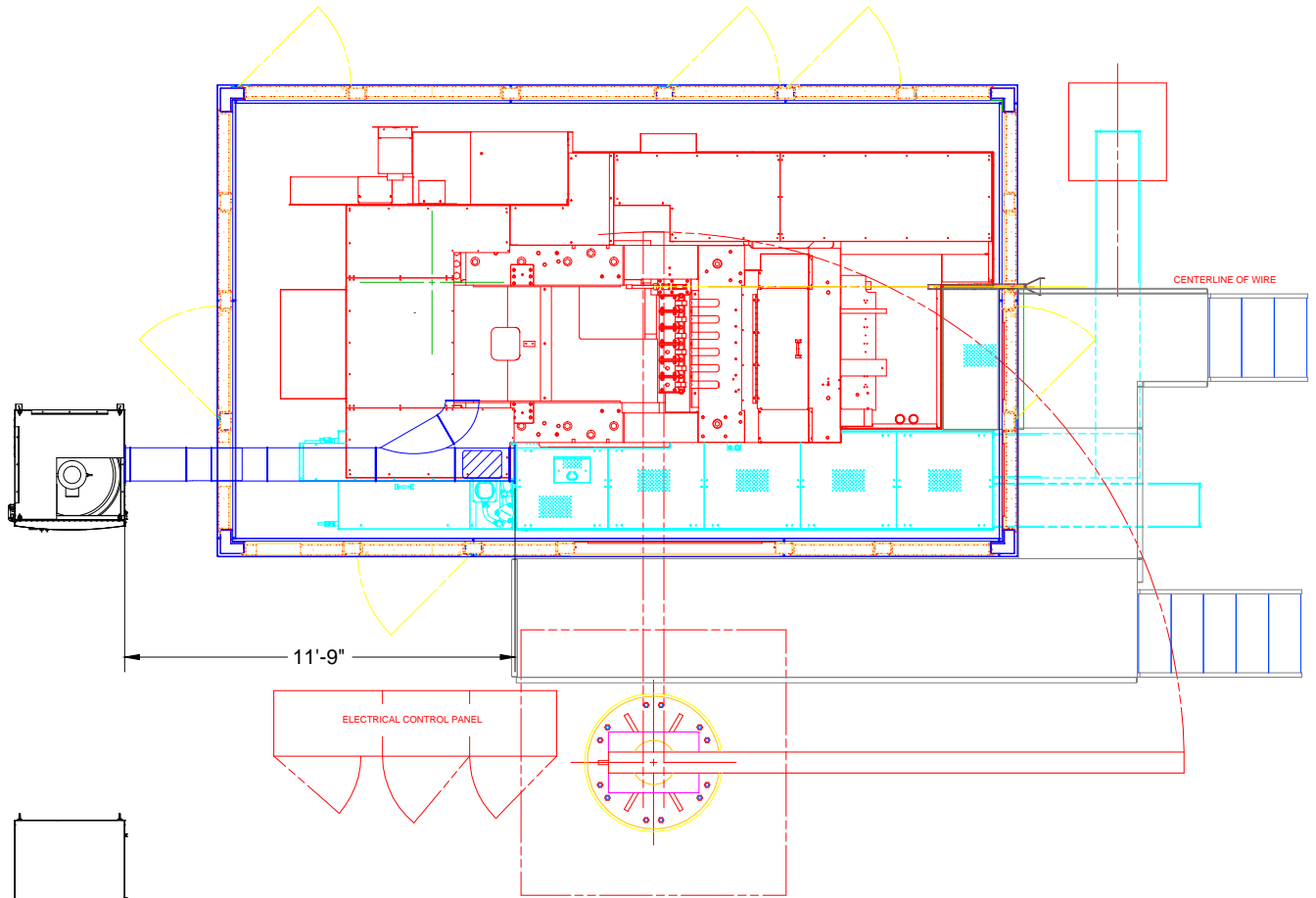


National Machinery SO20322

Duct Layout



Notes:

1. Absolut 480V 3-phase
2. Duct Self Supporting

Avani Environmental Intl.
 95 Cypress Drive
 Youngsville, NC 27596
 P# 919-570-2862 F# 919-570-2863

Avani

Project: National Machinery SO20322

Drawing: Duct Layout

Date: 12/23/13

Drawn by: MDT

Sheet No: 1 of 1

Rev 1