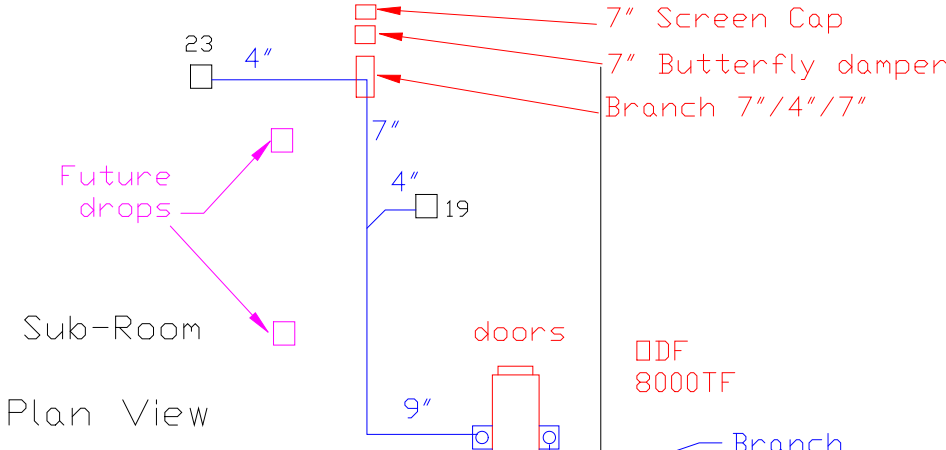
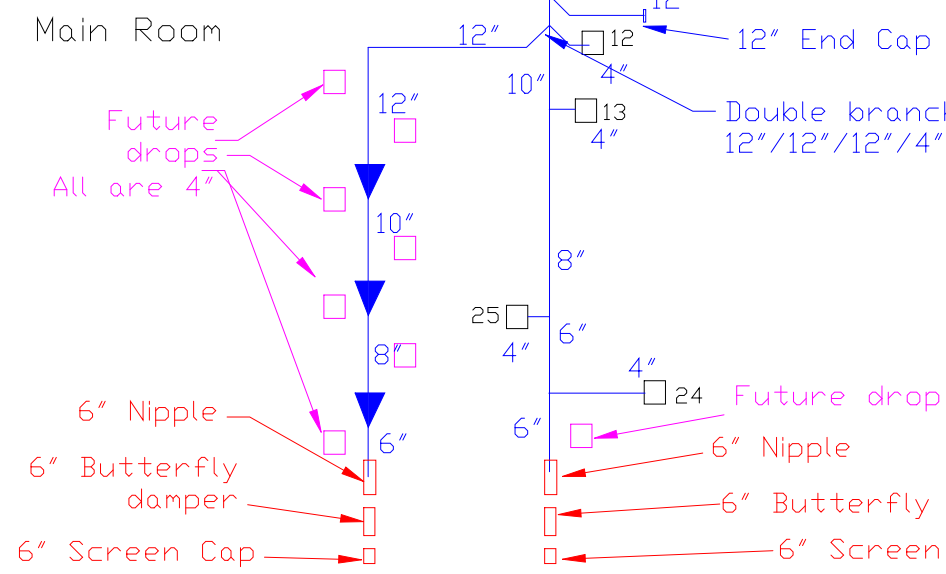


Ductwork Layout for ODF 8000TF



- Notes:
- A) ODF 8000TF 460 volts
3 phase Full load amps
14.5amps
 - B) Each drop has 270 CFM
 - C) Trunkline duct velocity
is 2700 FPM or higher
 - D) Each drop has a butter fly

damper to allow for airflow



- E) At the ends of each main ductworkline, they will have adjustments
- F) Bottom of ductwork will be run at 12' off of floor.
- G) Drain line drop with ball valve. **IAQ**
- H) Each drop will have a damper to allow for airflow

Industrial Air Quality	100 AG DRIVE	27596
Youngsville, NC	919-562-7181	919-562-7182
Project: Mintz Ind	to?	
Drawing: Ductwork layout		
Date: 5/8/00	Drawn by: RAV	Revised: