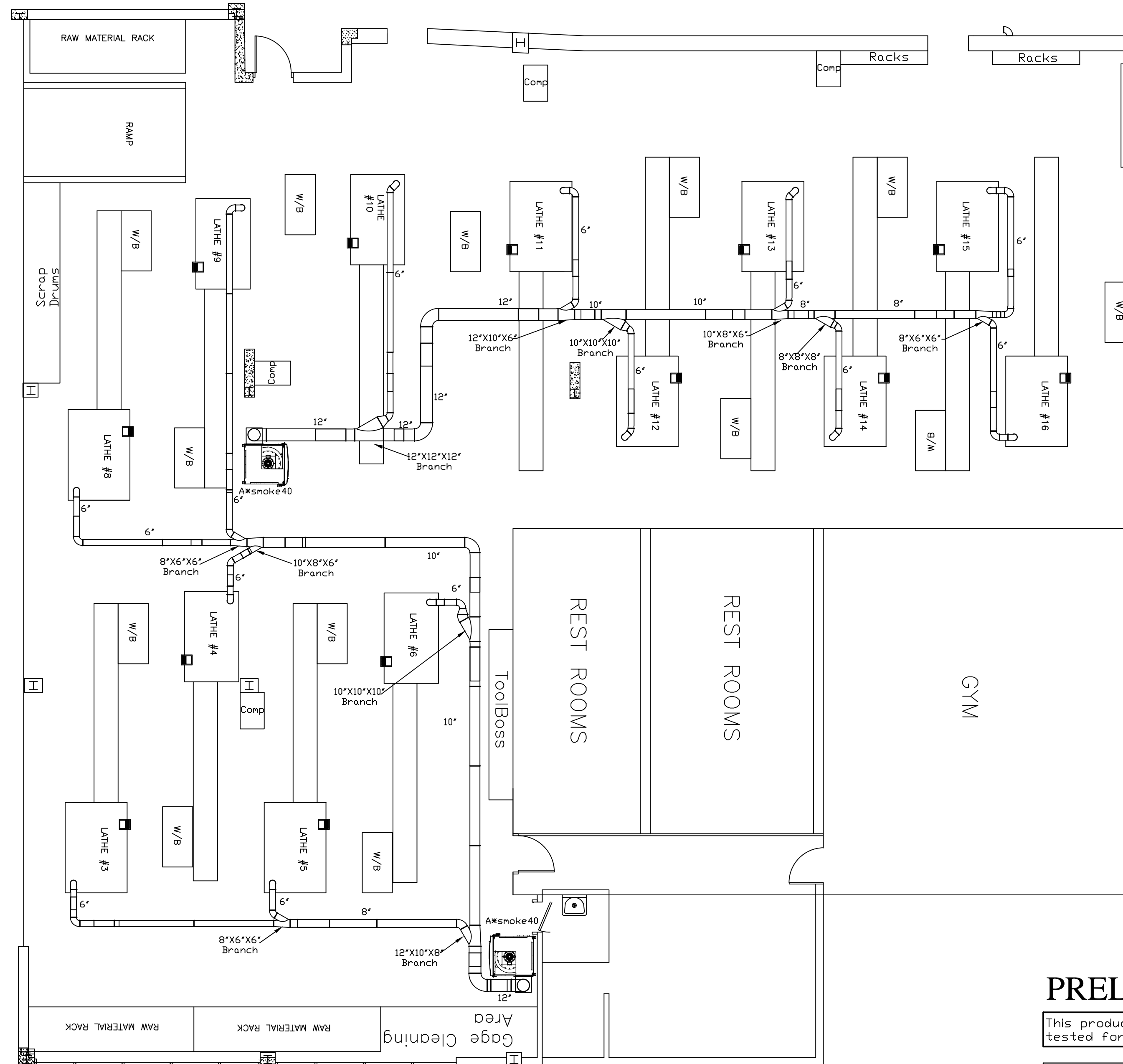


# Medtronic Building #1 2 - A\*smoke40's



**Notes:**

- 1) System 1 has 6 - 6" drops
- 2) System 2 has 7 - 6" drops
- 3) All drops have fire dampers and throttle valves
- 4) Oil pumps on A\*smoke 40's need to have a check valve installed at pump outlet.

## PRELIMINARY

This product has not been tested for seismic calculations.

Any Customer requested, or caused changes or deviations from the approved drawing that effect T&M will require a change order.

Avani Environmental Intl. Inc.  
95 Cypress Drive  
Youngsville, NC 27596  
P# 919-570-2862 F# 919-570-2863

# Avani

Project: Bldg. 1 - 2 Systems

Drawing: Absolent A-smoke40's

Date: 5/19/15 Drawn by: WWB

Sheet No: 1

Rev 0