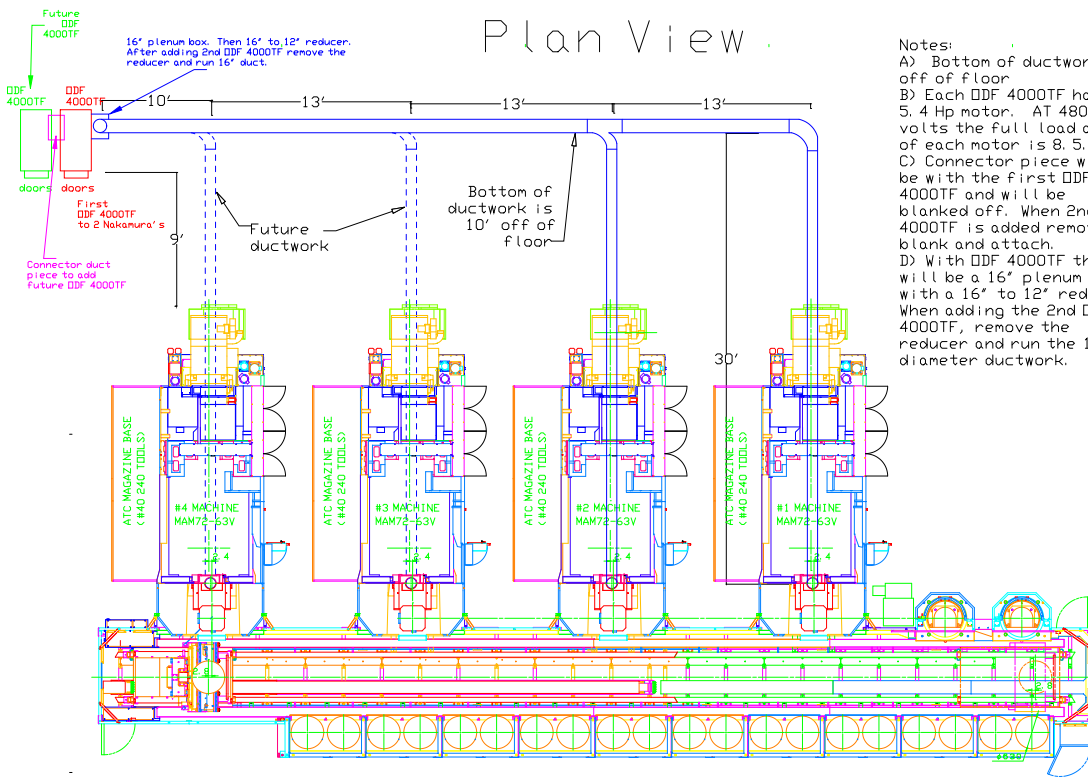


# Ductwork layout for Matsuuras Plan View



- Notes:
- A) Bottom of ductwork 10' off of floor
  - B) Each DDF 4000TF has a 5.4 Hp motor. AT 480 volts the full load amps of each motor is 8.5.
  - C) Connector piece will be with the first DDF 4000TF and will be blanked off. When 2nd DDF 4000TF is added remove blank and attach.
  - D) With DDF 4000TF there will be a 16' plenum box with a 16' to 12' reducer. When adding the 2nd DDF 4000TF, remove the reducer and run the 16' diameter ductwork.

# Ductwork layout for Matsuuras Plan View

Future  
DDF  
4000TF

16' plenum box. Then 16" to 12" reducer.  
After adding 2nd DDF 4000TF remove the  
reducer and run 16" duct.

DDF  
4000TF  
doors  
First  
DDF 4000TF  
to 2 Nakamura's  
Sector duct  
to add  
2nd DDF 4000TF

Bottom of  
ductwork is  
10' off of  
floor

Future  
ductwork

## Notes:

- A) Bottom of ductwork 10' off of floor
- B) Each DDF 4000TF has a 5.4 Hp motor. AT 480 volts the full load amps of each motor is 8.5.
- C) Connector piece will be with the first DDF 4000TF and will be blanked off. When 2nd DDF 4000TF is added remove blank and attach.
- D) With DDF 4000TF there will be a 16' plenum box with a 16" to 12" reducer. When adding the 2nd DDF 4000TF, remove the reducer and run the 16" diameter ductwork.

