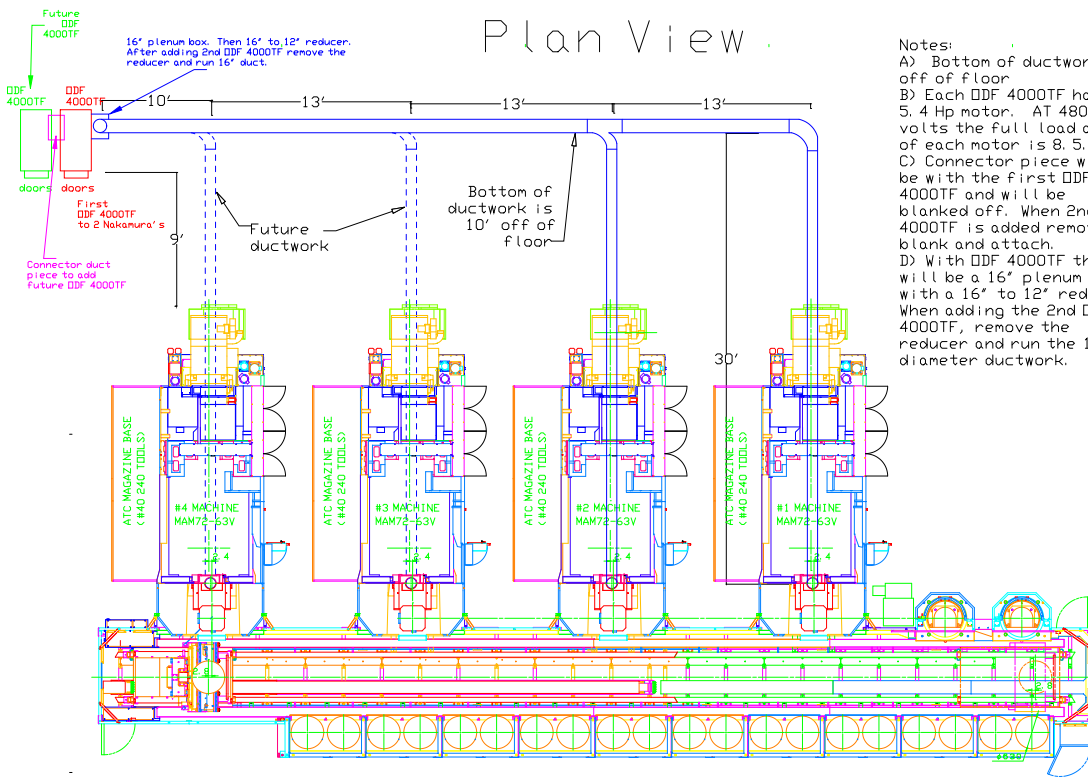


Ductwork layout for Matsuras Plan View

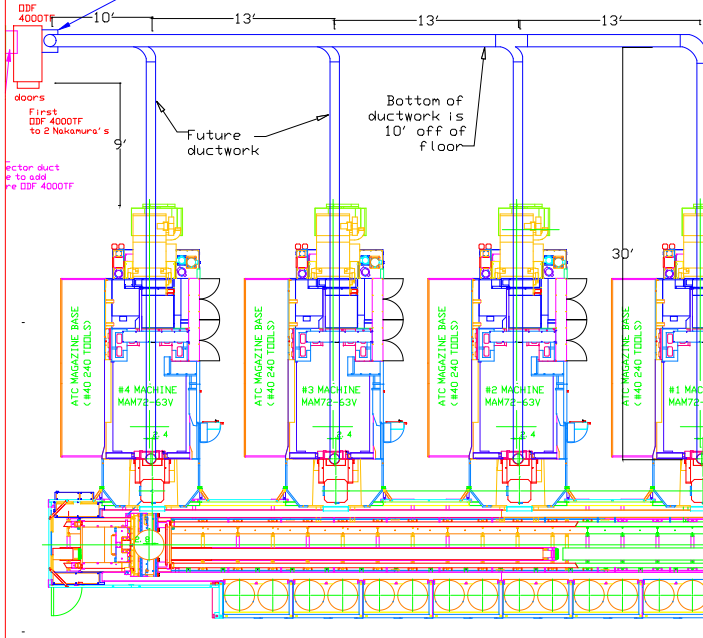


- Notes:
- A) Bottom of ductwork 10' off of floor
 - B) Each DDF 4000TF has a 5.4 Hp motor. AT 480 volts the full load amps of each motor is 8.5.
 - C) Connector piece will be with the first DDF 4000TF and will be blanked off. When 2nd DDF 4000TF is added remove blank and attach.
 - D) With DDF 4000TF there will be a 16' plenum box with a 16' to 12' reducer. When adding the 2nd DDF 4000TF, remove the reducer and run the 16' diameter ductwork.

Ductwork layout for Matsuras Plan View

Future
DDF
4000TF

16' plenum box. Then 16" to 12" reducer.
After adding 2nd DDF 4000TF remove the
reducer and run 16" duct.



Notes:

- A) Bottom of ductwork 10' off of floor
- B) Each DDF 4000TF has a 5.4 Hp motor. AT 480 volts the full load amps of each motor is 8.5.
- C) Connector piece will be with the first DDF 4000TF and will be blanked off. When 2nd DDF 4000TF is added remove blank and attach.
- D) With DDF 4000TF there will be a 16' plenum box with a 16" to 12" reducer. When adding the 2nd DDF 4000TF, remove the reducer and run the 16" diameter ductwork.