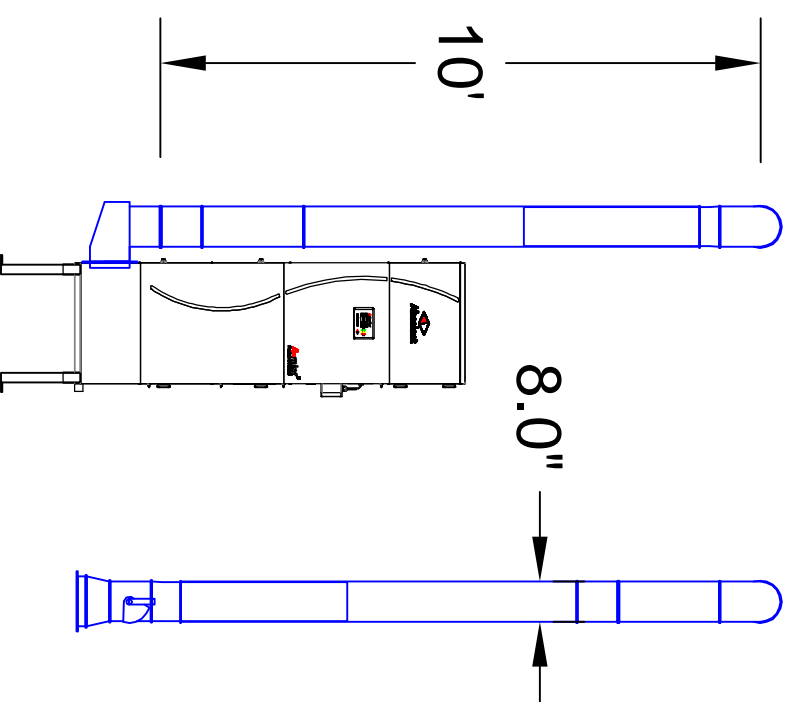


Plan View

Notes:

- 1) Duct hung from ceiling for support with cable hangers
- 2) Throttle Valve on drop
- 3) \varnothing 8" Drop
- 4) A-Mist 20 Collector



Elevation View

Any Customer requested, or caused changes or deviations from the approved drawing that effect T&M will require a change order.

This product has not been tested for seismic calculations.

PRELIMINARY

Avanti Environmental Intl. Inc.
 95 Cypress Drive
 Youngsville, NC 27596
 P# 919-570-2862 F# 919-570-2863



Project: McClain Tool	
Drawing: Duct Layout	
Date: 6/11/2015	Drawn by: HB
Sheet No:	Rev 0

This document was created with Win2PDF available at <http://www.win2pdf.com>.
The unregistered version of Win2PDF is for evaluation or non-commercial use only.
This page will not be added after purchasing Win2PDF.