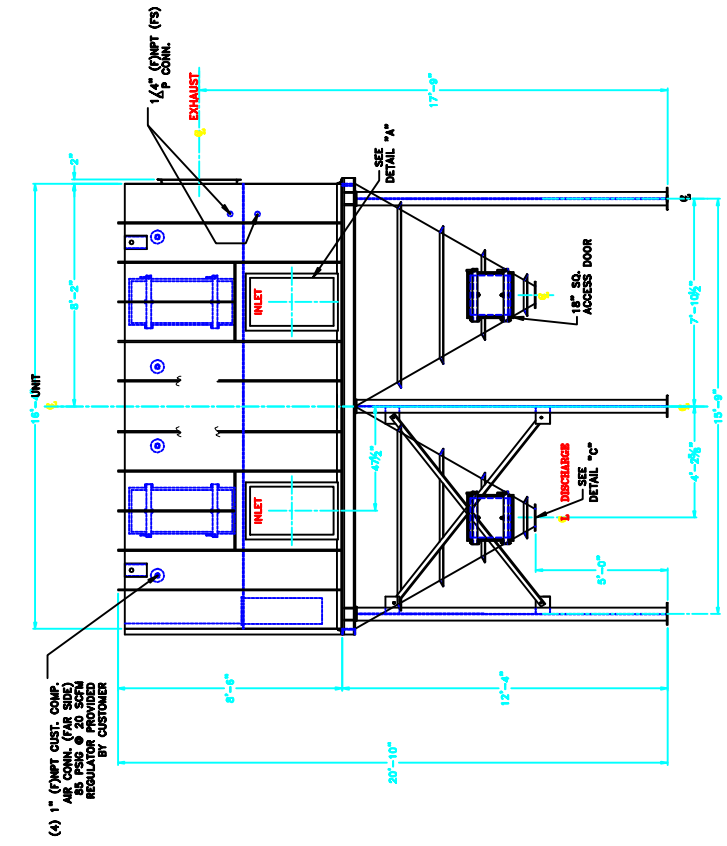
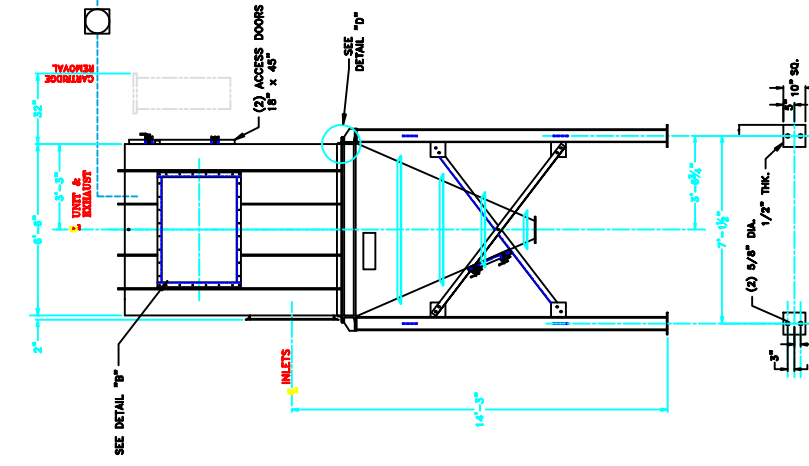
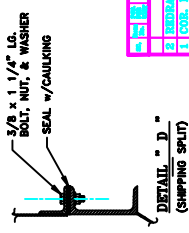
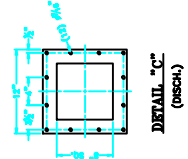
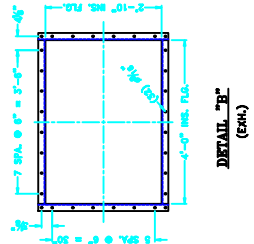
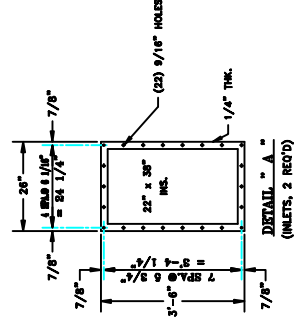


NEMA 4 CLEANING
SPRINKLER SYSTEM
DUSTEX LOCATED &
WIPED TO BOLTHOODS
BY CUST.
(PER 850-76-143)
120V/60/1



APPROVED
 APPROVED AS NOTED (ORIGINAL)
 APPROVED AS NOTED (NOT REVISION)
 NOT APPROVED-RESUBMIT
 COMPLETE CHECK, THIS WILL REMOVE ONLY
 THE INDICATED REVISIONS FROM THE ORIGINAL
 AND WILL NOT AFFECT SUBSEQUENT
 DUSTEX CORPORATION
 REV. 01/2008



GENERAL ASSEMBLY FOR CU-3000		REV. 01/2008	09888-G-01	2
2	REPAIR KIT PARTS	REV. 01/2008		
1	COIL LING SPACING	REV. 01/2008		
0	INSTALL RELEASE	REV. 01/2008		