

AVANI Top Mounted Dust Collector



Customer:	LATTC		
Customer PO#:			
AVANI SO#:		Tested By:	
Serial #:	123704		
Ship Date / Install Date:			

Please read and save these instructions. Read carefully before attempting to assemble, install, operate or maintain the product described. Protect yourself and others by observing all safety information. Failure to comply with instructions could result in personal injury and/or property damage! Retain instructions for future reference.

avani
environmental

SMT-20120912



AVANI Top Mounted Dust Collector

General Safety Information MACHINE WARNING SIGNS

▲ DANGER

Indicates an imminently hazardous situation which, if not avoided, will result in death or serious injury.

▲ WARNING

Indicates a potentially hazardous situation which, if not avoided, could result in death or serious injury.

▲ CAUTION

Indicates a potentially hazardous situation which, if not avoided, may result in minor or moderate injury.

Used without the safety alert symbol (▲) indicates potentially hazardous situation which, if not avoided, may result in property damage.



Warning of electric shock



Do not expose the equipment to rain or use in damp locations.



Figure 1



Do not use the equipment around flammable products, if not avoided, sparks can ignite vapors from flammable products.

Read and understand all warnings and operating instructions before using this equipment. Failure to follow all instructions may result in electric shock, fire, and/or serious personal injury or property damage.



AVANI Top Mounted Dust Collector

TABLE OF CONTENT

MACHINE WARNING SIGNS 2

Specifications..... 3

ADDITIONAL WELDING FUME EXTRACTOR SAFETY RULES 5

Assembly 6

Installation 6

ELECTRICAL INSTALLATION 6

Operation 7

Filters..... 11

Filter Assembly 11

Control Panel Explanation 14

Repair Parts Illustration and Repair Parts List..... 17

Repair Parts List..... 18

Appendix 1 - Electrical Circuit Diagram 25

Contact Information 53

Specifications

Motor	3 HP
.....	240V / 60Hz / 3Ph
Air Volume (C.F.M.)	1,500 Ft ³ /Min (42.45 M ³ /Min)
Filtration Stages	1st – aluminum mesh x 2 pcs
	Spec: 540 x 440 x 22 mm [21.3" x 17.3" x 0.87"]
 2nd – cartridge filter x 4 pcs
	Spec: Ø325 x 660 mm [Ø12.8" x 26"]
Dimension	200 x 127 x 125 cm (79" x 50.1" x 49.3")

Please read and save these instructions. Read carefully before attempting to assemble, install, operate or maintain the product described. Protect yourself and others by observing all safety information. Failure to comply with instructions could result in personal injury and/or property damage! Retain instructions for future reference.



SMT-20120912



AVANI Top Mounted Dust Collector

General Safety Information

(Continued)

▲ WARNING

*Use this product
carefully to*

*effectively avoid any possible danger.
Observe the following safety
regulations to avoid bodily injury due
to electrocution during use.*

Read this Manual carefully before operating the product and preserve the Operation Manual properly.

1. Keep work area clean and organized.
 - A disorderly working environment will cause inconvenience and danger during operation.
2. Check if the working environment is suitable for using the product.
 - Do not use the product in a humid environment.
 - Use the product in a good working environment to reduce risks.
 - Do not use the product in a flammable gas or liquid environment to avoid danger.
3. Keep other persons away from the

product, except for the operator, to avoid danger.

- Do not let children get close to the product. All wires used by the product shall be in a safe location to prevent children from touching them.
4. All tools shall be safely stored.
 - When the tools are not used, please store them in a dry place safely beyond the reach and access of children.
 5. If the machine breaks down, contact a service technician. Do not attempt to repair and possibly damage the machine.
 6. When using the product, be sure to put on a welding suit and mask.
 7. Use the electrical wires correctly.
 - During use, do not drag the electrical wires forcefully. Do not use these wires if fraying or current leakage occurs to avoid injury to the operator.
 8. Before replacing parts, shut off power to the machine.
 - Check that the switch is in "on" or "off" position. Do not attempt the replacement when the machine is

Please read and save these instructions. Read carefully before attempting to assemble, install, operate or maintain the product described. Protect yourself and others by observing all safety information. Failure to comply with instructions could result in personal injury and/or property damage! Retain instructions for future reference.

avani
environmental

SMT-20120912



AVANI Top Mounted Dust Collector

running. To replace parts or filter material, make certain that the switch is "off".

9. Use the power cord correctly. The total length of power cord shall not exceed 10 feet to avoid low power due to a drop in voltage and to prevent a possible hazard.

▲WARNING

When connecting the product, always follow the instructions in the Operation Manual to avoid injuries.

10. Care and Maintenance:

- Confirm that the parts/accessories have been fully assembled and will not adversely affect the machine operation.
- Check if the machine is operated properly.
- Replace damaged parts or accessories according to the instructions of the Manual. If the said instructions are not specified in the Manual, have a professional technician carry out the maintenance or replacement.
- Check that the electrical specifications of this machine meet safety requirements, and that the maintenance is carried out by a

professional technician. Use original manufacturer's parts and accessories to avoid injury.

- If a problem occurs, contact your dealer immediately.

ADDITIONAL WELDING FUME EXTRACTOR SAFETY RULES

The Welding Fume Extractor can be dangerous if it is operated incorrectly. Therefore, the product must be used cautiously to avoid causing a hazard or damage. Unnecessary injuries may occur by failing to follow the instructions of the Safety Rules Manual. Be sure to put on protection equipment or suit that can protect your body, such as helmet and eye mask to avoid injuries from occurring. If any doubts or any unfitness occurs during use, be sure to stop the operation immediately. Keep in mind that the user shall be liable for using according to the specified safety rules and for operating the machine correctly.

1. Read this Manual carefully before operating the product.
2. Be sure to follow local electrical and safety regulations and observe the electrical safety standards practiced in the relevant area. All electrical wire

AVANI Top Mounted Dust Collector

connections and installation shall be carried out by a professional technician.

3. Do not operate the product near flammable materials, as sparks may ignite these materials and cause an explosion. Please confirm there aren't any flammables near the working site to avoid hazard.
4. This product is suitable for collecting smoke and welding oil gas. Do not use it in collecting iron chips and dust at the same time to avoid producing sparks.
5. Before replacement of parts or filter materials, be certain that the switch is disconnected.
6. Do not kink the power cord and keep it away from oil, chemicals or flammables.
7. Check that the voltage, phase count and grounding wire match the machine requirements.
8. When the fan blades are operated at high speed, do not reach hand near these blades to prevent finger from breaking or clothes/necktie from getting caught. Do not put the hand or foreign matter into the air inlet to avoid getting caught in the high-speed rotation of fan blades.

9. When not in use, all air inlets of Welding Smoke Treatment Machine shall be covered.

Assembly

▲WARNING

Do not connect the Welding Smoke

Treatment Machine before the assembly is finished and you have read and understood all of the precautions stated in the Manual.

NOTE: For correct assembly, refer to the Illustrations and Parts List on pages 17-24.

Installation

MOVING AND TRANSPORTATION

The net weight of this machine is about lbs. It CANNOT be handled and transported without the help of lifting tools. For your safety, read all instructions carefully.

▲WARNING

Do not move without the help of others to avoid causing danger.

ELECTRICAL INSTALLATION

POWER CONNECTION

1. Confirm that the power is properly connected under normal power supply condition. It is recommended to provide manual shutdown device before

AVANI Top Mounted Dust Collector

connecting power.

2. It is recommended to protect the control equipment with suitable grade of fuse, and the length of fuse and power cord shall not be over 10 feet.

SHUTDOWN

1. Disconnect power by manual method.
2. When stopping operation, check if the switch is under off status.

EARTHING WIRE

Connect yellow/green wires to the earthing wire power jack. Confirm that the earthing wire has been properly connected before connecting main power cord to the machine at all times.

▲ WARNING

Do not disconnect the wiring jack

before cutting off power!

POWER INSTALLATION AND STORAGE

The electrical power is configured as following. If conditions are beyond the scope stated below, then it is required to ensure that the power is well arranged and safe.

- Ambient temperature: Between 41°F and 131°F. If the time is over 24 hours, then the ambient average temperature shall not be over 122°F.
- Humidity: Between 30% and 95%

- Altitude: 3,280 feet
- Moving and Storing: -13°F to 131°F. For short-time storage (less than 24 hours), the storage temperature can be up to 158°F.

Operation

PRIOR TO START UP

Purpose: The Welding Fume Extractor is specially suitable for treating the smoke generated during ordinary welding processing work, which can effectively collect and screen the smoke resulting from the welding work in maintaining the air quality of the working environment.

- Before starting the machine, be sure to read this Manual carefully.
- Before starting the machine, check if relevant safety protection measures have been taken according to the Manual.
- Before starting the machine, watch the motor turning direction according to the instruction of arrow direction.

START UP

1. To ensure satisfactory performance for the Welding Smoke Treatment Machine, please confirm the air volume, power

AVANI Top Mounted Dust Collector

and the matching table of the Welding Smoke Treatment Machine.

2. Connect power according to electrical installation procedure after installing the Welding Smoke Treatment Machine and the table. Disconnect power according to electrical installation procedure when the machine is not used.
3. The Welding Smoke Treatment Machine shall be turned on and off by pushing I/O button. Under normal operation status, use such I/O button.

Unpacking

The machine should be unpacked carefully. Check if the machine and components are consistent with those indicated in the Parts List. If any doubt arises or when the components are incomplete, contact your dealer.

OPERATION – Filter Cleaning

1. Attached compressed air to the unit for cleaning purposes, at a source pressure of 90 PSI. The connection point is accessed by removing the panel on the side of the unit where the PSI label is in place and requires a 1/4" NPT fitting. A regulator must

be incorporated in line to set pressure. Do not exceed 90 PSI pressure.



2. Refer to control panel for initiating power to the motor and subsequent vacuum from the unit.
3. During operation, the pressure gauge should maintain a reading of 6-6.5" WIC pressure or less.
4. If pressure exceeds 6.5" WIC, and/or you experience a reduction in vacuum, proceed with the following action(s)
 - The unit should be powered off and the manual cleaning button pushed one to two times.
 - Adjust the timer board to increase

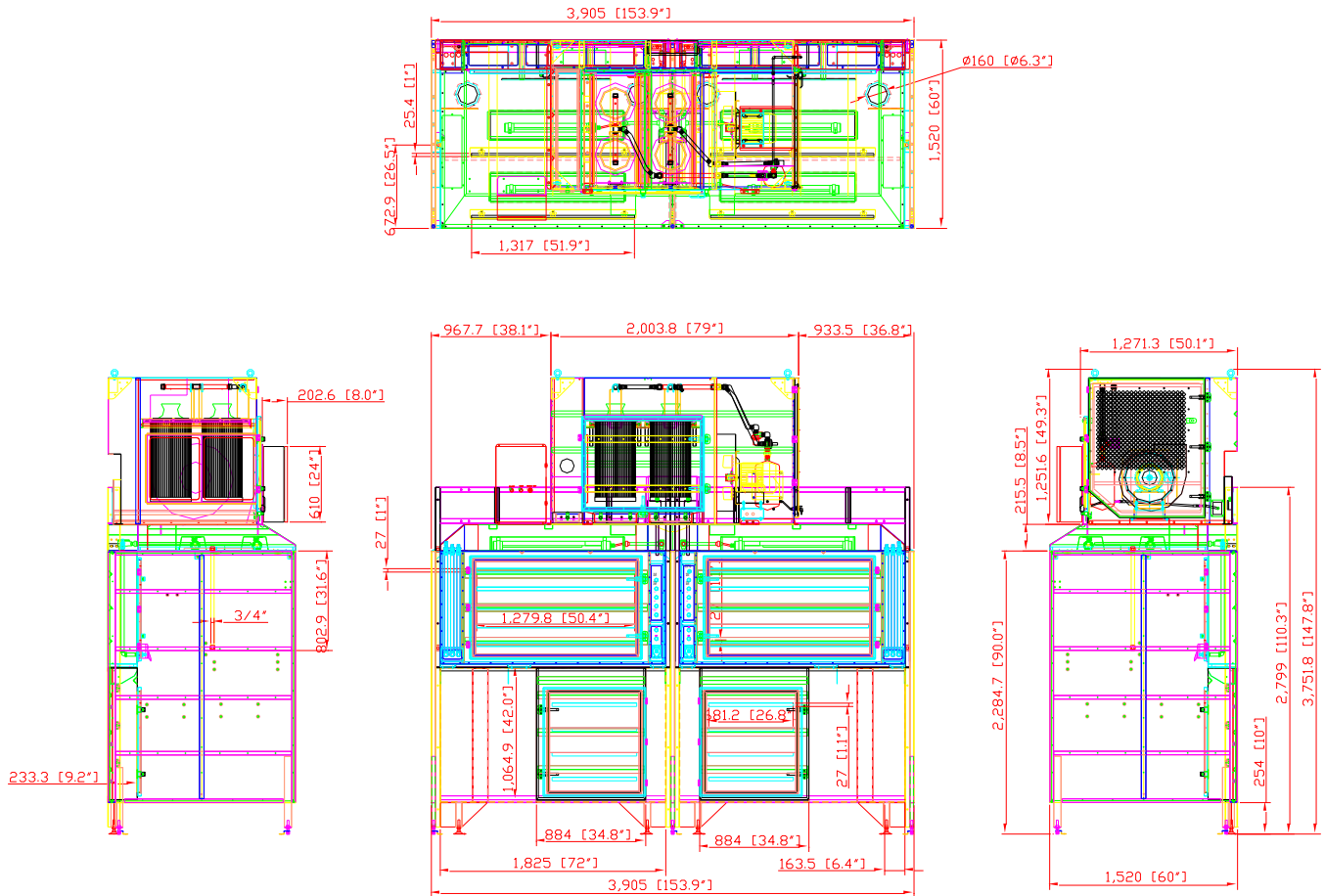
AVANI Top Mounted Dust Collector

frequency of pulses.

5. If pressure continues to exceed 6-6.5" WIC and operating vacuum remains weak, remove the aluminum mesh filter, clean with compressed air and re-install.
6. If vacuum continues to remain weak after cleaning the aluminum mesh filter, contact AVANI for filter replacement. (See contact list in this manual).

AVANI Top Mounted Dust Collector

Dimensions (in mm/inches)



AVANI Top Mounted Dust Collector

Filters

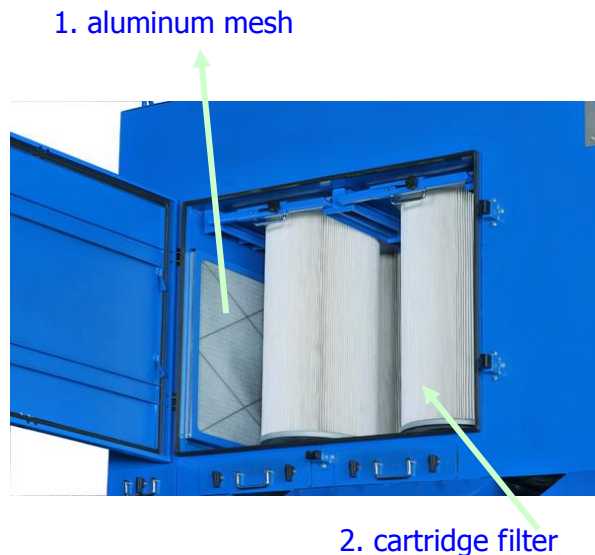


Figure 2 - Filters

1. **ALUMINUM MESH** captures sparks and steel chips.
 - (1) specification: 540 x 440 x 22 mm [21.3" x 17.3" x 0.87"]
 - (2) quantity: 2 pcs
 - (3) filter efficiency: 25 ~ 30%
2. **PLEATED CARTRIDGE FILTER** that can be cleaned by push-button pulse-jet cleaning of the cartridge filter from an

onboard air tank.

- (1) specification: Ø325 x 660 mm [Ø12.8" x 26"]
- (2) quantity: 4 pcs
- (3) material: Polyester with TEFLON treatment & coating.
- (4) filtering area: 10m² x 4 = 40m² (430.4 ft²)

Filter Assembly

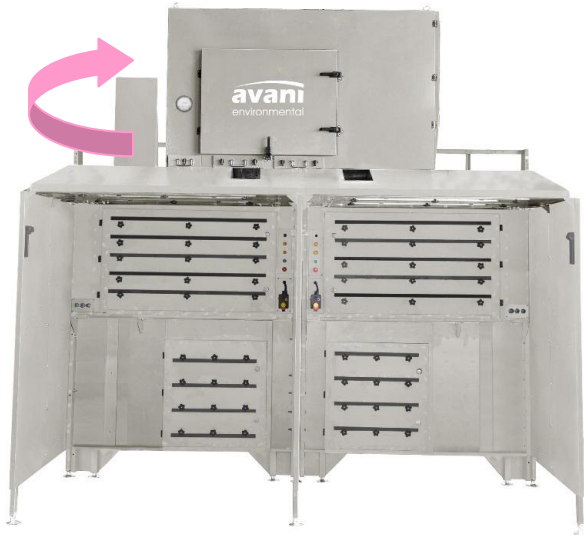
• Aluminum mesh:



1. Pull out the aluminum mesh and dispose it away. Install with a new one.

• Cartridge filter installation procedure:

AVANI Top Mounted Dust Collector



1. Open the front maintenance door of the top mounted dust collector.



2. Loosen the knobs (circled in green).
Release the filter handle fixing plates.
Slide the filter handle fixing plates.



3. Pull down the left and right filter handles.



4. Pull out the cartridge filter.
5. Take out the cartridge filter set and install with a new cartridge.

AVANI Top Mounted Dust Collector



6. Slide the new cartridge into the track and push it to the end.



7. Pull up the left and right filter handles.



8. Attach the filter handle fixing plate upon the left and right filter handles. Slide and secure them in position. Fasten the plates and handles with knobs (circled in green).



9. Close the front maintenance door of the top mounted dust collector. Assembly completed.

AVANI Top Mounted Dust Collector

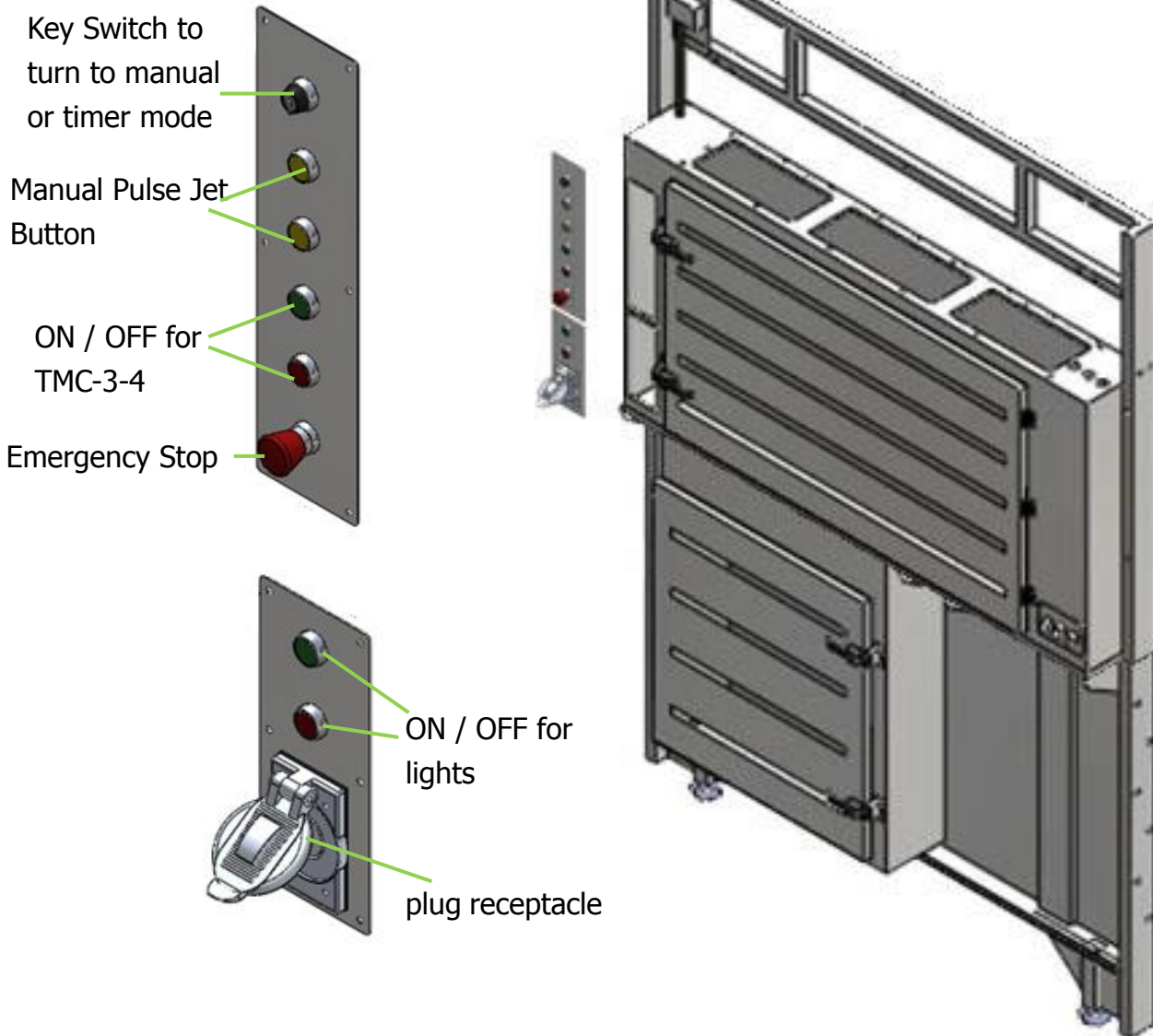
Control Panel Explanation

Individual UL Certified Control Box (at dust collector)



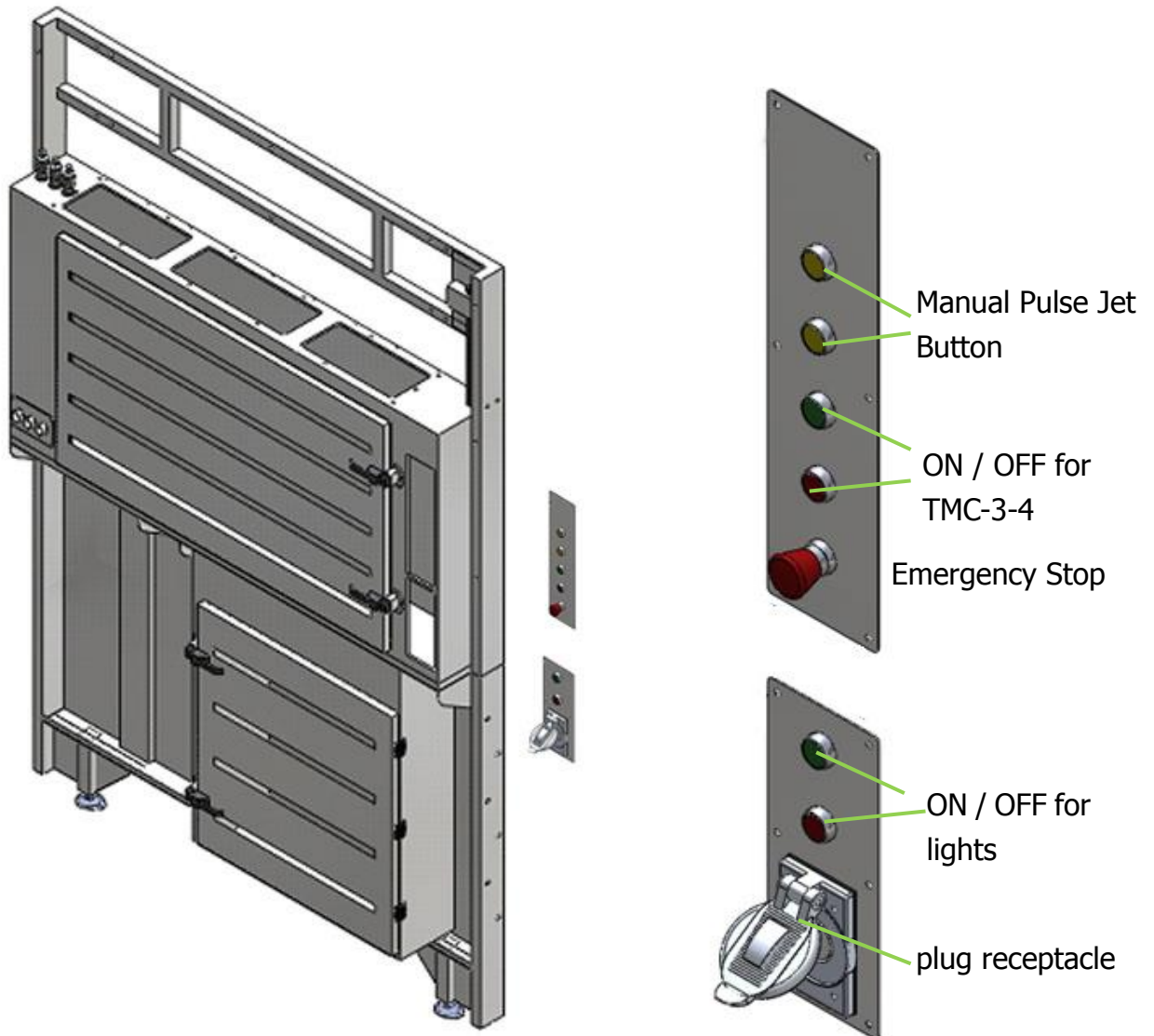
AVANI Top Mounted Dust Collector

Control Panel (at the right booth when facing the unit)



AVANI Top Mounted Dust Collector

Control Panel (at the left booth when facing the unit)



AVANI Top Mounted Dust Collector

Repair Parts Illustration and Repair Parts List
For Repair Parts, call +1-919-570-2862
24 hours a day – 365 days a year

Please provide following information:

- Model number
- Serial number (if any)
- Part description and number as shown in parts list

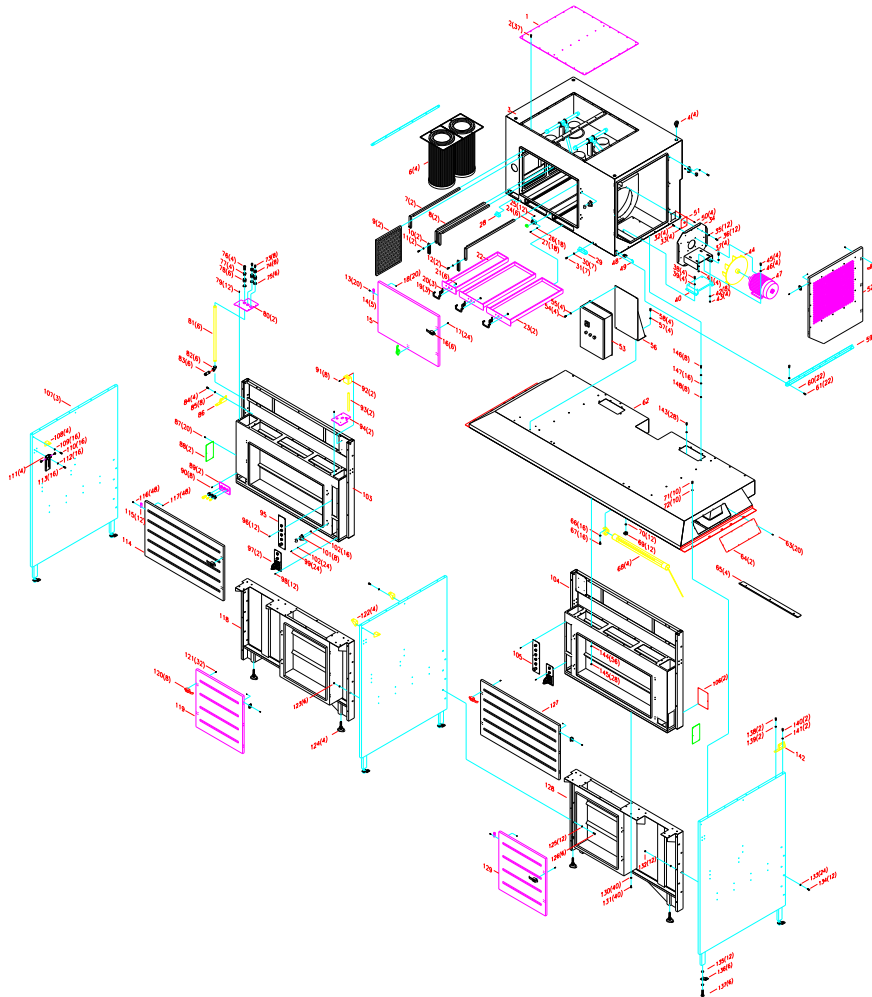


Figure 3

AVANI Top Mounted Dust Collector

Repair Parts List

Repair Parts List for Top Mount Dust Collector

Reference Number	Description	Part Number	Quantity
1	Seal Cover (upper)	OL05-01-SDC-B-3-4-1	1
2	Phillips Head Screw (1/4"*3/4")	OL05-01-SDC-B-3-4-2	37
3	Filter Chamber	OL05-01-SDC-B-3-4-3	1
4	Eye Bolt	OL05-01-SDC-B-3-4-4	4
6	Cartridge Filter	OL05-01-SDC-B-3-4-6	4
7	Filter Handle (right)	OL05-01-SDC-B-3-4-7	2
8	Filter Handle (left)	OL05-01-SDC-B-3-4-8	2
9	Aluminum Mesh	OL05-01-SDC-B-3-4-9	2
10	Compression Latch Base	OL05-01-SDC-B-3-4-10	2
11	Flat Washer (5/16"*OD18*2t)	OL05-01-SDC-B-3-4-11	2
12	Knob (5/16"*3/4")	OL05-01-SDC-B-3-4-12	2
13	Cap Screw	OL05-01-SDC-B-3-4-13	20
14	Hinge	OL05-01-SDC-B-3-4-14	5
15	Door	OL05-01-SDC-B-3-4-15	1
16	Compression Latch	OL05-01-SDC-B-3-4-16	6
17	Countersunk Inner Hex Screw	OL05-01-SDC-B-3-4-17	24
18	Flange Nut	OL05-01-SDC-B-3-4-18	20
19	Drawer Handle	OL05-01-SDC-B-3-4-19	3
20	Drawer Lock	OL05-01-SDC-B-3-4-20	3
21	Hex Nut	OL05-01-SDC-B-3-4-21	6
22	Drawer (small)	OL05-01-SDC-B-3-4-22	1
23	Drawer (large)	OL05-01-SDC-B-3-4-23	2
24	Compression Latch Base	OL05-01-SDC-B-3-4-24	6

AVANI Top Mounted Dust Collector

Reference Number	Description	Part Number	Quantity
25	Countersunk Inner Hex Screw	OL05-01-SDC-B-3-4-25	12
26	Flat Washer (1/4"*OD12*1t)	OL05-01-SDC-B-3-4-26	18
27	Hex Screw (1/4"*3/4")	OL05-01-SDC-B-3-4-27	18
28	Main Chamber Fixing Base - 1	OL05-01-SDC-B-3-4-28	1
29	Main Chamber Fixing Base - 2	OL05-01-SDC-B-3-4-29	1
30	Hex Screw (5/16"*3/4")	OL05-01-SDC-B-3-4-30	7
31	Flat Washer (5/16"*OD23*2t)	OL05-01-SDC-B-3-4-31	7
32	Hex Screw (1/2"*3/4")	OL05-01-SDC-B-3-4-32	4
33	Lock Washer (1/2")	OL05-01-SDC-B-3-4-33	4
34	Motor Base	OL05-01-SDC-B-3-4-34	1
35	Flat Washer (5/16"*OD23*2t)	OL05-01-SDC-B-3-4-35	12
36	Hex Screw (5/16"*3/4")	OL05-01-SDC-B-3-4-36	12
37	Hex Screw (5/16"*1")	OL05-01-SDC-B-3-4-37	4
38	Hex Screw (5/16"*3/4")	OL05-01-SDC-B-3-4-38	4
39	Flat Washer (5/16"*OD23*2t)	OL05-01-SDC-B-3-4-39	4
40	Motor Supporting Base	OL05-01-SDC-B-3-4-40	1
41	Hex Nut (3/8")	OL05-01-SDC-B-3-4-41	4
42	Flat Washer (5/16"*OD23*2t)	OL05-01-SDC-B-3-4-42	4
43	Hex Nut (5/16")	OL05-01-SDC-B-3-4-43	4
44	Impeller	OL05-01-SDC-B-3-4-44	1
45	Hex Screw (3/8"*1-1/2")	OL05-01-SDC-B-3-4-45	4
46	Flat Washer (3/8"*OD23*2t)	OL05-01-SDC-B-3-4-46	4
47	Motor	OL05-01-SDC-B-3-4-47	1
48	Switch Valve	OL05-01-SDC-B-3-4-48	1
49	Connector	OL05-01-SDC-B-3-4-49	1

AVANI Top Mounted Dust Collector

Reference Number	Description	Part Number	Quantity
50	Phillips Head Sheet Metal Screw (5/32"*3/4")	OL05-01-SDC-B-3-4-50	4
51	Inlet Seal Board	OL05-01-SDC-B-3-4-51	1
52	Side Door	OL05-01-SDC-B-3-4-52	1
53	Control Box	OL05-01-SDC-B-3-4-53	1
54	Hex Screw (1/4"*3/4")	OL05-01-SDC-B-3-4-54	4
55	Flat Washer (1/4"*OD33*2t)	OL05-01-SDC-B-3-4-55	4
56	Control Box Base	OL05-01-SDC-B-3-4-56	1
57	Hex Screw (5/16"*3/4")	OL05-01-SDC-B-3-4-57	4
58	Flat Washer (5/16"*OD23*2t)	OL05-01-SDC-B-3-4-58	4
59	Main Chamber Fixing Base - 3	OL05-01-SDC-B-3-4-59	2
60	Hex Screw (5/16"*3/4")	OL05-01-SDC-B-3-4-60	22
61	Flat Washer (5/16"*OD23*2t)	OL05-01-SDC-B-3-4-61	22
62	Top Hood Draft	OL05-01-SDC-B-3-4-62	1
63	Phillips Head Sheet Metal Screw (5/32"*3/4")	OL05-01-SDC-B-3-4-63	20
64	Service Side Panel	OL05-01-SDC-B-3-4-64	2
65	Slot Cover	OL05-01-SDC-B-3-4-65	4
66	Flat Washer (1/4"*OD19*2t)	OL05-01-SDC-B-3-4-66	16
67	Hex Screw (1/4"*3/4")	OL05-01-SDC-B-3-4-67	16
68	Working Light	OL05-01-SDC-B-3-4-68	4
69	Knob (3/8")	OL05-01-SDC-B-3-4-69	12
70	Flat Washer (3/8"*OD23*2t)	OL05-01-SDC-B-3-4-70	12
71	Hex Screw (5/16"*3/4")	OL05-01-SDC-B-3-4-71	10
72	Flat Washer (5/16"*OD23*2t)	OL05-01-SDC-B-3-4-72	10
73	Connector	OL05-01-SDC-B-3-4-73	8

AVANI Top Mounted Dust Collector

Reference Number	Description	Part Number	Quantity
74	Bushing	OL05-01-SDC-B-3-4-74	8
75	Dust-tight Gasket	OL05-01-SDC-B-3-4-75	6
76	Nozzle	OL05-01-SDC-B-3-4-76	4
77	Bushing	OL05-01-SDC-B-3-4-77	4
78	Connector	OL05-01-SDC-B-3-4-78	6
79	Phillips Head Sheet Metal Screw (5/32"*3/4")	OL05-01-SDC-B-3-4-79	12
80	Pipe Connector Panel (top)	OL05-01-SDC-B-3-4-80	2
81	Nipple	OL05-01-SDC-B-3-4-81	6
82	Elbow	OL05-01-SDC-B-3-4-82	6
83	Nipple	OL05-01-SDC-B-3-4-83	6
84	Hex Screw (3/8"*2-1/2")	OL05-01-SDC-B-3-4-84	4
85	Flat Washer (3/8"*OD23*2t)	OL05-01-SDC-B-3-4-85	8
86	Triangular Rear Support (left)	OL05-01-SDC-B-3-4-86	1
87	Phillips Head Sheet Metal Screw (5/32"*3/4")	OL05-01-SDC-B-3-4-87	20
88	Seal Board	OL05-01-SDC-B-3-4-88	2
89	Pipe Connector Panel (front)	OL05-01-SDC-B-3-4-89	2
90	Phillips Head Sheet Metal Screw (5/32"*1/2")	OL05-01-SDC-B-3-4-90	8
91	Phillips Head Sheet Metal Screw (5/32"*1/2")	OL05-01-SDC-B-3-4-91	8
92	Electrical Junction Box	OL05-01-SDC-B-3-4-92	2
93	Cord Protecting Pipe	OL05-01-SDC-B-3-4-93	2
94	Cable Connector Panel (top)	OL05-01-SDC-B-3-4-94	2
95	Control Panel (left)	OL05-01-SDC-B-3-4-95	1

AVANI Top Mounted Dust Collector

Reference Number	Description	Part Number	Quantity
96	Phillips Head Sheet Metal Screw (5/32"*1/2")	OL05-01-SDC-B-3-4-96	12
97	Cable Connector Panel (front)	OL05-01-SDC-B-3-4-97	2
98	Phillips Head Sheet Metal Screw (5/32"*1/2")	OL05-01-SDC-B-3-4-98	12
99	Hex Screw (1/4"*3/4")	OL05-01-SDC-B-3-4-99	24
100	Flat Washer (1/4"*OD12*1t)	OL05-01-SDC-B-3-4-100	24
101	Compression Latch Base	OL05-01-SDC-B-3-4-101	8
102	Countersunk Inner Hex Screw	OL05-01-SDC-B-3-4-102	16
103	Backdraft Module(upper right)	OL05-01-SDC-B-3-4-103	1
104	Backdraft Module(upper left)	OL05-01-SDC-B-3-4-104	1
105	Control Panel (right)	OL05-01-SDC-B-3-4-105	1
106	Seal Board	OL05-01-SDC-B-3-4-106	2
107	Side Panel	OL05-01-SDC-B-3-4-107	3
108	Corner Gusset	OL05-01-SDC-B-3-4-108	4
109	Flat Washer (5/16"*OD23*2t)	OL05-01-SDC-B-3-4-109	16
110	Hex Screw (5/16"*3/4")	OL05-01-SDC-B-3-4-110	16
111	Adjustable Curtain Rods	OL05-01-SDC-B-3-4-111	4
112	Hex Screw (1/4"*3/4")	OL05-01-SDC-B-3-4-112	16
113	Flat Washer (1/4"*OD19*2t)	OL05-01-SDC-B-3-4-113	16
114	Backdraft Module - Slot Cover (upper right)	OL05-01-SDC-B-3-4-114	1
115	Hinge	OL05-01-SDC-B-3-4-115	12
116	Cap Screw	OL05-01-SDC-B-3-4-116	48
117	Flange Nut	OL05-01-SDC-B-3-4-117	48
118	Backdraft Module (lower right)	OL05-01-SDC-B-3-4-118	1

AVANI Top Mounted Dust Collector

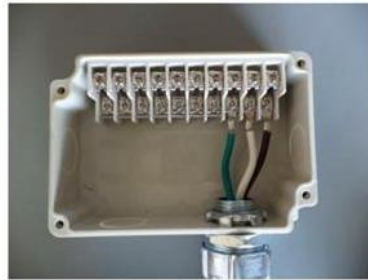
Reference Number	Description	Part Number	Quantity
119	Backdraft Module - Slot Cover (lower right)	OL05-01-SDC-B-3-4-119	1
120	Compression Latch	OL05-01-SDC-B-3-4-120	8
121	Countersunk Inner Hex Screw	OL05-01-SDC-B-3-4-121	32
122	Corner Gusset	OL05-01-SDC-B-3-4-122	4
123	Adjustable Feet	OL05-01-SDC-B-3-4-123	4
124	Half-threaded Screw (3/8"*5-1/2")	OL05-01-SDC-B-3-4-124	6
125	Flat Washer (3/8"*OD23*2t)	OL05-01-SDC-B-3-4-125	12
126	Lock Nut (3/8")	OL05-01-SDC-B-3-4-126	6
127	Backdraft Module - Slot Cover (upper left)	OL05-01-SDC-B-3-4-127	1
128	Backdraft Module (lower left)	OL05-01-SDC-B-3-4-128	1
129	Backdraft Module - Slot Cover (lower left)	OL05-01-SDC-B-3-4-129	1
130	Hex Screw (5/16"*3/4")	OL05-01-SDC-B-3-4-130	40
131	Flat Washer (5/16"*OD23*2t)	OL05-01-SDC-B-3-4-131	40
132	Lock Nut (3/8")	OL05-01-SDC-B-3-4-132	12
133	Flat Washer (3/8"*OD23*2t)	OL05-01-SDC-B-3-4-133	24
134	Half-threaded Screw (3/8"*4")	OL05-01-SDC-B-3-4-134	12
135	Hex Nut	OL05-01-SDC-B-3-4-135	12
136	Sleeve Anchor Base	OL05-01-SDC-B-3-4-136	6
137	Hex Screw	OL05-01-SDC-B-3-4-137	12
138	Hex Screw (5/16"*3/4")	OL05-01-SDC-B-3-4-138	2
139	Flat Washer (5/16"*OD23*2t)	OL05-01-SDC-B-3-4-139	2
140	Hex Screw (3/8"*3/4")	OL05-01-SDC-B-3-4-140	2
141	Flat Washer (3/8"*OD23*2t)	OL05-01-SDC-B-3-4-141	2

AVANI Top Mounted Dust Collector

Reference Number	Description	Part Number	Quantity
142	Triangular Rear Support (right)	OL05-01-SDC-B-3-4-142	1
143	Hex Screw (5/16"*3/4")	OL05-01-SDC-B-3-4-143	28
144	Flat Washer (5/16"*OD23*2t)	OL05-01-SDC-B-3-4-144	56
145	Hex Nut (5/16")	OL05-01-SDC-B-3-4-145	28
146	Hex Screw (5/16"*3/4")	OL05-01-SDC-B-3-4-146	8
147	Flat Washer (5/16"*OD23*2t)	OL05-01-SDC-B-3-4-147	16
148	Hex Nut (5/16")	OL05-01-SDC-B-3-4-148	8

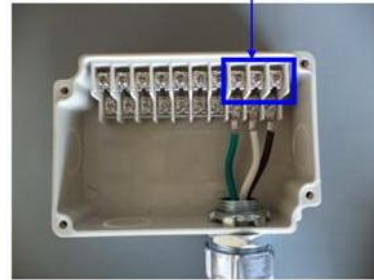
AVANI Top Mounted Dust Collector

Appendix 1 - Electrical Circuit Diagram



- ◆ Open the cover of the electrical junction box.

Local main power supply coming in.



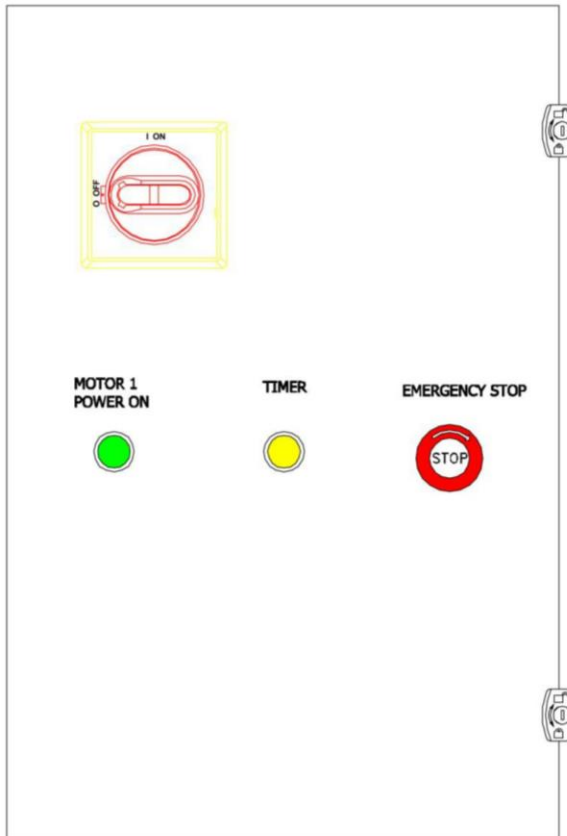
- ◆ Link this set to local main power supply for 120V / 60Hz / 1-phase.



- ◆ Lock the cover of the electrical junction box.

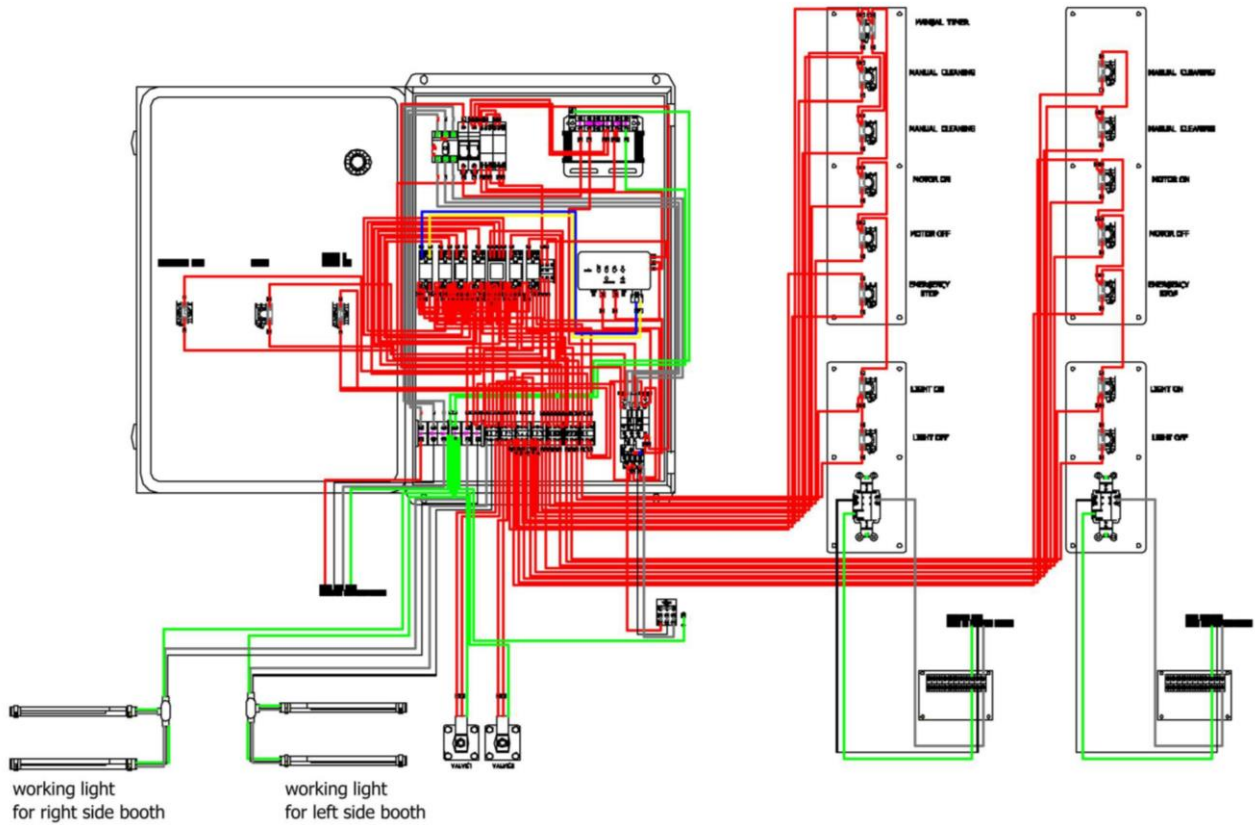
AVANI Top Mounted Dust Collector

Main Electrical Box Wiring For TMC-3-4



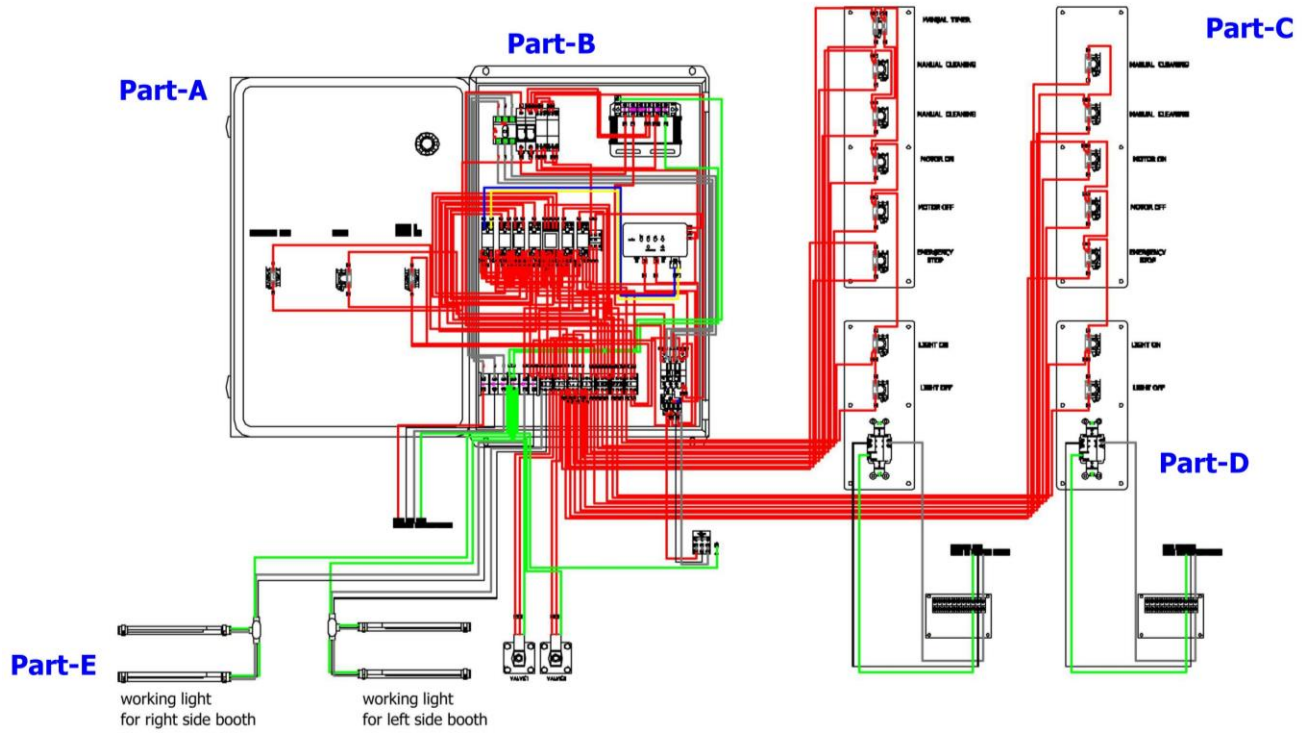
AVANI Top Mounted Dust Collector

Main Electrical Box Wiring For TMC-3-4



AVANI Top Mounted Dust Collector

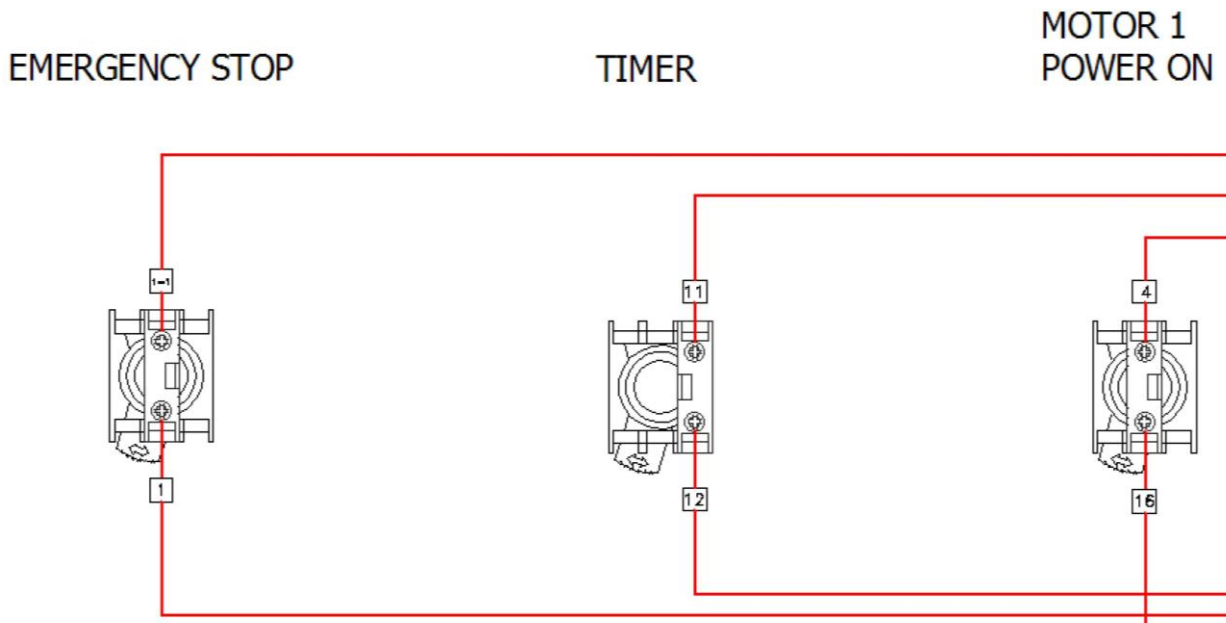
Main Electrical Box Wiring For TMC-3-4



AVANI Top Mounted Dust Collector

Main Electrical Box Wiring For TMC-3-4

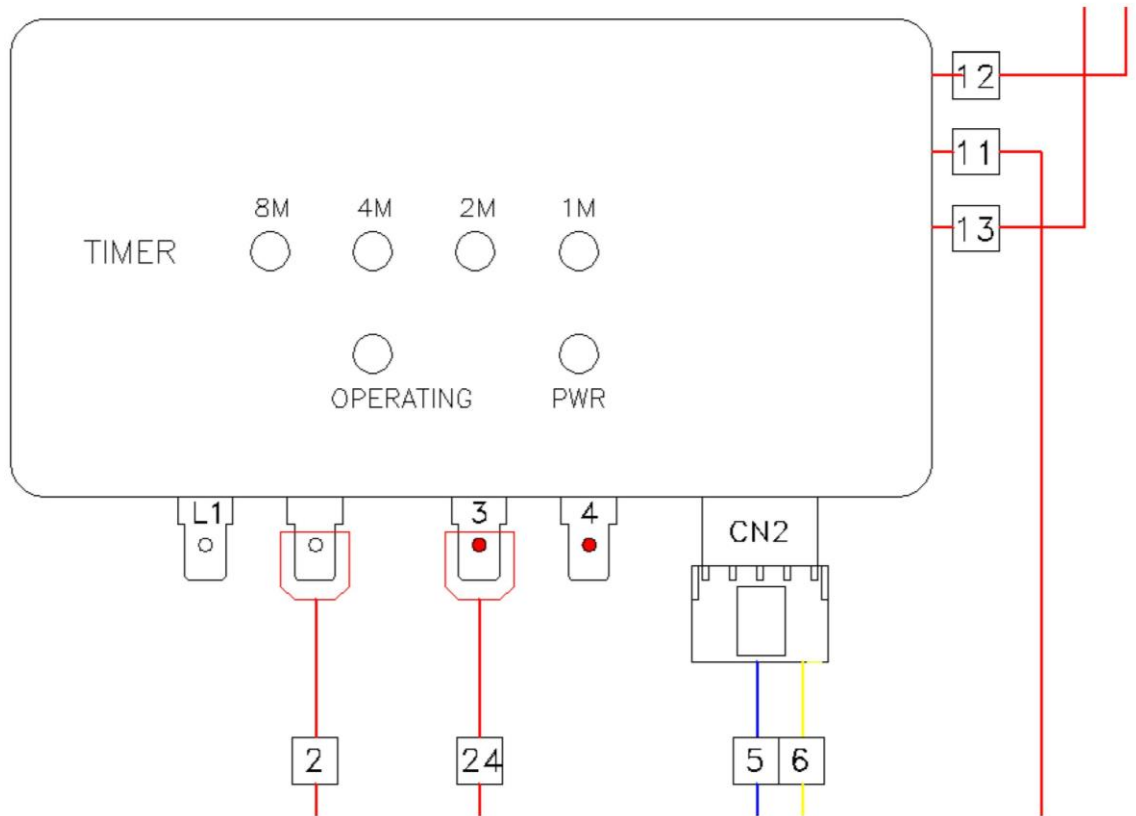
Part-A



AVANI Top Mounted Dust Collector

Main Electrical Box Wiring For TMC-3-4

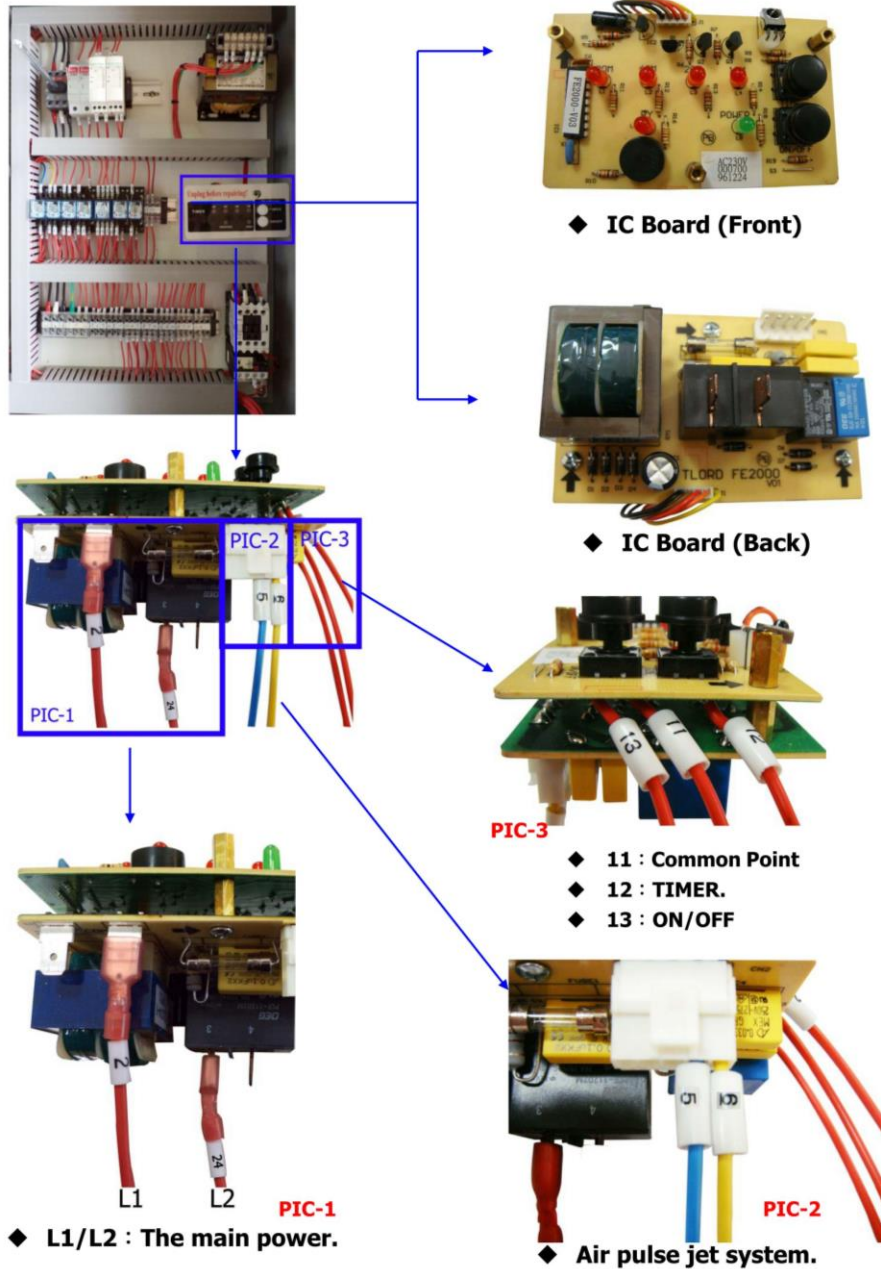
Part-B-1 IC Board



AVANI Top Mounted Dust Collector

Main Electrical Box Components for TMC-3-4

Part-B-1



AVANI Top Mounted Dust Collector

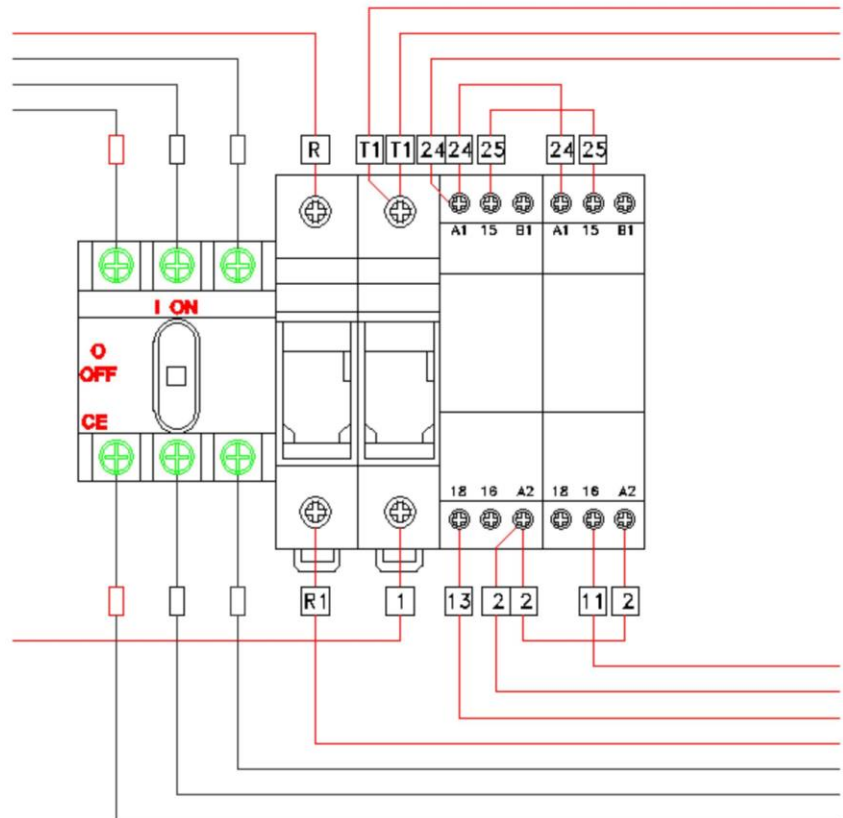
Main Electrical Box Wiring For TMC-3-4

Part-B-2 :

Panel disconnect switch.

Fuse bus.

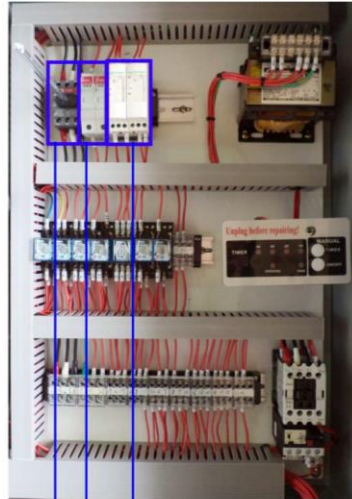
TIMER.



AVANI Top Mounted Dust Collector

Main Electrical Box Components for TMC-3-4

Part-B-2



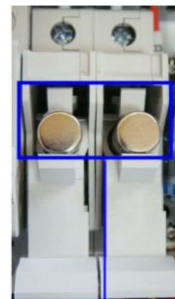
◆ Panel disconnect switch.



◆ Fuse bus.



◆ TIMER.

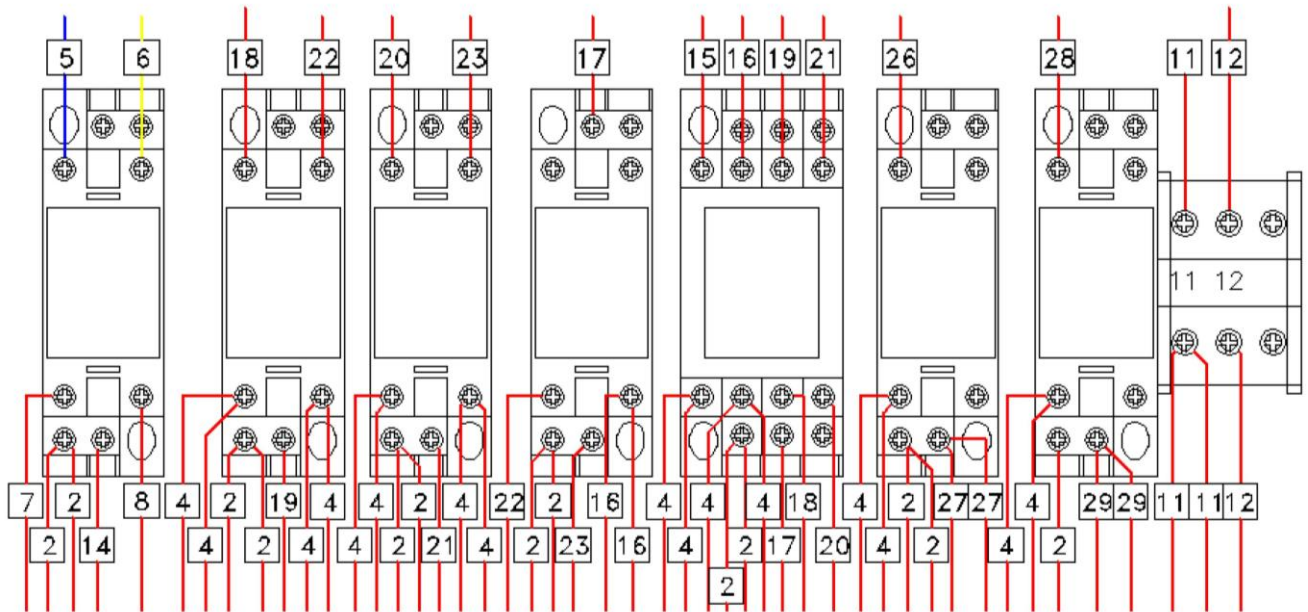


AVANI Top Mounted Dust Collector

Main Electrical Box Wiring For TMC-3-4

Part-B-3 :

Relay

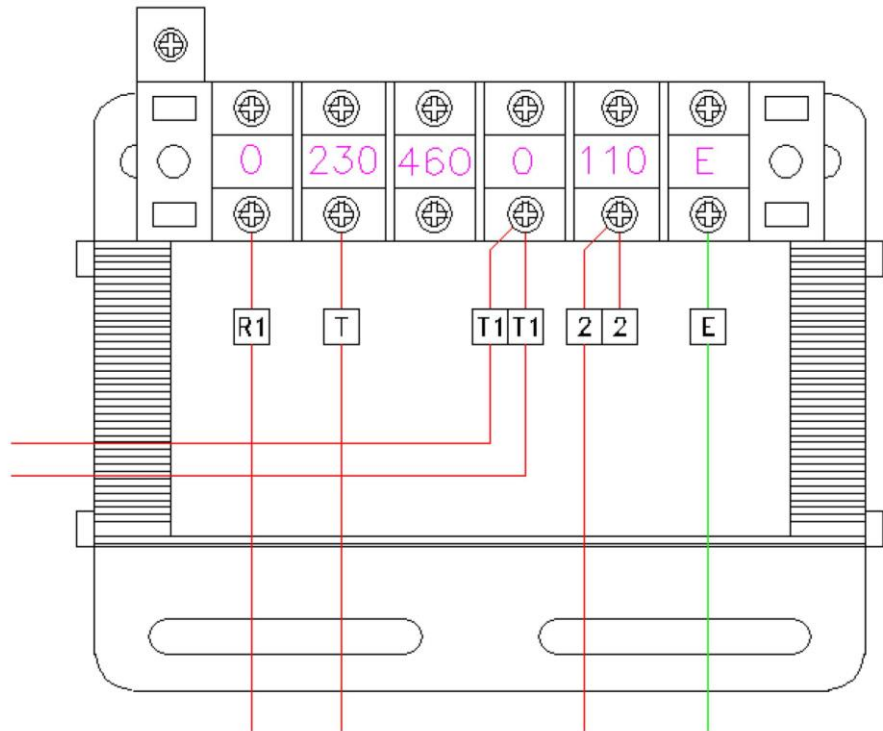


AVANI Top Mounted Dust Collector

Main Electrical Box Wiring For TMC-3-4

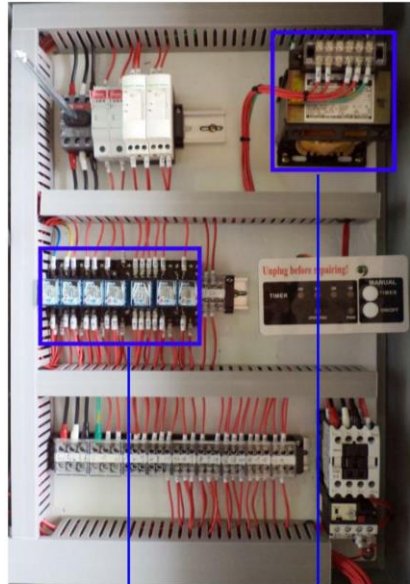
Part-B-4 :

Transformer



AVANI Top Mounted Dust Collector

Main Electrical Box Components for TMC-3-4



◆ Relay.



Part-B-3

◆ Transformer for 240V.

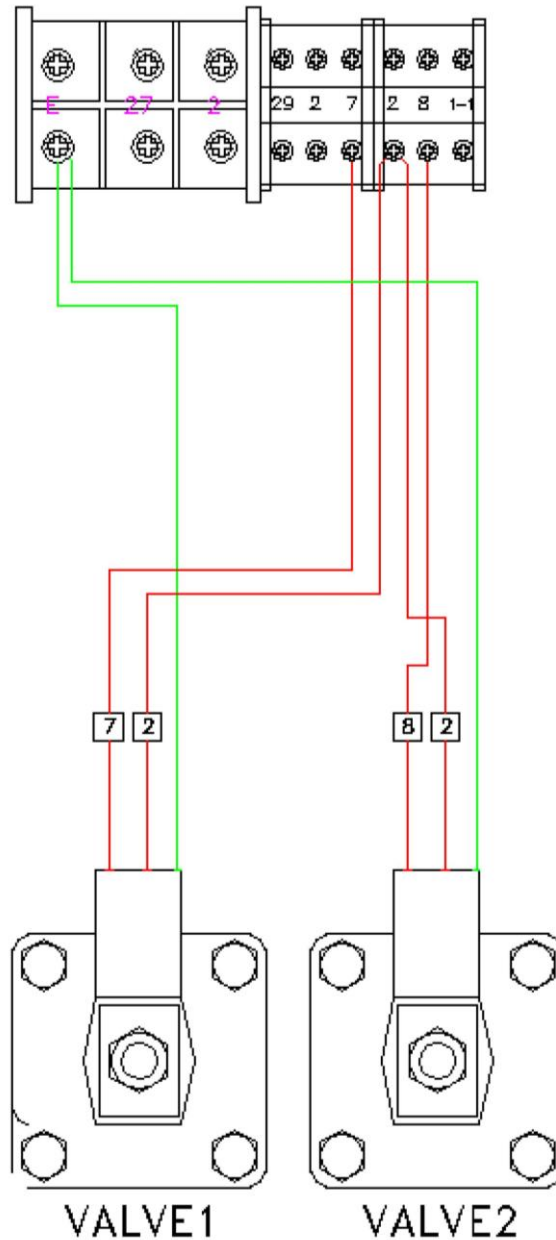


Part-B-4

AVANI Top Mounted Dust Collector

Main Electrical Box Wiring For TMC-3-4

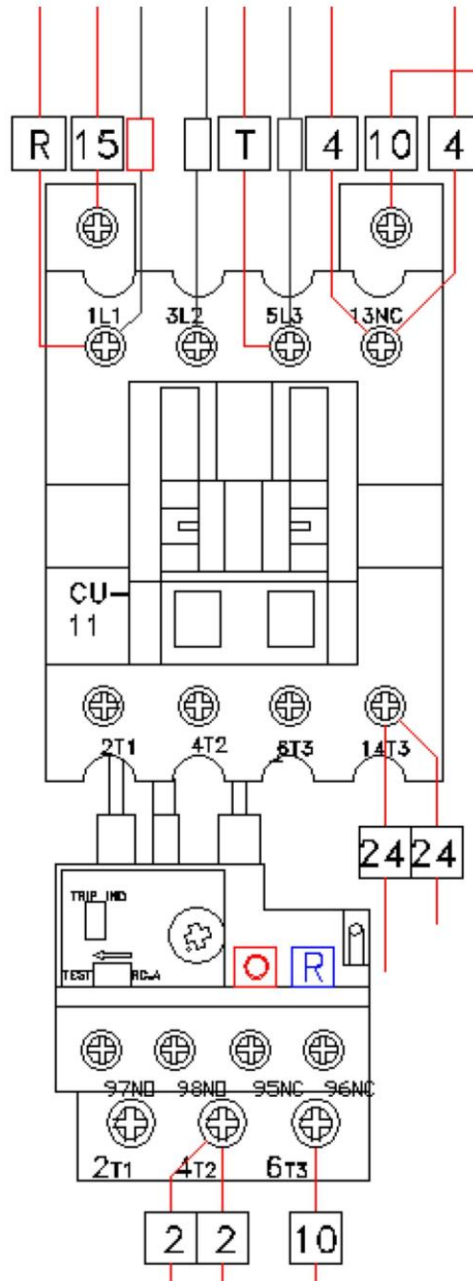
Part-B-5 :
valve



AVANI Top Mounted Dust Collector

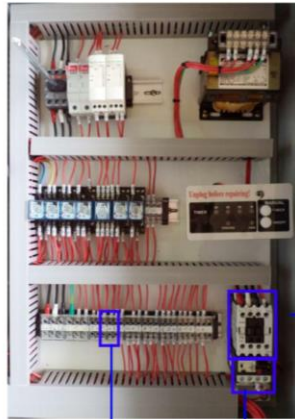
Main Electrical Box Wiring For TMC-3-4

Part-B-5 :
 Magnetic Contactor
 Thermal Relay



AVANI Top Mounted Dust Collector

Main Electrical Box Components for TMC-3-4



◆ Magnetic contactor.



◆ Air pulse jet system.



◆ Thermal Relay for motor of 3HP.



◆ Valve.

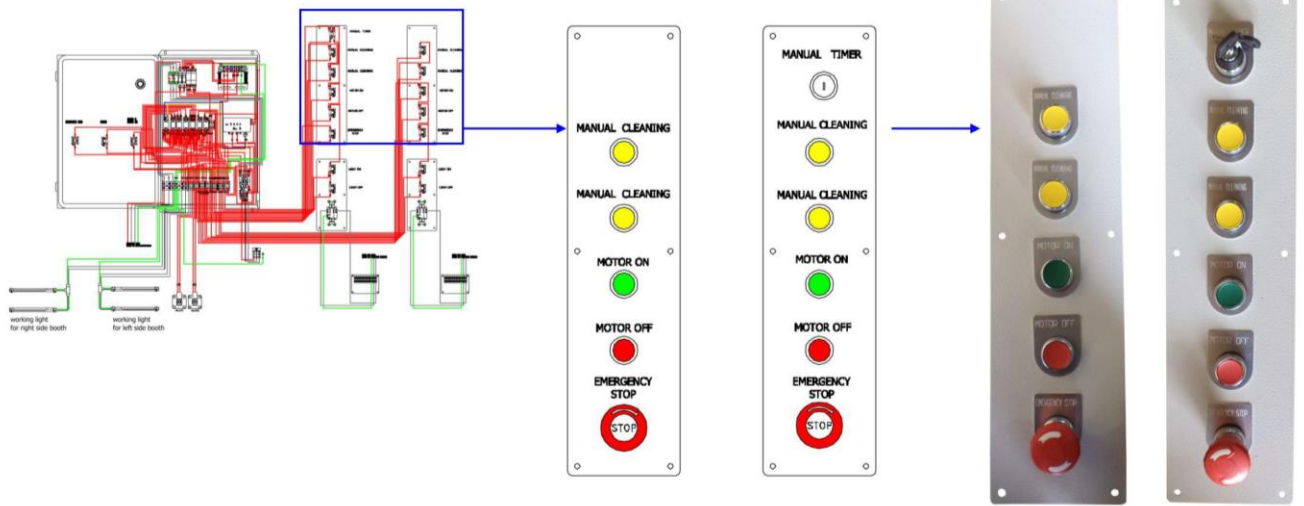


AVANI Top Mounted Dust Collector

Main Electrical Box Components for TMC-3-4

Part-C

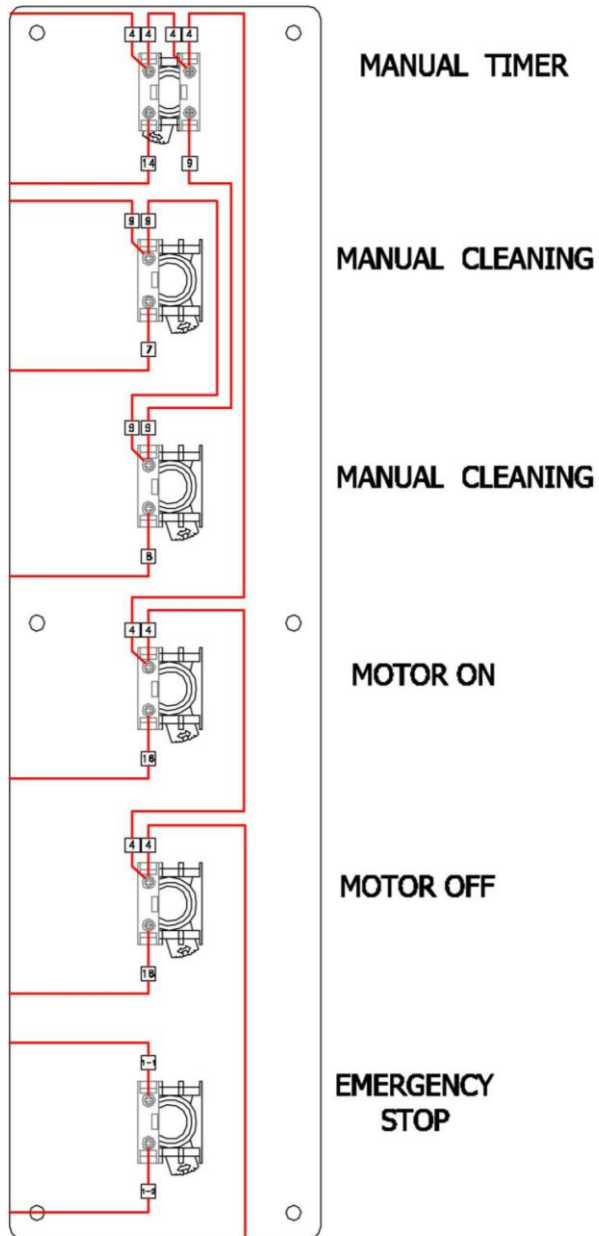
◆ Control Panel.



AVANI Top Mounted Dust Collector

Main Electrical Box Wiring For TMC-3-4

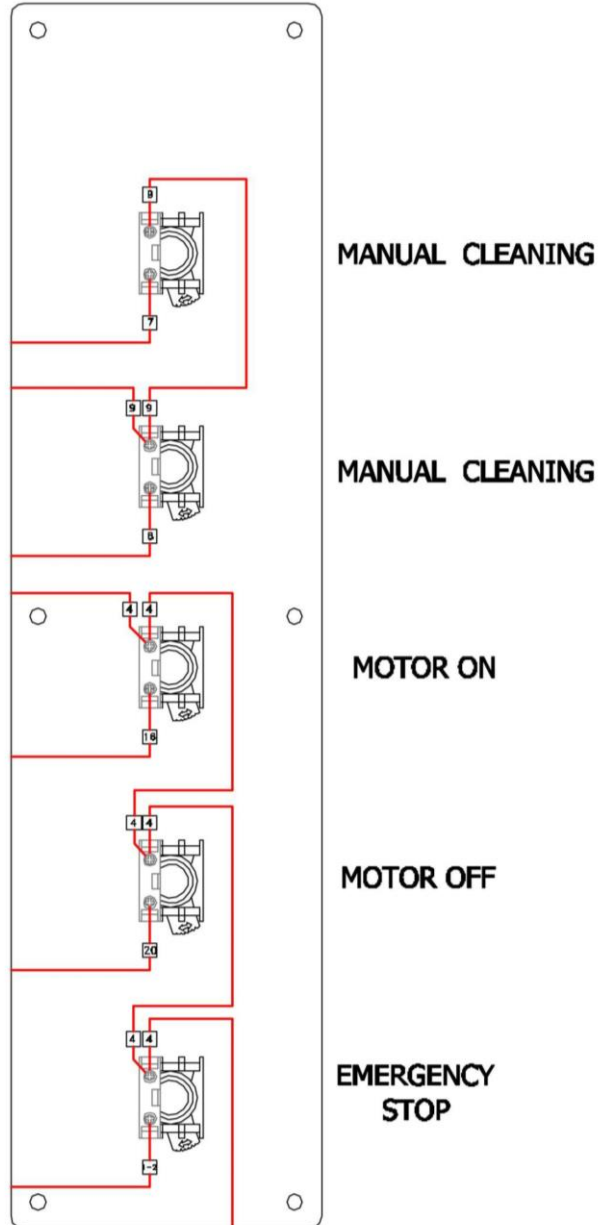
Part-C
Control Panel
(at the right
booth when
facing the
unit)



AVANI Top Mounted Dust Collector

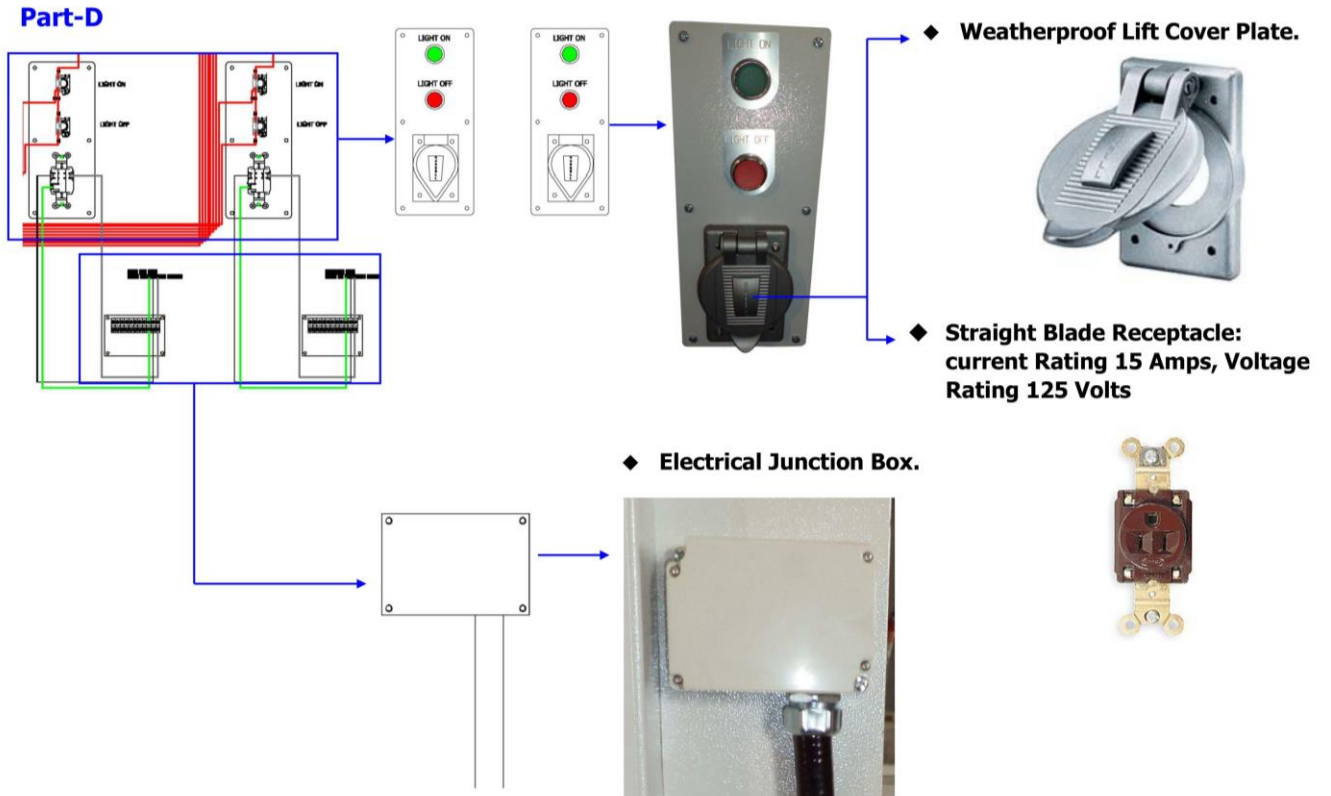
Main Electrical Box Wiring For TMC-3-4

Part-C
Control Panel
 (at the left
 booth when
 facing the
 unit)



AVANI Top Mounted Dust Collector

Main Electrical Box Components for TMC-3-4

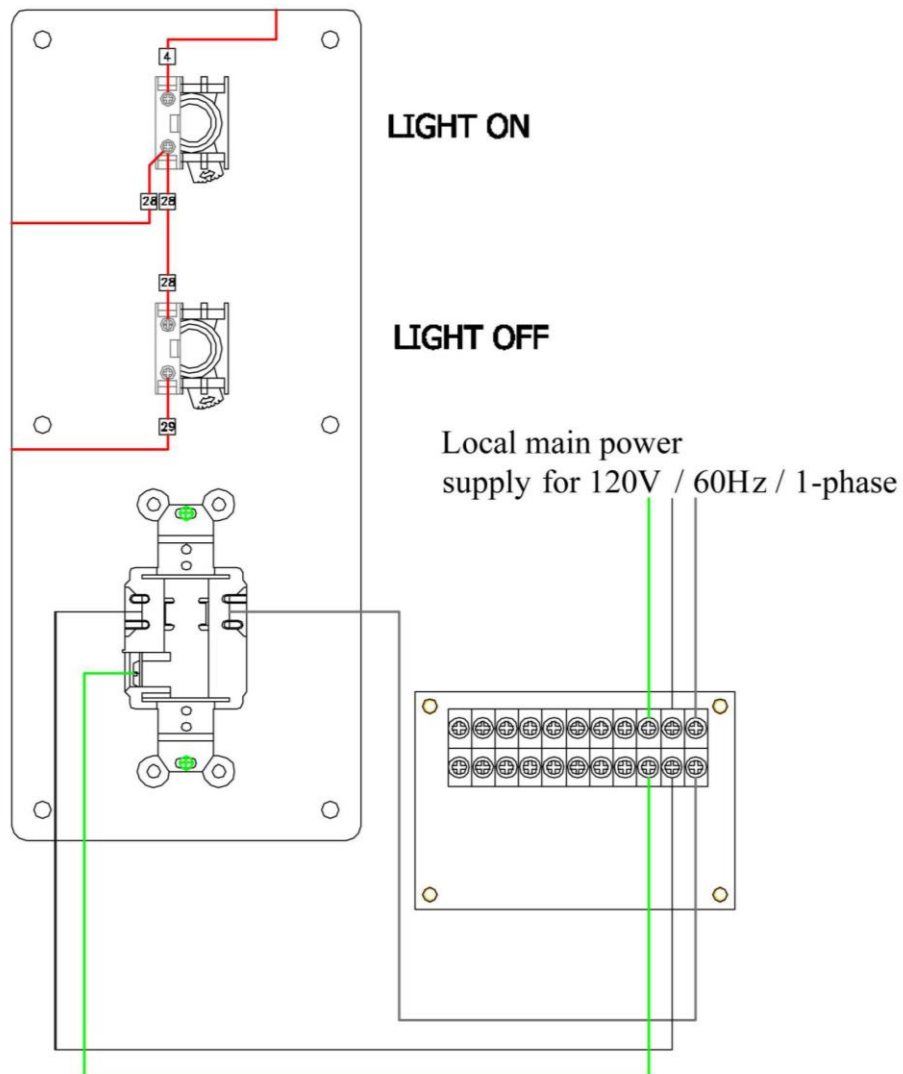


AVANI Top Mounted Dust Collector

Main Electrical Box Wiring For TMC-3-4

Part-D

Control Panel (at the right booth when facing the unit)

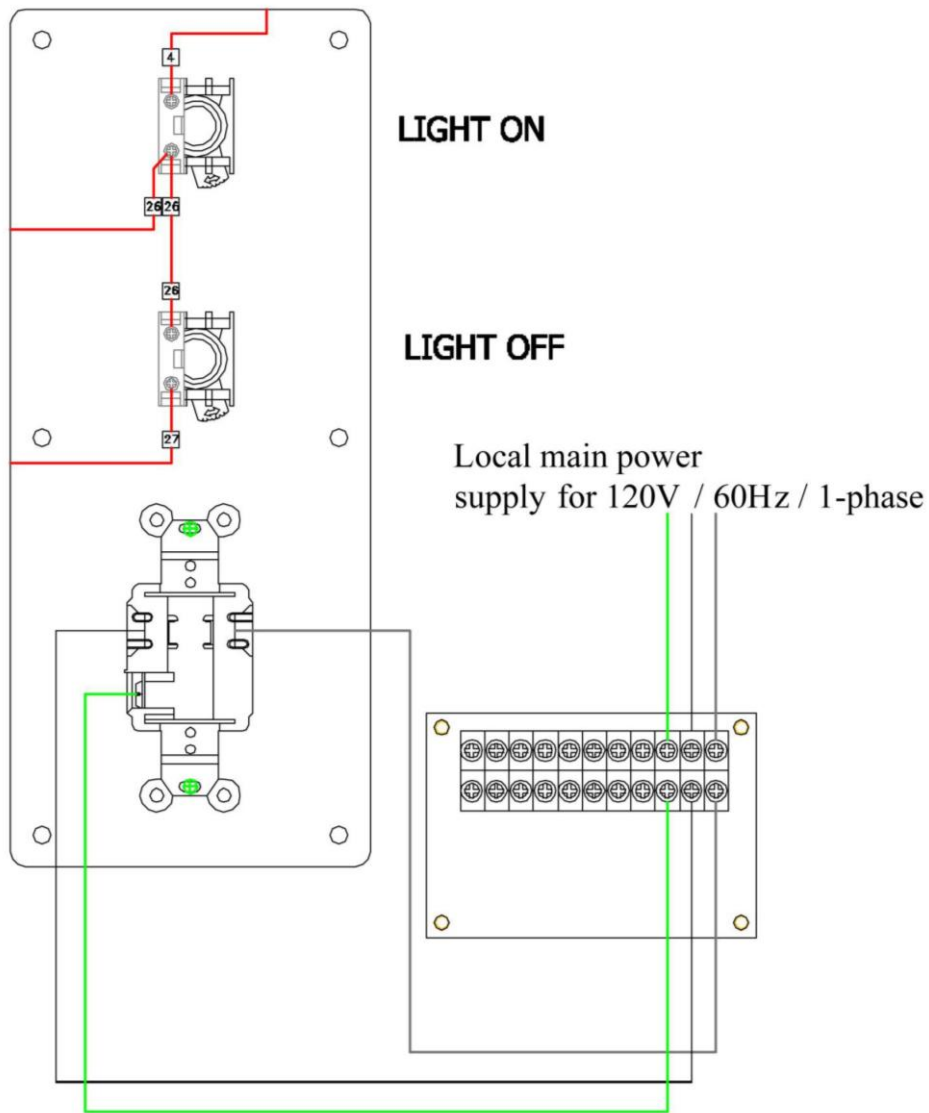


AVANI Top Mounted Dust Collector

Main Electrical Box Wiring For TMC-3-4

Part-D

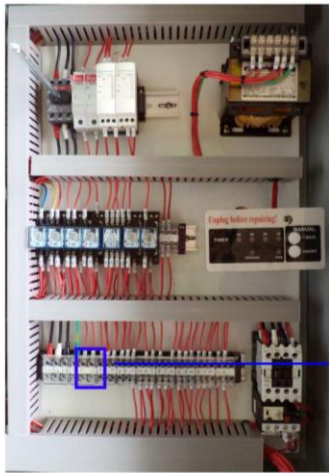
Control Panel (at the right booth when facing the unit)



AVANI Top Mounted Dust Collector

Main Electrical Box Components for TMC-3-4

Part-E



◆ Connection to the light.



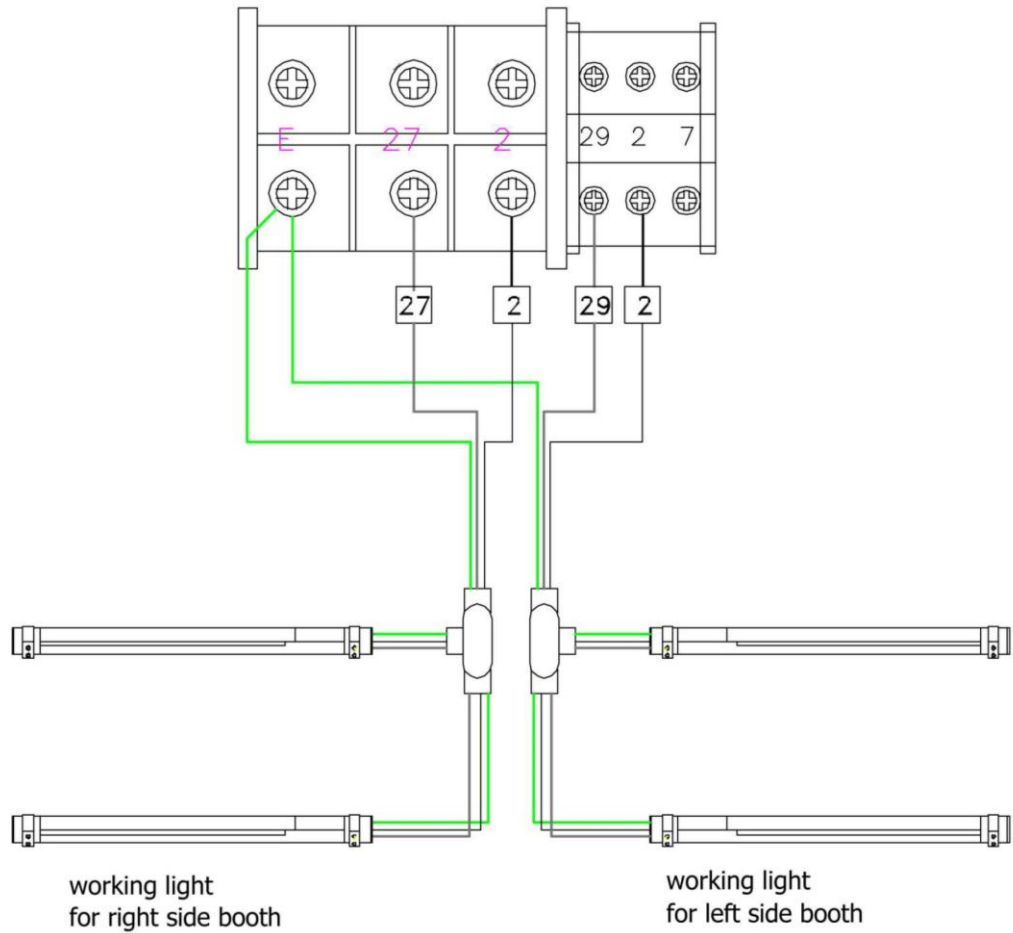
◆ LED for 110V.



AVANI Top Mounted Dust Collector

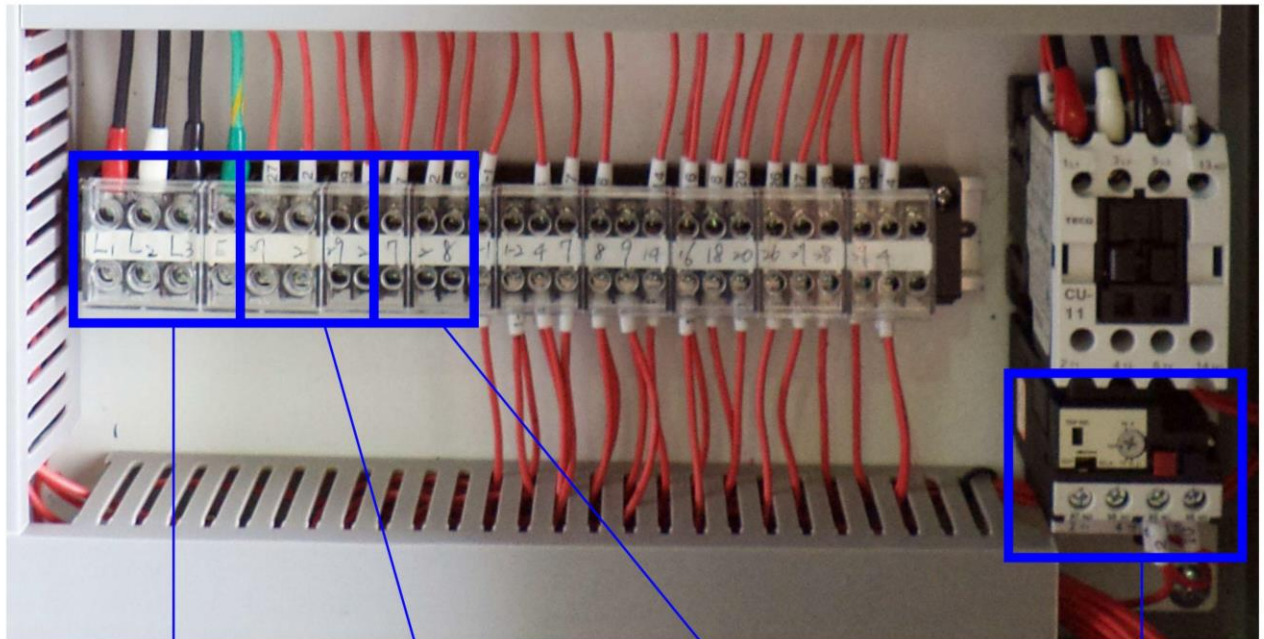
Main Electrical Box Wiring For TMC-3-4

Part-E



AVANI Top Mounted Dust Collector

Control Box for TMC-3-4

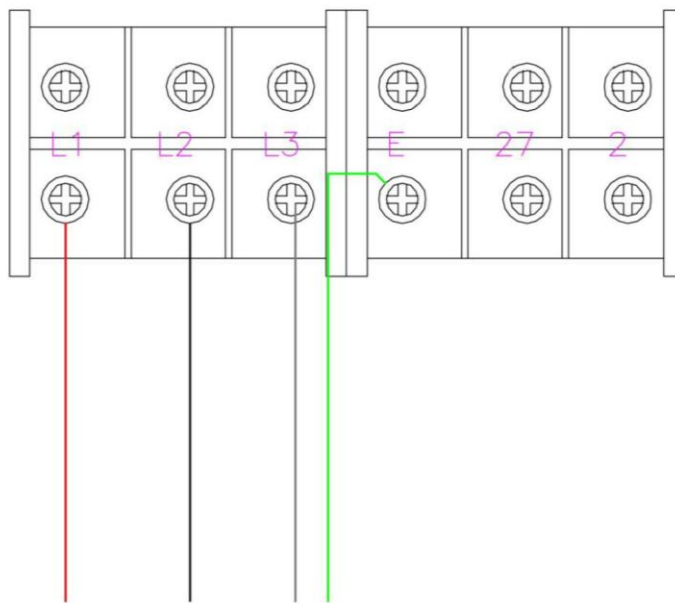


- Connect to main power supply for 240V / 60HZ / 3 Phase.
- Connect to working light
- Connect to valve
- Connect to motor

AVANI Top Mounted Dust Collector

Control Box for TMC-3-4

- Connect to main power supply for 240V / 60HZ / 3 Phase.

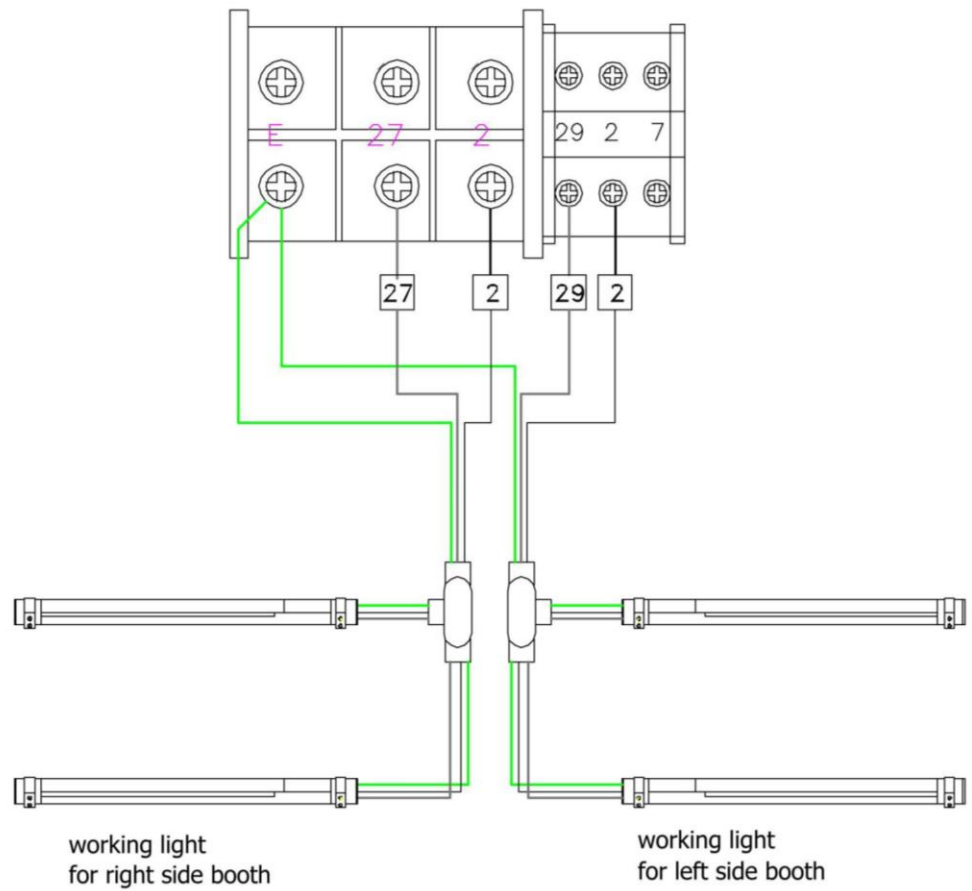


Local main power
supply for 240V / 60Hz / 3-phase

AVANI Top Mounted Dust Collector

Control Box for TMC-3-4

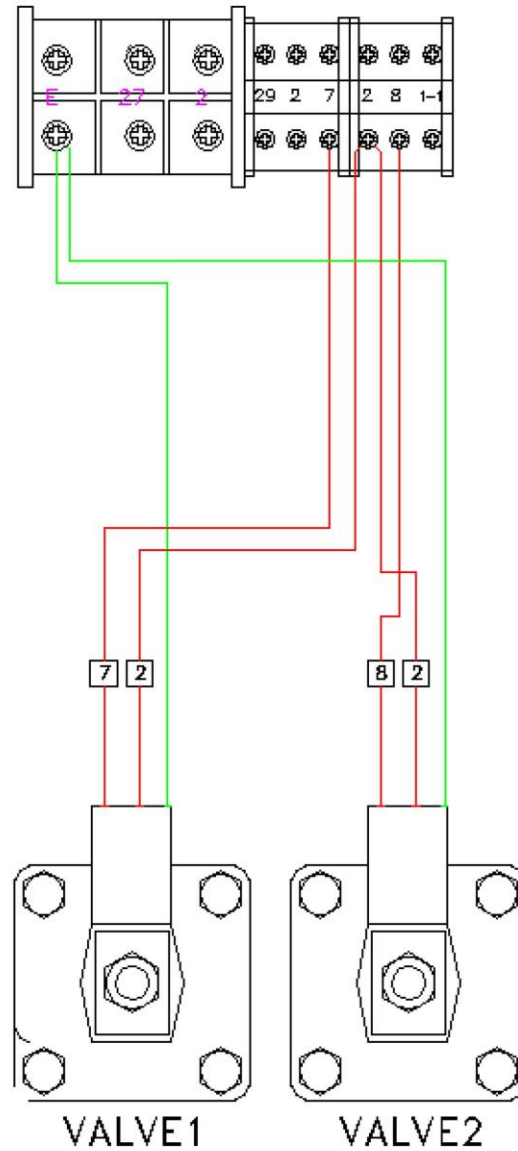
- **Connect to working light**



AVANI Top Mounted Dust Collector

Control Box for TMC-3-4

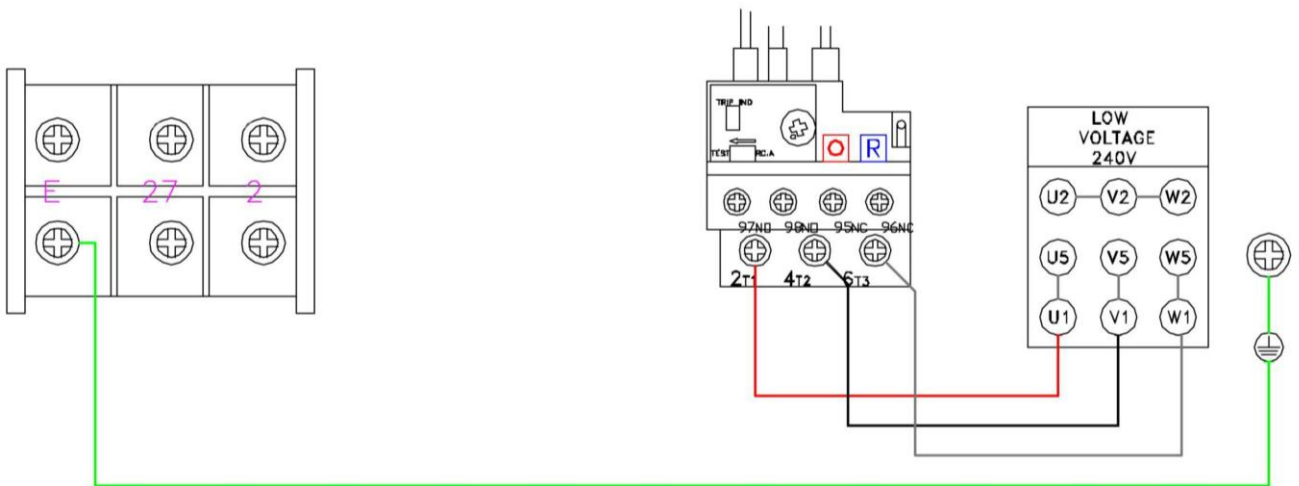
➤ Connect to valve



AVANI Top Mounted Dust Collector

Control Box for TMC-3-4

➤ Connect to motor



AVANI Top Mounted Dust Collector

Contact Information

Avani Environmental Intl. Inc.
95 Cypress Drive,
Youngsville, NC 27596
Email: info@avanienvironmental.com
www.avanienvironmental.com

Customer Service: info@avanienvironmental.com
Tel: 919-570-2862 ext. 5167

Engineering Service: engineering@avanienvironmental.com
Tel: 919-570-2862 ext. 5162