

DO NOT SCALE

JF IN DOUBT ASK



# Johnson Controls

## w/ silencer

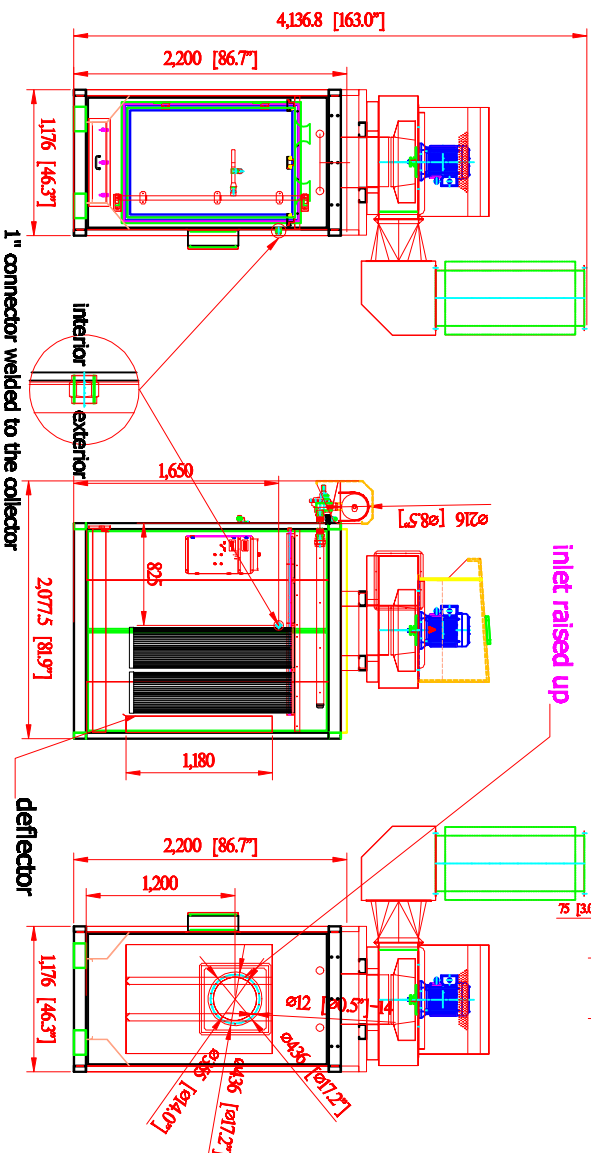
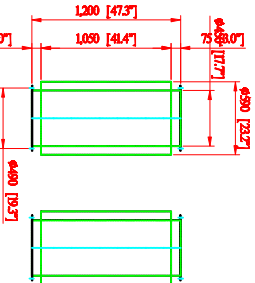
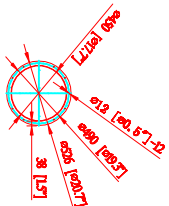
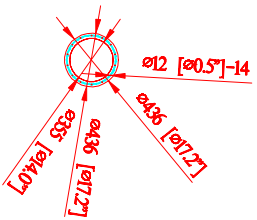
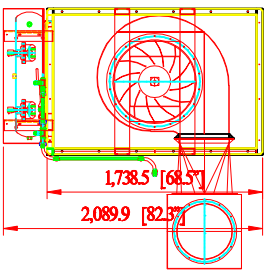
po# 2981

Rev	Description	Date	Approval

### Revisions

- SDC-10-8MD SPECIFICATION -

- Direct Drive Blower (on the machine top)
- Motor: 10HP x 1 pc
- CFM: 4,400 ft3/min @ 8" SP
- Include:
  - UL Individual Control Box for Cartridge Collector and Blower



- \*\*\*Inlet: 14"
- Cartridge Filter: Dia. 325mm x 1320mm x 8pcs (Dia. 12.8" x 52" x 8pcs)
- Material: Polyester with TEFLON coating.
- Filter Area: 19m<sup>2</sup> x 8 = 152m<sup>2</sup> (1635.52 ft<sup>2</sup>)
- Pleat Depth: 48mm
- Horizontal Positioned Filters, Continuous Welded Seams, Gasket and Latched Doors, Powder Coated Paint and Reverse Jet Pulse Cleaning
- Include:
  - Filter Chamber
  - Inlet Square Pipe (need dimensions)
  - No. of Valves: 2
- Inlet Air: 4" <sup>3</sup>
- Compressed Air Requirement: 90 PSI
- Compressed Air Reservoir: 7.9 gallon
- Dimension: 46.3" x 81.9" x 163" (1176 x 2077.5 x 4136.8mm)
- Construction: 13 Gauge for panel; 11 Gauge Steel Cabinet
- Max. Operating Temp.: 120 °
- Paint Color: Blue
- \*\*\*w/ silencer (dia. 450mm x 1200mm)\*\*\*
- \*\*\*(1) control panel controls pulse system and blower.

AVANTI ENVIRONMENTAL INTL. INC. Sales Department  
 95 Cypress Drive  
 Youngsville, NC 27596  
 (919) 570-2862  
 info@avantienvironmental.com

Drawn by:	Date:	Name:
2011-03-24	***	***

Part Number:
SDC-10-8MD

Title:	Size	Scale	Drawing Number:
Cartridge Collector (mezzanine drawer type)	A	1 = 1	SVL-890-01

The drawings, AutoCAD, 3-D Models, and specifications are the property of Avant Environmental Intl. Inc. (AVI) and may not be reproduced, distributed, modified, or otherwise used, except provided herein, without the express written permission of AVI.