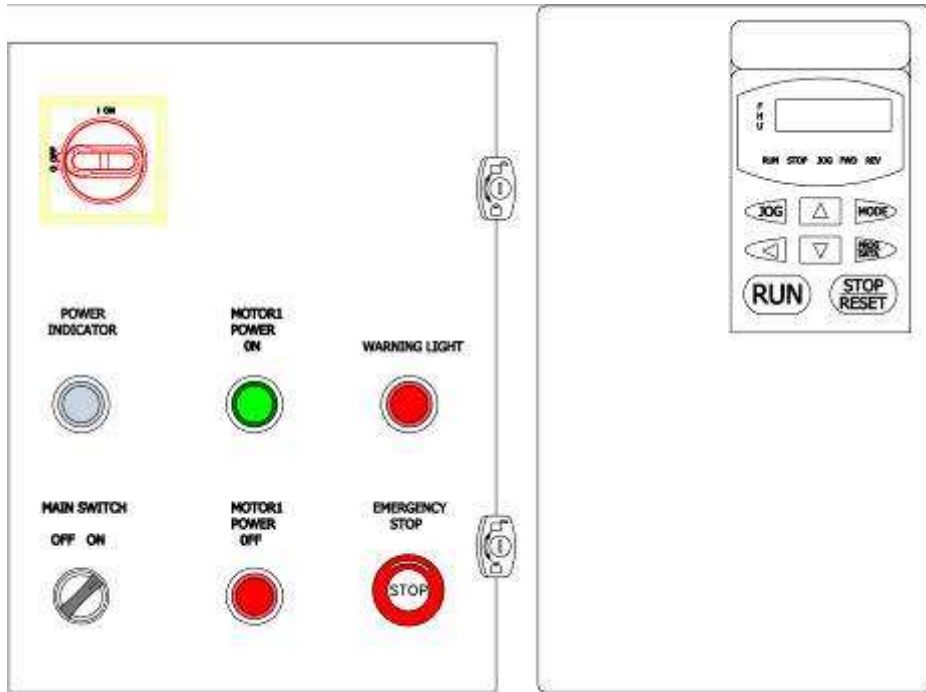
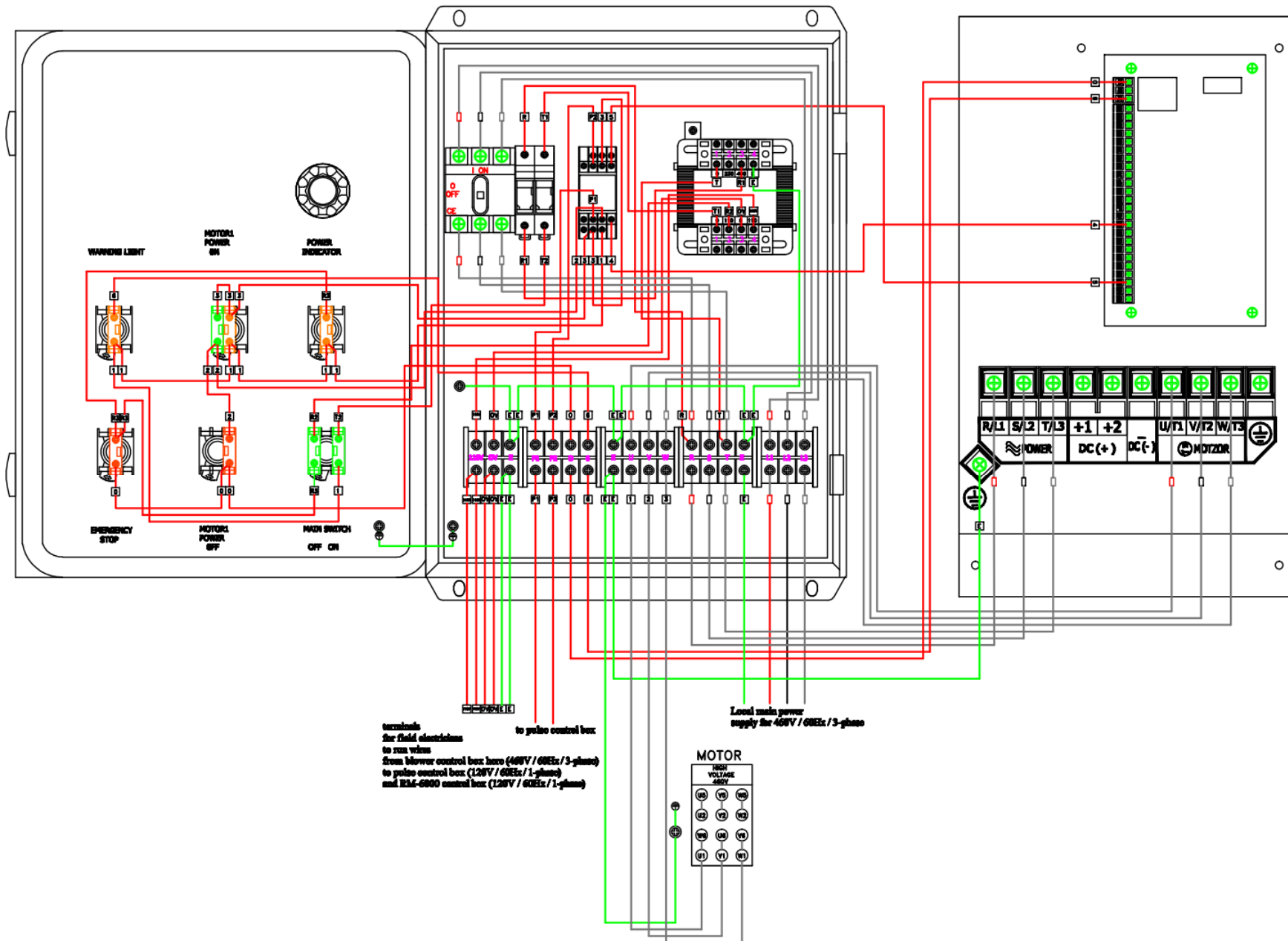


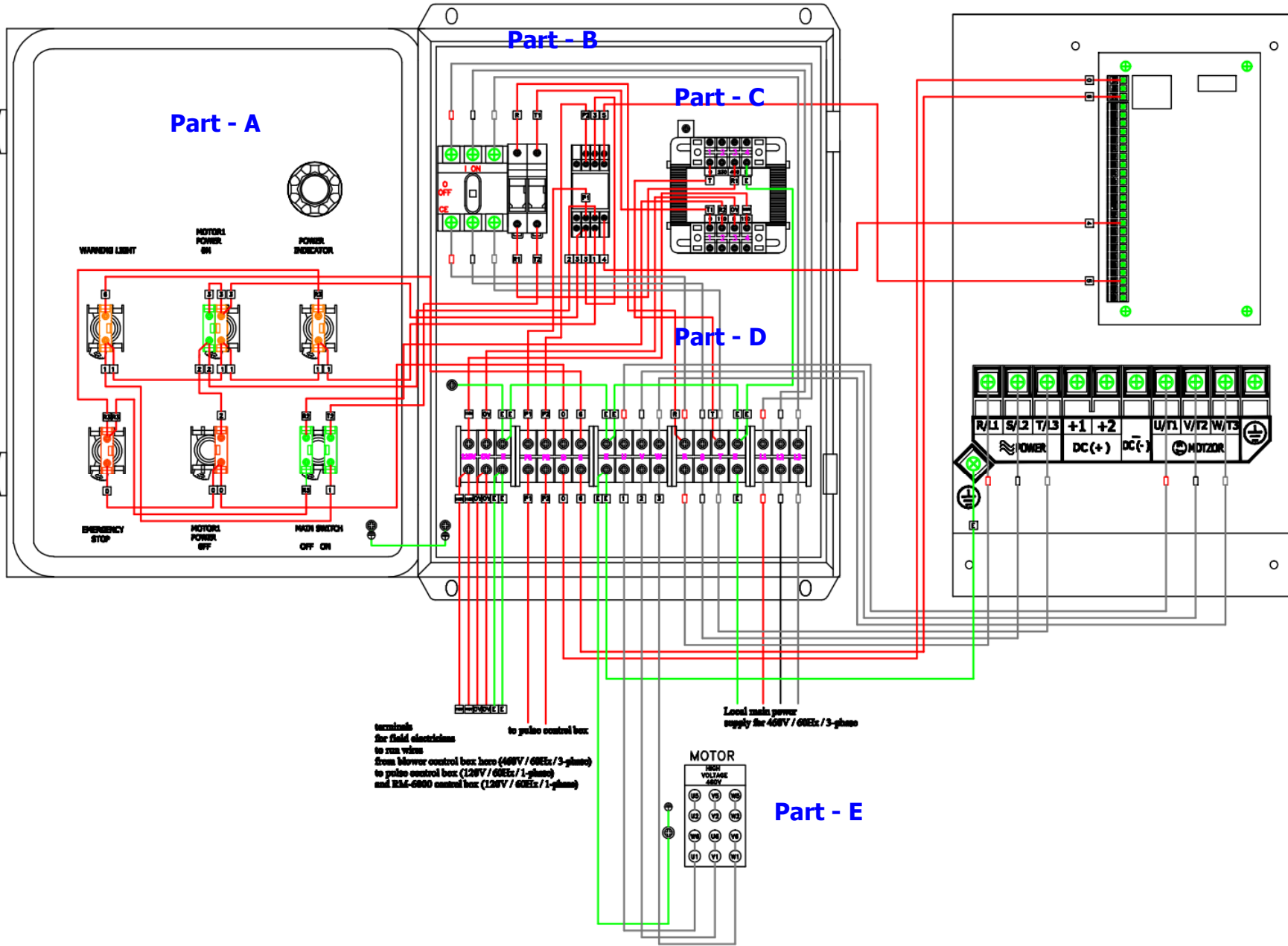
Main Electrical Components for SDC-20-16MDF Blower Control Box



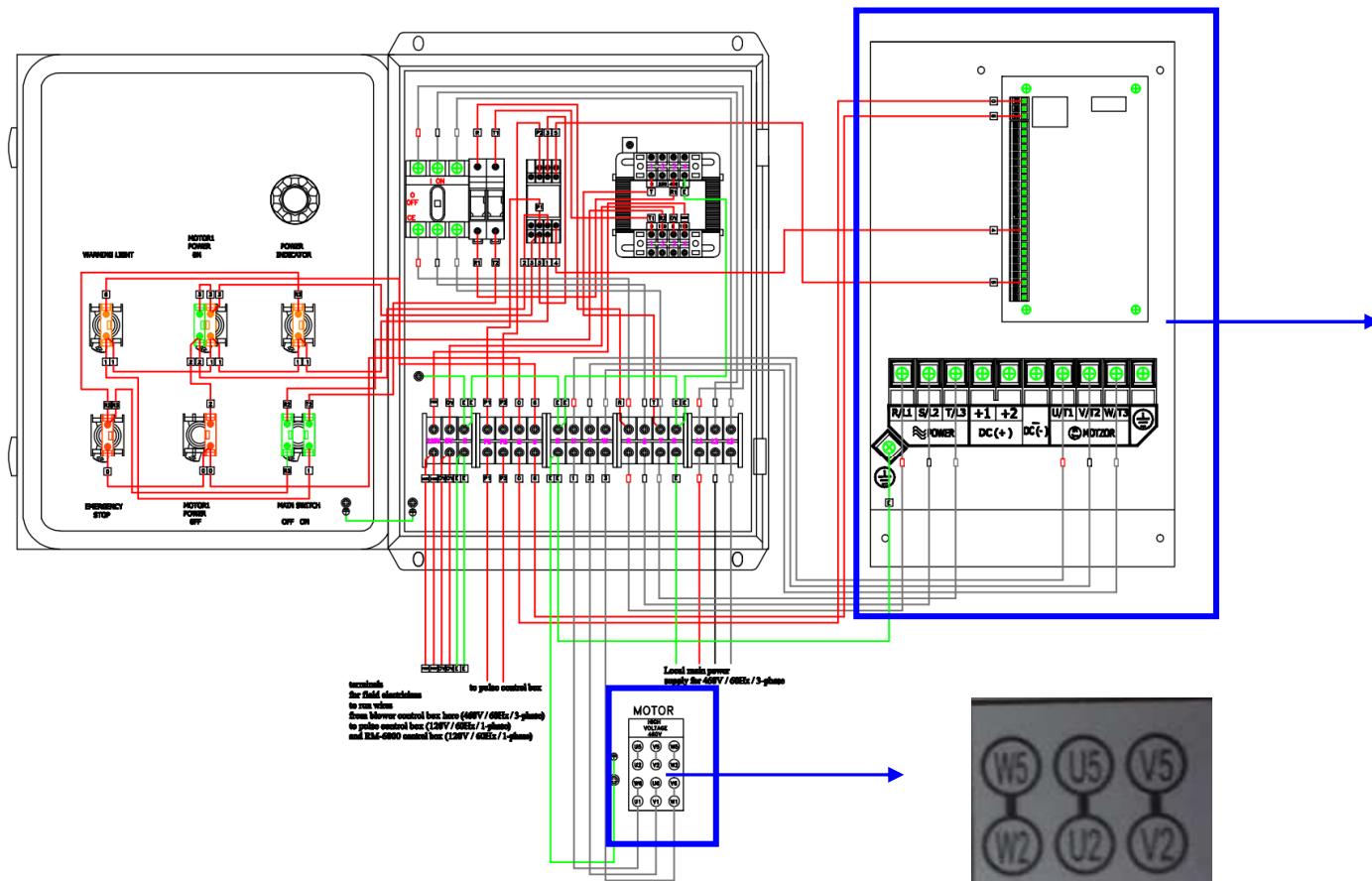
Main Electrical Components for SDC-20-16MDF Blower Control Box



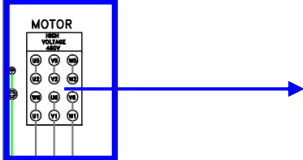
Main Electrical Components for SDC-20-16MDF Blower Control Box



Main Electrical Components for SDC-20-16MDF Blower Control Box

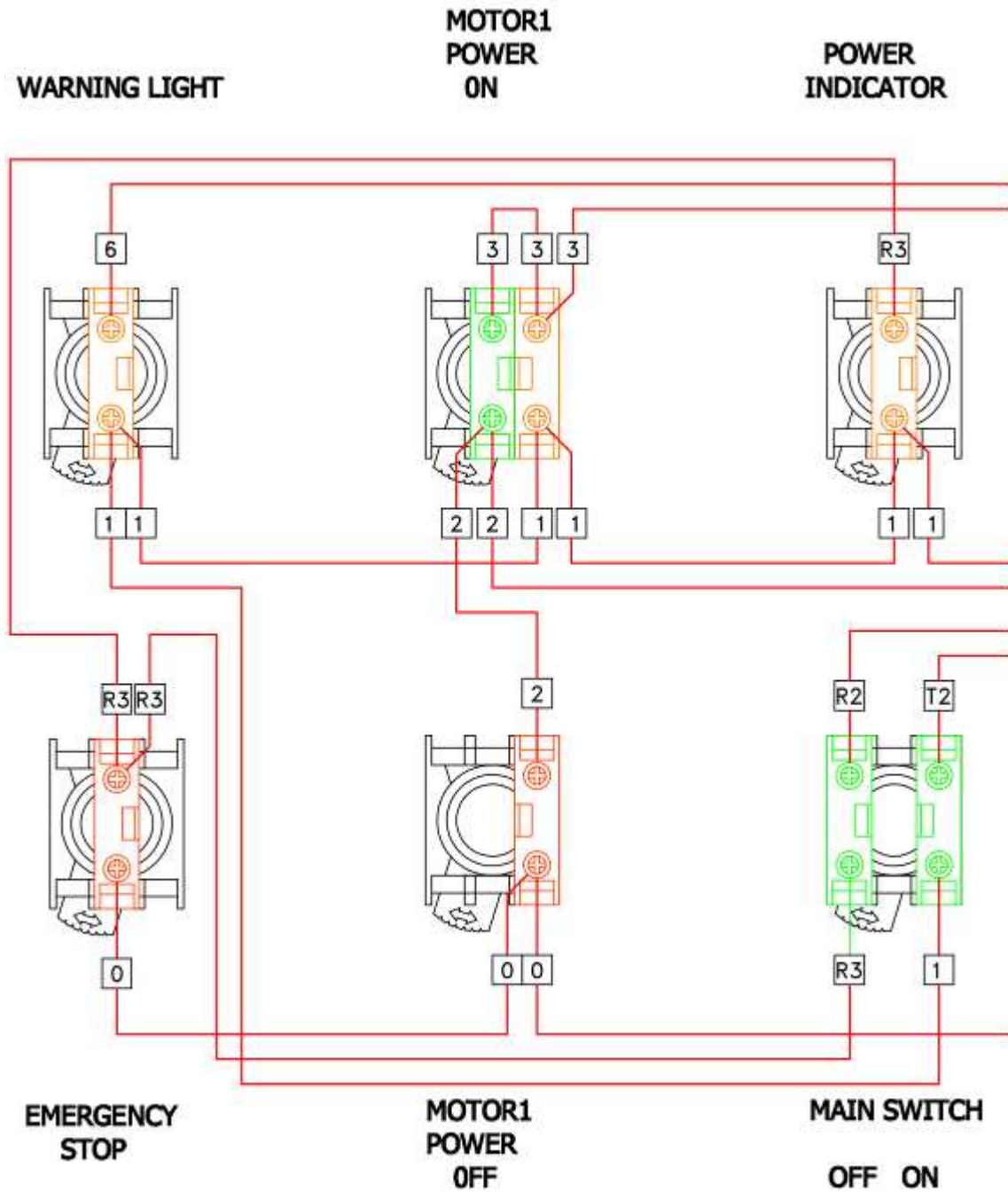


WARNING:
 See field instructions
 for run values
 Some blower control box (480V / 60Hz / 3-phase)
 to yellow control box (120V / 60Hz / 1-phase)
 and 224-0000 control box (120V / 60Hz / 1-phase)



Main Electrical Components for SDC-20-16MDF Blower Control Box

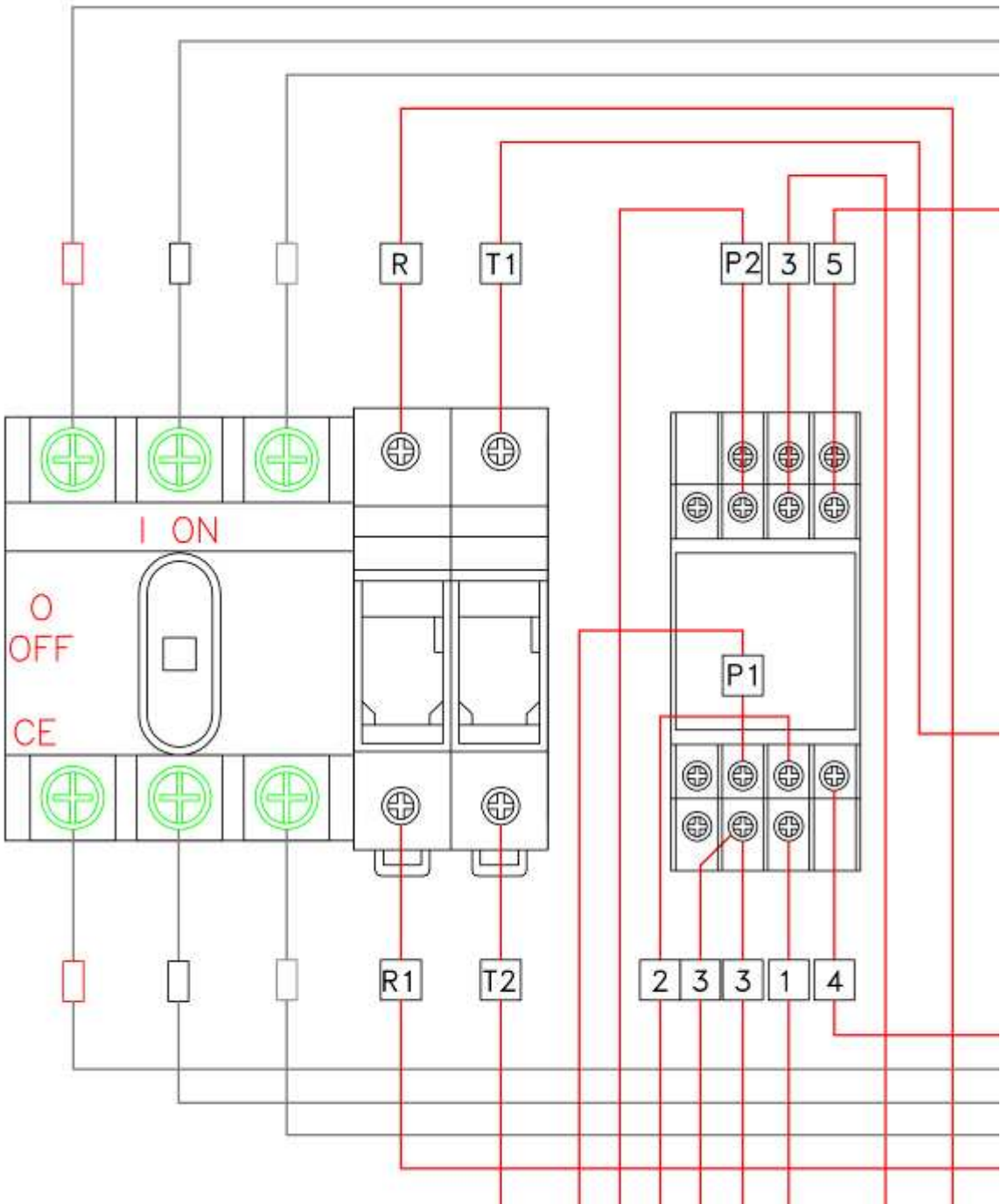
Part - A



Main Electrical Components for SDC-20-16MDF Blower Control Box

Part - B

- Panel disconnect switch
- Fuse bus
- Relay



Main Electrical Components for SDC-20-16MDF Blower Control Box



◆ Relay.



◆ Panel disconnect switch.

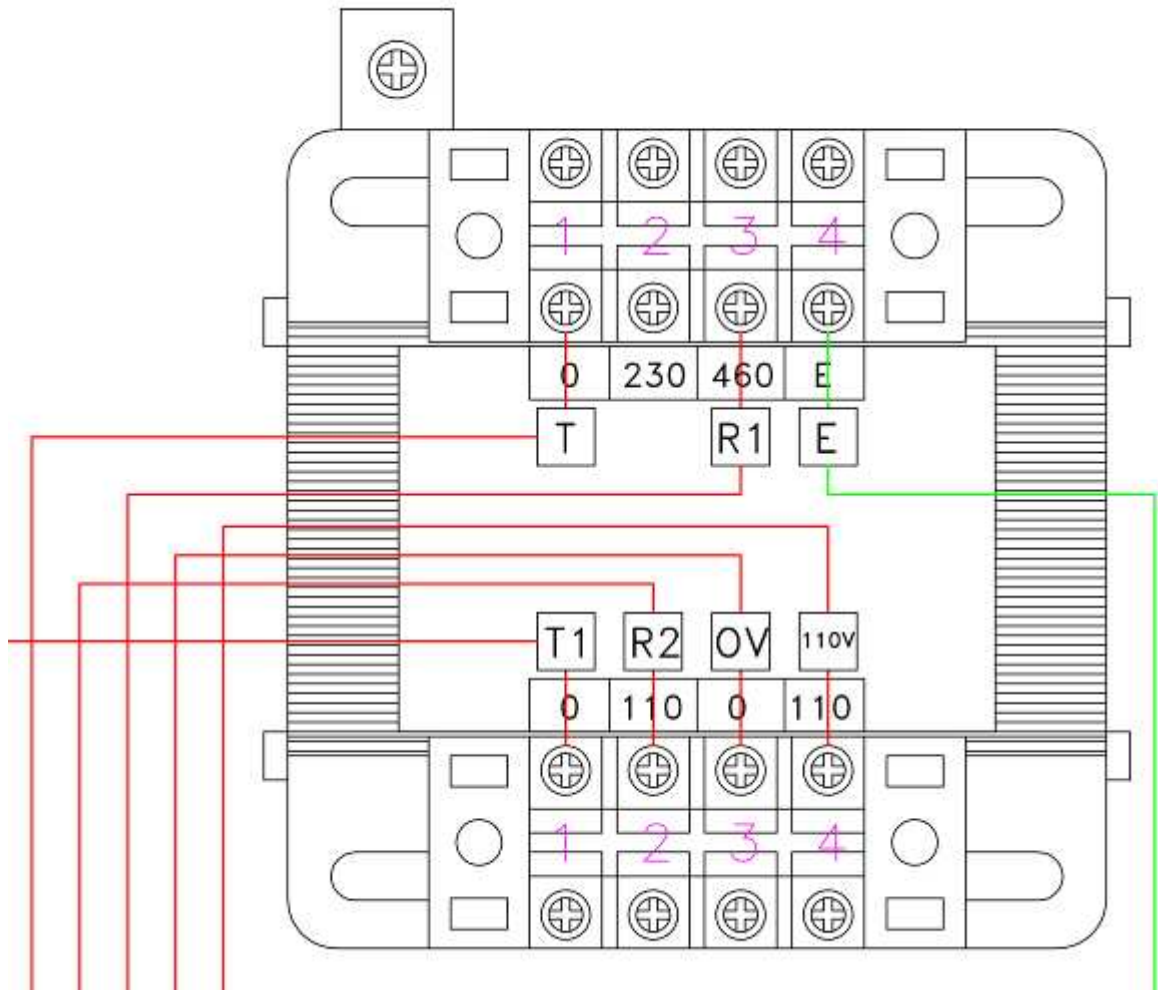


◆ Fuse bus.

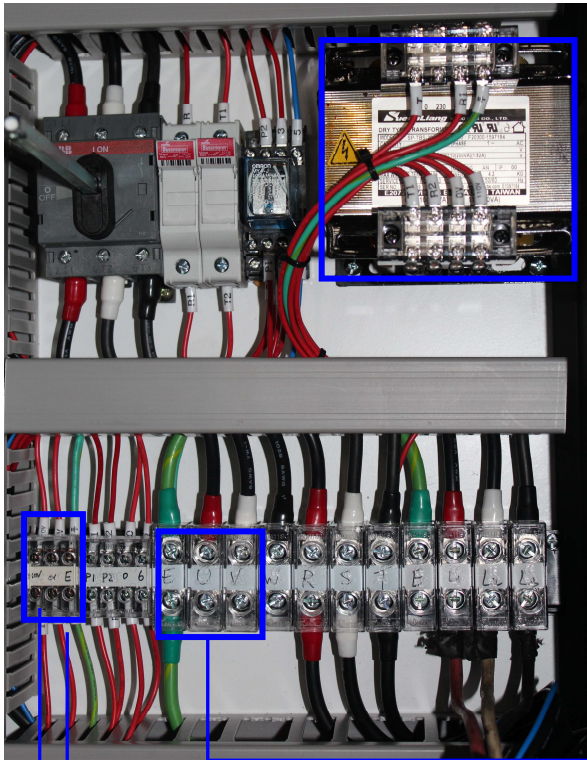


Main Electrical Components for SDC-20-16MDF Blower Control Box

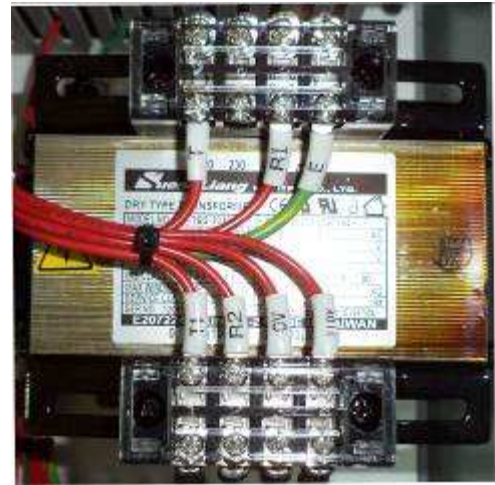
Part - C Transformer



Main Electrical Components for SDC-20-16MDF Blower Control Box



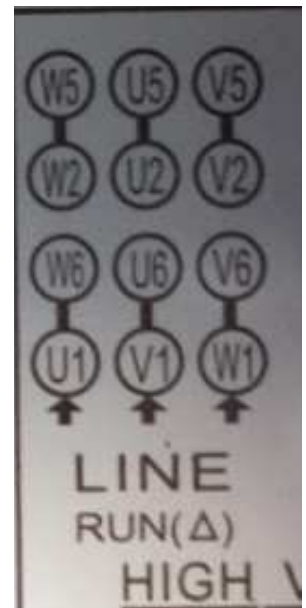
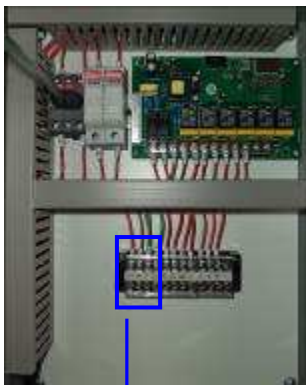
◆ Transformer for 460V.



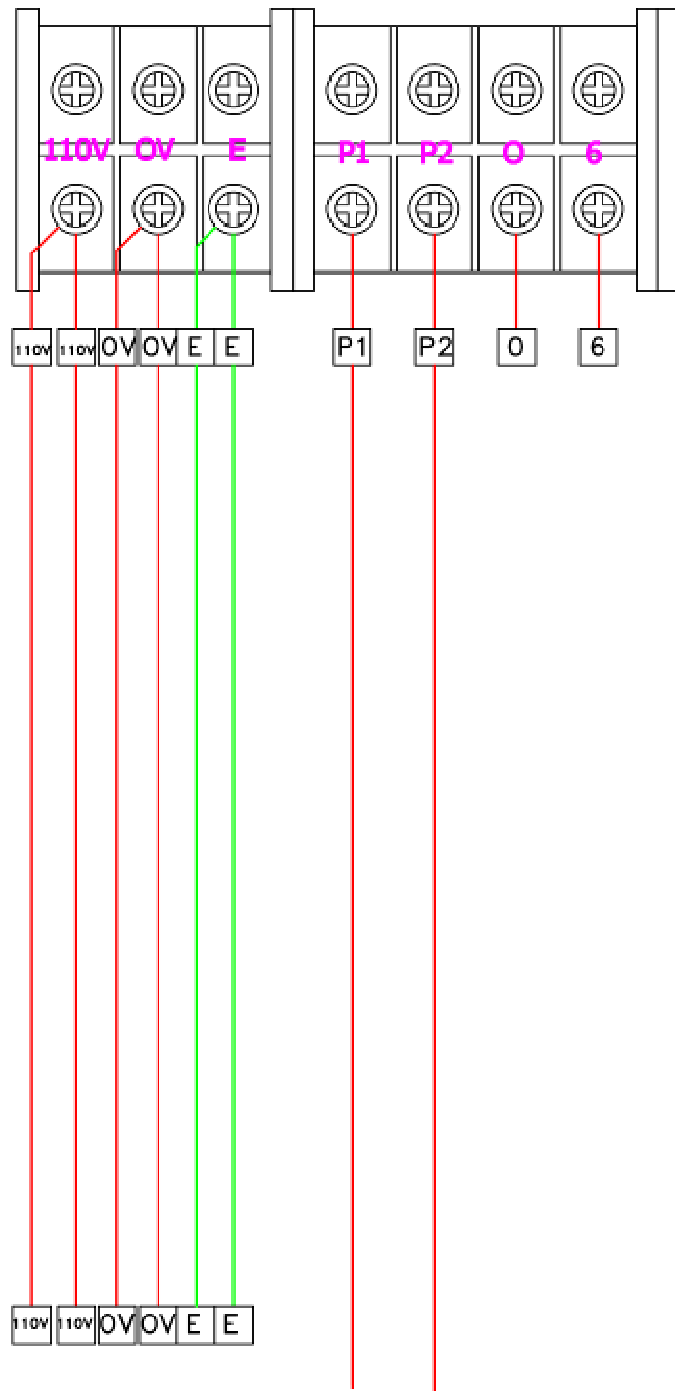
◆ Connecting to the pulse control box.

◆ Connecting to the RM-6000 control box.

◆ Connecting to motor.



Main Electrical Components for SDC-20-16MDF Blower Control Box



terminals
for field electricians
to run wires

to pulse control box

from blower control box here (460V / 60Hz / 3-phase)
to pulse control box (120V / 60Hz / 1-phase)
and RM-6000 control box (120V / 60Hz / 1-phase)

Main Electrical Components for SDC-20-16MDF Blower Control Box

