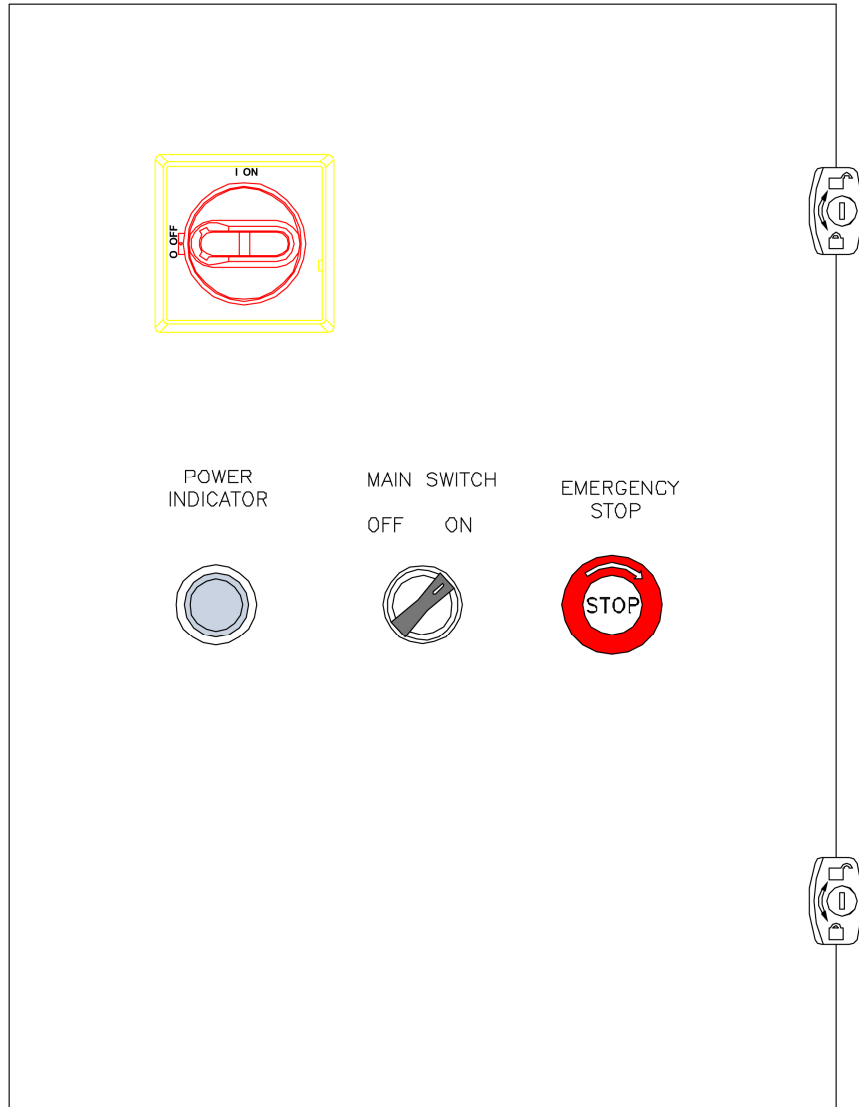
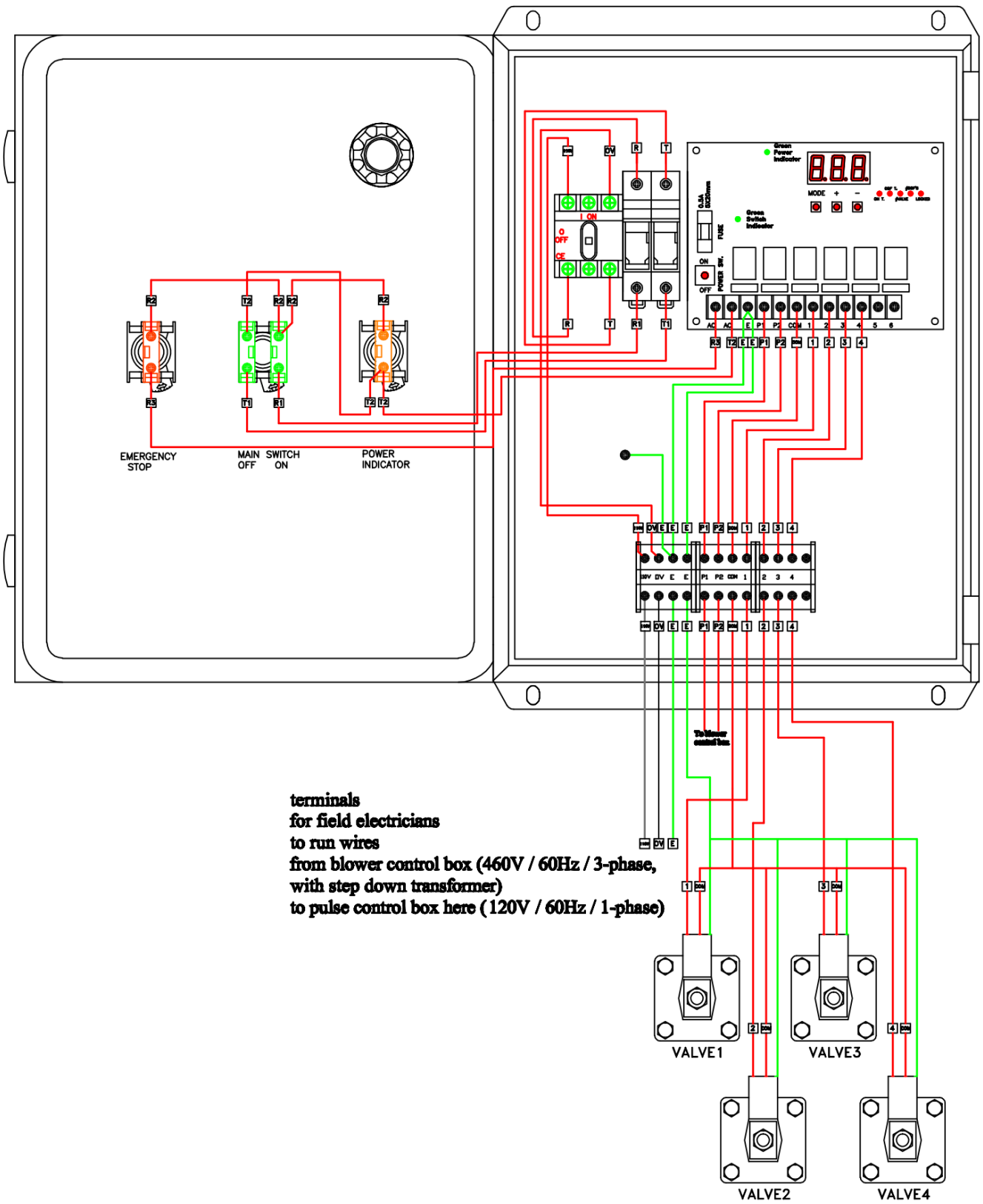


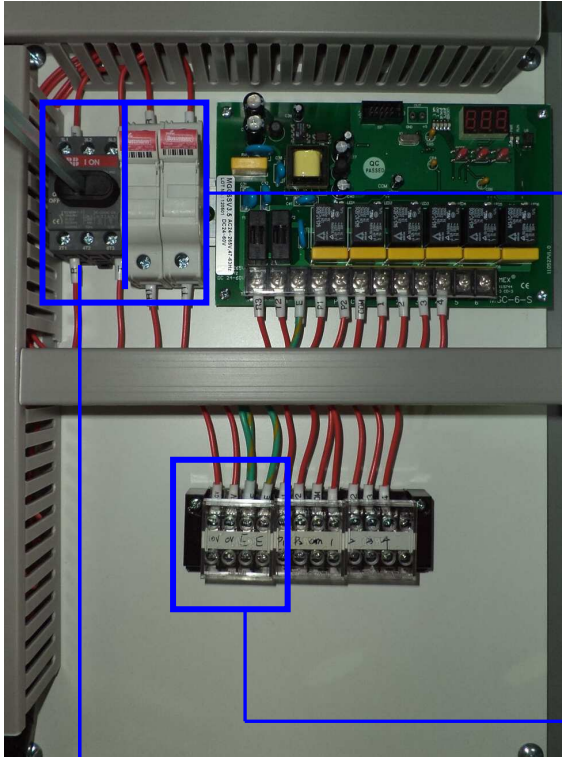
Main Electrical Wiring for SDC-20-16MDF Pulse Control Box



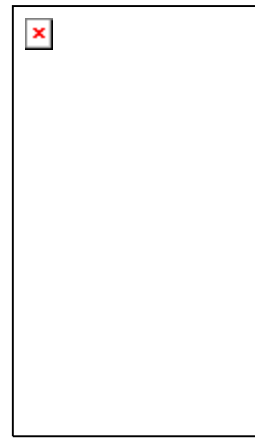
Main Electrical Wiring for SDC-20-16MDF Pulse Control Box



Main Electrical Components for SDC-20-16MDF Pulse Control Box



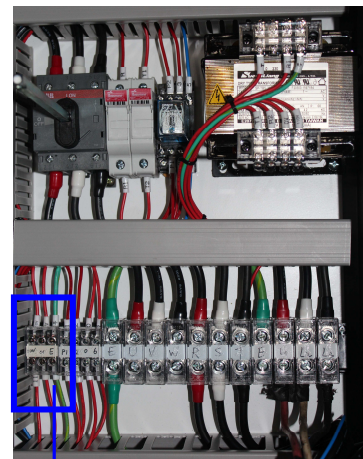
◆ Fuse bus.



◆ Panel disconnect switch.

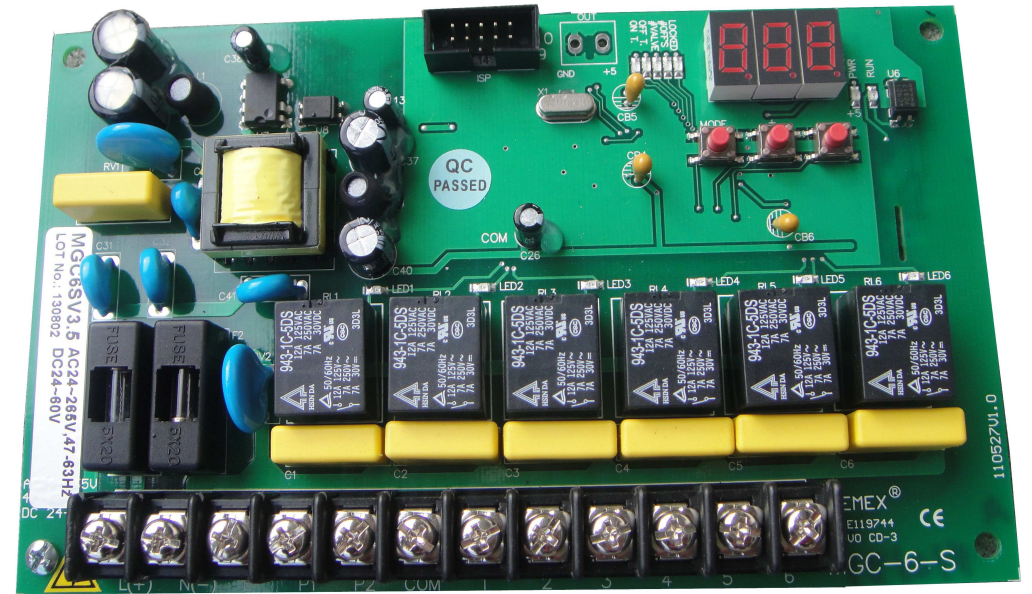


◆ Connecting to the blower control box.

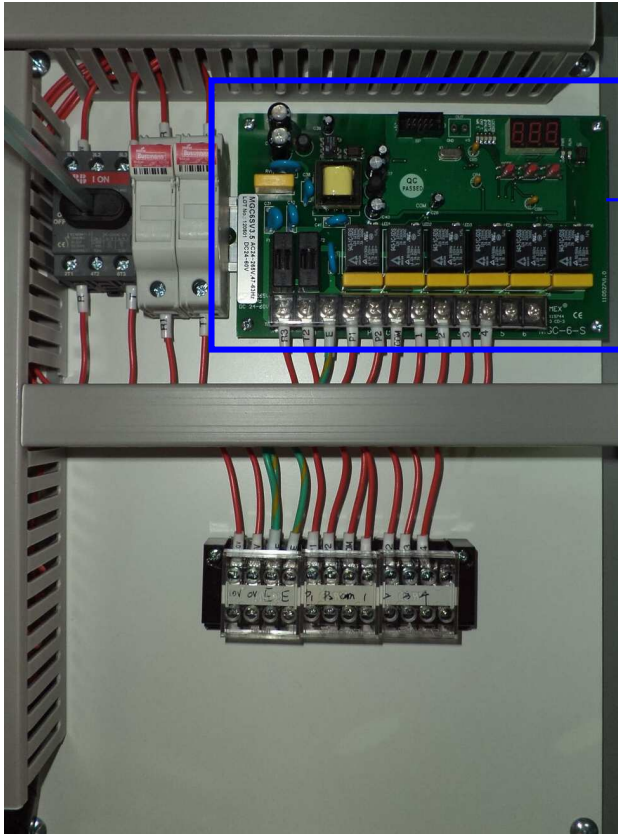
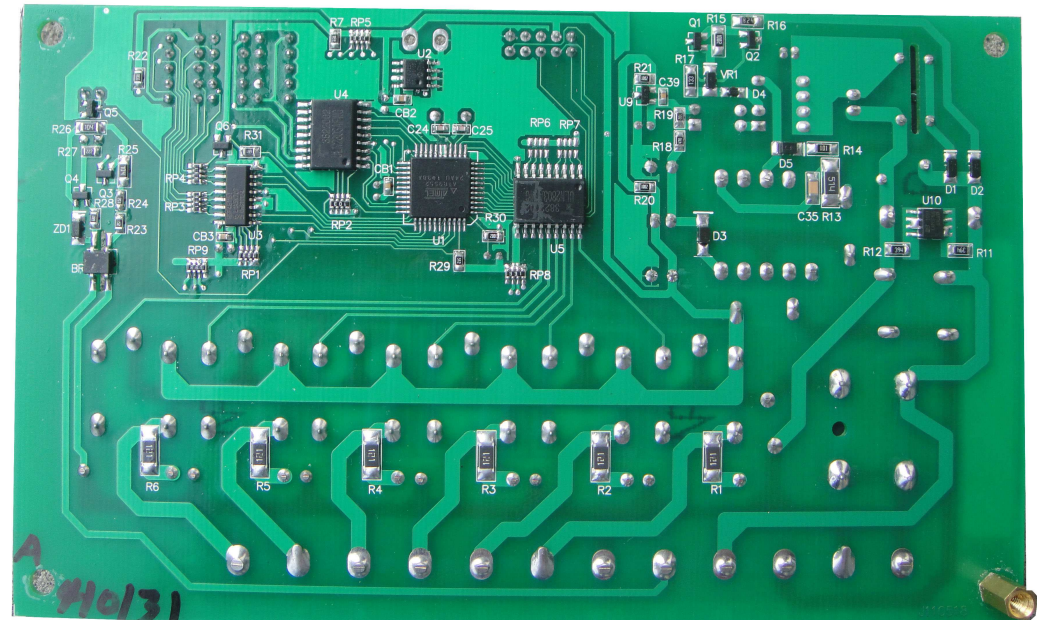


Main Electrical Components for SDC-20-16MDF Pulse Control Box

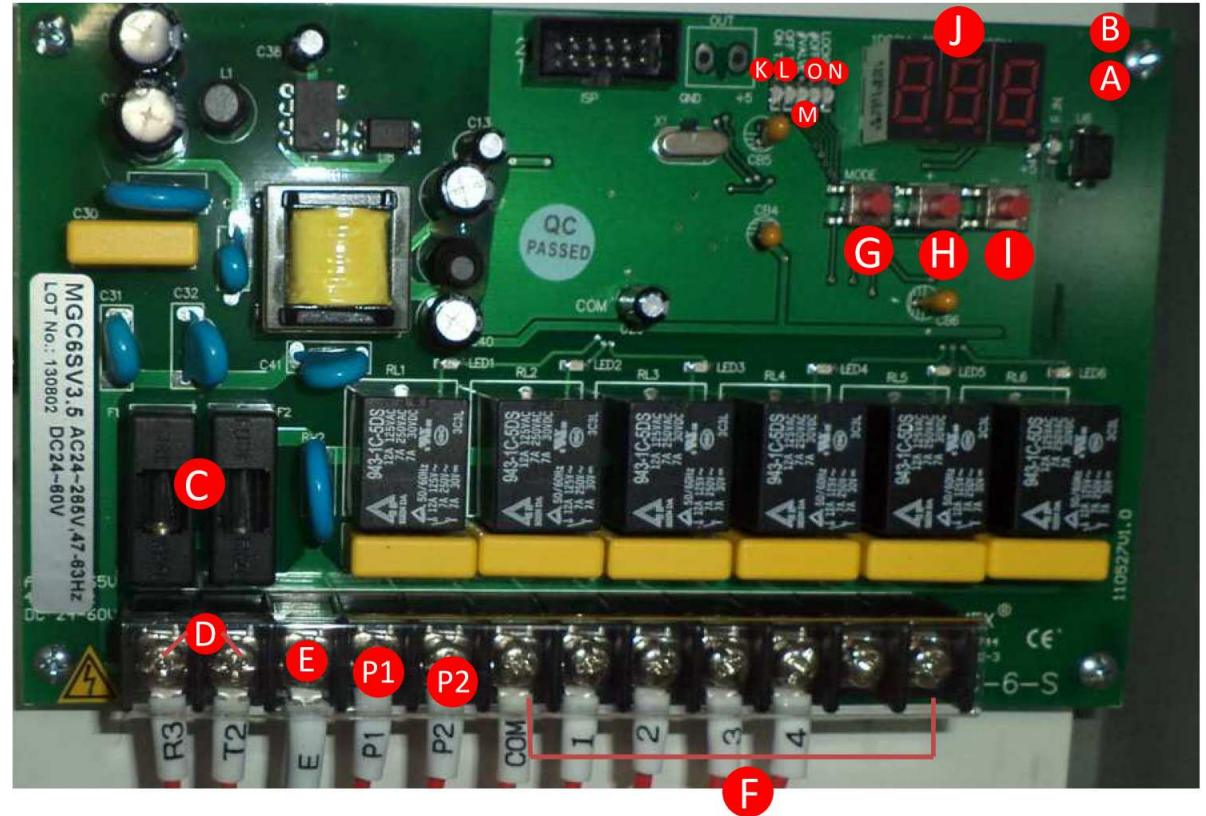
◆ Sequential Controller (Front).



◆ Sequential Controller (Back).



Main Electrical Components for SDC-20-16MDF Pulse Control Box



- ◆ **A : Power Indicator.**
- ◆ **B : Power Indicator.**
- ◆ **C : Fuse.**
- ◆ **D : Power Terminal.**
- ◆ **E : Grounding.**
- ◆ **F : Valves.**
- ◆ **G : Mode.**
- ◆ **H : Digits Adding Button.**
- ◆ **I : Digits Decreased Button.**
- ◆ **J : Digits shown.**
- ◆ **K : Air Pulse Jet Sprayed Length.**
- ◆ **L : Pulse Jet Intervals.**
- ◆ **M : Number of Valves.**
- ◆ **N : Settings completed.**
- ◆ **P1: Run Switch (Air pulse jet operating and setting, please refer to the instruction on the following pageP1./ P2.)**
- ◆ **P2: operating and setting, please refer to the instruction on the following pageP1./ P2.)**
- ◆ **O : Air Pulse Jet Cleanses Cartridges after Machine Stops Operation. (Preserved)**

Main Electrical Components for SDC-20-16MDF Pulse Control Box

Air Pulse Jet Timer Setting Procedure

- ◆ As you turn on the power, the "PWR" (Power Indicator) will light up.

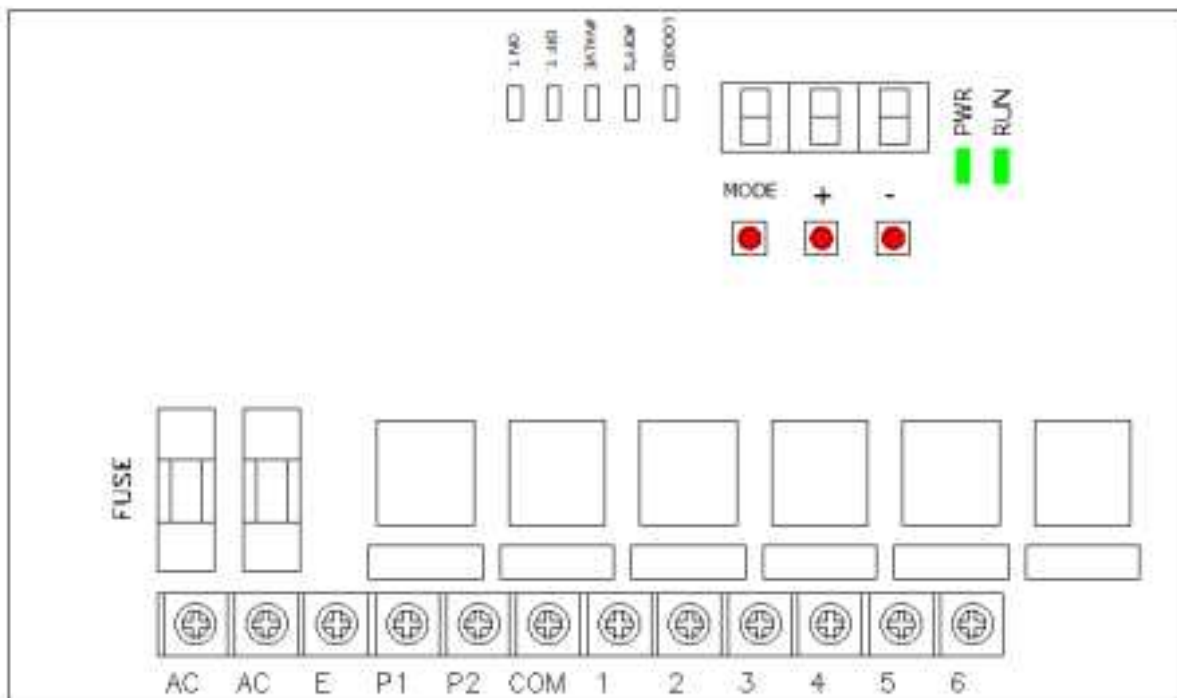


Figure 1

When the blower/fan starts up, the "RUN" (Switch Indicator) will light up. The Air pulse jet will begin to operate and clean the cartridge filters.

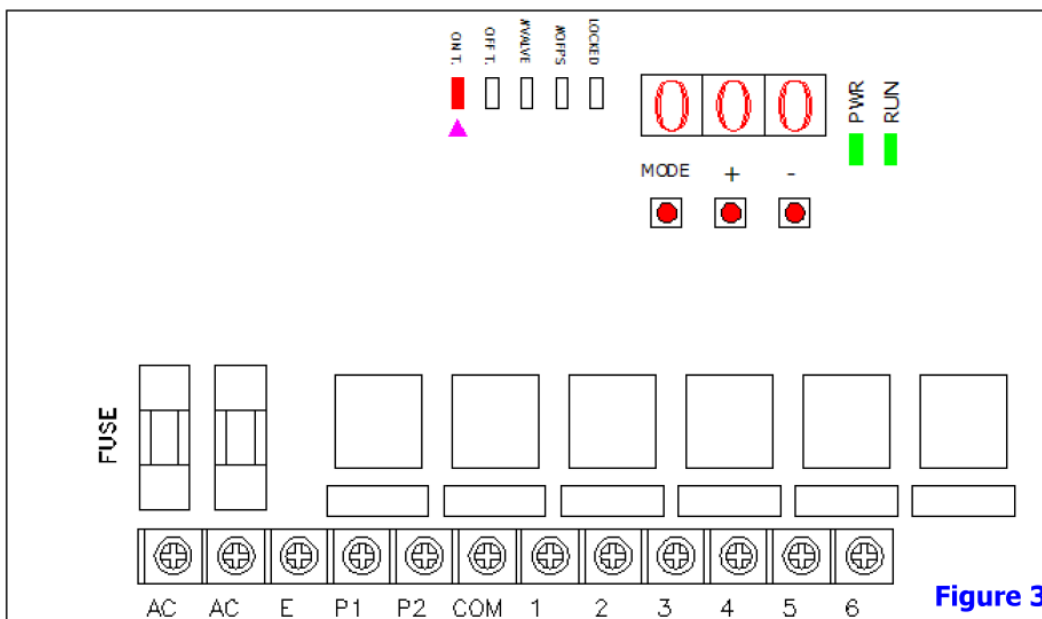
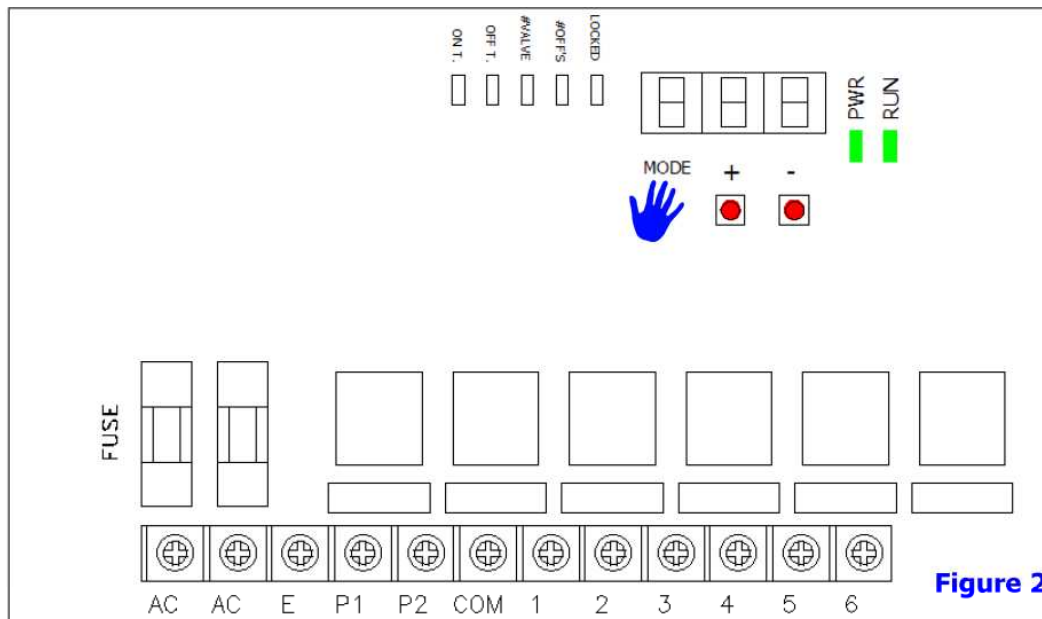
The Air pulse jet will clean the cartridge filters for one circulation after the blower/fan is shut down.

The setting above for the Air pulse jet is done by the following procedure:

Main Electrical Components for SDC-20-16MDF Pulse Control Box

Air Pulse Jet Timer Setting Procedure

- ◆ Set the time of air pulse jet for each valves :
 - Press MODE (figure 2) . The "ON T." will flash up that represents it is in the air pulsing time setting mode (pink triangle) (figure 3).



Main Electrical Components for SDC-20-16MDF Pulse Control Box

Air Pulse Jet Timer Setting Procedure

- Press "+" or "-" to adjust the time of the air pulsing for each valves (figure 4).
- The parameter of the air pulsing time was preset on 0.2 sec.
- The time scope for the air pulsing : 0.01 sec ~ 9.99 sec.

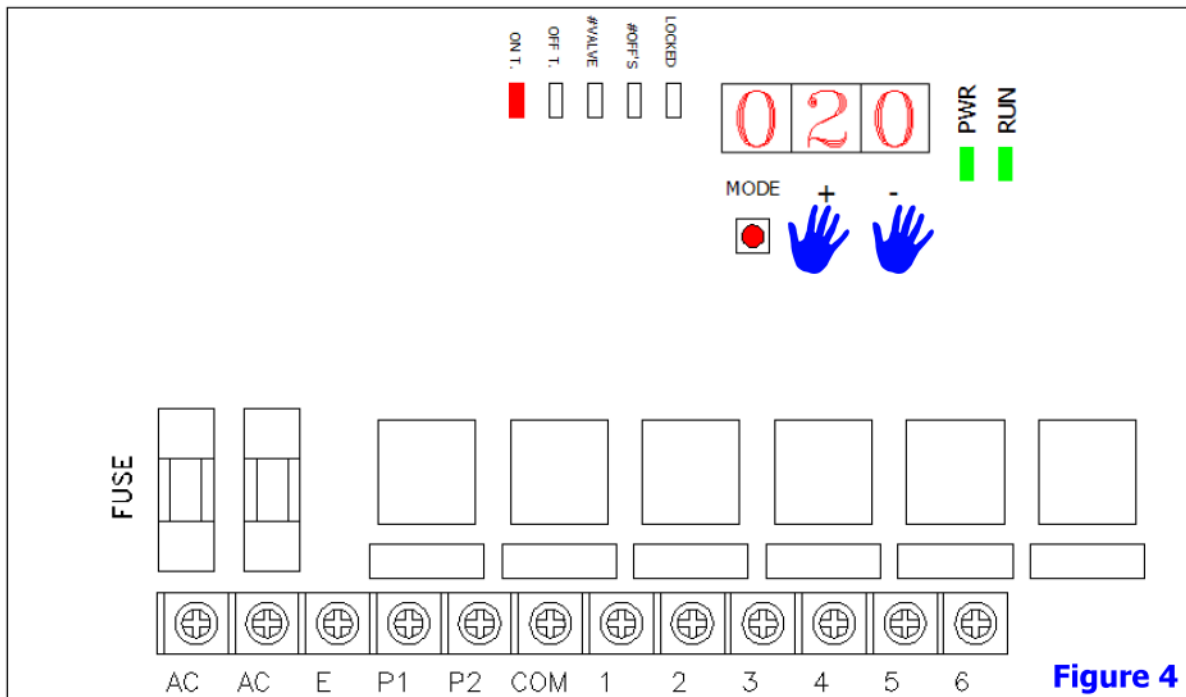
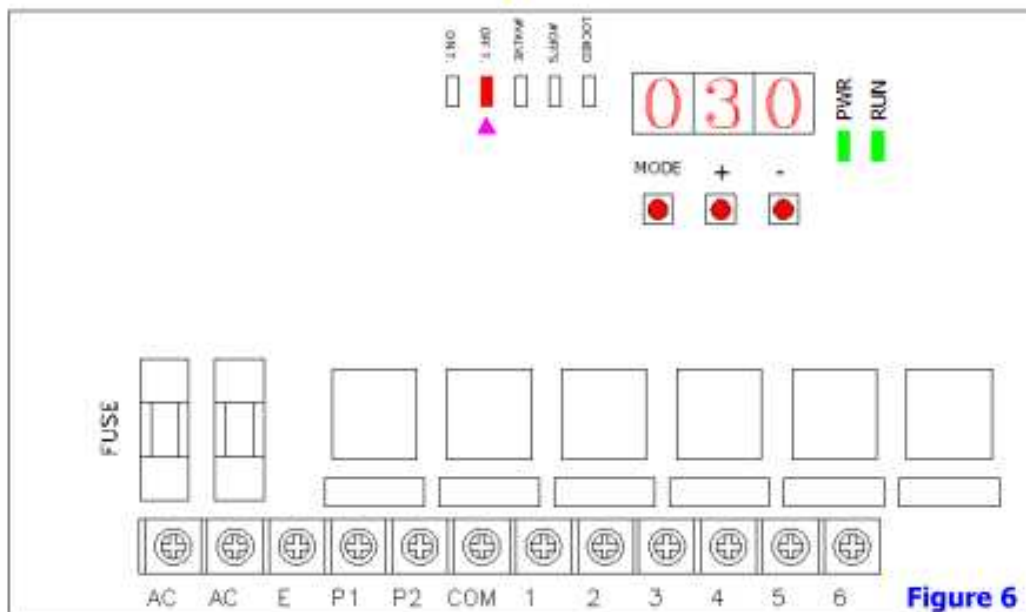
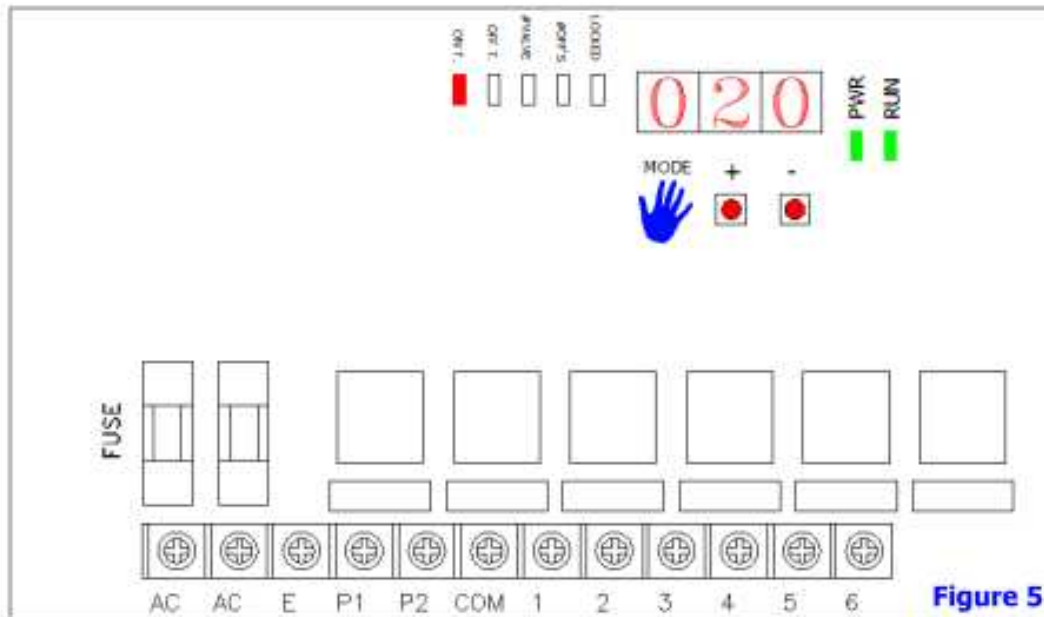


Figure 4

Main Electrical Components for SDC-20-16MDF Pulse Control Box

Air Pulse Jet Timer Setting Procedure

- ◆ Valves interval time setting :
 - Press MODE (figure 5) . The "OFF T." will flash up that represents it is in the valves interval time setting mode (pink triangle) (figure 6).



Main Electrical Components for SDC-20-16MDF Pulse Control Box

Air Pulse Jet Timer Setting Procedure

- Press "+" or "-" to adjust the valves interval time (figure 7).
- The parameter of the valve interval time was preset on 30 sec.
- The scope of the valve interval time : 1 sec. ~999 sec.

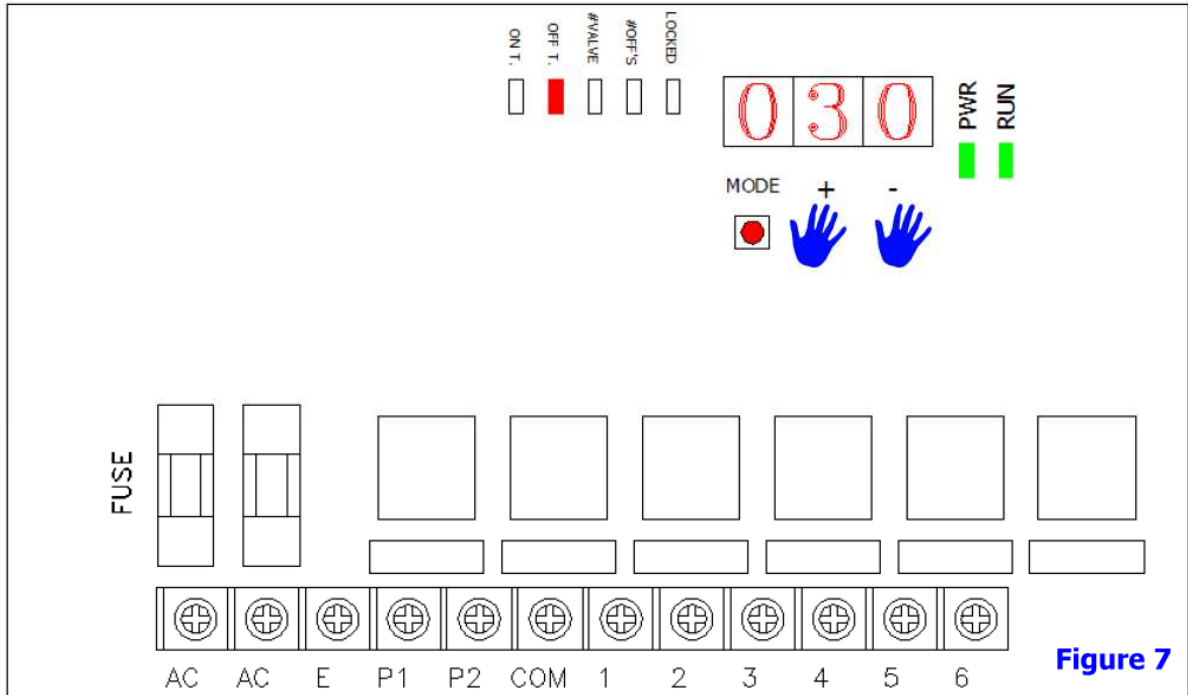


Figure 7

Main Electrical Components for SDC-20-16MDF Pulse Control Box

Air Pulse Jet Timer Setting Procedure

- ◆ The valve quantities setting :
 - Press MODE (figure 8) . The "#VALVE" will flash up that represents it is in the valve quantities setting mode (pink triangle) (figure 9).

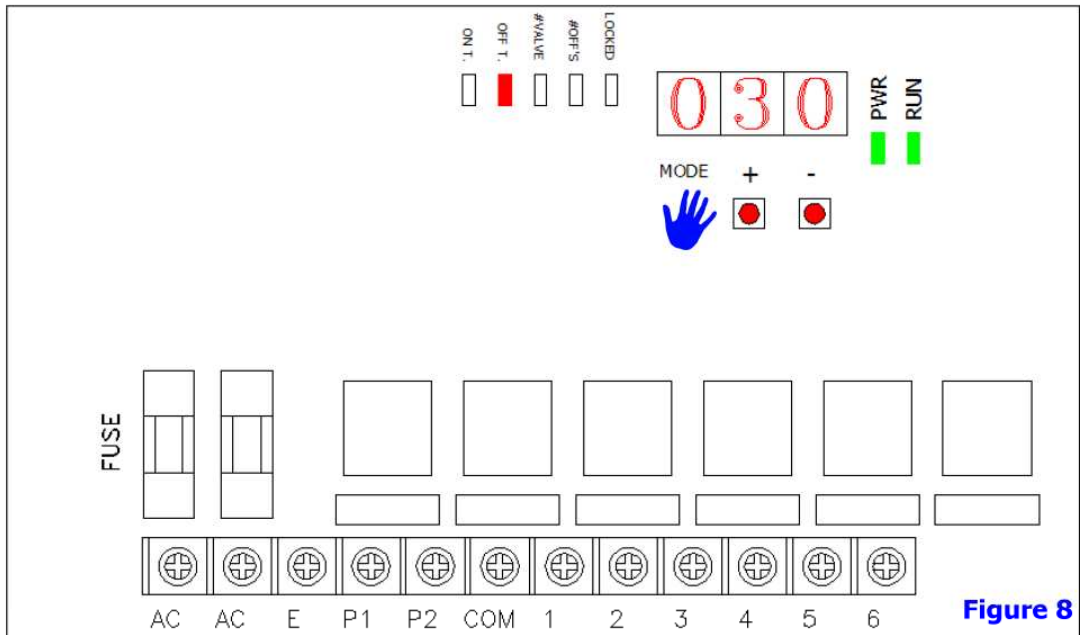


Figure 8

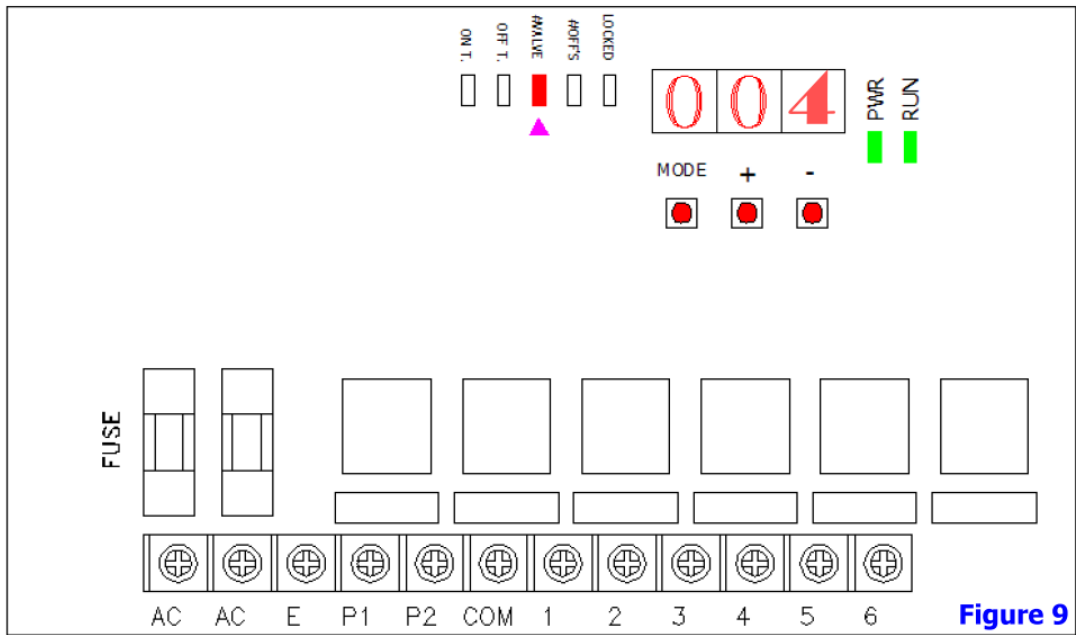


Figure 9

Main Electrical Components for SDC-20-16MDF Pulse Control Box

Air Pulse Jet Timer Setting Procedure

- Press "+" or "-" to adjust the valve quantities (figure 10).
- The parameter of the valve quantities was preset on 3.
- The scope of the valve quantities : 1~6.

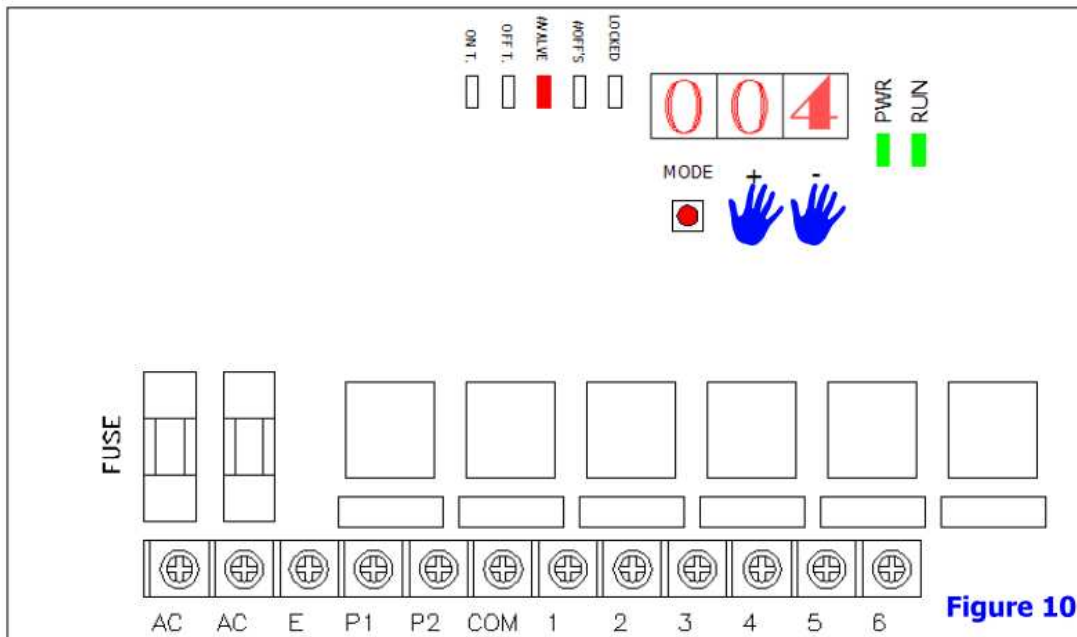


Figure 10

Main Electrical Components for SDC-20-16MDF Pulse Control Box

Air Pulse Jet Timer Setting Procedure

- ◆ Set the circulation of the air pulse jet that cleans cartridge filters after stopping operation :
 - Press MODE (figure 11) . The "#OFF'S" will flash up that represents it is in the circulation of the air pulsing setting mode (pink triangle) (figure 12).

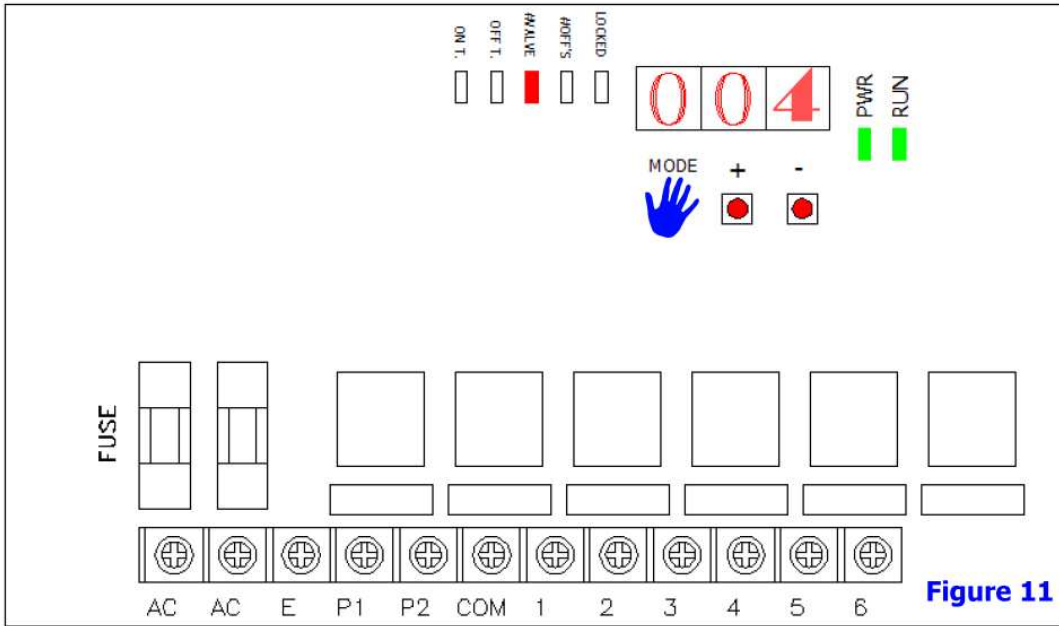


Figure 11

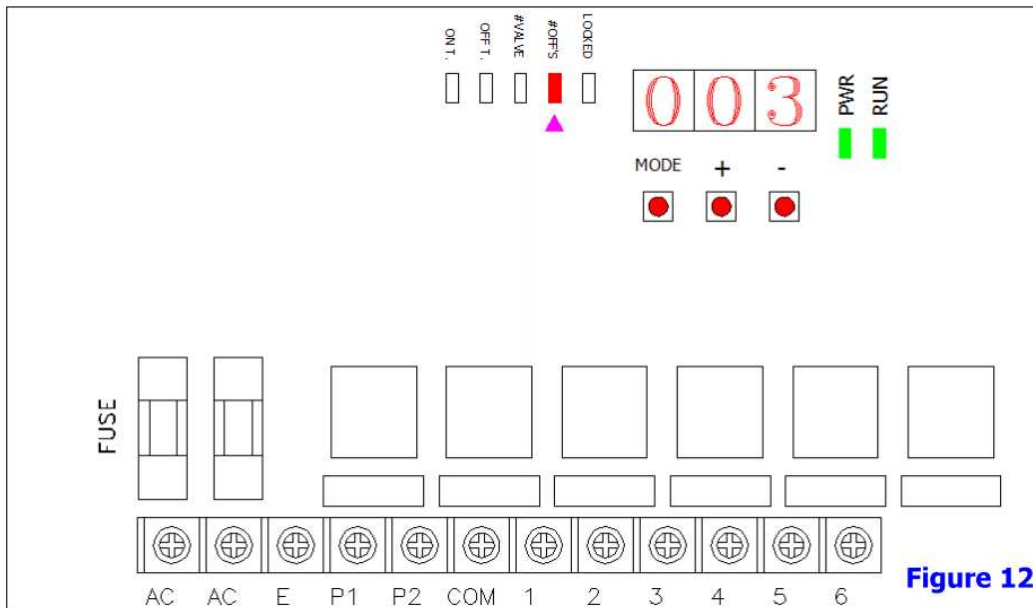
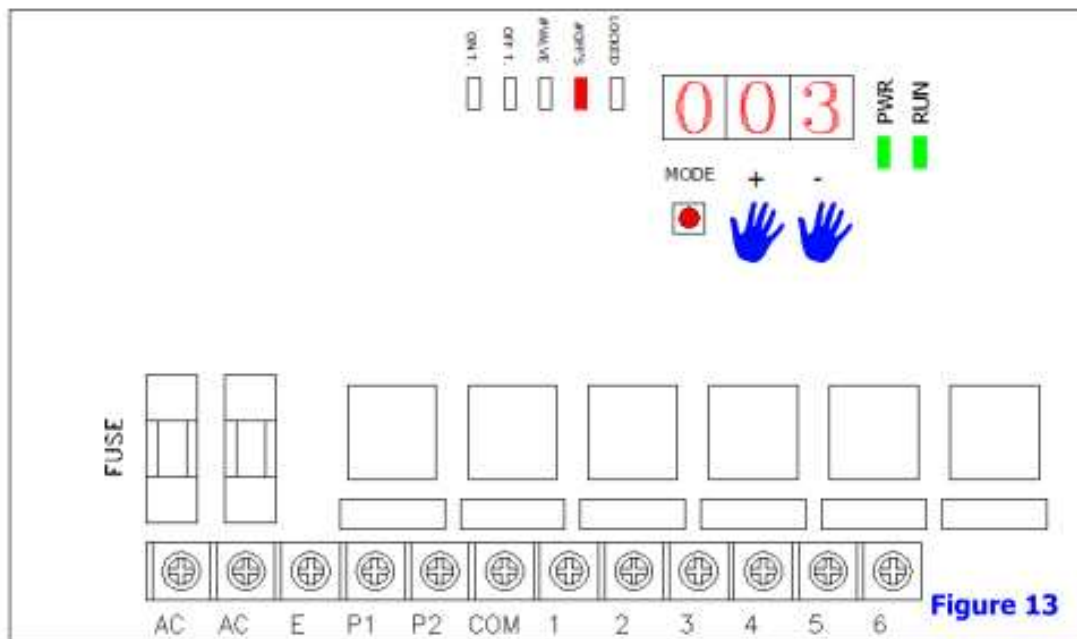


Figure 12

Main Electrical Components for SDC-20-16MDF Pulse Control Box

Air Pulse Jet Timer Setting Procedure

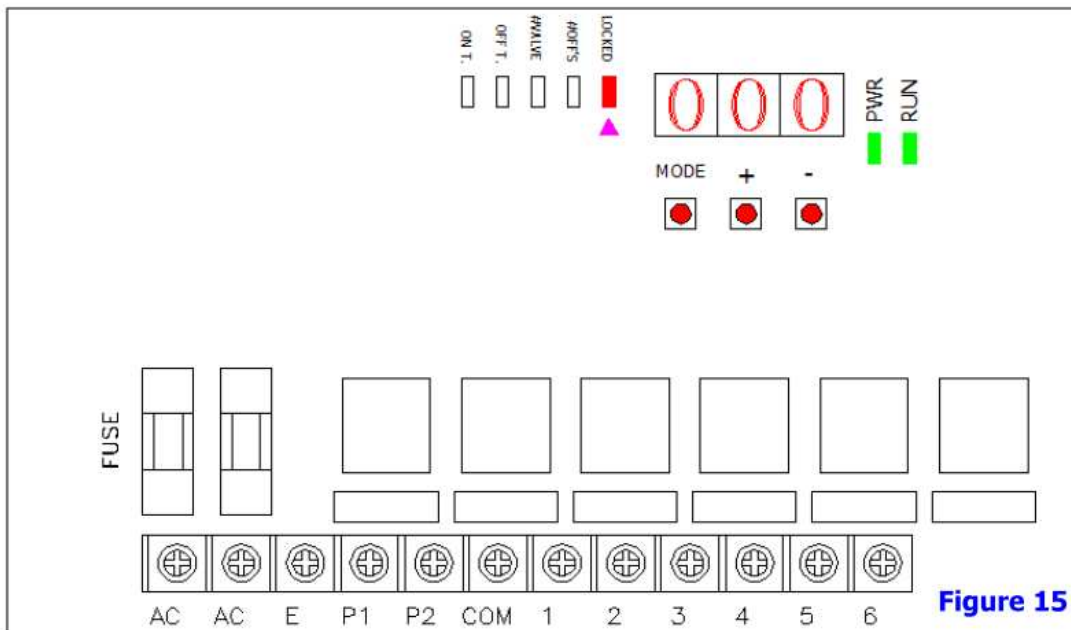
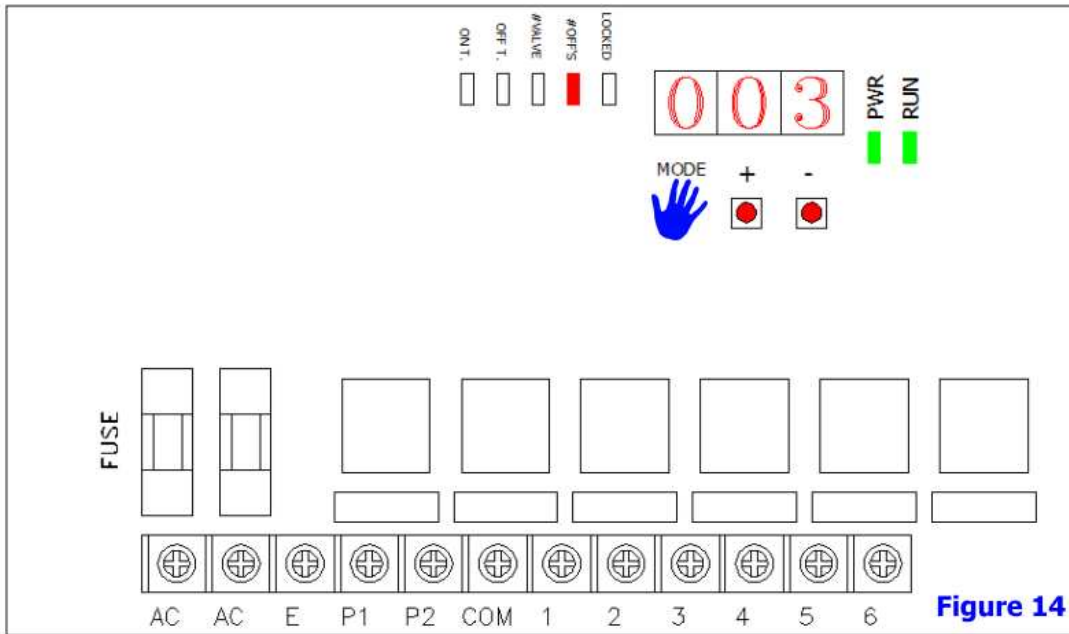
- Press "+" or "-" to adjust the circulation of the air pulsing that cleans cartridge filters after stopping operation (figure 13).
- The parameter for the circulation of the air pulsing was preset on 3.
- The scope for the circulation of the air pulsing : 0~25.



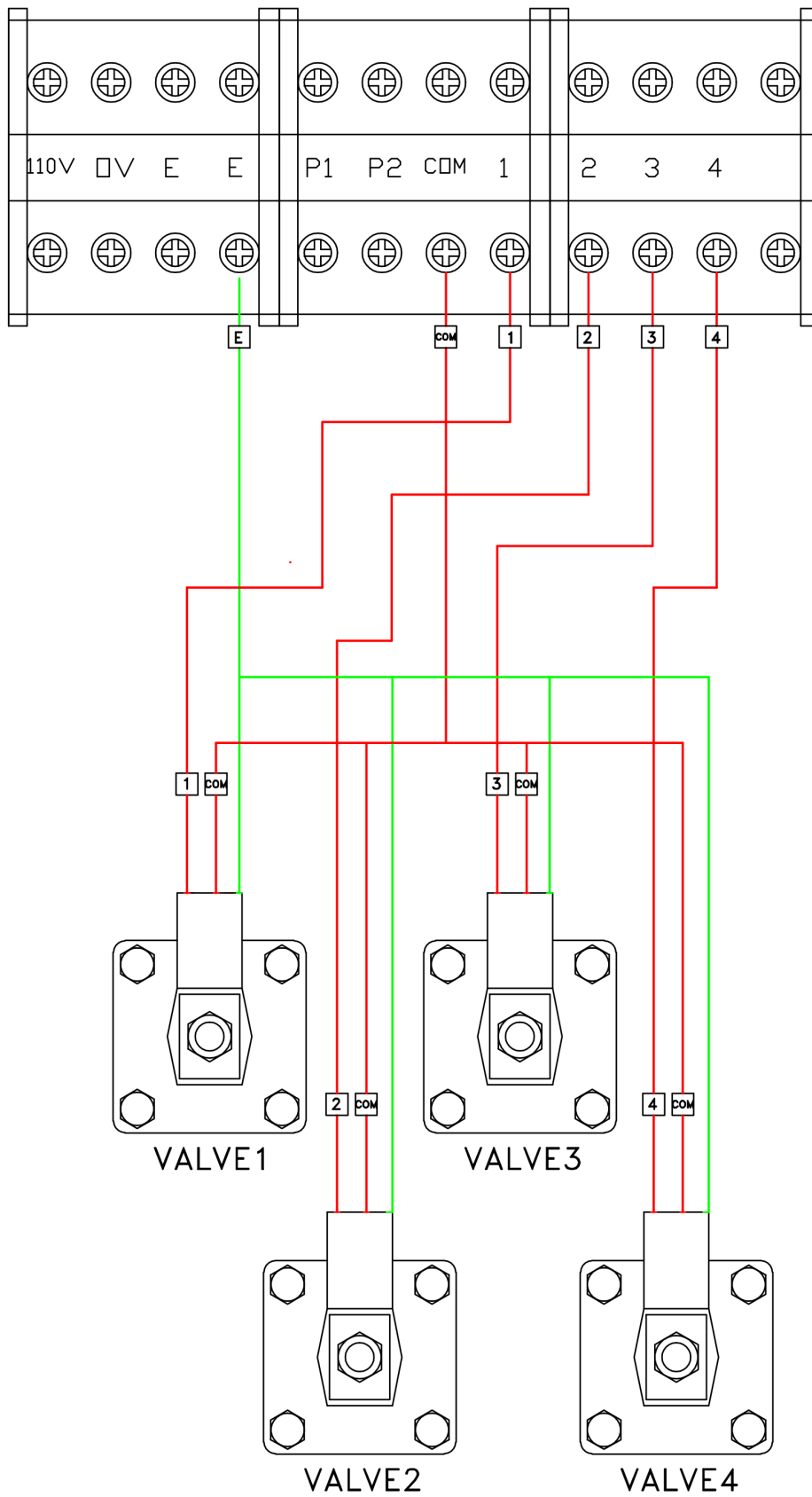
Main Electrical Components for SDC-20-16MDF Pulse Control Box

Air Pulse Jet Timer Setting Procedure

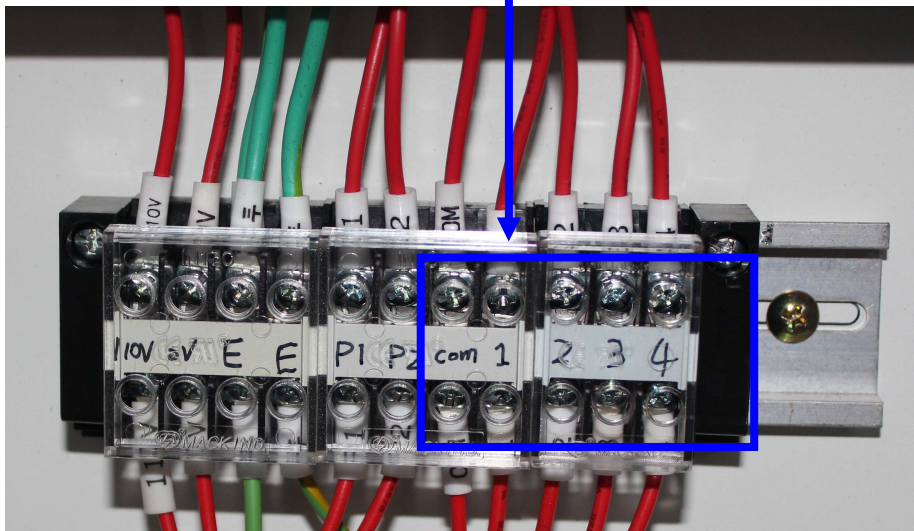
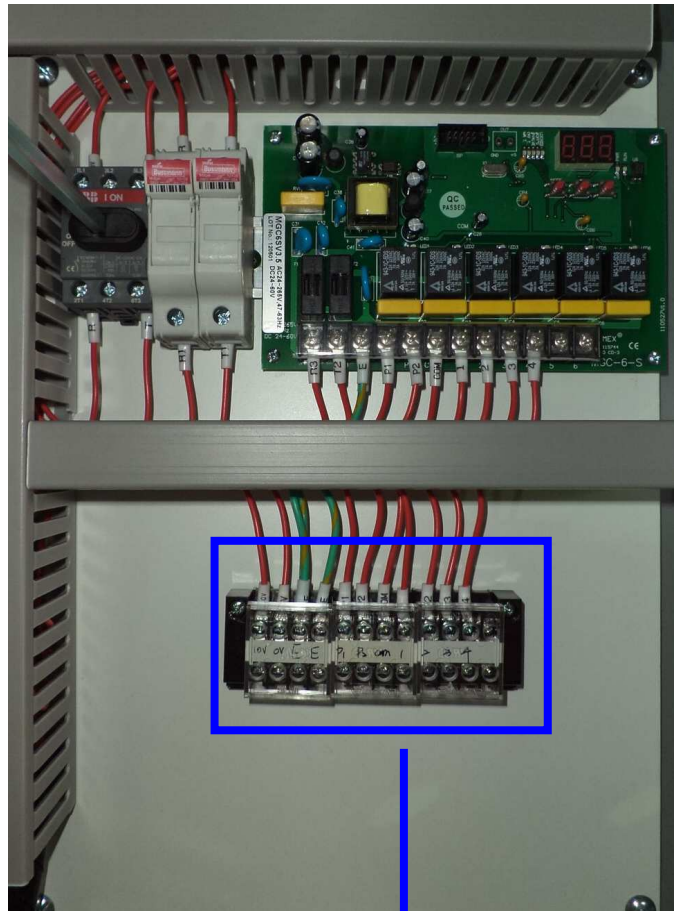
- ◆ Setting completed :
 - Press MODE (figure 14) . The "LOCKED" will flash up that represents all parameters setting completed (figure 15).



Main Electrical Components for SDC-20-16MDF Pulse Control Box



Main Electrical Components for SDC-20-16MDF Pulse Control Box



Main Electrical Components for SDC-20-16MDF Pulse Control Box

◆ Valve

