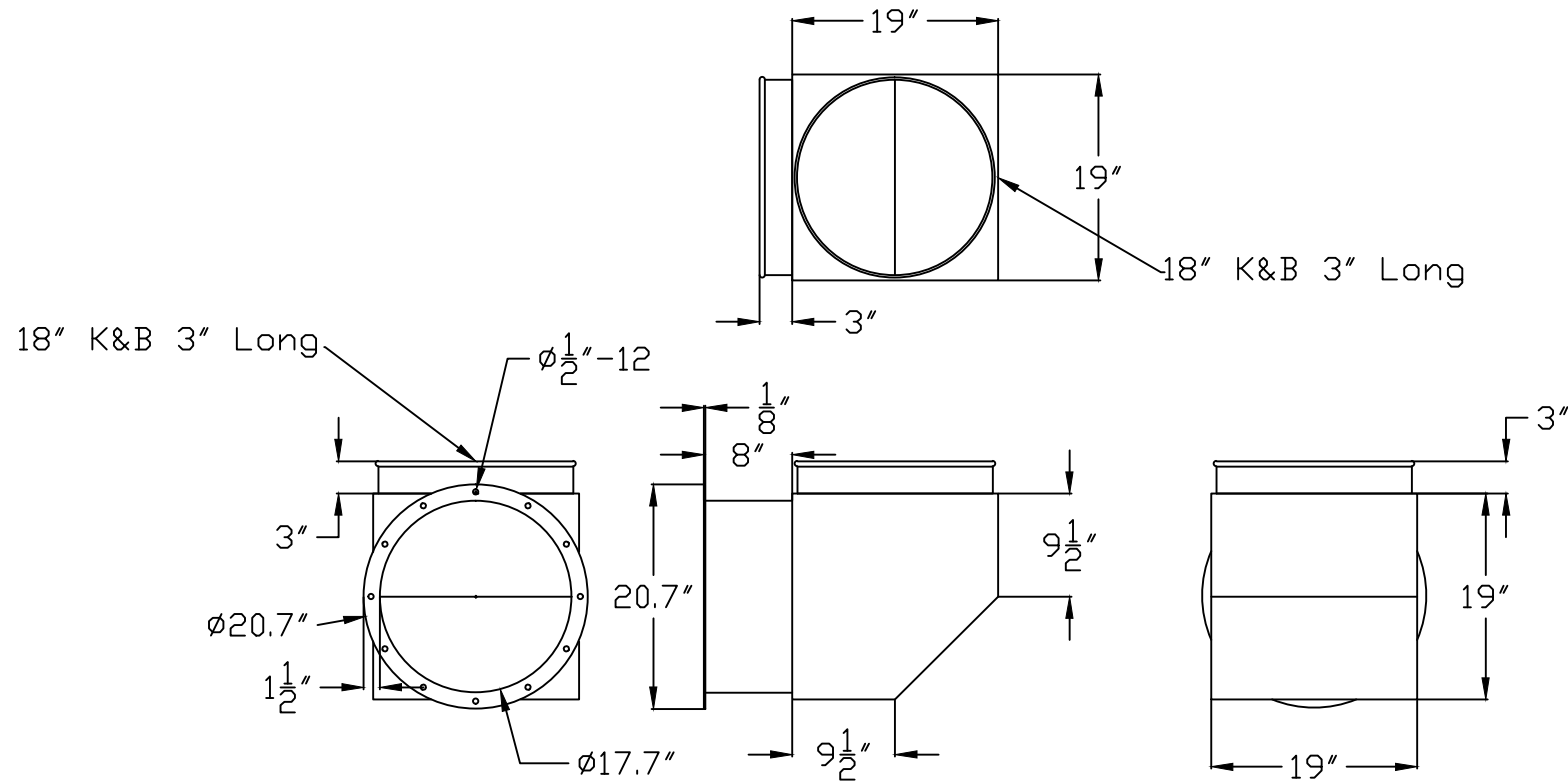


SDC-20-16MDF Inlet Box

JCI- Matamoros



Note:

- 1) Use 16 gauge material
- 2) Weld all seams

Avani Environmental Intl. 95 Cypress Drive Youngsville, NC 27596 P# 919-570-2862 F# 919-570-2863		Avani
Project: JR Automation / JCI		
Drawing: SDC-20-10MDF Inlet Box		
Date: 8/6/15		Drawn by: WWB
Sheet No: 1 of 1		Rev.: 1