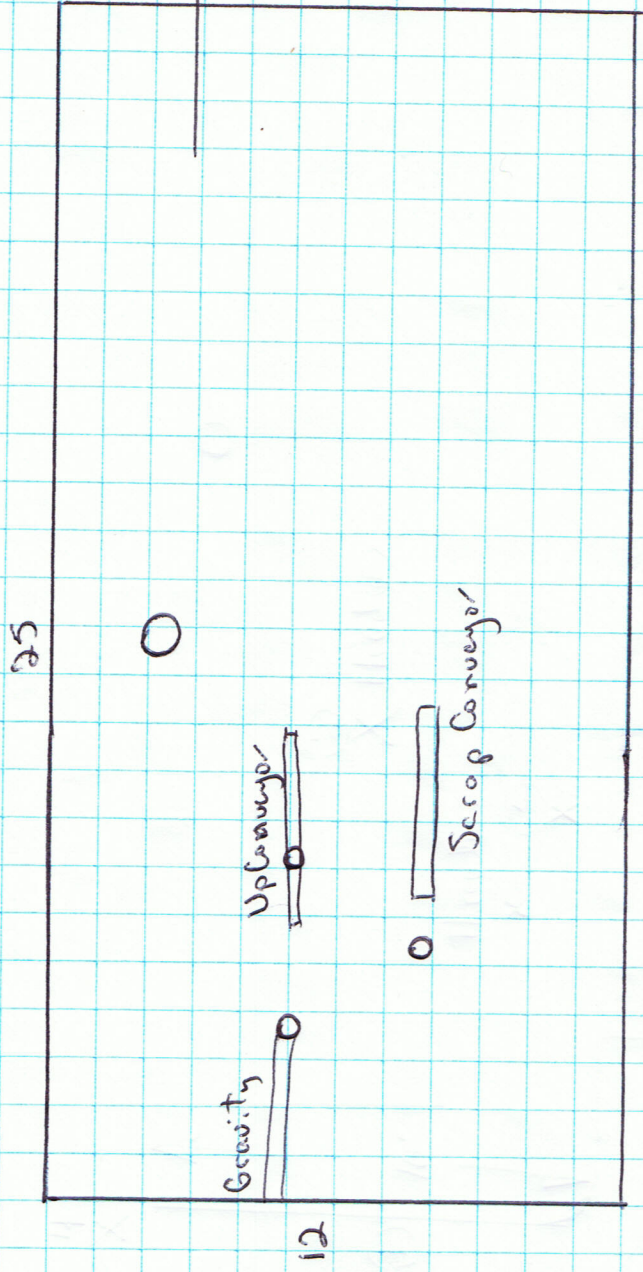


MS/m³
Enclosure 70

ms/m³
Head 90
Conveyor Up 150
Scrap 150
Parts 101
Parts Bin 44



PV

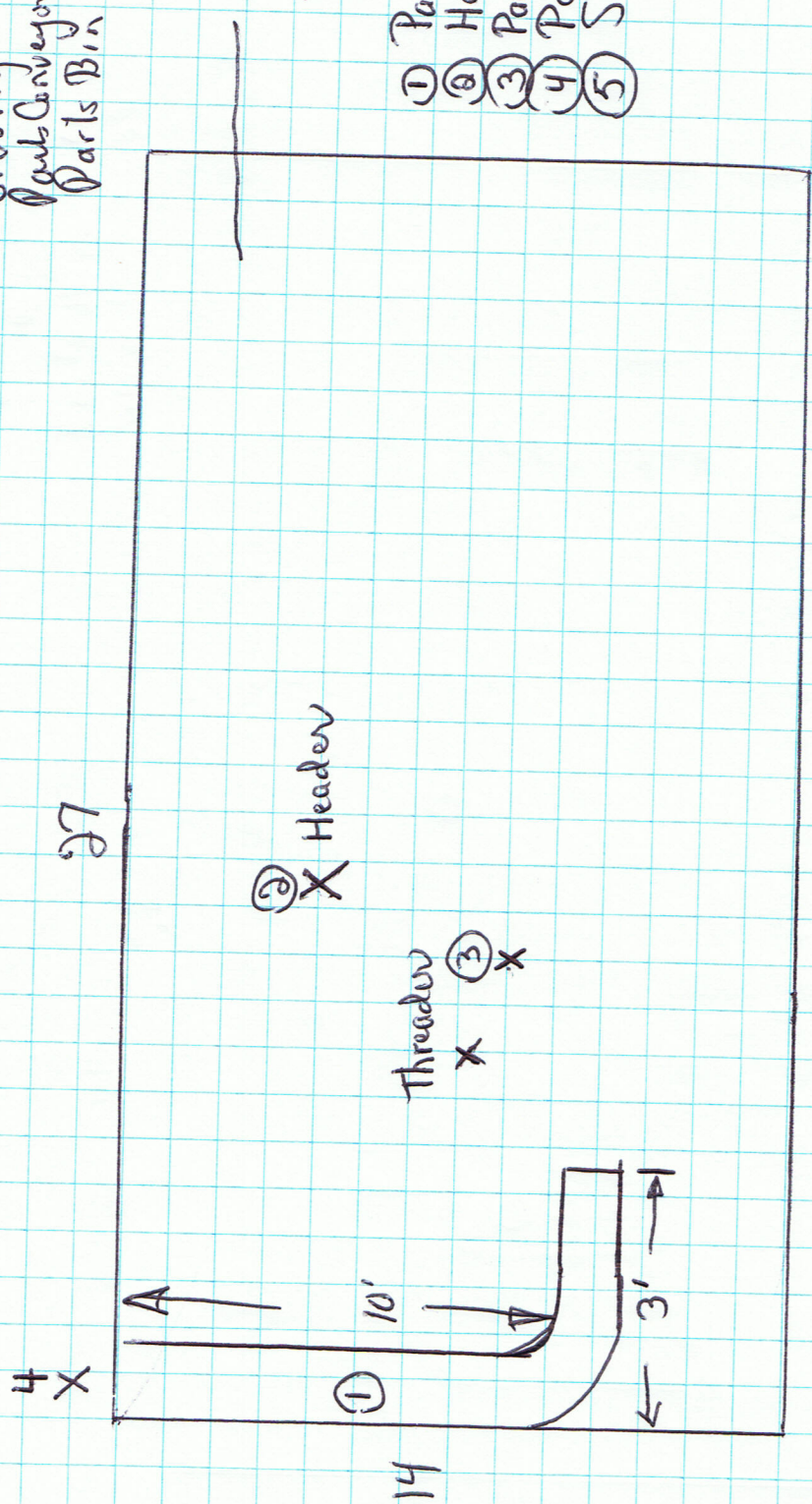
Header
Scrap Conveyor
Gravity Conveyor
Parts Up Conveyor
Parts Bin

BV 4-01

BV 4-2

mg/m³
 Head 150
 Up Conveyor 40
 Thruheader 70
 Gravity 30
 Part Conveyor 60
 Parts Bin 30

120 mg/m³ Enclosure

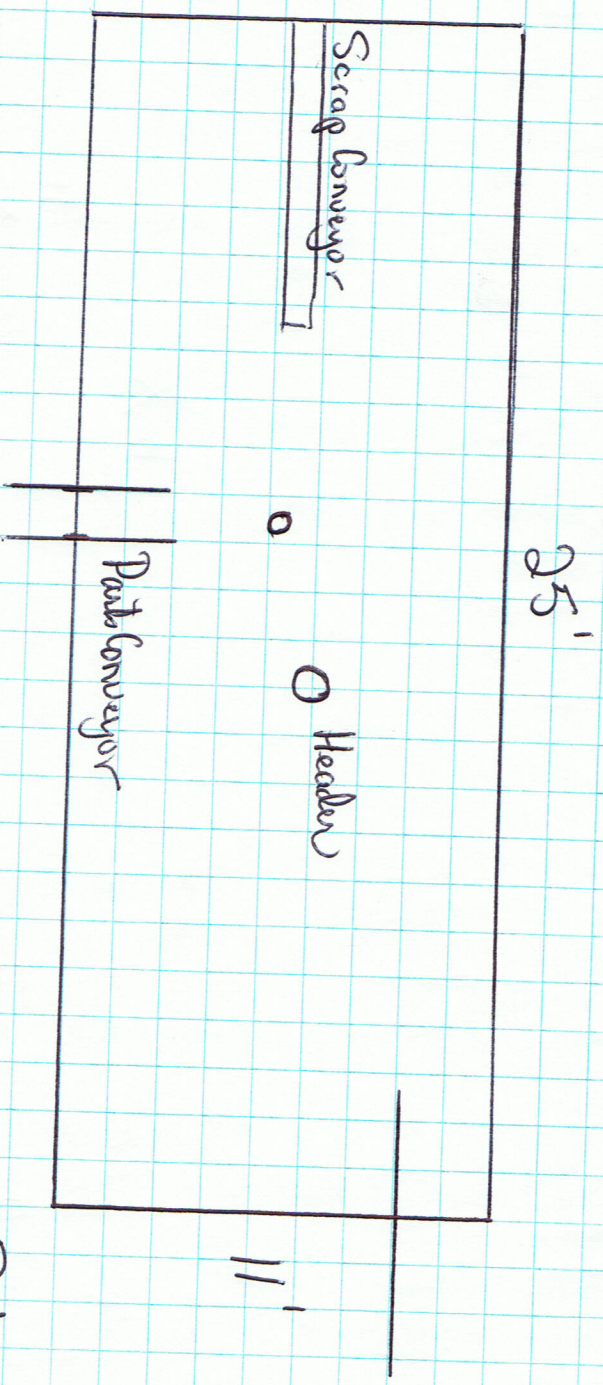


- ① Part Exit Cover
 ② Header
 ③ Part Conveyor & Thruheader
 ④ Parts Bin
 ⑤ Scrap Bin

mg/m³

Common Scrap Conveyor 2.0
 Bin 1.55

K133494
 NB 415-01, 03, 04



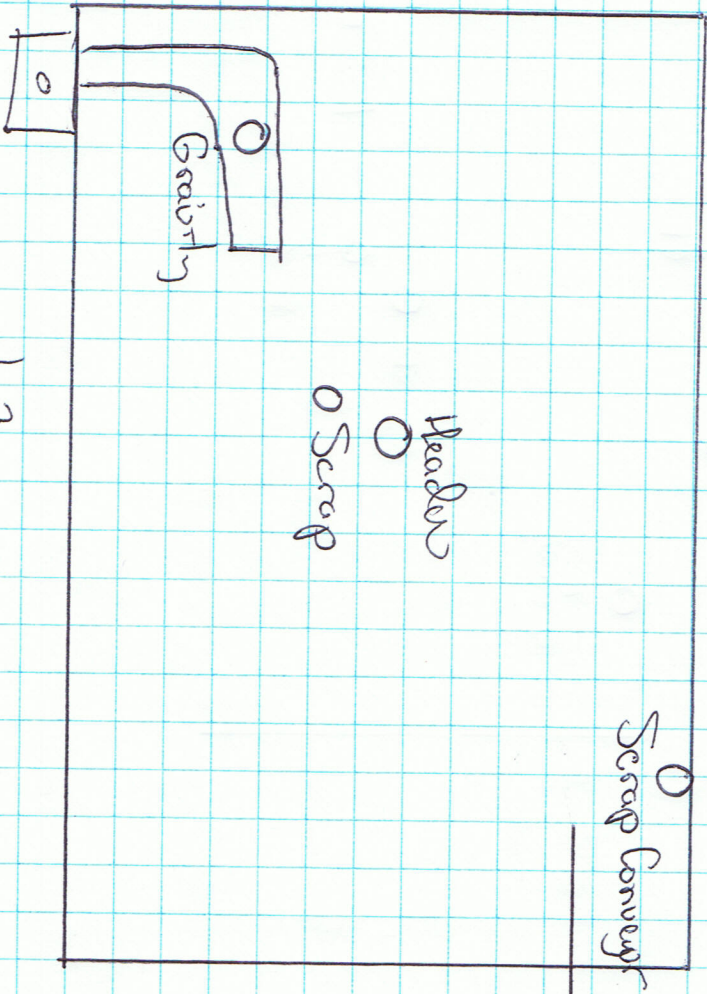
PU
 Header
 Header
 Parts Conveyor
 Scrap Conveyor
 Parts Bin
 Scrap Bin

$\frac{3}{8}$ LS3-01
 $\frac{1}{2}$ LS3-01

$65 \text{ m}^3/\text{m}^3$ Enclosure

$150 \text{ m}^3/\text{m}^3$
Head 150
Gravity Scrap 76
Parts Bin 23
Parts Bin 150

13



Main Scrap Conveyor
Bin
 $.596 \text{ m}^3/\text{m}^3$
 $.59$

Pick Ups

Headline
Scrap Conveyor
or Gravity Conveyor
Parts Bin

8L4-01, 02, 03 (3)