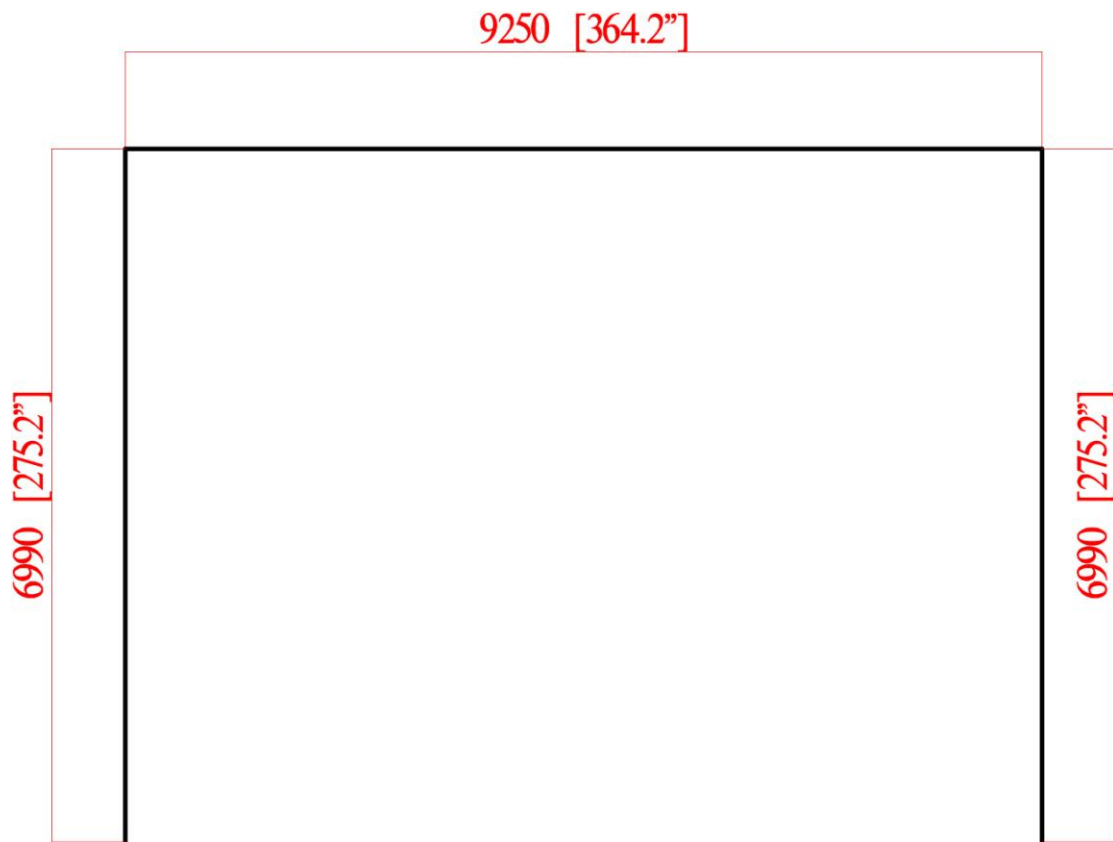
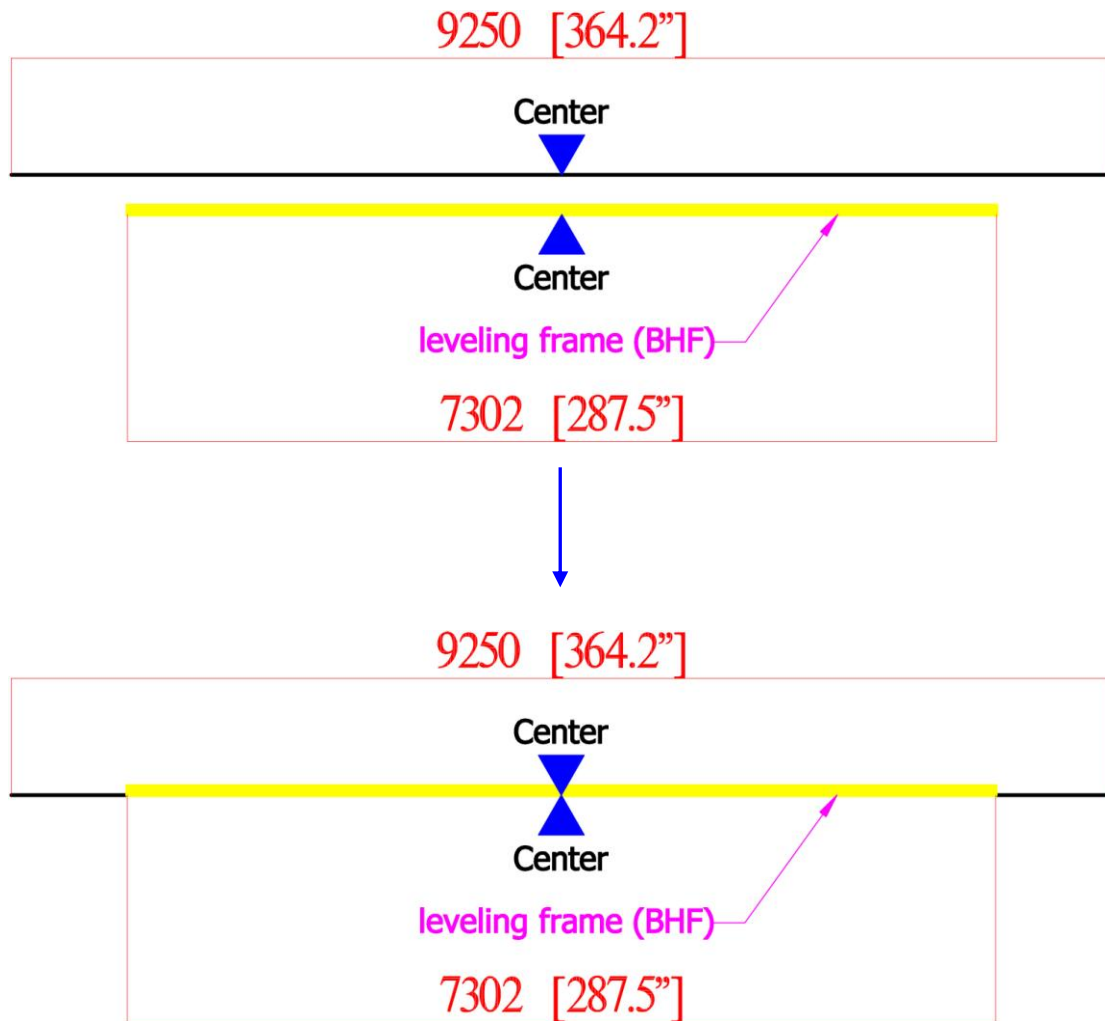


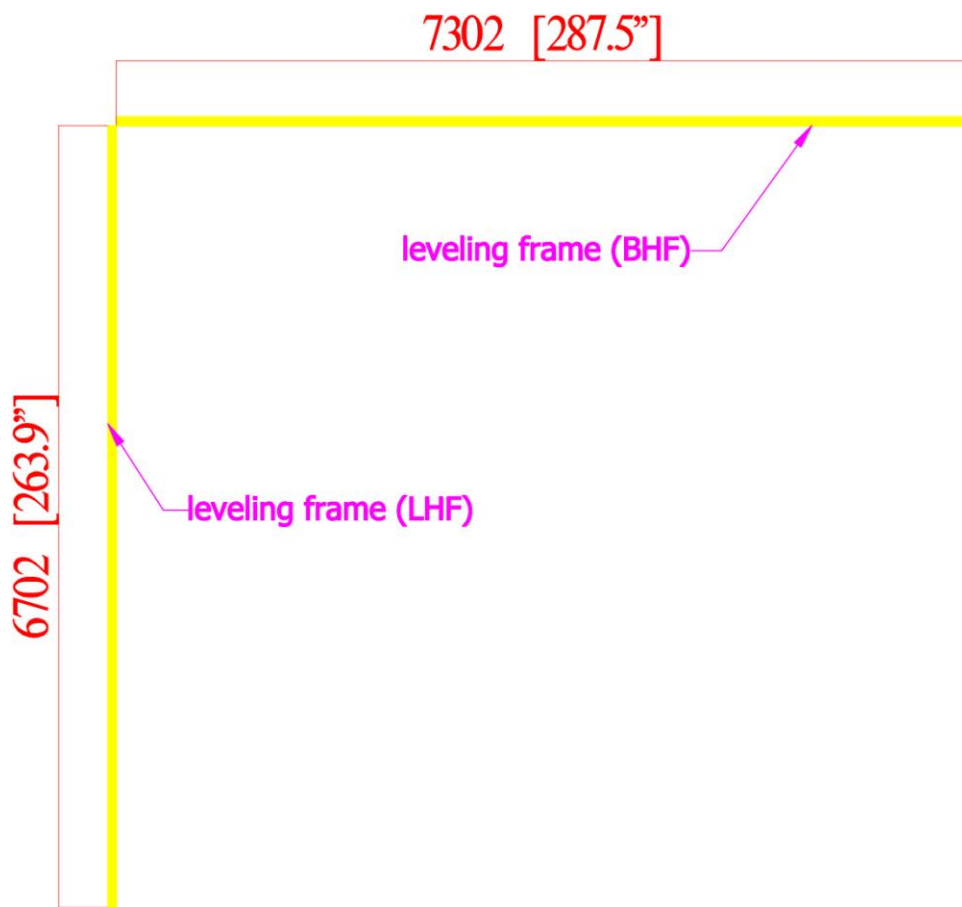
- Vacate space and mark up for built-up installation: booth back: 9250mm (364.2") and booth both sides: 6990mm (275.2").



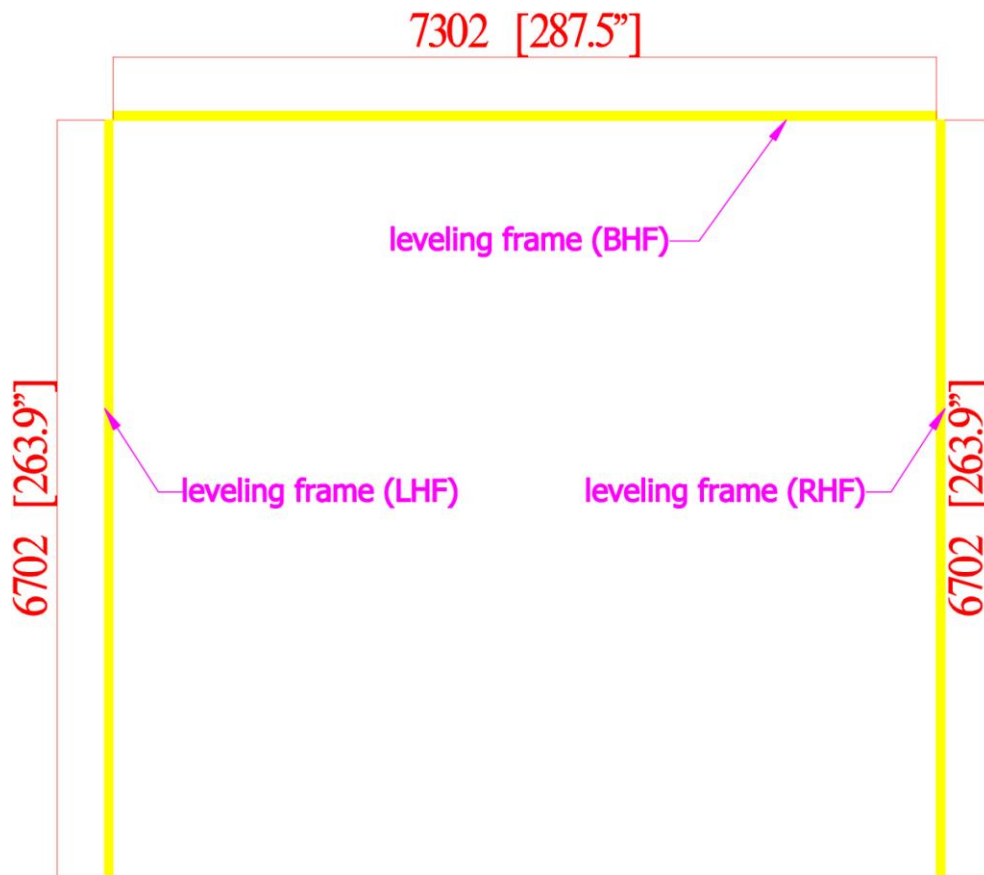
- Take out the number: **BHF**, the length is 7302mm (287.5").
- Center **BHF** at the booth back length 9250mm (364.2") as shown below.



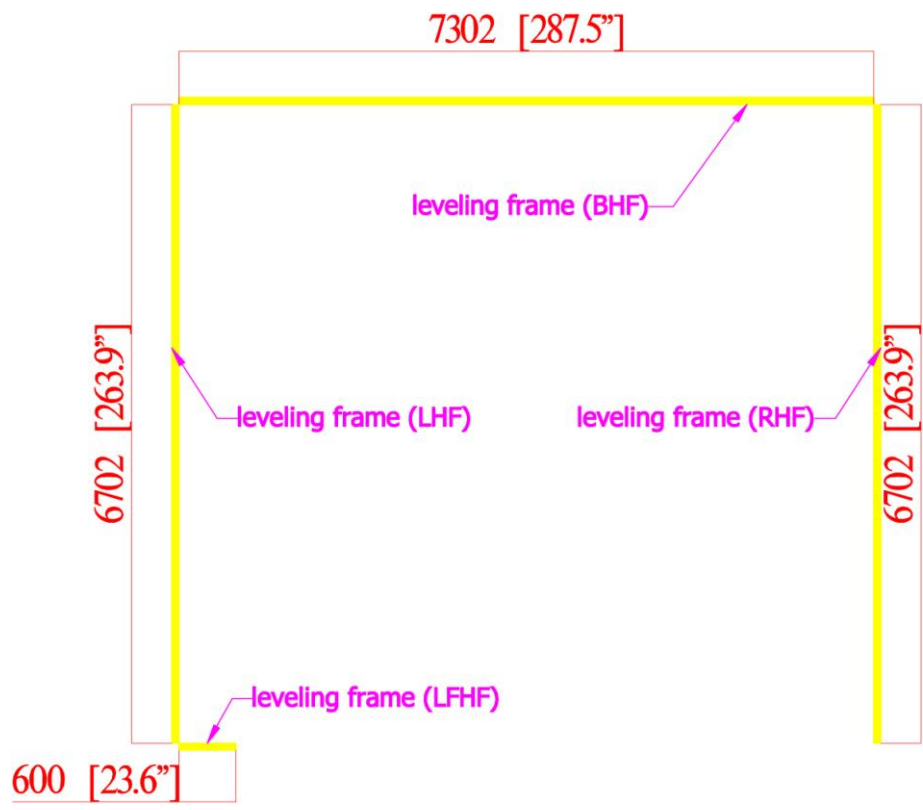
- Take out the number: **LHF**, the length is 6702mm (263.9”).
- Lay **LHF** on the left side of **BHF** when facing the booth.



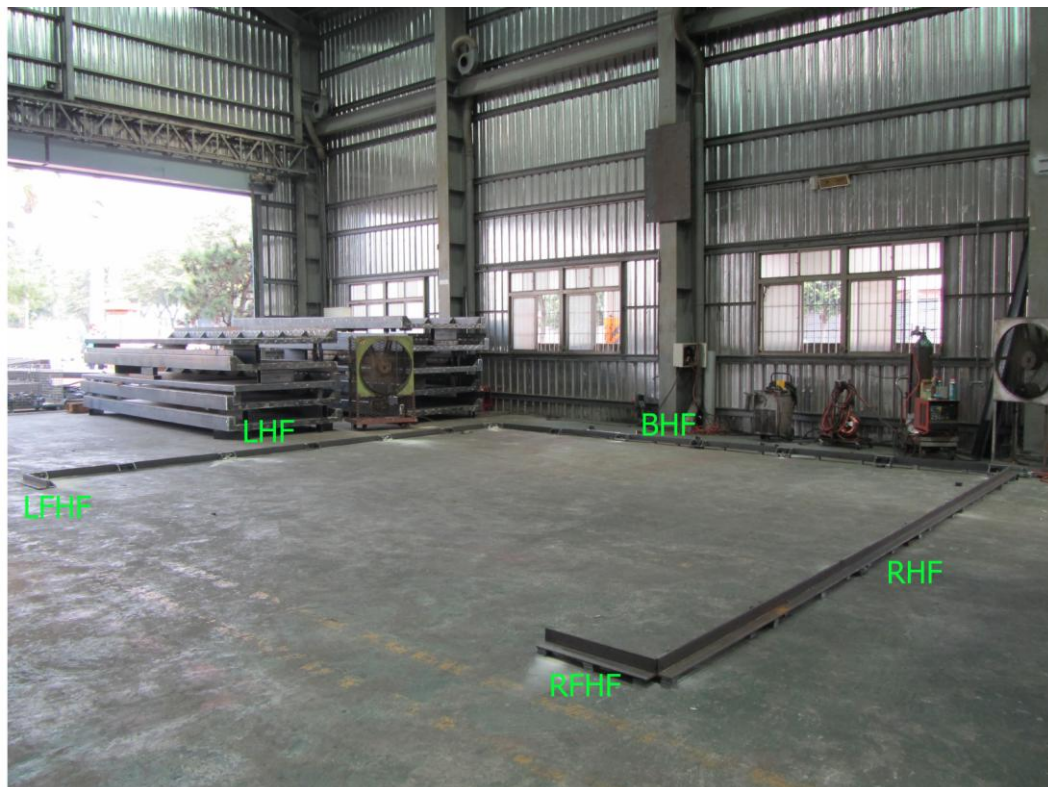
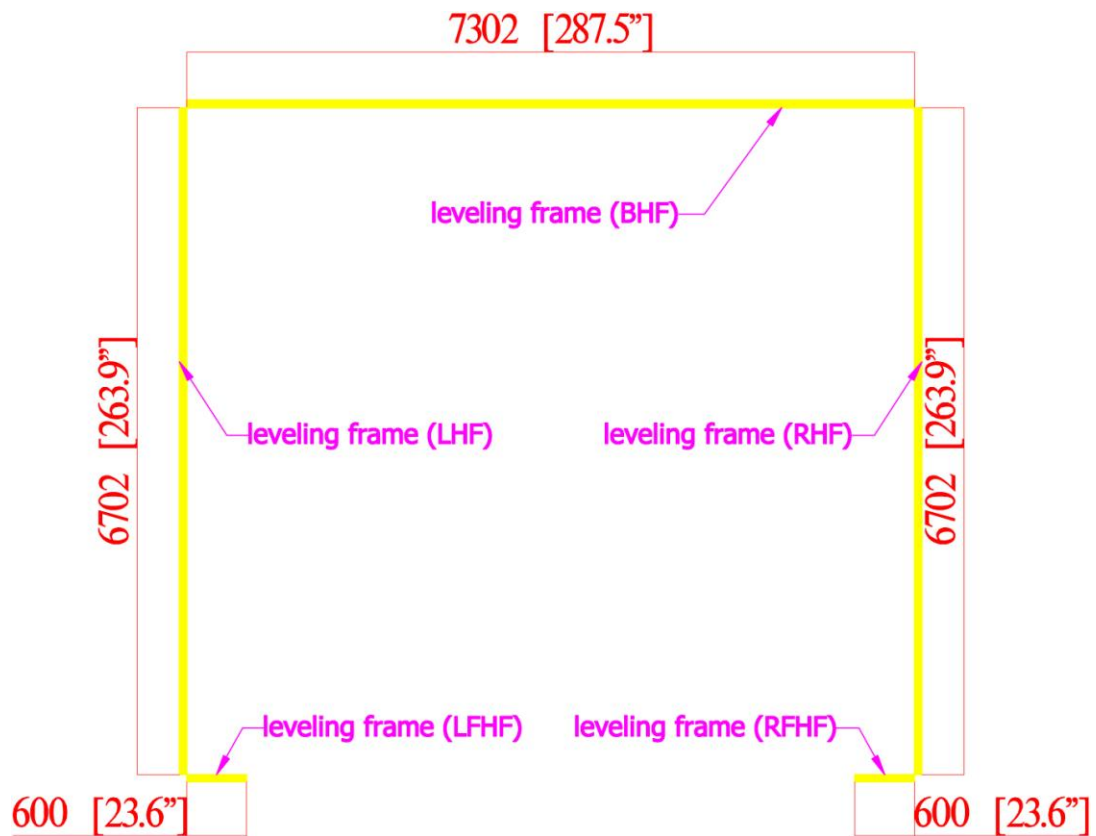
- Take out the number: **RHF**, the length is 6702mm (263.9”).
- Put **RHF** on the right side of **BHF** when facing the booth.



- Take out the number: **LFHF**, the length is 600mm (23.6”).
- Connect **LFHF** at the front end of **LHF** when facing the booth.

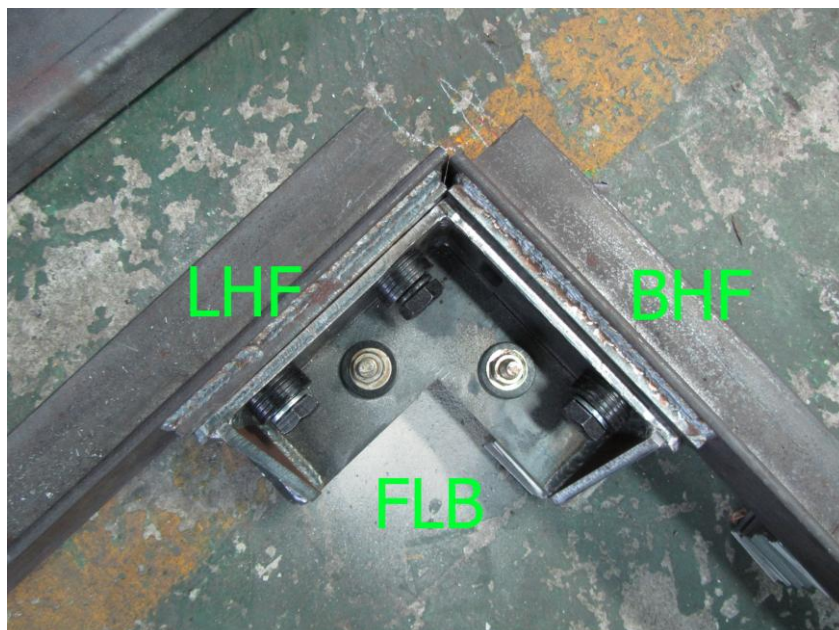
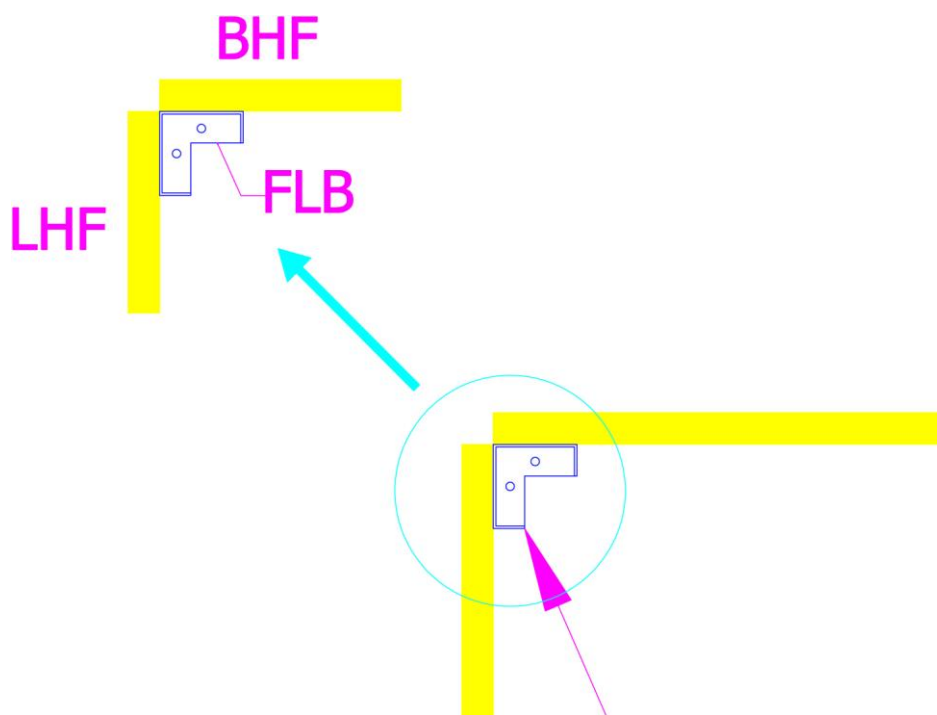


- Take out the number: **RFHF**, the length is 600mm (23.6").
- Connect **RFHF** at the front end of **RHF** when facing the booth.



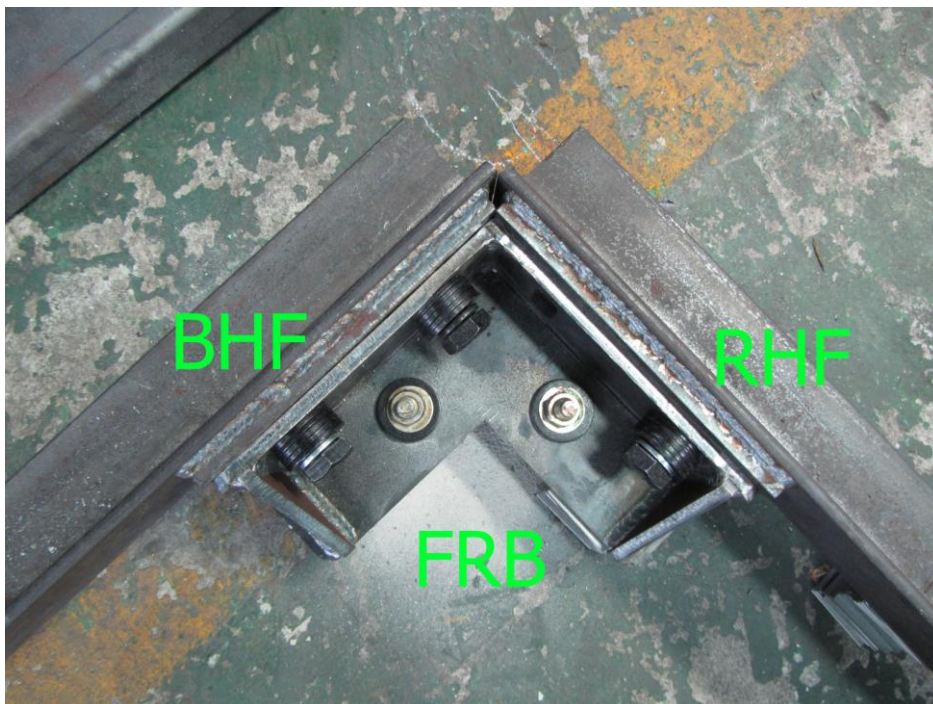
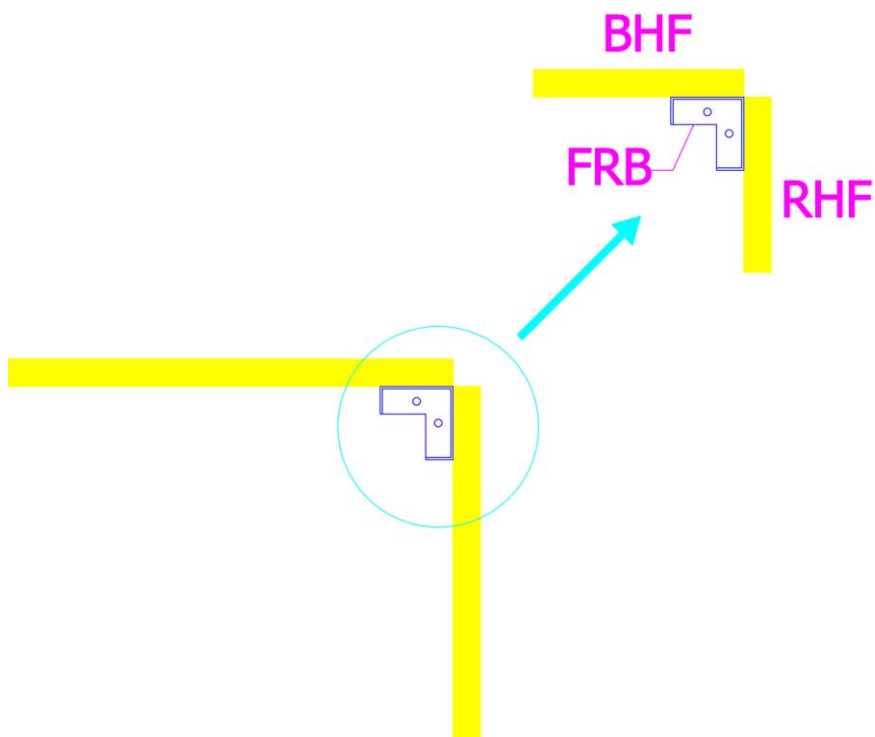
- Take out the number: **FLB**.
- Set **FLB** at the adjoining corner of **BHF** and **LHF** with:

Description		Q'ty
Hex Screw	5/8"*1-1/2"	4
Hex Nut	5/8"	4
Lock Washer	5/8"	4
Flat Washer	5/8"*OD38*3T	8



- Take out the number: **FRB**.
- Set **FRB** at the adjoining corner of **BHF** and **RHF** with:

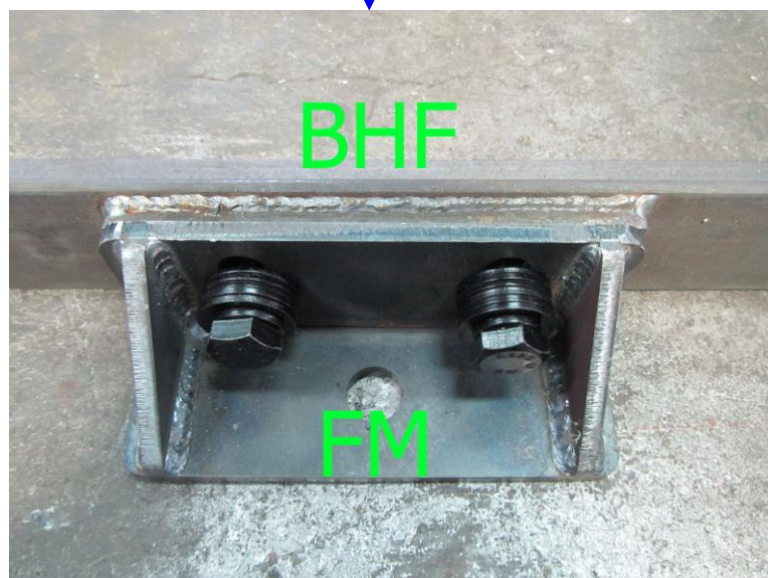
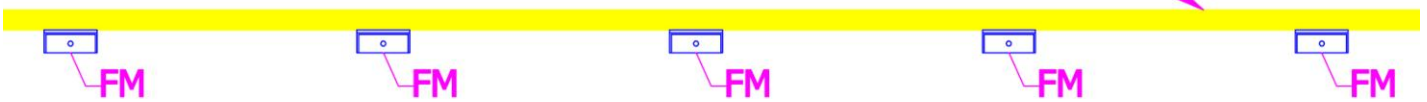
Description		Q'ty
Hex Screw	5/8"*1-1/2"	4
Hex Nut	5/8"	4
Lock Washer	5/8"	4
Flat Washer	5/8"*OD38*3T	8



- Take out the number: **FM**.
- Secure **FM** adjacent to **BHF** with:

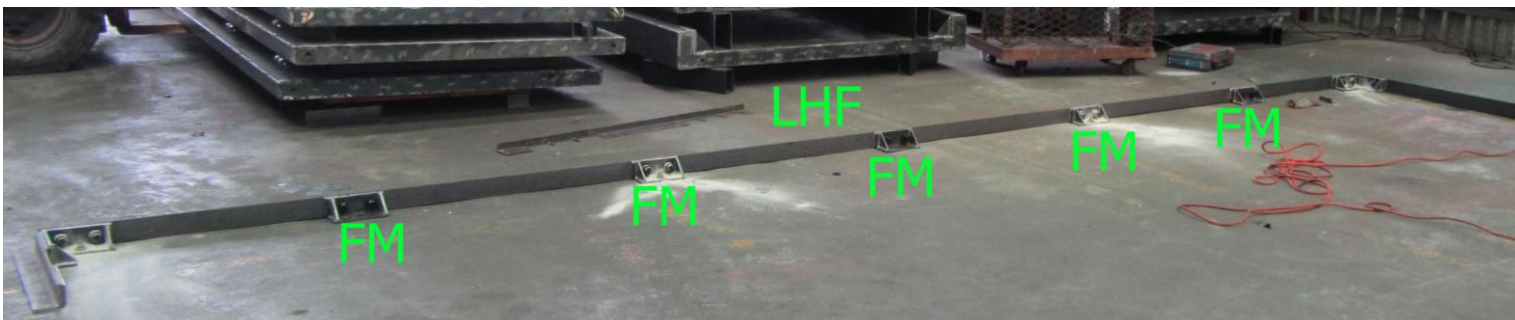
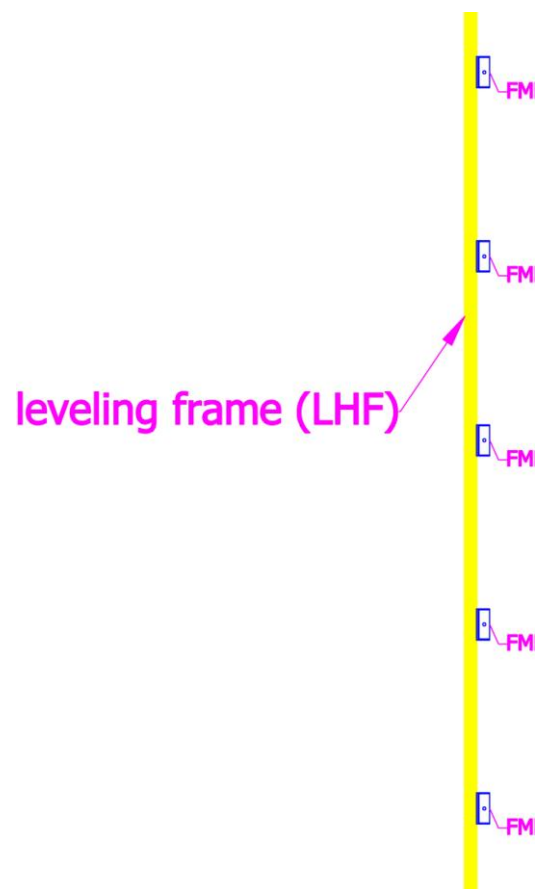
Description		Q'ty
Hex Screw	5/8"*1-1/2"	10
Hex Nut	5/8"	10
Lock Washer	5/8"	10
Flat Washer	5/8"*OD38*3T	20

leveling frame (BHF)



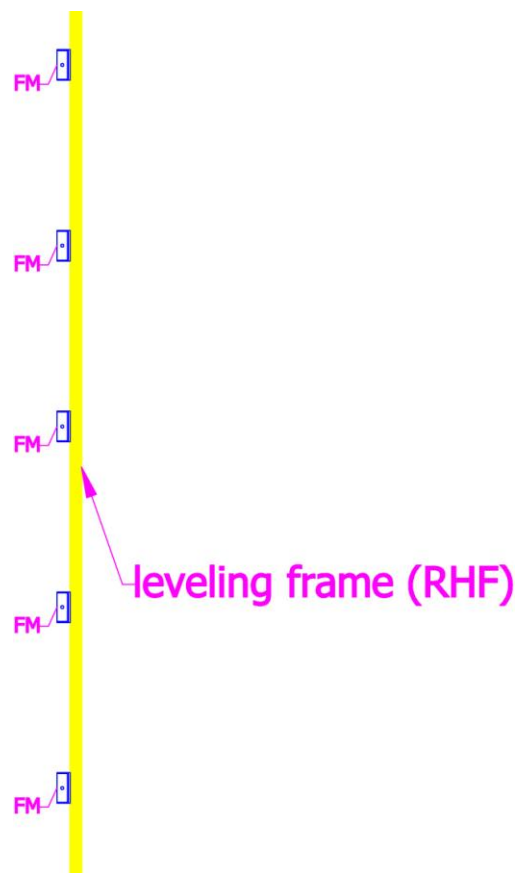
- Take out the number: **FM**.
- Fasten **FM** adjacent to **LHF** with:

Description		Q'ty
Hex Screw	5/8"*1-1/2"	10
Hex Nut	5/8"	10
Lock Washer	5/8"	10
Flat Washer	5/8"*OD38*3T	20



- Take out the number: **FM**.
- Assemble **FM** adjacent to **RHF** with:

Description		Q'ty
Hex Screw	5/8"*1-1/2"	10
Hex Nut	5/8"	10
Lock Washer	5/8"	10
Flat Washer	5/8"*OD38*3T	20

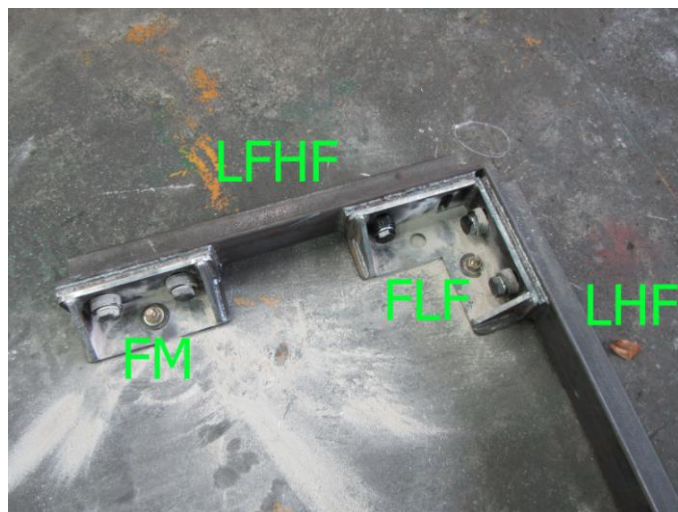
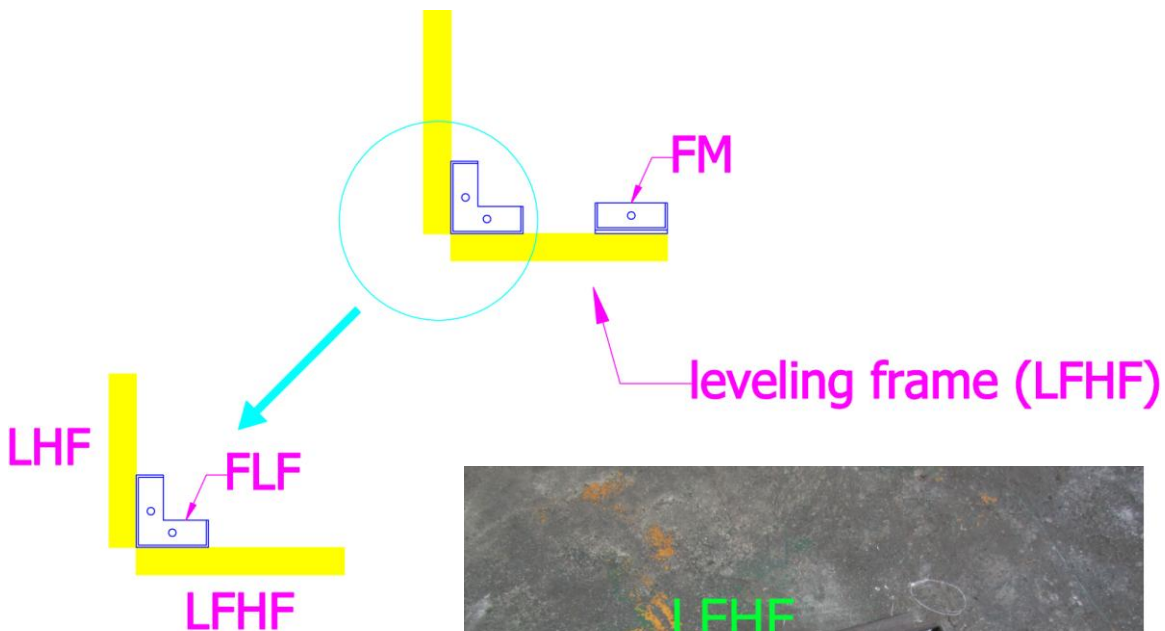


- Take out the number: **FLF** and **FM**.
- Set **FLF** at the adjoining corner of **LHF** and **LFHF** with:

Description		Q'ty
Hex Screw	5/8"*1-1/2"	4
Hex Nut	5/8"	4
Lock Washer	5/8"	4
Flat Washer	5/8"*OD38*3T	8

- Lock **FM** adjacent to **LFHF** with:

Description		Q'ty
Hex Screw	5/8"*1-1/2"	2
Hex Nut	5/8"	2
Lock Washer	5/8"	2
Flat Washer	5/8"*OD38*3T	4

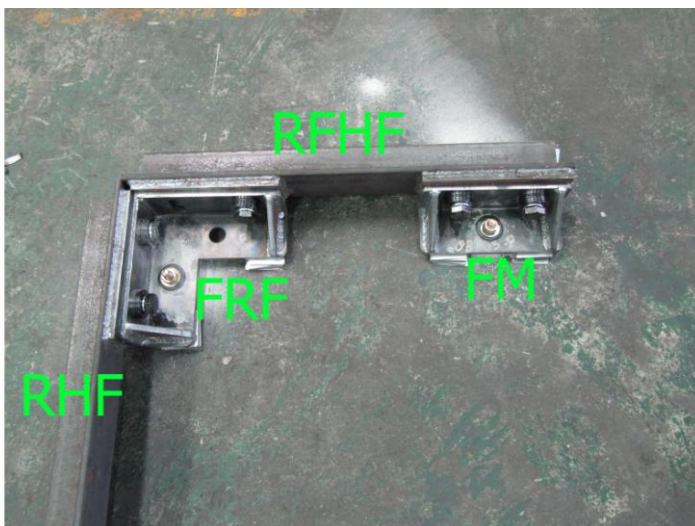
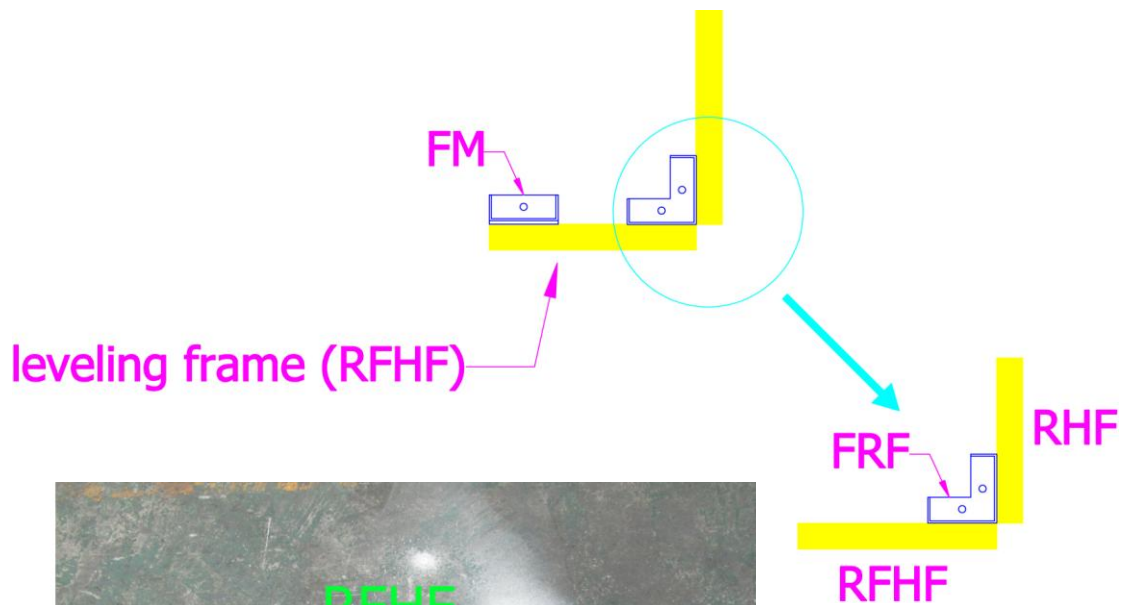


- Take out the number: **FRF** and **FM**.
- Set **FRF** at the adjoining corner of **RHF** and **RFHF** with:

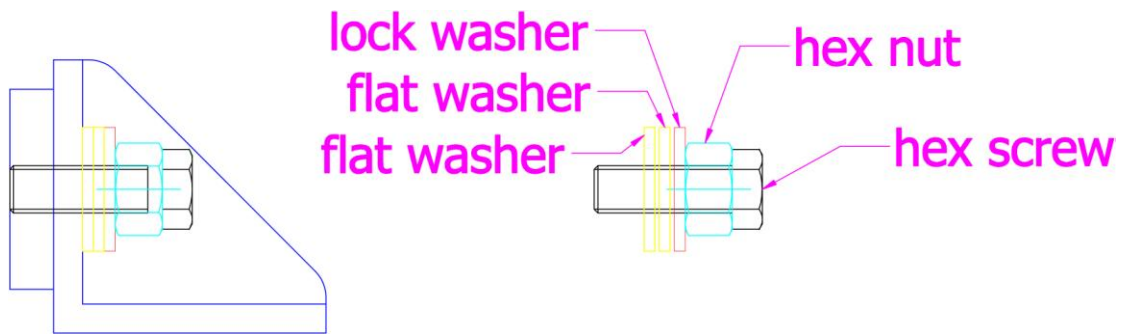
Description		Q'ty
Hex Screw	5/8"*1-1/2"	4
Hex Nut	5/8"	4
Lock Washer	5/8"	4
Flat Washer	5/8"*OD38*3T	8

- Lock **FM** adjacent to **RFHF** with:

Description		Q'ty
Hex Screw	5/8"*1-1/2"	2
Hex Nut	5/8"	2
Lock Washer	5/8"	2
Flat Washer	5/8"*OD38*3T	4



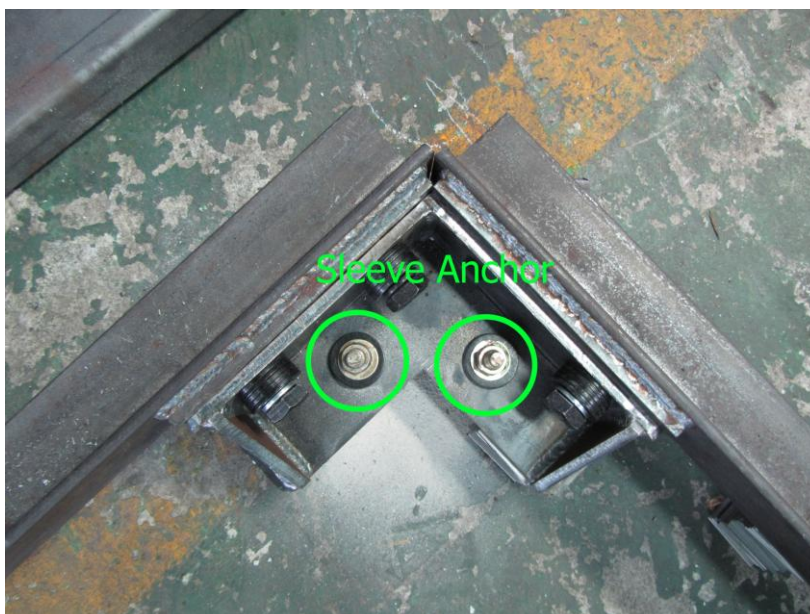
- Pay attention to hardware assembly method for leveling frame as shown below.



- Please fill in the steel pads for field ground leveling to the gaps in-between the leveling frame and the floor.



- Fasten sleeve anchors (5/8"*5"L) to field bolted after installations for leveling frame.



- Take out the number: **BS4**
- Secure **BS4** on **BHF**



- Take out the number: **RS1**
- Fasten **RS1** on **RHF** and lock **RS1** adjacent **BS4** with:

Description		Q'ty
Hex Screw	1/2"*8-1/2"	16
Flat Washer	1/2"*OD34*3T	32
Hex Nut	1/2"	16



- Take out the number: **BCSP**
- Fasten **BCSP**: one end to **BS4** and the other end to **RS1** with:

Description		Q'ty
Hex Screw	5/8"*4-1/2"	32
Flat Washer	5/8"*OD38*3T	64
Hex Nut	5/8"	32



- Take out the number: **SPP**
- Place **SPP** next to **RS1**



- Take out the number: **BS3**
- Secure **BS3** on **RHF** and join **BS3** and **BS4** together with:

Description		Q'ty
Hex Screw	1/2"*9-1/2"	16
Flat Washer	1/2"*OD34*3T	32
Hex Nut	1/2"	16



- Take out the number: **BS2**
- Secure **BS2** on **RHF** and join **BS2** and **BS3** together with:

Description		Q'ty
Hex Screw	1/2"*9-1/2"	16
Flat Washer	1/2"*OD34*3T	32
Hex Nut	1/2"	16



- Take out the number: **RS2**
- Secure **RS2** on **LHF** and sit **RS2** next to **SPP**, connected to **RS1** with:

Description		Q'ty
Hex Screw	1/2"*9-1/2"	16
Flat Washer	1/2"*OD34*3T	32
Hex Nut	1/2"	16



- Secure **RS2** to **SPP** and **RS1** with:

Description		Q'ty
Hex Screw	1/2"*5"	16
Flat Washer	1/2"*OD34*3T	32
Hex Nut	1/2"	16



- Take out the number: **SPP**.
- Put **SPP** next to **RS2**.



- Take out the number: **RS3**
- Secure **RS3** on **RHF** and sit **RS3** next to **SPP**, connected to **RS2** with:

Description		Q'ty
Hex Screw	1/2"*9-1/2"	16
Flat Washer	1/2"*OD34*3T	32
Hex Nut	1/2"	16



- Secure **RS3** to **SPP** and **RS2** with:

Description		Q'ty
Hex Screw	1/2"*5"	16
Flat Washer	1/2"*OD34*3T	32
Hex Nut	1/2"	16



- Take out the number: **SPP**
- Put **SPP** next to **RS3**



- Take out the number: **RS4**
- Secure **RS4** on **RHF** and sit **RS4** next to **SPP**, connected to **RS3** with:

Description		Q'ty
Hex Screw	1/2"*9-1/2"	16
Flat Washer	1/2"*OD34*3T	32
Hex Nut	1/2"	16



- Secure **RS4** to **SPP** and **RS3** with:

Description		Q'ty
Hex Screw	1/2"*5"	16
Flat Washer	1/2"*OD34*3T	32
Hex Nut	1/2"	16



- Take out the number: **FRS**
- Secure **FRS** on **RFHF** and connected to **RS4** with:

Description		Q'ty
Hex Screw	1/2"*8-1/2"	16
Flat Washer	1/2"*OD34*3T	32
Hex Nut	1/2"	16



- Take out the number: **FCSP**
- Fasten **FCSP**: one end to **RS4** and the other end to **FRS** with:

Description		Q'ty
Hex Screw	5/8"*4-1/2"	32
Flat Washer	5/8"*OD38*3T	64
Hex Nut	5/8"	32



- Take out the number: **BS1**
- Secure **BS1** on **BHF** and join **BS1** and **BS2** together with:

Description		Q'ty
Hex Screw	1/2"*9-1/2"	16
Flat Washer	1/2"*OD34*3T	32
Hex Nut	1/2"	16



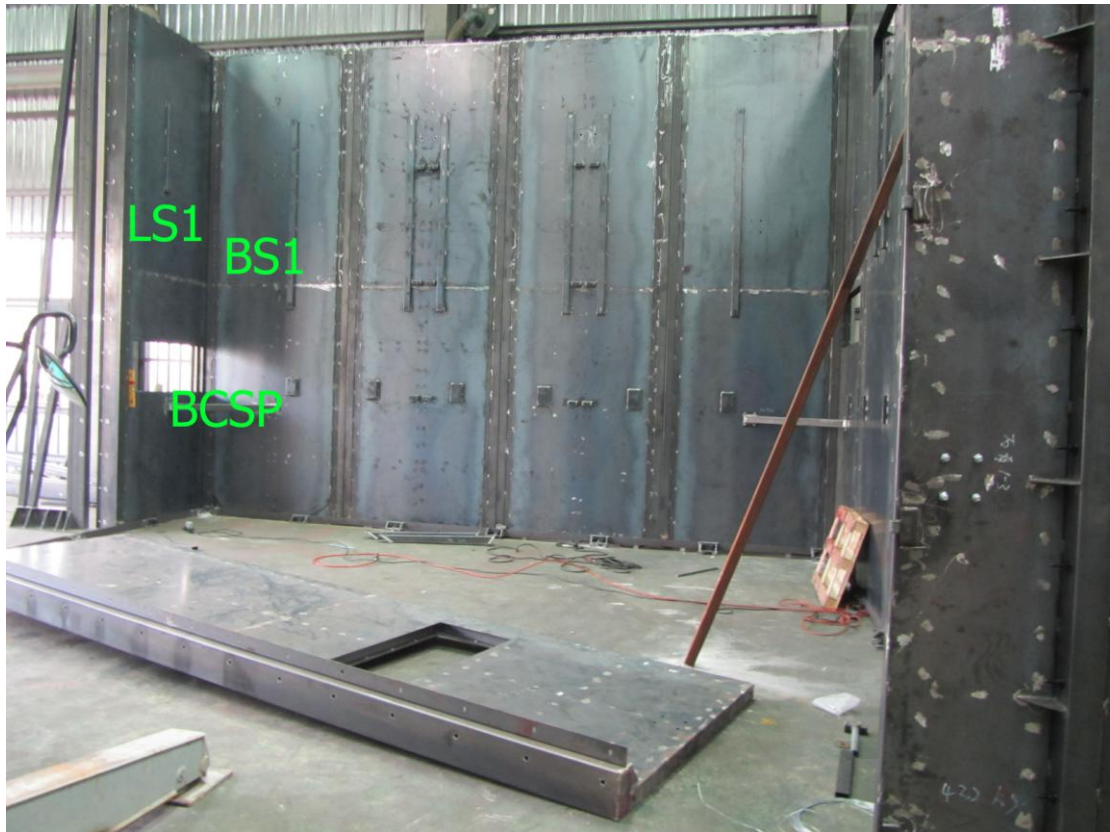
- Take out the number: **LS1**
- Secure **LS1** on **LHF** and join **LS1** and **BS1** together with:

Description		Q'ty
Hex Screw	1/2"*8-1/2"	16
Flat Washer	1/2"*OD34*3T	32
Hex Nut	1/2"	16



- Take out the number: **BCSP**
- Fasten **BCSP**: one end to **BS1** and the other end to **LS1** with:

Description		Q'ty
Hex Screw	5/8"*4-1/2"	32
Flat Washer	5/8"*OD38*3T	64
Hex Nut	5/8"	32



- Take out the number: **SPP**
- Put **SPP** next to **LS1**



- Take out the number: **LS2**
- Secure **LS2** on **LHF** and sit **LS2** next to **SPP** .Join **LS2** and **LS1** together with:

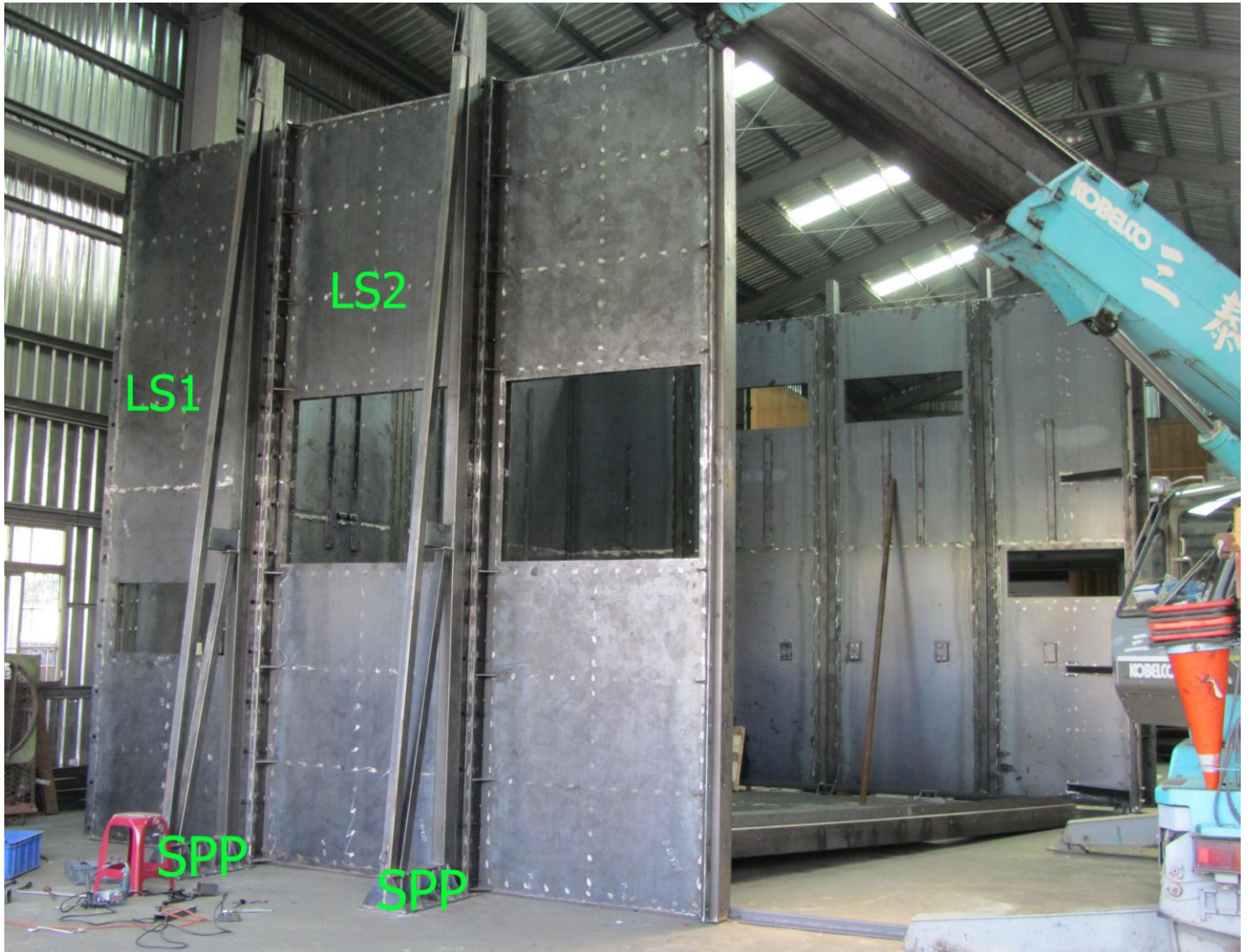
Description		Q'ty
Hex Screw	1/2"*9-1/2"	16
Flat Washer	1/2"*OD34*3T	32
Hex Nut	1/2"	16

- Secure **LS2** to **SPP** and **LS1** with:

Description		Q'ty
Hex Screw	1/2"*5"	16
Flat Washer	1/2"*OD34*3T	32
Hex Nut	1/2"	16



- Take out the number: **SPP**
- Put **SPP** next to **LS2**

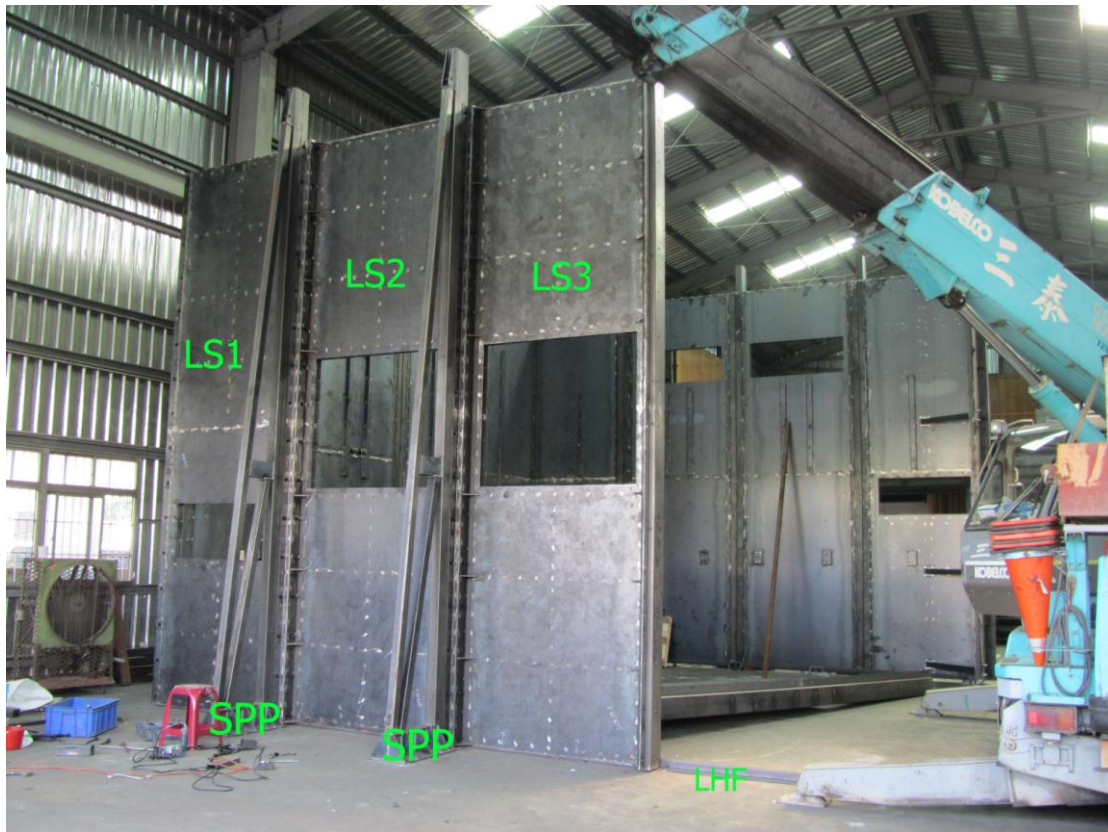


- Take out the number: **LS3**
- Secure **LS3** on **LHF** and sit **LS3** next to **SPP** .Join **LS3** and **LS2** together with:

Description		Q'ty
Hex Screw	1/2"*9-1/2"	16
Flat Washer	1/2"*OD34*3T	32
Hex Nut	1/2"	16

- Secure **LS3** to **SPP** and **LS2** with:

Description		Q'ty
Hex Screw	1/2"*5"	16
Flat Washer	1/2"*OD34*3T	32
Hex Nut	1/2"	16



- Take out the number: **SPP**
- Put **SPP** next to **LS3**



- Take out the number: **LS4**
- Secure **LS4** on **LHF** and sit **LS4** next to **SPP** .Join **LS4** and **LS3** together with:

Description		Q'ty
Hex Screw	1/2"*9-1/2"	16
Flat Washer	1/2"*OD34*3T	32
Hex Nut	1/2"	16

- Secure **LS4** to **SPP** and **LS3** with:

Description		Q'ty
Hex Screw	1/2"*5"	16
Flat Washer	1/2"*OD34*3T	32
Hex Nut	1/2"	16



- Take out the number: **FLS**
- Secure **FLS** on **LFHF** and join **FLS** and **LS4** together with:

Description		Q'ty
Hex Screw	1/2"*8-1/2"	16
Flat Washer	1/2"*OD34*3T	32
Hex Nut	1/2"	16



- Take out the number: **FCSP**
- Fasten **FCSP**: one end to **FLS** and the other end to **LS4** with:

Description		Q'ty
Hex Screw	5/8"*4-1/2"	32
Flat Washer	5/8"*OD38*3T	64
Hex Nut	5/8"	32



- Take out the number: **HRP**
- Secure **HRP** on **BS1~BS4** with:

Description		Q'ty
Hex Screw	1/2"*1"	12
Flat Washer	1/2"*OD34*3T	24
Hex Nut	1/2"	12



- Take out the number: **HRP**
- Secure **HRP** on **RS1~RS4** with:

Description		Q'ty
Hex Screw	1/2"*1"	4
Flat Washer	1/2"*OD34*3T	8
Hex Nut	1/2"	4



- Take out the number: **HRP**
- Secure **HRP** on **LS1~LS4** with
-

Description		Q'ty
Hex Screw	1/2"*1"	4
Flat Washer	1/2"*OD34*3T	8
Hex Nut	1/2"	4



- Take out the number: **BHR**
- Secure **BHR** on **BS1~BS4** with:

Description		Q'ty
Hex Screw	1/2"*1"	30
Flat Washer	1/2"*OD34*3T	60
Hex Nut	1/2"	30

- Secure **BHR** on **HRP** with:

Description		Q'ty
Cap Screw	M16*30	6



- Take out the number: **LHR**
- Secure **LHR** on **LS1~LS4** with:

Description		Q'ty
Hex Screw	1/2"*1"	30
Flat Washer	1/2"*OD34*3T	60
Hex Nut	1/2"	30

- Secure **LHR** on **HRP** with:

Description		Q'ty
Cap Screw	M16*30	6



- Take out the number: **RHR**
- Secure **RHR** on **RS1~RS4** with:

Description		Q'ty
Hex Screw	1/2"*1"	30
Flat Washer	1/2"*OD34*3T	60
Hex Nut	1/2"	30

- Secure **RHR** on **HRP** with:

Description		Q'ty
Cap Screw	M16*30	6



- Take out the number: **AB1**
- Secure **AB1** on **BHR** with:

Description		Q'ty
Hex Screw	3/8"*1"	22
Flat Washer	3/8"*OD19*2T	44
Hex Nut	3/8"	22



- Take out the number: **AB2**
- Secure **AB2** on **BHR** with:

Description		Q'ty
Hex Screw	3/8"*1"	22
Flat Washer	3/8"*OD19*2T	44
Hex Nut	3/8"	22



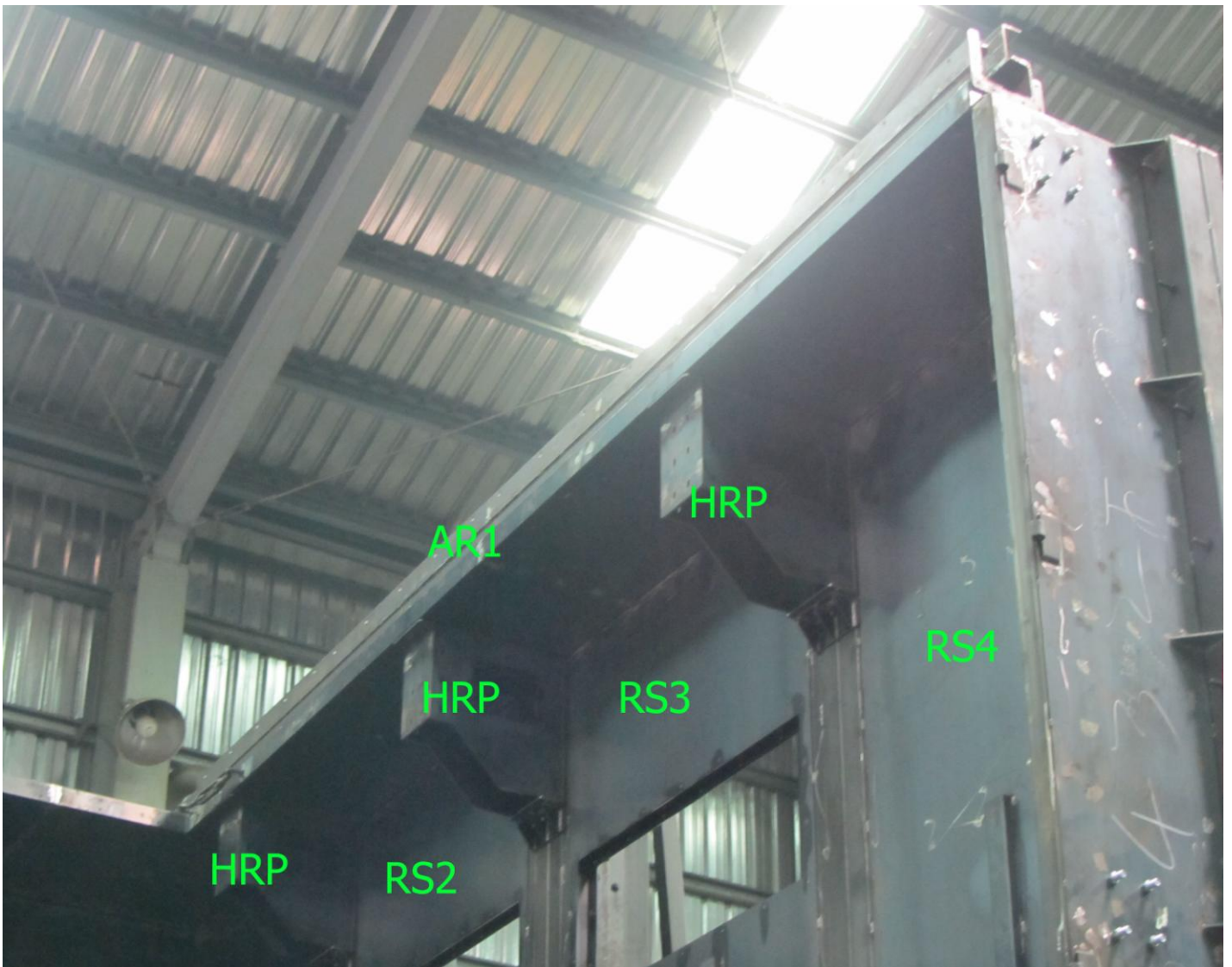
- Take out the number: **AL1**
- Secure **AL1** on **BHR** with:

Description		Q'ty
Hex Screw	3/8"*1"	14
Flat Washer	3/8"*OD19*2T	28
Hex Nut	3/8"	14



- Take out the number: **AR1**
- Secure **AR1** on **BHR** with:

Description		Q'ty
Hex Screw	3/8"*1"	14
Flat Washer	3/8"*OD19*2T	28
Hex Nut	3/8"	14



- Take out the number: **TL**
- Put **TL** on **AL1**



- Take out the number: **TL**
- Put **TL** on **AL1**



- Take out the number: **MPC1**
- Put **MPC1** into **TL** and **RL**



- Take out the number: **MPC2**
- Put **MPC2** into **TL** and **RL**



- Take out the number: **MPC3**
- Put **MPC3** into **TL** and **RL**

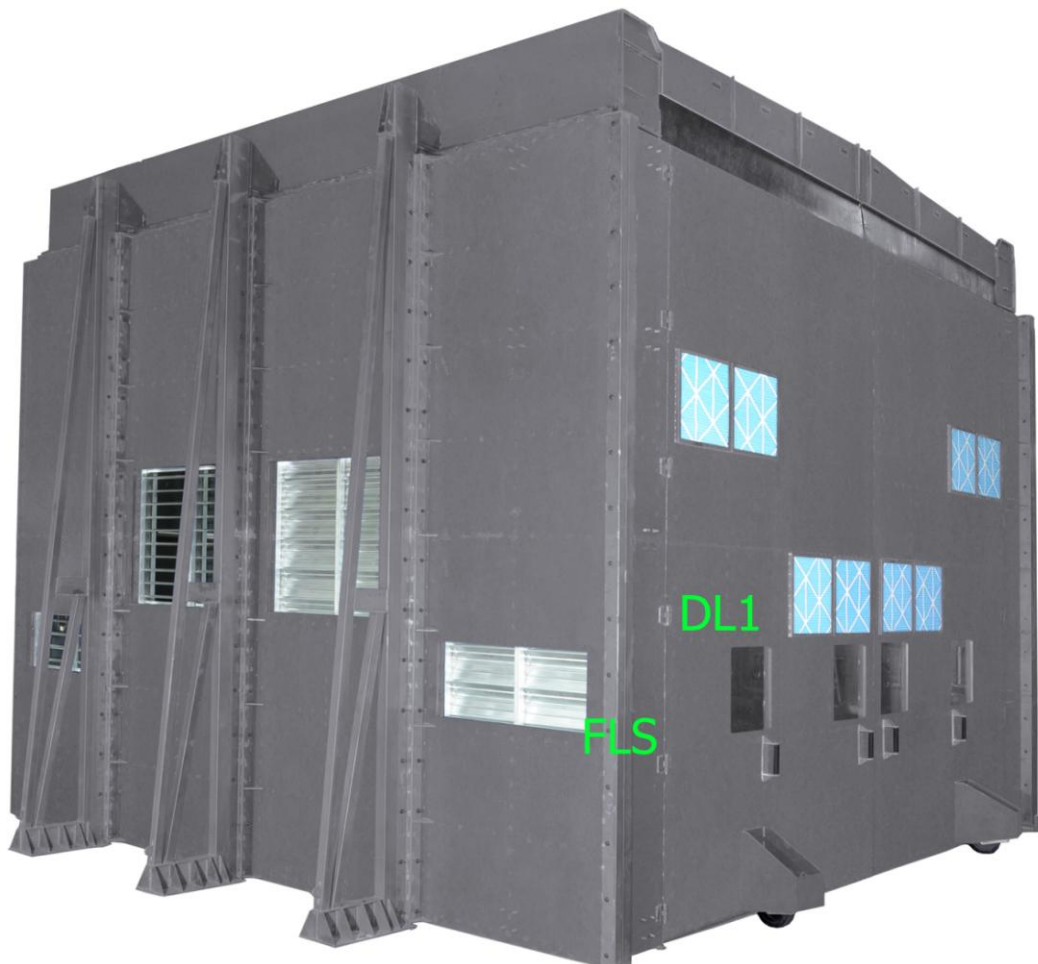


- Take out the number: **MPC4**
- Put **MPC4** into **TL** and **RL**



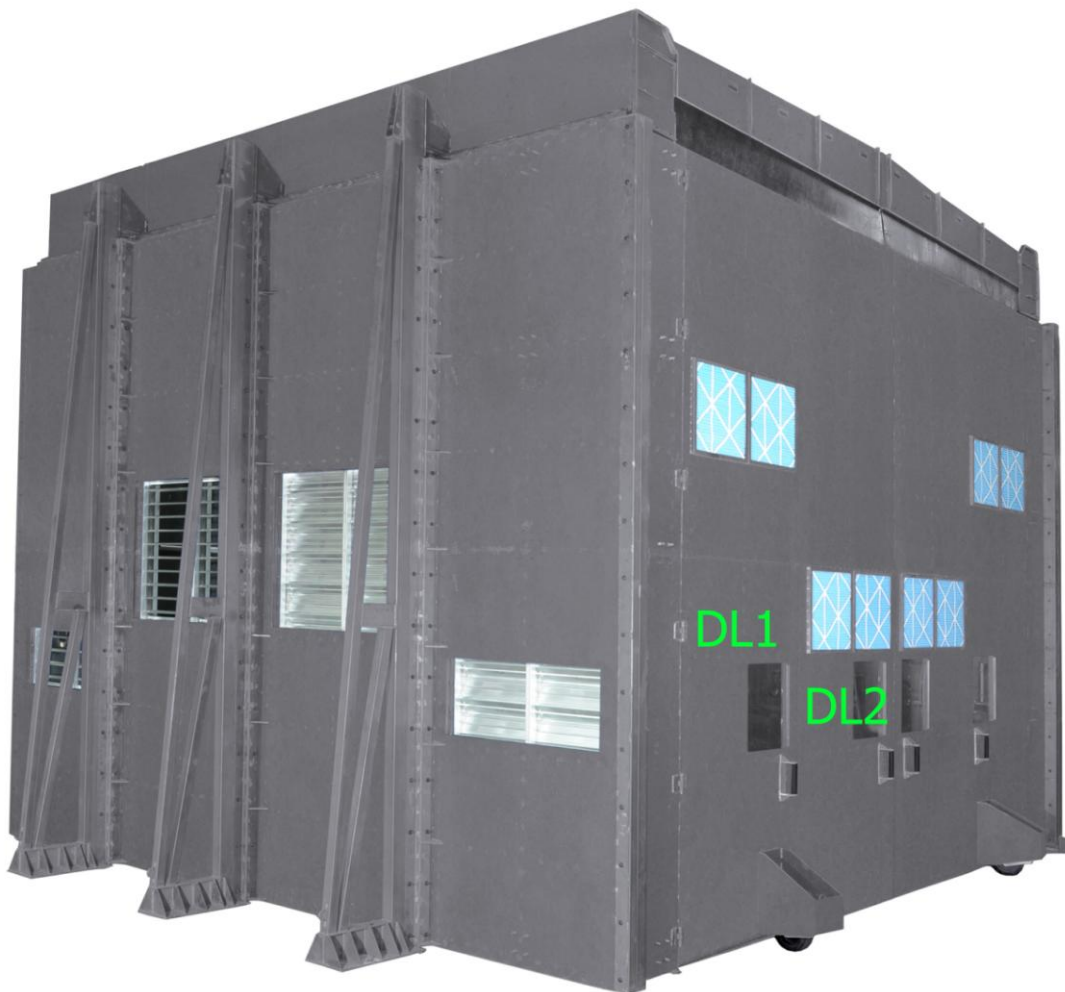
- Take out the number: **LD1**
- Secure **LD1** to **FLS** with

Description		Q'ty
Hex Screw	5/8"*5"	6
Nylon Lock Nut	5/8"	12



- Take out the number: **LD2**
- Secure **LD2** to **LD1** with

Description		Q'ty
Hex Screw	5/8"*5"	6
Nylon Lock Nut	5/8"	12



- Take out the number: **RD1**
- Secure **RD1** to **FRS** with

Description		Q'ty
Hex Screw	5/8"*5"	6
Nylon Lock Nut	5/8"	12



- Take out the number: **RD2**
- Secure **RD1** to **RD2** with

Description		Q'ty
Hex Screw	5/8"*5"	6
Nylon Lock Nut	5/8"	12

